



Full wwPDB X-ray Structure Validation Report ⓘ

Jun 19, 2024 – 11:00 AM EDT

PDB ID : 4DUK
Title : Carboxypeptidase T with L-BENZYLSUCCINIC ACID
Authors : Kuznetsov, S.A.; Timofeev, V.I.; Akparov, V.K.; Kuranova, I.P.
Deposited on : 2012-02-22
Resolution : 1.57 Å(reported)

This is a Full wwPDB X-ray Structure Validation Report for a publicly released PDB entry.

We welcome your comments at validation@mail.wwpdb.org

A user guide is available at

<https://www.wwpdb.org/validation/2017/XrayValidationReportHelp>

with specific help available everywhere you see the ⓘ symbol.

The types of validation reports are described at

<http://www.wwpdb.org/validation/2017/FAQs#types>.

The following versions of software and data (see [references ⓘ](#)) were used in the production of this report:

MolProbity	:	4.02b-467
Mogul	:	2022.3.0, CSD as543be (2022)
Xtriage (Phenix)	:	1.20.1
EDS	:	2.37.1
Percentile statistics	:	20191225.v01 (using entries in the PDB archive December 25th 2019)
Refmac	:	5.8.0158
CCP4	:	7.0.044 (Gargrove)
Ideal geometry (proteins)	:	Engh & Huber (2001)
Ideal geometry (DNA, RNA)	:	Parkinson et al. (1996)
Validation Pipeline (wwPDB-VP)	:	2.37.1

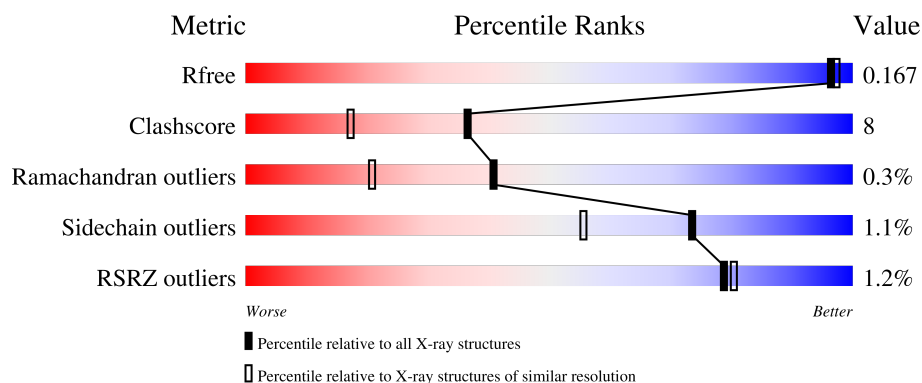
1 Overall quality at a glance

The following experimental techniques were used to determine the structure:

X-RAY DIFFRACTION

The reported resolution of this entry is 1.57 Å.

Percentile scores (ranging between 0-100) for global validation metrics of the entry are shown in the following graphic. The table shows the number of entries on which the scores are based.



Metric	Whole archive (#Entries)	Similar resolution (#Entries, resolution range(Å))
R_{free}	130704	5534 (1.60-1.56)
Clashscore	141614	5861 (1.60-1.56)
Ramachandran outliers	138981	5708 (1.60-1.56)
Sidechain outliers	138945	5703 (1.60-1.56)
RSRZ outliers	127900	5431 (1.60-1.56)

The table below summarises the geometric issues observed across the polymeric chains and their fit to the electron density. The red, orange, yellow and green segments of the lower bar indicate the fraction of residues that contain outliers for ≥ 3 , 2, 1 and 0 types of geometric quality criteria respectively. A grey segment represents the fraction of residues that are not modelled. The numeric value for each fraction is indicated below the corresponding segment, with a dot representing fractions $\leq 5\%$. The upper red bar (where present) indicates the fraction of residues that have poor fit to the electron density. The numeric value is given above the bar.

Mol	Chain	Length	Quality of chain
1	A	326	

The following table lists non-polymeric compounds, carbohydrate monomers and non-standard residues in protein, DNA, RNA chains that are outliers for geometric or electron-density-fit criteria:

Mol	Type	Chain	Res	Chirality	Geometry	Clashes	Electron density
6	GOL	A	411	-	-	X	-

2 Entry composition [i](#)

There are 7 unique types of molecules in this entry. The entry contains 3298 atoms, of which 0 are hydrogens and 0 are deuteriums.

In the tables below, the ZeroOcc column contains the number of atoms modelled with zero occupancy, the AltConf column contains the number of residues with at least one atom in alternate conformation and the Trace column contains the number of residues modelled with at most 2 atoms.

- Molecule 1 is a protein called Carboxypeptidase T.

Mol	Chain	Residues	Atoms					ZeroOcc	AltConf	Trace
1	A	323	Total	C	N	O	S	0	26	0
			2804	1753	468	571	12			

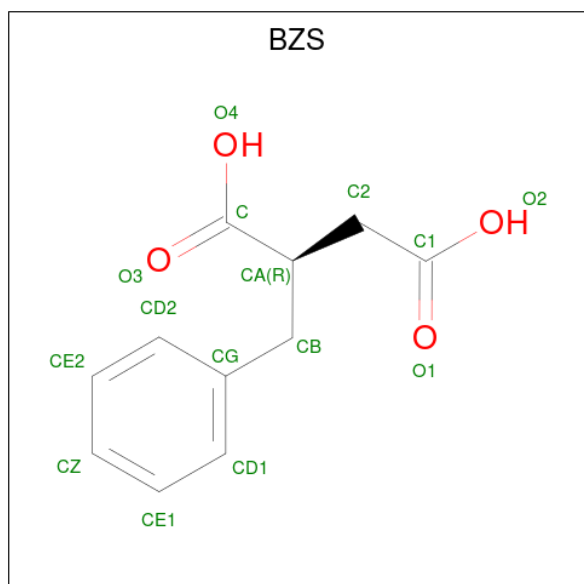
- Molecule 2 is ZINC ION (three-letter code: ZN) (formula: Zn).

Mol	Chain	Residues	Atoms		ZeroOcc	AltConf
2	A	1	Total	Zn	0	0
			1	1		

- Molecule 3 is CALCIUM ION (three-letter code: CA) (formula: Ca).

Mol	Chain	Residues	Atoms		ZeroOcc	AltConf
3	A	4	Total	Ca	0	0
			4	4		

- Molecule 4 is L-BENZYLsuccinic ACID (three-letter code: BZS) (formula: C₁₁H₁₂O₄).



Mol	Chain	Residues	Atoms			ZeroOcc	AltConf
4	A	1	Total	C	O	0	0
			15	11	4		

- Molecule 5 is SULFATE ION (three-letter code: SO4) (formula: O₄S).



Mol	Chain	Residues	Atoms			ZeroOcc	AltConf
5	A	1	Total	O	S	0	0
			5	4	1		
5	A	1	Total	O	S	0	0
			5	4	1		

- Molecule 6 is GLYCEROL (three-letter code: GOL) (formula: C₃H₈O₃).



Mol	Chain	Residues	Atoms	ZeroOcc	AltConf
6	A	1	Total C O 6 3 3	0	0
6	A	1	Total C O 6 3 3	0	0
6	A	1	Total C O 6 3 3	0	0
6	A	1	Total C O 6 3 3	0	0
6	A	1	Total C O 6 3 3	0	0
6	A	1	Total C O 6 3 3	0	0
6	A	1	Total C O 6 3 3	0	0
6	A	1	Total C O 6 3 3	0	0
6	A	1	Total C O 12 6 6	0	1
6	A	1	Total C O 6 3 3	0	0
6	A	1	Total C O 6 3 3	0	0
6	A	1	Total C O 6 3 3	0	0
6	A	1	Total C O 6 3 3	0	0
6	A	1	Total C O 6 3 3	0	0
6	A	1	Total C O 6 3 3	0	0
6	A	1	Total C O 6 3 3	0	0
6	A	1	Total C O 6 3 3	0	0
6	A	1	Total C O 6 3 3	0	0
6	A	1	Total C O 6 3 3	0	0
6	A	1	Total C O 6 3 3	0	0
6	A	1	Total C O 12 6 6	0	1
6	A	1	Total C O 6 3 3	0	0
6	A	1	Total C O 6 3 3	0	0

Continued on next page...

Continued from previous page...

Mol	Chain	Residues	Atoms			ZeroOcc	AltConf
6	A	1	Total	C	O	0	0
			6	3	3		
6	A	1	Total	C	O	0	0
			6	3	3		

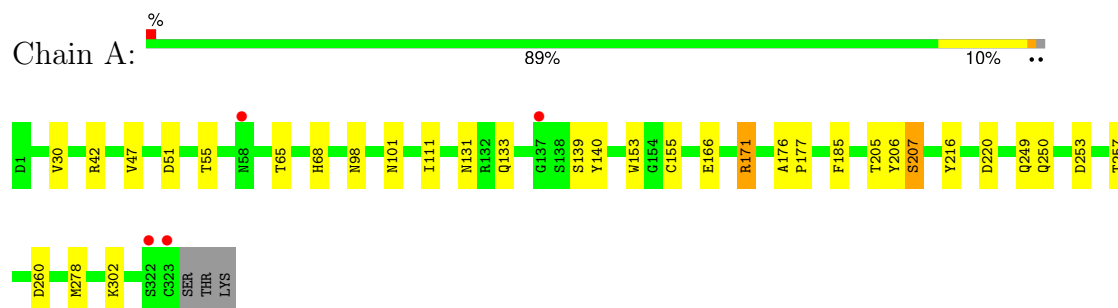
- Molecule 7 is water.

Mol	Chain	Residues	Atoms		ZeroOcc	AltConf
7	A	300	Total	O	0	8
			308	308		

3 Residue-property plots [i](#)

These plots are drawn for all protein, RNA, DNA and oligosaccharide chains in the entry. The first graphic for a chain summarises the proportions of the various outlier classes displayed in the second graphic. The second graphic shows the sequence view annotated by issues in geometry and electron density. Residues are color-coded according to the number of geometric quality criteria for which they contain at least one outlier: green = 0, yellow = 1, orange = 2 and red = 3 or more. A red dot above a residue indicates a poor fit to the electron density ($RSRZ > 2$). Stretches of 2 or more consecutive residues without any outlier are shown as a green connector. Residues present in the sample, but not in the model, are shown in grey.

- Molecule 1: Carboxypeptidase T



4 Data and refinement statistics

Property	Value	Source
Space group	P 63 2 2	Depositor
Cell constants a, b, c, α , β , γ	157.94Å 157.94Å 104.44Å 90.00° 90.00° 120.00°	Depositor
Resolution (Å)	10.00 – 1.57 9.99 – 1.57	Depositor EDS
% Data completeness (in resolution range)	98.2 (10.00-1.57) 98.2 (9.99-1.57)	Depositor EDS
R_{merge}	(Not available)	Depositor
R_{sym}	(Not available)	Depositor
$\langle I/\sigma(I) \rangle$ ¹	2.82 (at 1.57Å)	Xtriage
Refinement program	REFMAC 5.6.0117	Depositor
R, R_{free}	0.151 , 0.167 0.150 , 0.167	Depositor DCC
R_{free} test set	5179 reflections (5.00%)	wwPDB-VP
Wilson B-factor (Å ²)	9.8	Xtriage
Anisotropy	0.755	Xtriage
Bulk solvent k_{sol} (e/Å ³), B_{sol} (Å ²)	0.45 , 60.8	EDS
L-test for twinning ²	$\langle L \rangle = 0.46$, $\langle L^2 \rangle = 0.29$	Xtriage
Estimated twinning fraction	No twinning to report.	Xtriage
F_o, F_c correlation	0.97	EDS
Total number of atoms	3298	wwPDB-VP
Average B, all atoms (Å ²)	15.0	wwPDB-VP

Xtriage's analysis on translational NCS is as follows: *The largest off-origin peak in the Patterson function is 2.77% of the height of the origin peak. No significant pseudotranslation is detected.*

¹Intensities estimated from amplitudes.

²Theoretical values of $\langle |L| \rangle$, $\langle L^2 \rangle$ for acentric reflections are 0.5, 0.333 respectively for untwinned datasets, and 0.375, 0.2 for perfectly twinned datasets.

5 Model quality [i](#)

5.1 Standard geometry [i](#)

Bond lengths and bond angles in the following residue types are not validated in this section: CA, ZN, GOL, SO4, BZS

The Z score for a bond length (or angle) is the number of standard deviations the observed value is removed from the expected value. A bond length (or angle) with $|Z| > 5$ is considered an outlier worth inspection. RMSZ is the root-mean-square of all Z scores of the bond lengths (or angles).

Mol	Chain	Bond lengths		Bond angles	
		RMSZ	$\# Z > 5$	RMSZ	$\# Z > 5$
1	A	0.48	1/2876 (0.0%)	0.56	0/3906

Chiral center outliers are detected by calculating the chiral volume of a chiral center and verifying if the center is modelled as a planar moiety or with the opposite hand. A planarity outlier is detected by checking planarity of atoms in a peptide group, atoms in a mainchain group or atoms of a sidechain that are expected to be planar.

Mol	Chain	#Chirality outliers	#Planarity outliers
1	A	0	1

All (1) bond length outliers are listed below:

Mol	Chain	Res	Type	Atoms	Z	Observed(Å)	Ideal(Å)
1	A	153	TRP	CD2-CE2	5.13	1.47	1.41

There are no bond angle outliers.

There are no chirality outliers.

All (1) planarity outliers are listed below:

Mol	Chain	Res	Type	Group
1	A	155	CYS	Peptide

5.2 Too-close contacts [i](#)

In the following table, the Non-H and H(model) columns list the number of non-hydrogen atoms and hydrogen atoms in the chain respectively. The H(added) column lists the number of hydrogen atoms added and optimized by MolProbity. The Clashes column lists the number of clashes within the asymmetric unit, whereas Symm-Clashes lists symmetry-related clashes.

Mol	Chain	Non-H	H(model)	H(added)	Clashes	Symm-Clashes
1	A	2804	0	2591	36	0
2	A	1	0	0	0	0
3	A	4	0	0	0	0
4	A	15	0	10	0	0
5	A	10	0	0	1	0
6	A	156	0	208	24	0
7	A	308	0	0	12	0
All	All	3298	0	2809	46	0

The all-atom clashscore is defined as the number of clashes found per 1000 atoms (including hydrogen atoms). The all-atom clashscore for this structure is 8.

All (46) close contacts within the same asymmetric unit are listed below, sorted by their clash magnitude.

Atom-1	Atom-2	Interatomic distance (Å)	Clash overlap (Å)
1:A:65[B]:THR:OG1	1:A:111[B]:ILE:HD11	1.05	1.21
6:A:424:GOL:O1	7:A:783:HOH:O	1.62	1.18
1:A:166[B]:GLU:CD	6:A:412:GOL:O3	1.84	1.15
1:A:65[B]:THR:OG1	1:A:111[B]:ILE:CD1	1.99	1.10
1:A:42:ARG:HH21	6:A:408:GOL:H32	1.16	1.07
6:A:410:GOL:O3	7:A:799:HOH:O	1.71	1.01
6:A:411:GOL:H12	7:A:758:HOH:O	0.84	1.00
1:A:166[B]:GLU:OE2	6:A:412:GOL:O3	1.80	0.97
1:A:166[B]:GLU:OE1	6:A:411:GOL:H2	1.66	0.95
1:A:65[B]:THR:HG1	1:A:111[B]:ILE:HD11	1.35	0.91
1:A:42:ARG:HH21	6:A:408:GOL:C3	1.88	0.85
1:A:166[B]:GLU:OE1	6:A:411:GOL:C2	2.32	0.78
1:A:249:GLN:HE22	6:A:421:GOL:H12	1.50	0.76
1:A:42:ARG:NH2	6:A:408:GOL:H32	1.99	0.75
6:A:430:GOL:H32	7:A:800:HOH:O	1.87	0.75
6:A:431:GOL:O1	7:A:752:HOH:O	2.11	0.67
1:A:253:ASP:OD2	7:A:670:HOH:O	2.13	0.67
1:A:220:ASP:HA	1:A:250[A]:GLN:HE22	1.61	0.65
6:A:414:GOL:H11	7:A:579:HOH:O	1.97	0.64
1:A:98[B]:ASN:HD22	1:A:98[B]:ASN:C	2.01	0.63
1:A:166[B]:GLU:CD	6:A:411:GOL:H2	2.19	0.63
1:A:98[B]:ASN:C	1:A:98[B]:ASN:ND2	2.58	0.57
1:A:51[B]:ASP:HB2	1:A:101:ASN:HD22	1.69	0.57
5:A:428:SO4:O1	6:A:429:GOL:O1	2.19	0.56
1:A:250[C]:GLN:NE2	7:A:764:HOH:O	2.39	0.55
1:A:111[B]:ILE:HG22	1:A:111[B]:ILE:O	2.07	0.54
1:A:51[A]:ASP:HB3	1:A:101:ASN:HD22	1.73	0.53

Continued on next page...

Continued from previous page...

Atom-1	Atom-2	Interatomic distance (Å)	Clash overlap (Å)
1:A:177[B]:PRO:HG3	7:A:743:HOH:O	2.09	0.53
1:A:133:GLN:HE22	1:A:176:ALA:HA	1.75	0.52
1:A:140:TYR:HE1	6:A:423:GOL:H11	1.75	0.51
1:A:220:ASP:HA	1:A:250[B]:GLN:HE22	1.78	0.48
6:A:409:GOL:H31	7:A:556:HOH:O	2.13	0.48
1:A:68:HIS:CE1	1:A:111[B]:ILE:HD13	2.49	0.48
1:A:205:THR:HG22	1:A:278:MET:HB2	1.96	0.48
1:A:206:TYR:O	1:A:207[B]:SER:CB	2.61	0.47
1:A:98[B]:ASN:ND2	1:A:98[B]:ASN:O	2.48	0.46
1:A:216:TYR:HA	1:A:257[B]:THR:O	2.15	0.46
6:A:422:GOL:H31	7:A:638:HOH:O	2.15	0.46
1:A:302:LYS:HD2	6:A:431:GOL:H11	1.96	0.46
1:A:30:VAL:HG13	1:A:47[B]:VAL:HG13	1.98	0.45
6:A:415[A]:GOL:O3	6:A:415[A]:GOL:O1	2.30	0.44
1:A:166[B]:GLU:OE1	6:A:412:GOL:O3	2.29	0.44
1:A:139:SER:H	6:A:423:GOL:H2	1.84	0.43
1:A:131:ASN:HD21	1:A:133:GLN:HE21	1.67	0.43
1:A:171[B]:ARG:HG2	7:A:539:HOH:O	2.21	0.40
1:A:185:PHE:HD1	6:A:409:GOL:H12	1.85	0.40

There are no symmetry-related clashes.

5.3 Torsion angles [i](#)

5.3.1 Protein backbone [i](#)

In the following table, the Percentiles column shows the percent Ramachandran outliers of the chain as a percentile score with respect to all X-ray entries followed by that with respect to entries of similar resolution.

The Analysed column shows the number of residues for which the backbone conformation was analysed, and the total number of residues.

Mol	Chain	Analysed	Favoured	Allowed	Outliers	Percentiles
1	A	351/326 (108%)	343 (98%)	6 (2%)	2 (1%)	25 8

All (2) Ramachandran outliers are listed below:

Mol	Chain	Res	Type
1	A	207[A]	SER
1	A	207[B]	SER

5.3.2 Protein sidechains [i](#)

In the following table, the Percentiles column shows the percent sidechain outliers of the chain as a percentile score with respect to all X-ray entries followed by that with respect to entries of similar resolution.

The Analysed column shows the number of residues for which the sidechain conformation was analysed, and the total number of residues.

Mol	Chain	Analysed	Rotameric	Outliers	Percentiles
1	A	312/285 (110%)	307 (98%)	5 (2%)	62 39

All (5) residues with a non-rotameric sidechain are listed below:

Mol	Chain	Res	Type
1	A	55[A]	THR
1	A	55[B]	THR
1	A	171[A]	ARG
1	A	171[B]	ARG
1	A	260	ASP

Sometimes sidechains can be flipped to improve hydrogen bonding and reduce clashes. All (6) such sidechains are listed below:

Mol	Chain	Res	Type
1	A	101	ASN
1	A	133	GLN
1	A	187	ASN
1	A	238	ASN
1	A	249	GLN
1	A	284	ASN

5.3.3 RNA [i](#)

There are no RNA molecules in this entry.

5.4 Non-standard residues in protein, DNA, RNA chains [i](#)

There are no non-standard protein/DNA/RNA residues in this entry.

5.5 Carbohydrates [i](#)

There are no monosaccharides in this entry.

5.6 Ligand geometry

Of 34 ligands modelled in this entry, 5 are monoatomic - leaving 29 for Mogul analysis.

In the following table, the Counts columns list the number of bonds (or angles) for which Mogul statistics could be retrieved, the number of bonds (or angles) that are observed in the model and the number of bonds (or angles) that are defined in the Chemical Component Dictionary. The Link column lists molecule types, if any, to which the group is linked. The Z score for a bond length (or angle) is the number of standard deviations the observed value is removed from the expected value. A bond length (or angle) with $|Z| > 2$ is considered an outlier worth inspection. RMSZ is the root-mean-square of all Z scores of the bond lengths (or angles).

Mol	Type	Chain	Res	Link	Bond lengths			Bond angles		
					Counts	RMSZ	$\# Z > 2$	Counts	RMSZ	$\# Z > 2$
6	GOL	A	418	-	5,5,5	0.28	0	5,5,5	0.40	0
6	GOL	A	407	-	5,5,5	0.27	0	5,5,5	0.33	0
6	GOL	A	409	-	5,5,5	0.16	0	5,5,5	0.54	0
6	GOL	A	413	-	5,5,5	0.27	0	5,5,5	0.27	0
4	BZS	A	405	2	15,15,15	0.83	0	19,19,19	1.32	2 (10%)
6	GOL	A	424	-	5,5,5	0.26	0	5,5,5	0.30	0
6	GOL	A	419	-	5,5,5	0.33	0	5,5,5	0.46	0
6	GOL	A	408	-	5,5,5	0.20	0	5,5,5	0.41	0
5	SO4	A	406	-	4,4,4	0.46	0	6,6,6	0.16	0
5	SO4	A	428	-	4,4,4	0.36	0	6,6,6	0.15	0
6	GOL	A	430	-	5,5,5	0.27	0	5,5,5	0.50	0
6	GOL	A	421	-	5,5,5	0.21	0	5,5,5	0.32	0
6	GOL	A	426[B]	-	5,5,5	0.27	0	5,5,5	0.34	0
6	GOL	A	412	-	5,5,5	0.26	0	5,5,5	0.27	0
6	GOL	A	415[B]	-	5,5,5	0.33	0	5,5,5	0.43	0
6	GOL	A	423	-	5,5,5	0.27	0	5,5,5	0.41	0
6	GOL	A	422	-	5,5,5	0.25	0	5,5,5	0.35	0
6	GOL	A	415[A]	-	5,5,5	0.27	0	5,5,5	0.32	0
6	GOL	A	426[A]	-	5,5,5	0.27	0	5,5,5	0.32	0
6	GOL	A	416	-	5,5,5	0.26	0	5,5,5	0.19	0
6	GOL	A	417	-	5,5,5	0.31	0	5,5,5	0.31	0
6	GOL	A	429	-	5,5,5	0.23	0	5,5,5	0.34	0
6	GOL	A	425	-	5,5,5	0.30	0	5,5,5	0.33	0
6	GOL	A	420	-	5,5,5	0.28	0	5,5,5	0.31	0
6	GOL	A	414	-	5,5,5	0.36	0	5,5,5	0.32	0
6	GOL	A	410	-	5,5,5	0.28	0	5,5,5	0.23	0
6	GOL	A	411	-	5,5,5	0.32	0	5,5,5	0.29	0
6	GOL	A	431	-	5,5,5	0.20	0	5,5,5	0.38	0
6	GOL	A	432	-	5,5,5	0.24	0	5,5,5	0.48	0

In the following table, the Chirals column lists the number of chiral outliers, the number of chiral centers analysed, the number of these observed in the model and the number defined in the

Chemical Component Dictionary. Similar counts are reported in the Torsion and Rings columns.
'-' means no outliers of that kind were identified.

Mol	Type	Chain	Res	Link	Chirals	Torsions	Rings
6	GOL	A	418	-	-	2/4/4/4	-
6	GOL	A	407	-	-	0/4/4/4	-
6	GOL	A	409	-	-	0/4/4/4	-
6	GOL	A	413	-	-	1/4/4/4	-
4	BZS	A	405	2	-	4/12/12/12	0/1/1/1
6	GOL	A	424	-	-	2/4/4/4	-
6	GOL	A	419	-	-	2/4/4/4	-
6	GOL	A	408	-	-	2/4/4/4	-
6	GOL	A	430	-	-	2/4/4/4	-
6	GOL	A	421	-	-	3/4/4/4	-
6	GOL	A	426[B]	-	-	0/4/4/4	-
6	GOL	A	412	-	-	2/4/4/4	-
6	GOL	A	415[B]	-	-	4/4/4/4	-
6	GOL	A	423	-	-	2/4/4/4	-
6	GOL	A	422	-	-	2/4/4/4	-
6	GOL	A	415[A]	-	-	3/4/4/4	-
6	GOL	A	426[A]	-	-	0/4/4/4	-
6	GOL	A	416	-	-	2/4/4/4	-
6	GOL	A	417	-	-	4/4/4/4	-
6	GOL	A	429	-	-	3/4/4/4	-
6	GOL	A	425	-	-	4/4/4/4	-
6	GOL	A	420	-	-	4/4/4/4	-
6	GOL	A	414	-	-	2/4/4/4	-
6	GOL	A	410	-	-	1/4/4/4	-
6	GOL	A	411	-	-	1/4/4/4	-
6	GOL	A	431	-	-	2/4/4/4	-
6	GOL	A	432	-	-	2/4/4/4	-

There are no bond length outliers.

All (2) bond angle outliers are listed below:

Mol	Chain	Res	Type	Atoms	Z	Observed(°)	Ideal(°)
4	A	405	BZS	CA-C2-C1	-3.11	106.90	113.92
4	A	405	BZS	O2-C1-C2	2.02	120.28	114.00

There are no chirality outliers.

All (56) torsion outliers are listed below:

Mol	Chain	Res	Type	Atoms
6	A	408	GOL	C1-C2-C3-O3
6	A	408	GOL	O2-C2-C3-O3
6	A	412	GOL	O1-C1-C2-O2
6	A	412	GOL	O1-C1-C2-C3
6	A	415[A]	GOL	C1-C2-C3-O3
6	A	415[A]	GOL	O2-C2-C3-O3
6	A	415[B]	GOL	O1-C1-C2-O2
6	A	415[B]	GOL	O1-C1-C2-C3
6	A	415[B]	GOL	C1-C2-C3-O3
6	A	416	GOL	C1-C2-C3-O3
6	A	416	GOL	O2-C2-C3-O3
6	A	417	GOL	O1-C1-C2-C3
6	A	417	GOL	C1-C2-C3-O3
6	A	418	GOL	C1-C2-C3-O3
6	A	418	GOL	O2-C2-C3-O3
6	A	419	GOL	C1-C2-C3-O3
6	A	420	GOL	C1-C2-C3-O3
6	A	420	GOL	O2-C2-C3-O3
6	A	422	GOL	C1-C2-C3-O3
6	A	423	GOL	O1-C1-C2-C3
6	A	424	GOL	O1-C1-C2-O2
6	A	424	GOL	O1-C1-C2-C3
6	A	425	GOL	C1-C2-C3-O3
6	A	429	GOL	O1-C1-C2-C3
6	A	431	GOL	O1-C1-C2-O2
6	A	431	GOL	O1-C1-C2-C3
6	A	419	GOL	O2-C2-C3-O3
6	A	411	GOL	C1-C2-C3-O3
6	A	415[A]	GOL	O1-C1-C2-C3
6	A	420	GOL	O1-C1-C2-C3
6	A	421	GOL	O1-C1-C2-C3
6	A	421	GOL	C1-C2-C3-O3
6	A	425	GOL	O1-C1-C2-C3
6	A	430	GOL	C1-C2-C3-O3
6	A	432	GOL	O1-C1-C2-C3
6	A	415[B]	GOL	O2-C2-C3-O3
6	A	422	GOL	O2-C2-C3-O3
6	A	423	GOL	O1-C1-C2-O2
6	A	425	GOL	O2-C2-C3-O3
6	A	429	GOL	O1-C1-C2-O2
6	A	417	GOL	O1-C1-C2-O2
6	A	417	GOL	O2-C2-C3-O3

Continued on next page...

Continued from previous page...

Mol	Chain	Res	Type	Atoms
6	A	420	GOL	O1-C1-C2-O2
6	A	421	GOL	O1-C1-C2-O2
6	A	430	GOL	O2-C2-C3-O3
6	A	429	GOL	O2-C2-C3-O3
6	A	432	GOL	O1-C1-C2-O2
4	A	405	BZS	CA-CB-CG-CD1
4	A	405	BZS	O1-C1-C2-CA
6	A	414	GOL	O2-C2-C3-O3
6	A	410	GOL	O1-C1-C2-C3
6	A	413	GOL	C1-C2-C3-O3
4	A	405	BZS	CA-CB-CG-CD2
6	A	425	GOL	O1-C1-C2-O2
4	A	405	BZS	O2-C1-C2-CA
6	A	414	GOL	C1-C2-C3-O3

There are no ring outliers.

15 monomers are involved in 24 short contacts:

Mol	Chain	Res	Type	Clashes	Symm-Clashes
6	A	409	GOL	2	0
6	A	424	GOL	1	0
6	A	408	GOL	3	0
5	A	428	SO4	1	0
6	A	430	GOL	1	0
6	A	421	GOL	1	0
6	A	412	GOL	3	0
6	A	423	GOL	2	0
6	A	422	GOL	1	0
6	A	415[A]	GOL	1	0
6	A	429	GOL	1	0
6	A	414	GOL	1	0
6	A	410	GOL	1	0
6	A	411	GOL	4	0
6	A	431	GOL	2	0

5.7 Other polymers

There are no such residues in this entry.

5.8 Polymer linkage issues ⓘ

There are no chain breaks in this entry.

6 Fit of model and data [i](#)

6.1 Protein, DNA and RNA chains [i](#)

In the following table, the column labelled '#RSRZ > 2' contains the number (and percentage) of RSRZ outliers, followed by percent RSRZ outliers for the chain as percentile scores relative to all X-ray entries and entries of similar resolution. The OWAB column contains the minimum, median, 95th percentile and maximum values of the occupancy-weighted average B-factor per residue. The column labelled 'Q < 0.9' lists the number of (and percentage) of residues with an average occupancy less than 0.9.

Mol	Chain	Analysed	<RSRZ>	#RSRZ>2	OWAB(Å ²)	Q<0.9
1	A	323/326 (99%)	-0.68	4 (1%) 79 80	7, 12, 26, 58	0

All (4) RSRZ outliers are listed below:

Mol	Chain	Res	Type	RSRZ
1	A	323	CYS	8.6
1	A	58	ASN	4.2
1	A	322	SER	3.3
1	A	137	GLY	2.2

6.2 Non-standard residues in protein, DNA, RNA chains [i](#)

There are no non-standard protein/DNA/RNA residues in this entry.

6.3 Carbohydrates [i](#)

There are no monosaccharides in this entry.

6.4 Ligands [i](#)

In the following table, the Atoms column lists the number of modelled atoms in the group and the number defined in the chemical component dictionary. The B-factors column lists the minimum, median, 95th percentile and maximum values of B factors of atoms in the group. The column labelled 'Q < 0.9' lists the number of atoms with occupancy less than 0.9.

Mol	Type	Chain	Res	Atoms	RSCC	RSR	B-factors(Å ²)	Q<0.9
6	GOL	A	429	6/6	0.68	0.22	23,26,30,34	6
6	GOL	A	430	6/6	0.73	0.29	33,39,41,45	6
6	GOL	A	432	6/6	0.73	0.24	21,27,32,36	6

Continued on next page...

Continued from previous page...

Mol	Type	Chain	Res	Atoms	RSCC	RSR	B-factors(\AA^2)	Q<0.9
6	GOL	A	414	6/6	0.75	0.13	21,26,26,31	6
6	GOL	A	431	6/6	0.76	0.24	28,31,37,39	6
6	GOL	A	412	6/6	0.77	0.17	24,29,36,39	6
6	GOL	A	419	6/6	0.77	0.20	24,28,34,35	6
6	GOL	A	421	6/6	0.78	0.20	22,24,26,32	6
6	GOL	A	425	6/6	0.78	0.24	26,31,32,34	6
6	GOL	A	416	6/6	0.80	0.23	26,30,31,32	6
6	GOL	A	424	6/6	0.81	0.18	30,32,36,37	6
6	GOL	A	415[B]	6/6	0.81	0.20	26,27,28,28	6
6	GOL	A	415[A]	6/6	0.81	0.20	19,19,19,19	6
6	GOL	A	418	6/6	0.82	0.19	23,28,34,41	6
6	GOL	A	409	6/6	0.82	0.18	25,30,35,38	6
6	GOL	A	408	6/6	0.82	0.18	21,24,27,31	6
5	SO4	A	406	5/5	0.85	0.14	23,27,30,33	5
6	GOL	A	410	6/6	0.85	0.11	39,44,44,45	6
6	GOL	A	426[A]	6/6	0.85	0.31	28,31,34,37	6
6	GOL	A	426[B]	6/6	0.85	0.31	35,37,39,42	6
6	GOL	A	407	6/6	0.87	0.22	30,34,39,43	2
6	GOL	A	423	6/6	0.87	0.16	26,30,33,35	6
6	GOL	A	422	6/6	0.89	0.18	27,30,32,34	6
6	GOL	A	411	6/6	0.90	0.14	25,26,27,27	6
6	GOL	A	420	6/6	0.91	0.23	22,30,31,37	6
6	GOL	A	417	6/6	0.91	0.10	47,49,54,58	0
6	GOL	A	413	6/6	0.93	0.15	32,35,40,41	6
4	BZS	A	405	15/15	0.97	0.06	10,13,16,17	0
3	CA	A	404	1/1	0.97	0.34	40,40,40,40	0
5	SO4	A	428	5/5	0.98	0.08	29,29,37,41	5
3	CA	A	427	1/1	0.99	0.23	42,42,42,42	0
3	CA	A	402	1/1	0.99	0.17	30,30,30,30	0
3	CA	A	403	1/1	1.00	0.16	35,35,35,35	0
2	ZN	A	401	1/1	1.00	0.01	9,9,9,9	0

6.5 Other polymers [i](#)

There are no such residues in this entry.