



Full wwPDB X-ray Structure Validation Report ⓘ

Jun 24, 2024 – 11:37 AM EDT

PDB ID : 6GEI
Title : TEAD4 (216-434);E263A+Y429F COMPLEXED WITH YAP PEPTIDE (60-100);S94A AND MYRISTOATE (COVALENTLY BOUND TO LYS344, NOT CYS367!) AT 1.65Å (P41212 CRYSTAL FORM); MYRISTOYLATION WAS DONE BY ADDING MYR-COA
Authors : Kallen, J.
Deposited on : 2018-04-26
Resolution : 1.65 Å(reported)

This is a Full wwPDB X-ray Structure Validation Report for a publicly released PDB entry.

We welcome your comments at validation@mail.wwpdb.org

A user guide is available at

<https://www.wwpdb.org/validation/2017/XrayValidationReportHelp>

with specific help available everywhere you see the ⓘ symbol.

The types of validation reports are described at

<http://www.wwpdb.org/validation/2017/FAQs#types>.

The following versions of software and data (see [references ⓘ](#)) were used in the production of this report:

MolProbity	:	4.02b-467
Mogul	:	1.8.5 (274361), CSD as541be (2020)
Xtriage (Phenix)	:	1.13
EDS	:	2.37.1
Percentile statistics	:	20191225.v01 (using entries in the PDB archive December 25th 2019)
Refmac	:	5.8.0158
CCP4	:	7.0.044 (Gargrove)
Ideal geometry (proteins)	:	Engh & Huber (2001)
Ideal geometry (DNA, RNA)	:	Parkinson et al. (1996)
Validation Pipeline (wwPDB-VP)	:	2.37.1

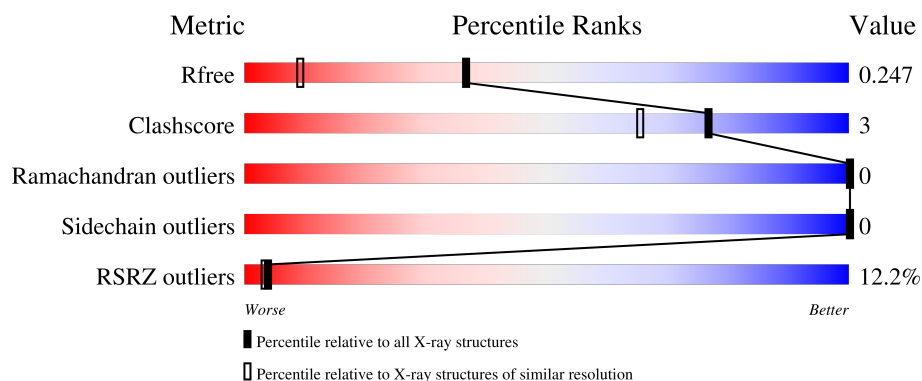
1 Overall quality at a glance

The following experimental techniques were used to determine the structure:

X-RAY DIFFRACTION

The reported resolution of this entry is 1.65 Å.

Percentile scores (ranging between 0-100) for global validation metrics of the entry are shown in the following graphic. The table shows the number of entries on which the scores are based.



Metric	Whole archive (#Entries)	Similar resolution (#Entries, resolution range(Å))
R_{free}	130704	1827 (1.66-1.66)
Clashscore	141614	1931 (1.66-1.66)
Ramachandran outliers	138981	1891 (1.66-1.66)
Sidechain outliers	138945	1891 (1.66-1.66)
RSRZ outliers	127900	1791 (1.66-1.66)

The table below summarises the geometric issues observed across the polymeric chains and their fit to the electron density. The red, orange, yellow and green segments of the lower bar indicate the fraction of residues that contain outliers for ≥ 3 , 2, 1 and 0 types of geometric quality criteria respectively. A grey segment represents the fraction of residues that are not modelled. The numeric value for each fraction is indicated below the corresponding segment, with a dot representing fractions $\leq 5\%$. The upper red bar (where present) indicates the fraction of residues that have poor fit to the electron density. The numeric value is given above the bar.

Mol	Chain	Length	Quality of chain
1	A	219	<div> <div>13%</div> <div>90%</div> <div>8%</div> </div>
2	L	42	<div> <div>5%</div> <div>93%</div> <div>5%</div> </div>

2 Entry composition

There are 5 unique types of molecules in this entry. The entry contains 2413 atoms, of which 0 are hydrogens and 0 are deuteriums.

In the tables below, the ZeroOcc column contains the number of atoms modelled with zero occupancy, the AltConf column contains the number of residues with at least one atom in alternate conformation and the Trace column contains the number of residues modelled with at most 2 atoms.

- Molecule 1 is a protein called Transcriptional enhancer factor TEF-3.

Mol	Chain	Residues	Atoms					ZeroOcc	AltConf	Trace
1	A	215	Total	C	N	O	S	0	17	0
			1831	1185	296	341	9			

There are 2 discrepancies between the modelled and reference sequences:

Chain	Residue	Modelled	Actual	Comment	Reference
A	263	ALA	GLU	engineered mutation	UNP Q15561
A	429	PHE	TYR	engineered mutation	UNP Q15561

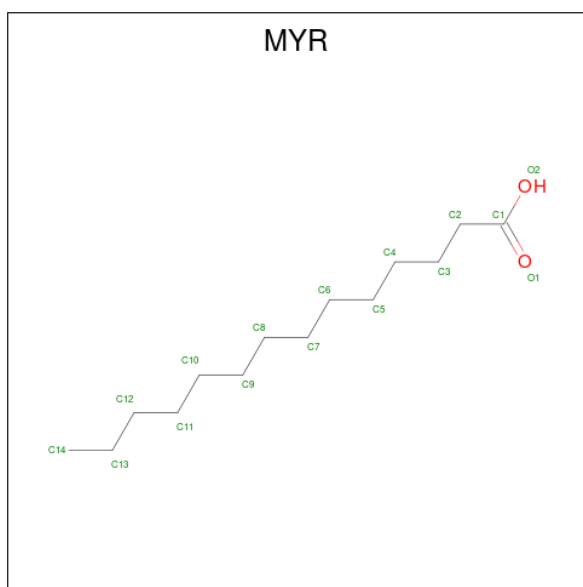
- Molecule 2 is a protein called Transcriptional coactivator YAP1.

Mol	Chain	Residues	Atoms					ZeroOcc	AltConf	Trace
2	L	41	Total	C	N	O	S	0	3	0
			337	217	56	61	3			

There are 2 discrepancies between the modelled and reference sequences:

Chain	Residue	Modelled	Actual	Comment	Reference
L	59	ACE	-	expression tag	UNP P46937
L	94	ALA	SER	engineered mutation	UNP P46937

- Molecule 3 is MYRISTIC ACID (three-letter code: MYR) (formula: C₁₄H₂₈O₂).



Mol	Chain	Residues	Atoms			ZeroOcc	AltConf
3	A	1	Total	C	O	0	0
			15	14	1		

- Molecule 4 is PHOSPHATE ION (three-letter code: PO4) (formula: O_4P).



Mol	Chain	Residues	Atoms			ZeroOcc	AltConf
4	A	1	Total	O	P	0	0
			5	4	1		

- Molecule 5 is water.

Mol	Chain	Residues	Atoms		ZeroOcc	AltConf
5	A	171	Total 171	O 171	0	0
5	L	54	Total 54	O 54	0	0

4 Data and refinement statistics

Property	Value	Source
Space group	P 41 21 2	Depositor
Cell constants a, b, c, α , β , γ	59.04Å 59.04Å 158.97Å 90.00° 90.00° 90.00°	Depositor
Resolution (Å)	19.72 – 1.65 19.72 – 1.65	Depositor EDS
% Data completeness (in resolution range)	99.9 (19.72-1.65) 100.0 (19.72-1.65)	Depositor EDS
R_{merge}	0.08	Depositor
R_{sym}	(Not available)	Depositor
$\langle I/\sigma(I) \rangle$ ¹	2.44 (at 1.65Å)	Xtriage
Refinement program	REFMAC	Depositor
R, R_{free}	0.229 , 0.248 0.228 , 0.247	Depositor DCC
R_{free} test set	1739 reflections (5.00%)	wwPDB-VP
Wilson B-factor (Å ²)	18.1	Xtriage
Anisotropy	0.049	Xtriage
Bulk solvent k_{sol} (e/Å ³), B_{sol} (Å ²)	0.34 , 38.3	EDS
L-test for twinning ²	$\langle L \rangle = 0.48$, $\langle L^2 \rangle = 0.31$	Xtriage
Estimated twinning fraction	No twinning to report.	Xtriage
F_o, F_c correlation	0.94	EDS
Total number of atoms	2413	wwPDB-VP
Average B, all atoms (Å ²)	20.0	wwPDB-VP

Xtriage's analysis on translational NCS is as follows: *The largest off-origin peak in the Patterson function is 6.31% of the height of the origin peak. No significant pseudotranslation is detected.*

¹Intensities estimated from amplitudes.

²Theoretical values of $\langle |L| \rangle$, $\langle L^2 \rangle$ for acentric reflections are 0.5, 0.333 respectively for untwinned datasets, and 0.375, 0.2 for perfectly twinned datasets.

5 Model quality [i](#)

5.1 Standard geometry [i](#)

Bond lengths and bond angles in the following residue types are not validated in this section: ACE, MYR, PO4

The Z score for a bond length (or angle) is the number of standard deviations the observed value is removed from the expected value. A bond length (or angle) with $|Z| > 5$ is considered an outlier worth inspection. RMSZ is the root-mean-square of all Z scores of the bond lengths (or angles).

Mol	Chain	Bond lengths		Bond angles	
		RMSZ	$\# Z > 5$	RMSZ	$\# Z > 5$
1	A	0.33	0/1929	0.50	0/2608
2	L	0.30	0/352	0.46	0/478
All	All	0.33	0/2281	0.49	0/3086

There are no bond length outliers.

There are no bond angle outliers.

There are no chirality outliers.

There are no planarity outliers.

5.2 Too-close contacts [i](#)

In the following table, the Non-H and H(model) columns list the number of non-hydrogen atoms and hydrogen atoms in the chain respectively. The H(added) column lists the number of hydrogen atoms added and optimized by MolProbity. The Clashes column lists the number of clashes within the asymmetric unit, whereas Symm-Clashes lists symmetry-related clashes.

Mol	Chain	Non-H	H(model)	H(added)	Clashes	Symm-Clashes
1	A	1831	0	1815	12	0
2	L	337	0	350	1	0
3	A	15	0	27	1	0
4	A	5	0	0	0	0
5	A	171	0	0	1	1
5	L	54	0	0	0	1
All	All	2413	0	2192	13	2

The all-atom clashscore is defined as the number of clashes found per 1000 atoms (including hydrogen atoms). The all-atom clashscore for this structure is 3.

All (13) close contacts within the same asymmetric unit are listed below, sorted by their clash

magnitude.

Atom-1	Atom-2	Interatomic distance (Å)	Clash overlap (Å)
1:A:262:LEU:HD11	1:A:430:ARG:HG3	1.82	0.61
1:A:216:GLY:N	1:A:254:SER:HG	1.99	0.60
1:A:262:LEU:CD1	1:A:430:ARG:HG3	2.39	0.52
1:A:217:ARG:HH21	1:A:262:LEU:HD23	1.76	0.49
1:A:217:ARG:HG3	5:A:611:HOH:O	2.10	0.49
2:L:85:PRO:HD2	2:L:88:LEU:HD12	1.95	0.48
1:A:274:PHE:CZ	1:A:412:ALA:HB1	2.50	0.46
1:A:395:ILE:HD13	3:A:501:MYR:H51	1.95	0.46
1:A:217:ARG:HG2	1:A:428:ILE:HD12	1.97	0.46
1:A:321[B]:GLU:HG3	1:A:356:HIS:CD2	2.54	0.42
1:A:341:VAL:HG11	1:A:369:TYR:CE1	2.55	0.41
1:A:238:ASP:HB2	1:A:239:PRO:HD2	2.03	0.41
1:A:314:TYR:HB3	1:A:366[A]:LEU:HD12	2.02	0.41

All (2) symmetry-related close contacts are listed below. The label for Atom-2 includes the symmetry operator and encoded unit-cell translations to be applied.

Atom-1	Atom-2	Interatomic distance (Å)	Clash overlap (Å)
5:A:761:HOH:O	5:A:761:HOH:O[8_555]	1.67	0.53
5:L:203:HOH:O	5:L:203:HOH:O[7_555]	2.13	0.07

5.3 Torsion angles [i](#)

5.3.1 Protein backbone [i](#)

In the following table, the Percentiles column shows the percent Ramachandran outliers of the chain as a percentile score with respect to all X-ray entries followed by that with respect to entries of similar resolution.

The Analysed column shows the number of residues for which the backbone conformation was analysed, and the total number of residues.

Mol	Chain	Analysed	Favoured	Allowed	Outliers	Percentiles	
1	A	228/219 (104%)	223 (98%)	5 (2%)	0	100	100
2	L	42/42 (100%)	41 (98%)	1 (2%)	0	100	100
All	All	270/261 (103%)	264 (98%)	6 (2%)	0	100	100

There are no Ramachandran outliers to report.

5.3.2 Protein sidechains [i](#)

In the following table, the Percentiles column shows the percent sidechain outliers of the chain as a percentile score with respect to all X-ray entries followed by that with respect to entries of similar resolution.

The Analysed column shows the number of residues for which the sidechain conformation was analysed, and the total number of residues.

Mol	Chain	Analysed	Rotameric	Outliers	Percentiles	
1	A	212/199 (106%)	212 (100%)	0	100	100
2	L	39/37 (105%)	39 (100%)	0	100	100
All	All	251/236 (106%)	251 (100%)	0	100	100

There are no protein residues with a non-rotameric sidechain to report.

Sometimes sidechains can be flipped to improve hydrogen bonding and reduce clashes. All (1) such sidechains are listed below:

Mol	Chain	Res	Type
2	L	74	ASN

5.3.3 RNA [i](#)

There are no RNA molecules in this entry.

5.4 Non-standard residues in protein, DNA, RNA chains [i](#)

There are no non-standard protein/DNA/RNA residues in this entry.

5.5 Carbohydrates [i](#)

There are no monosaccharides in this entry.

5.6 Ligand geometry [i](#)

2 ligands are modelled in this entry.

In the following table, the Counts columns list the number of bonds (or angles) for which Mogul statistics could be retrieved, the number of bonds (or angles) that are observed in the model and the number of bonds (or angles) that are defined in the Chemical Component Dictionary. The Link column lists molecule types, if any, to which the group is linked. The Z score for a bond length (or angle) is the number of standard deviations the observed value is removed from the

expected value. A bond length (or angle) with $|Z| > 2$ is considered an outlier worth inspection. RMSZ is the root-mean-square of all Z scores of the bond lengths (or angles).

Mol	Type	Chain	Res	Link	Bond lengths			Bond angles		
					Counts	RMSZ	$\# Z > 2$	Counts	RMSZ	$\# Z > 2$
4	PO4	A	502	-	4,4,4	0.92	0	6,6,6	0.45	0
3	MYR	A	501	1	14,14,15	0.33	0	13,13,15	0.88	0

In the following table, the Chirals column lists the number of chiral outliers, the number of chiral centers analysed, the number of these observed in the model and the number defined in the Chemical Component Dictionary. Similar counts are reported in the Torsion and Rings columns. '-' means no outliers of that kind were identified.

Mol	Type	Chain	Res	Link	Chirals	Torsions	Rings
3	MYR	A	501	1	-	9/11/12/13	-

There are no bond length outliers.

There are no bond angle outliers.

There are no chirality outliers.

All (9) torsion outliers are listed below:

Mol	Chain	Res	Type	Atoms
3	A	501	MYR	C10-C11-C12-C13
3	A	501	MYR	C3-C4-C5-C6
3	A	501	MYR	C9-C10-C11-C12
3	A	501	MYR	C2-C3-C4-C5
3	A	501	MYR	C4-C5-C6-C7
3	A	501	MYR	C11-C12-C13-C14
3	A	501	MYR	C6-C7-C8-C9
3	A	501	MYR	C5-C6-C7-C8
3	A	501	MYR	C11-C10-C9-C8

There are no ring outliers.

1 monomer is involved in 1 short contact:

Mol	Chain	Res	Type	Clashes	Symm-Clashes
3	A	501	MYR	1	0

5.7 Other polymers [i](#)

There are no such residues in this entry.

5.8 Polymer linkage issues ⓘ

There are no chain breaks in this entry.

6 Fit of model and data

6.1 Protein, DNA and RNA chains

In the following table, the column labelled ‘#RSRZ> 2’ contains the number (and percentage) of RSRZ outliers, followed by percent RSRZ outliers for the chain as percentile scores relative to all X-ray entries and entries of similar resolution. The OWAB column contains the minimum, median, 95th percentile and maximum values of the occupancy-weighted average B-factor per residue. The column labelled ‘Q< 0.9’ lists the number of (and percentage) of residues with an average occupancy less than 0.9.

Mol	Chain	Analysed	<RSRZ>	#RSRZ>2	OWAB(Å ²)	Q<0.9
1	A	215/219 (98%)	1.05	29 (13%) 3 2	10, 17, 39, 54	0
2	L	40/42 (95%)	0.33	2 (5%) 28 27	12, 18, 26, 27	0
All	All	255/261 (97%)	0.93	31 (12%) 4 3	10, 18, 37, 54	0

All (31) RSRZ outliers are listed below:

Mol	Chain	Res	Type	RSRZ
1	A	261	TYR	13.2
1	A	422	HIS	11.8
1	A	260	PRO	7.9
1	A	255	PRO	7.2
1	A	421	GLU	6.8
1	A	253	SER	6.7
1	A	216	GLY	6.5
1	A	305	ASN	5.9
1	A	254	SER	5.8
1	A	354	ASN	5.6
1	A	218	SER	5.4
1	A	257	TYR	4.8
1	A	310	GLY	4.7
1	A	420	SER	4.4
1	A	252	GLN	4.2
1	A	217	ARG	3.6
1	A	434	GLU	3.4
1	A	258	SER	3.4
2	L	97	LYS	3.3
1	A	311	SER	3.2
1	A	304	THR	3.2
1	A	419	ALA	3.1
1	A	219	VAL	3.1
1	A	237	GLN	3.0

Continued on next page...

Continued from previous page...

Mol	Chain	Res	Type	RSRZ
1	A	355	GLY	3.0
1	A	379	HIS	2.9
1	A	256	SER	2.8
2	L	93	ASP	2.6
1	A	259	ASP	2.6
1	A	262	LEU	2.6
1	A	383	LYS	2.5

6.2 Non-standard residues in protein, DNA, RNA chains [i](#)

There are no non-standard protein/DNA/RNA residues in this entry.

6.3 Carbohydrates [i](#)

There are no monosaccharides in this entry.

6.4 Ligands [i](#)

In the following table, the Atoms column lists the number of modelled atoms in the group and the number defined in the chemical component dictionary. The B-factors column lists the minimum, median, 95th percentile and maximum values of B factors of atoms in the group. The column labelled 'Q< 0.9' lists the number of atoms with occupancy less than 0.9.

Mol	Type	Chain	Res	Atoms	RSCC	RSR	B-factors(\AA^2)	Q<0.9
3	MYR	A	501	15/16	0.78	0.18	26,30,32,32	0
4	PO4	A	502	5/5	0.95	0.19	33,33,34,34	0

6.5 Other polymers [i](#)

There are no such residues in this entry.