



wwPDB X-ray Structure Validation Summary Report ⓘ

Jun 19, 2024 – 11:17 AM EDT

PDB ID : 4H9X
Title : Structure of *Geobacillus kaustophilus* lactonase, mutant E101G/R230C/D266N with Zn²⁺ and bound N-butyryl-DL-homoserine lactone
Authors : Xue, B.; Chow, J.Y.; Yew, W.S.; Robinson, R.C.
Deposited on : 2012-09-25
Resolution : 2.20 Å(reported)

This is a wwPDB X-ray Structure Validation Summary Report for a publicly released PDB entry.

We welcome your comments at validation@mail.wwpdb.org

A user guide is available at

<https://www.wwpdb.org/validation/2017/XrayValidationReportHelp>

with specific help available everywhere you see the ⓘ symbol.

The types of validation reports are described at

<http://www.wwpdb.org/validation/2017/FAQs#types>.

The following versions of software and data (see [references ⓘ](#)) were used in the production of this report:

MolProbity	:	4.02b-467
Mogul	:	2022.3.0, CSD as543be (2022)
Xtriage (Phenix)	:	1.20.1
EDS	:	2.37.1
Percentile statistics	:	20191225.v01 (using entries in the PDB archive December 25th 2019)
Refmac	:	5.8.0158
CCP4	:	7.0.044 (Gargrove)
Ideal geometry (proteins)	:	Engh & Huber (2001)
Ideal geometry (DNA, RNA)	:	Parkinson et al. (1996)
Validation Pipeline (wwPDB-VP)	:	2.37.1

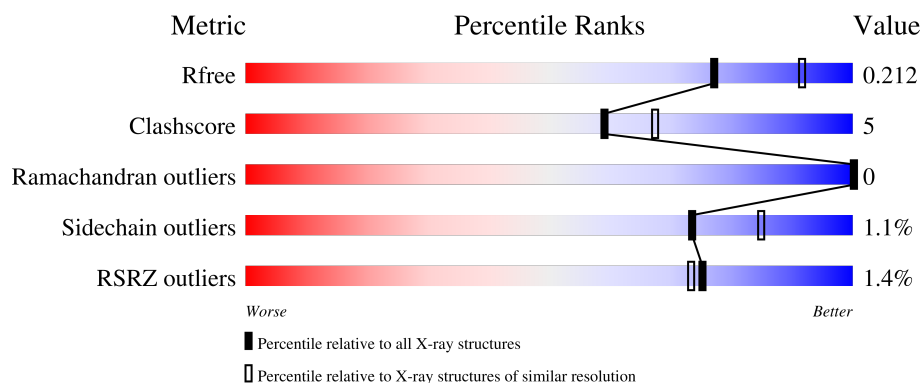
1 Overall quality at a glance

The following experimental techniques were used to determine the structure:

X-RAY DIFFRACTION

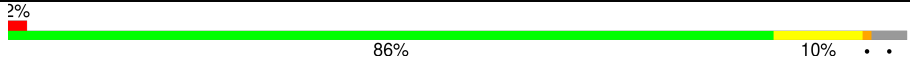

The reported resolution of this entry is 2.20 Å.

Percentile scores (ranging between 0-100) for global validation metrics of the entry are shown in the following graphic. The table shows the number of entries on which the scores are based.



Metric	Whole archive (#Entries)	Similar resolution (#Entries, resolution range(Å))
R_{free}	130704	4898 (2.20-2.20)
Clashscore	141614	5594 (2.20-2.20)
Ramachandran outliers	138981	5503 (2.20-2.20)
Sidechain outliers	138945	5504 (2.20-2.20)
RSRZ outliers	127900	4800 (2.20-2.20)

The table below summarises the geometric issues observed across the polymeric chains and their fit to the electron density. The red, orange, yellow and green segments of the lower bar indicate the fraction of residues that contain outliers for ≥ 3 , 2, 1 and 0 types of geometric quality criteria respectively. A grey segment represents the fraction of residues that are not modelled. The numeric value for each fraction is indicated below the corresponding segment, with a dot representing fractions $\leq 5\%$. The upper red bar (where present) indicates the fraction of residues that have poor fit to the electron density. The numeric value is given above the bar.

Mol	Chain	Length	Quality of chain
1	A	330	
1	B	330	

2 Entry composition

There are 6 unique types of molecules in this entry. The entry contains 5233 atoms, of which 0 are hydrogens and 0 are deuteriums.

In the tables below, the ZeroOcc column contains the number of atoms modelled with zero occupancy, the AltConf column contains the number of residues with at least one atom in alternate conformation and the Trace column contains the number of residues modelled with at most 2 atoms.

- Molecule 1 is a protein called Phosphotriesterase.

Mol	Chain	Residues	Atoms					ZeroOcc	AltConf	Trace
1	A	318	Total	C	N	O	S	0	0	0
			2507	1597	428	465	17			
1	B	318	Total	C	N	O	S	0	0	0
			2507	1597	428	465	17			

There are 14 discrepancies between the modelled and reference sequences:

Chain	Residue	Modelled	Actual	Comment	Reference
A	-3	GLY	-	EXPRESSION TAG	UNP Q5KZU5
A	-2	SER	-	EXPRESSION TAG	UNP Q5KZU5
A	-1	HIS	-	EXPRESSION TAG	UNP Q5KZU5
A	0	ASN	-	EXPRESSION TAG	UNP Q5KZU5
A	101	GLY	GLU	ENGINEERED MUTATION	UNP Q5KZU5
A	230	CYS	ARG	ENGINEERED MUTATION	UNP Q5KZU5
A	266	ASN	ASP	ENGINEERED MUTATION	UNP Q5KZU5
B	-3	GLY	-	EXPRESSION TAG	UNP Q5KZU5
B	-2	SER	-	EXPRESSION TAG	UNP Q5KZU5
B	-1	HIS	-	EXPRESSION TAG	UNP Q5KZU5
B	0	ASN	-	EXPRESSION TAG	UNP Q5KZU5
B	101	GLY	GLU	ENGINEERED MUTATION	UNP Q5KZU5
B	230	CYS	ARG	ENGINEERED MUTATION	UNP Q5KZU5
B	266	ASN	ASP	ENGINEERED MUTATION	UNP Q5KZU5

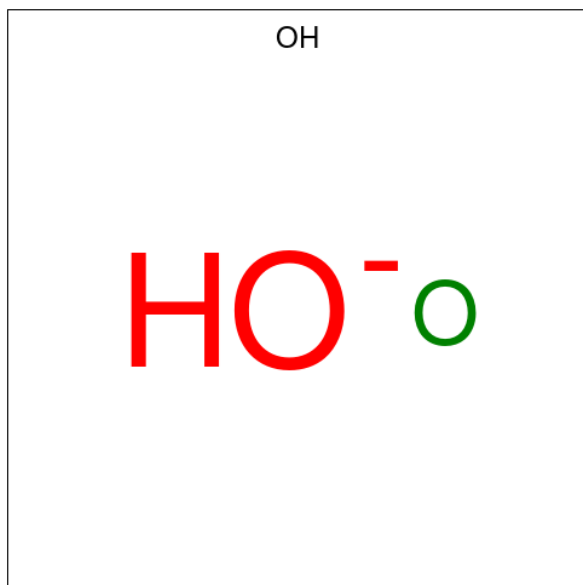
- Molecule 2 is FE (III) ION (three-letter code: FE) (formula: Fe).

Mol	Chain	Residues	Atoms		ZeroOcc	AltConf
2	A	1	Total	Fe	0	0
			1	1		
2	B	1	Total	Fe	0	0
			1	1		

- Molecule 3 is ZINC ION (three-letter code: ZN) (formula: Zn).

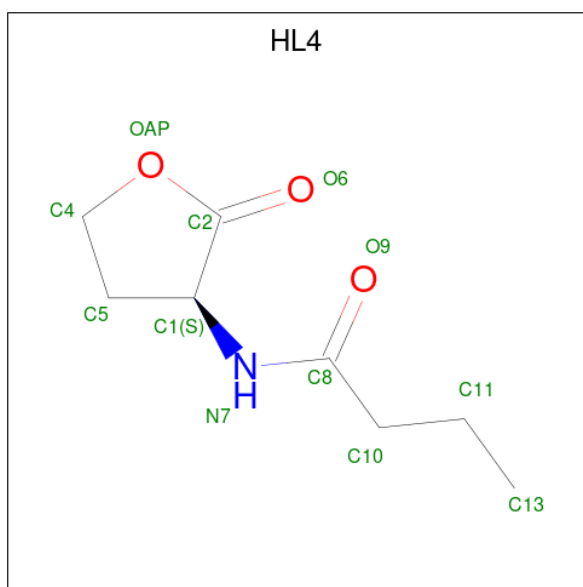
Mol	Chain	Residues	Atoms		ZeroOcc	AltConf
3	A	1	Total 1	Zn 1	0	0
3	B	1	Total 1	Zn 1	0	0

- Molecule 4 is HYDROXIDE ION (three-letter code: OH) (formula: HO).



Mol	Chain	Residues	Atoms		ZeroOcc	AltConf
4	A	1	Total 1	O 1	0	0
4	B	1	Total 1	O 1	0	0

- Molecule 5 is N-[(3S)-2-oxotetrahydrofuran-3-yl]butanamide (three-letter code: HL4) (formula: C₈H₁₃NO₃).



Mol	Chain	Residues	Atoms				ZeroOcc	AltConf
5	A	1	Total	C	N	O	0	0
			12	8	1	3		
5	B	1	Total	C	N	O	0	0
			12	8	1	3		

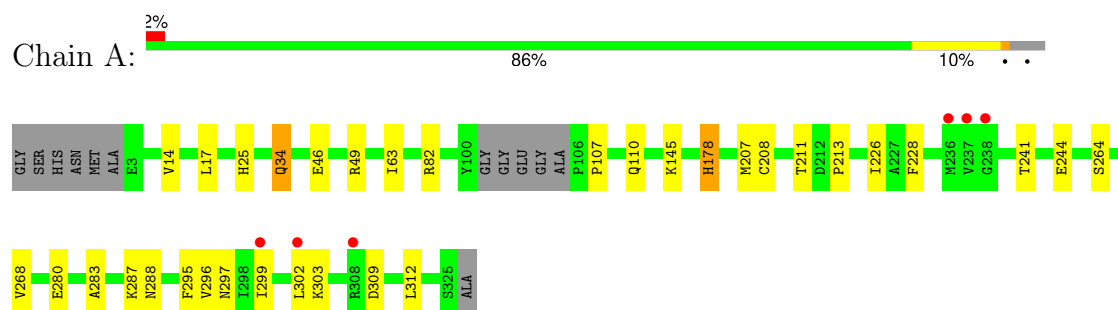
- Molecule 6 is water.

Mol	Chain	Residues	Atoms		ZeroOcc	AltConf
6	A	90	Total	O	0	0
			90	90		
6	B	99	Total	O	0	0
			99	99		

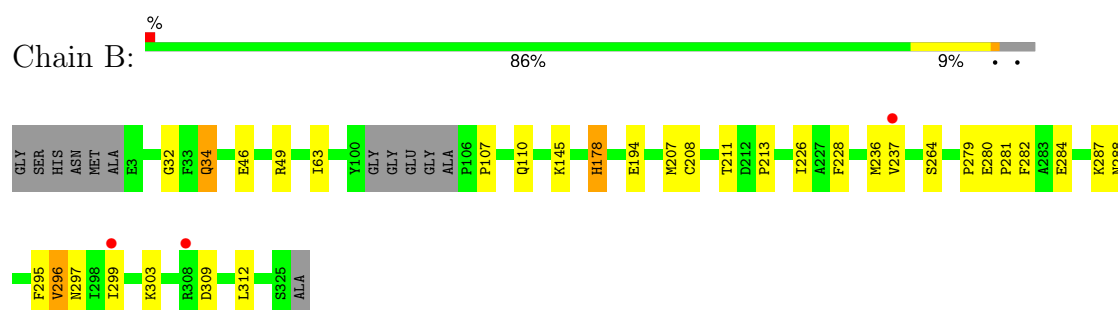
3 Residue-property plots [i](#)

These plots are drawn for all protein, RNA, DNA and oligosaccharide chains in the entry. The first graphic for a chain summarises the proportions of the various outlier classes displayed in the second graphic. The second graphic shows the sequence view annotated by issues in geometry and electron density. Residues are color-coded according to the number of geometric quality criteria for which they contain at least one outlier: green = 0, yellow = 1, orange = 2 and red = 3 or more. A red dot above a residue indicates a poor fit to the electron density ($RSRZ > 2$). Stretches of 2 or more consecutive residues without any outlier are shown as a green connector. Residues present in the sample, but not in the model, are shown in grey.

- Molecule 1: Phosphotriesterase



- Molecule 1: Phosphotriesterase



4 Data and refinement statistics

Property	Value	Source
Space group	P 1 21 1	Depositor
Cell constants a, b, c, α , β , γ	51.55Å 129.16Å 51.64Å 90.00° 95.84° 90.00°	Depositor
Resolution (Å)	19.85 – 2.20 47.73 – 2.20	Depositor EDS
% Data completeness (in resolution range)	95.4 (19.85-2.20) 94.9 (47.73-2.20)	Depositor EDS
R_{merge}	0.03	Depositor
R_{sym}	(Not available)	Depositor
$\langle I/\sigma(I) \rangle$ ¹	6.61 (at 2.20Å)	Xtriage
Refinement program	PHENIX 1.7.3_928	Depositor
R, R_{free}	0.176 , 0.215 0.175 , 0.212	Depositor DCC
R_{free} test set	1647 reflections (5.08%)	wwPDB-VP
Wilson B-factor (Å ²)	26.3	Xtriage
Anisotropy	0.071	Xtriage
Bulk solvent k_{sol} (e/Å ³), B_{sol} (Å ²)	0.34 , 29.6	EDS
L-test for twinning ²	$\langle L \rangle = 0.50$, $\langle L^2 \rangle = 0.33$	Xtriage
Estimated twinning fraction	0.467 for l,-k,h	Xtriage
F_o, F_c correlation	0.95	EDS
Total number of atoms	5233	wwPDB-VP
Average B, all atoms (Å ²)	38.0	wwPDB-VP

Xtriage's analysis on translational NCS is as follows: *The largest off-origin peak in the Patterson function is 6.60% of the height of the origin peak. No significant pseudotranslation is detected.*

¹Intensities estimated from amplitudes.

²Theoretical values of $\langle |L| \rangle$, $\langle L^2 \rangle$ for acentric reflections are 0.5, 0.333 respectively for untwinned datasets, and 0.375, 0.2 for perfectly twinned datasets.

5 Model quality [i](#)

5.1 Standard geometry [i](#)

Bond lengths and bond angles in the following residue types are not validated in this section: ZN, HL4, KCX, FE, OH

The Z score for a bond length (or angle) is the number of standard deviations the observed value is removed from the expected value. A bond length (or angle) with $|Z| > 5$ is considered an outlier worth inspection. RMSZ is the root-mean-square of all Z scores of the bond lengths (or angles).

Mol	Chain	Bond lengths		Bond angles	
		RMSZ	$\# Z > 5$	RMSZ	$\# Z > 5$
1	A	0.51	0/2552	0.58	0/3452
1	B	0.54	1/2552 (0.0%)	0.58	0/3452
All	All	0.53	1/5104 (0.0%)	0.58	0/6904

All (1) bond length outliers are listed below:

Mol	Chain	Res	Type	Atoms	Z	Observed(Å)	Ideal(Å)
1	B	296	VAL	CB-CG1	-5.15	1.42	1.52

There are no bond angle outliers.

There are no chirality outliers.

There are no planarity outliers.

5.2 Too-close contacts [i](#)

In the following table, the Non-H and H(model) columns list the number of non-hydrogen atoms and hydrogen atoms in the chain respectively. The H(added) column lists the number of hydrogen atoms added and optimized by MolProbity. The Clashes column lists the number of clashes within the asymmetric unit, whereas Symm-Clashes lists symmetry-related clashes.

Mol	Chain	Non-H	H(model)	H(added)	Clashes	Symm-Clashes
1	A	2507	0	2457	19	1
1	B	2507	0	2457	26	1
2	A	1	0	0	0	0
2	B	1	0	0	0	0
3	A	1	0	0	0	0
3	B	1	0	0	0	0
4	A	1	0	0	1	0
4	B	1	0	0	1	0

Continued on next page...

Continued from previous page...

Mol	Chain	Non-H	H(model)	H(added)	Clashes	Symm-Clashes
5	A	12	0	13	3	0
5	B	12	0	13	1	0
6	A	90	0	0	0	0
6	B	99	0	0	0	0
All	All	5233	0	4940	47	1

The all-atom clashscore is defined as the number of clashes found per 1000 atoms (including hydrogen atoms). The all-atom clashscore for this structure is 5.

The worst 5 of 47 close contacts within the same asymmetric unit are listed below, sorted by their clash magnitude.

Atom-1	Atom-2	Interatomic distance (Å)	Clash overlap (Å)
1:A:296:VAL:HG12	1:A:297:ASN:OD1	1.58	1.00
1:B:32:GLY:H	1:B:34:GLN:HE22	1.09	0.97
1:B:296:VAL:HG12	1:B:297:ASN:OD1	1.76	0.86
1:B:280:GLU:N	1:B:281:PRO:HD2	1.94	0.82
1:B:32:GLY:H	1:B:34:GLN:NE2	1.79	0.79

All (1) symmetry-related close contacts are listed below. The label for Atom-2 includes the symmetry operator and encoded unit-cell translations to be applied.

Atom-1	Atom-2	Interatomic distance (Å)	Clash overlap (Å)
1:A:82:ARG:NH2	1:B:194:GLU:OE1[1_556]	2.17	0.03

5.3 Torsion angles

5.3.1 Protein backbone

In the following table, the Percentiles column shows the percent Ramachandran outliers of the chain as a percentile score with respect to all X-ray entries followed by that with respect to entries of similar resolution.

The Analysed column shows the number of residues for which the backbone conformation was analysed, and the total number of residues.

Mol	Chain	Analysed	Favoured	Allowed	Outliers	Percentiles	
1	A	313/330 (95%)	302 (96%)	11 (4%)	0	100	100
1	B	313/330 (95%)	303 (97%)	10 (3%)	0	100	100

Continued on next page...

Continued from previous page...

Mol	Chain	Analysed	Favoured	Allowed	Outliers	Percentiles	
All	All	626/660 (95%)	605 (97%)	21 (3%)	0	100	100

There are no Ramachandran outliers to report.

5.3.2 Protein sidechains [i](#)

In the following table, the Percentiles column shows the percent sidechain outliers of the chain as a percentile score with respect to all X-ray entries followed by that with respect to entries of similar resolution.

The Analysed column shows the number of residues for which the sidechain conformation was analysed, and the total number of residues.

Mol	Chain	Analysed	Rotameric	Outliers	Percentiles	
1	A	261/266 (98%)	258 (99%)	3 (1%)	73	85
1	B	261/266 (98%)	258 (99%)	3 (1%)	73	85
All	All	522/532 (98%)	516 (99%)	6 (1%)	73	85

5 of 6 residues with a non-rotameric sidechain are listed below:

Mol	Chain	Res	Type
1	B	34	GLN
1	B	178	HIS
1	B	264	SER
1	A	178	HIS
1	A	34	GLN

Sometimes sidechains can be flipped to improve hydrogen bonding and reduce clashes. All (1) such sidechains are listed below:

Mol	Chain	Res	Type
1	B	34	GLN

5.3.3 RNA [i](#)

There are no RNA molecules in this entry.

5.4 Non-standard residues in protein, DNA, RNA chains [i](#)

2 non-standard protein/DNA/RNA residues are modelled in this entry.

In the following table, the Counts columns list the number of bonds (or angles) for which Mogul statistics could be retrieved, the number of bonds (or angles) that are observed in the model and the number of bonds (or angles) that are defined in the Chemical Component Dictionary. The Link column lists molecule types, if any, to which the group is linked. The Z score for a bond length (or angle) is the number of standard deviations the observed value is removed from the expected value. A bond length (or angle) with $|Z| > 2$ is considered an outlier worth inspection. RMSZ is the root-mean-square of all Z scores of the bond lengths (or angles).

Mol	Type	Chain	Res	Link	Bond lengths			Bond angles		
					Counts	RMSZ	$\# Z > 2$	Counts	RMSZ	$\# Z > 2$
1	KCX	B	145	1,2,3	10,11,12	0.94	0	6,12,14	1.59	1 (16%)
1	KCX	A	145	1,2,3	10,11,12	0.95	0	6,12,14	1.44	1 (16%)

In the following table, the Chirals column lists the number of chiral outliers, the number of chiral centers analysed, the number of these observed in the model and the number defined in the Chemical Component Dictionary. Similar counts are reported in the Torsion and Rings columns. '-' means no outliers of that kind were identified.

Mol	Type	Chain	Res	Link	Chirals	Torsions	Rings
1	KCX	B	145	1,2,3	-	0/9/10/12	-
1	KCX	A	145	1,2,3	-	0/9/10/12	-

There are no bond length outliers.

All (2) bond angle outliers are listed below:

Mol	Chain	Res	Type	Atoms	Z	Observed($^{\circ}$)	Ideal($^{\circ}$)
1	B	145	KCX	OQ1-CX-NZ	-2.82	120.64	124.92
1	A	145	KCX	OQ1-CX-NZ	-2.32	121.39	124.92

There are no chirality outliers.

There are no torsion outliers.

There are no ring outliers.

No monomer is involved in short contacts.

5.5 Carbohydrates

There are no monosaccharides in this entry.

5.6 Ligand geometry

Of 8 ligands modelled in this entry, 4 are monoatomic and 2 are modelled with single atom - leaving 2 for Mogul analysis.

In the following table, the Counts columns list the number of bonds (or angles) for which Mogul statistics could be retrieved, the number of bonds (or angles) that are observed in the model and the number of bonds (or angles) that are defined in the Chemical Component Dictionary. The Link column lists molecule types, if any, to which the group is linked. The Z score for a bond length (or angle) is the number of standard deviations the observed value is removed from the expected value. A bond length (or angle) with $|Z| > 2$ is considered an outlier worth inspection. RMSZ is the root-mean-square of all Z scores of the bond lengths (or angles).

Mol	Type	Chain	Res	Link	Bond lengths			Bond angles		
					Counts	RMSZ	# Z > 2	Counts	RMSZ	# Z > 2
5	HL4	B	404	-	12,12,12	2.44	4 (33%)	11,15,15	2.32	5 (45%)
5	HL4	A	404	-	12,12,12	2.45	4 (33%)	11,15,15	2.33	5 (45%)

In the following table, the Chirals column lists the number of chiral outliers, the number of chiral centers analysed, the number of these observed in the model and the number defined in the Chemical Component Dictionary. Similar counts are reported in the Torsion and Rings columns. '-' means no outliers of that kind were identified.

Mol	Type	Chain	Res	Link	Chirals	Torsions	Rings
5	HL4	B	404	-	-	0/7/17/17	0/1/1/1
5	HL4	A	404	-	-	1/7/17/17	0/1/1/1

The worst 5 of 8 bond length outliers are listed below:

Mol	Chain	Res	Type	Atoms	Z	Observed(Å)	Ideal(Å)
5	B	404	HL4	C8-N7	6.21	1.47	1.34
5	A	404	HL4	C8-N7	6.20	1.47	1.34
5	A	404	HL4	C5-C1	-3.70	1.39	1.54
5	B	404	HL4	C5-C1	-3.67	1.40	1.54
5	A	404	HL4	OAP-C4	-2.94	1.38	1.46

The worst 5 of 10 bond angle outliers are listed below:

Mol	Chain	Res	Type	Atoms	Z	Observed(°)	Ideal(°)
5	B	404	HL4	C10-C8-N7	4.21	123.28	115.86
5	A	404	HL4	C10-C8-N7	4.15	123.17	115.86
5	B	404	HL4	OAP-C2-O6	3.09	124.72	121.43
5	A	404	HL4	O9-C8-N7	-2.98	117.90	122.95
5	B	404	HL4	O9-C8-N7	-2.94	117.98	122.95

There are no chirality outliers.

All (1) torsion outliers are listed below:

Mol	Chain	Res	Type	Atoms
5	A	404	HL4	C8-C10-C11-C13

There are no ring outliers.

2 monomers are involved in 4 short contacts:

Mol	Chain	Res	Type	Clashes	Symm-Clashes
5	B	404	HL4	1	0
5	A	404	HL4	3	0

5.7 Other polymers [i](#)

There are no such residues in this entry.

5.8 Polymer linkage issues [i](#)

There are no chain breaks in this entry.

6 Fit of model and data [i](#)

6.1 Protein, DNA and RNA chains [i](#)

In the following table, the column labelled ‘#RSRZ> 2’ contains the number (and percentage) of RSRZ outliers, followed by percent RSRZ outliers for the chain as percentile scores relative to all X-ray entries and entries of similar resolution. The OWAB column contains the minimum, median, 95th percentile and maximum values of the occupancy-weighted average B-factor per residue. The column labelled ‘Q< 0.9’ lists the number of (and percentage) of residues with an average occupancy less than 0.9.

Mol	Chain	Analysed	<RSRZ>	#RSRZ>2	OWAB(Å ²)	Q<0.9
1	A	317/330 (96%)	-0.23	6 (1%) 66 65	13, 35, 70, 88	0
1	B	317/330 (96%)	-0.28	3 (0%) 84 83	12, 35, 70, 91	0
All	All	634/660 (96%)	-0.26	9 (1%) 75 73	12, 35, 70, 91	0

The worst 5 of 9 RSRZ outliers are listed below:

Mol	Chain	Res	Type	RSRZ
1	B	308	ARG	4.1
1	B	237	VAL	3.5
1	A	308	ARG	3.2
1	A	299	ILE	3.0
1	A	238	GLY	2.6

6.2 Non-standard residues in protein, DNA, RNA chains [i](#)

In the following table, the Atoms column lists the number of modelled atoms in the group and the number defined in the chemical component dictionary. The B-factors column lists the minimum, median, 95th percentile and maximum values of B factors of atoms in the group. The column labelled ‘Q< 0.9’ lists the number of atoms with occupancy less than 0.9.

Mol	Type	Chain	Res	Atoms	RSCC	RSR	B-factors(Å ²)	Q<0.9
1	KCX	B	145	12/13	0.96	0.10	8,22,47,49	0
1	KCX	A	145	12/13	0.97	0.12	4,17,49,52	0

6.3 Carbohydrates [i](#)

There are no monosaccharides in this entry.

6.4 Ligands [i](#)

In the following table, the Atoms column lists the number of modelled atoms in the group and the number defined in the chemical component dictionary. The B-factors column lists the minimum, median, 95th percentile and maximum values of B factors of atoms in the group. The column labelled 'Q< 0.9' lists the number of atoms with occupancy less than 0.9.

Mol	Type	Chain	Res	Atoms	RSCC	RSR	B-factors(Å ²)	Q<0.9
5	HL4	B	404	12/12	0.81	0.32	36,48,82,84	12
5	HL4	A	404	12/12	0.87	0.26	35,45,78,83	12
4	OH	B	403	1/1	0.90	0.12	25,25,25,25	0
4	OH	A	403	1/1	0.91	0.11	24,24,24,24	0
3	ZN	A	402	1/1	0.98	0.09	36,36,36,36	1
3	ZN	B	402	1/1	0.98	0.10	36,36,36,36	1
2	FE	A	401	1/1	0.99	0.12	23,23,23,23	0
2	FE	B	401	1/1	0.99	0.13	23,23,23,23	0

6.5 Other polymers [i](#)

There are no such residues in this entry.