



# Full wwPDB X-ray Structure Validation Report ⓘ

Jun 19, 2024 – 01:51 PM EDT

PDB ID : 4HAW  
Title : Crystal structure of CRM1 inhibitor Leptomycin B in complex with CRM1(K548A)-Ran-RanBP1  
Authors : Sun, Q.; Chook, Y.M.  
Deposited on : 2012-09-27  
Resolution : 1.90 Å(reported)

This is a Full wwPDB X-ray Structure Validation Report for a publicly released PDB entry.

We welcome your comments at [validation@mail.wwpdb.org](mailto:validation@mail.wwpdb.org)

A user guide is available at

<https://www.wwpdb.org/validation/2017/XrayValidationReportHelp>

with specific help available everywhere you see the ⓘ symbol.

The types of validation reports are described at

<http://www.wwpdb.org/validation/2017/FAQs#types>.

---

The following versions of software and data (see [references ⓘ](#)) were used in the production of this report:

MolProbity	:	4.02b-467
Mogul	:	2022.3.0, CSD as543be (2022)
Xtriage (Phenix)	:	1.20.1
EDS	:	2.37.1
buster-report	:	1.1.7 (2018)
Percentile statistics	:	20191225.v01 (using entries in the PDB archive December 25th 2019)
Refmac	:	5.8.0158
CCP4	:	7.0.044 (Gargrove)
Ideal geometry (proteins)	:	Engh & Huber (2001)
Ideal geometry (DNA, RNA)	:	Parkinson et al. (1996)
Validation Pipeline (wwPDB-VP)	:	2.37.1

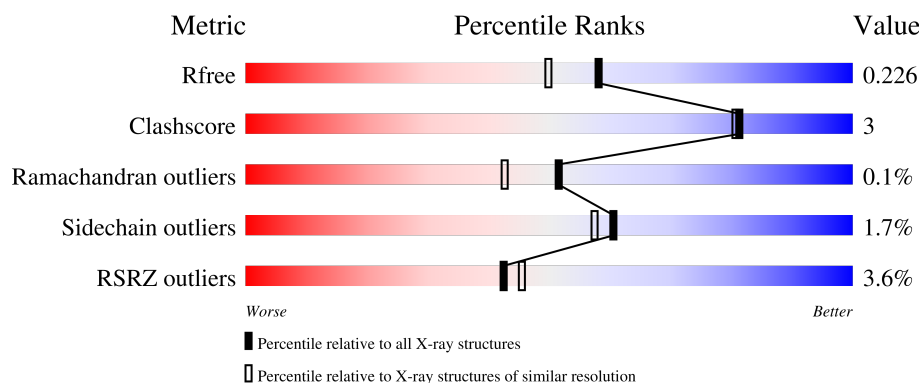
# 1 Overall quality at a glance

The following experimental techniques were used to determine the structure:

## *X-RAY DIFFRACTION*

The reported resolution of this entry is 1.90 Å.

Percentile scores (ranging between 0-100) for global validation metrics of the entry are shown in the following graphic. The table shows the number of entries on which the scores are based.



Metric	Whole archive (#Entries)	Similar resolution (#Entries, resolution range(Å))
$R_{free}$	130704	6207 (1.90-1.90)
Clashscore	141614	6847 (1.90-1.90)
Ramachandran outliers	138981	6760 (1.90-1.90)
Sidechain outliers	138945	6760 (1.90-1.90)
RSRZ outliers	127900	6082 (1.90-1.90)

The table below summarises the geometric issues observed across the polymeric chains and their fit to the electron density. The red, orange, yellow and green segments of the lower bar indicate the fraction of residues that contain outliers for  $\geq 3$ , 2, 1 and 0 types of geometric quality criteria respectively. A grey segment represents the fraction of residues that are not modelled. The numeric value for each fraction is indicated below the corresponding segment, with a dot representing fractions  $\leq 5\%$ . The upper red bar (where present) indicates the fraction of residues that have poor fit to the electron density. The numeric value is given above the bar.

Mol	Chain	Length	Quality of chain
1	A	216	<div> <div>4%</div> <div> <div></div> <div>85%</div> <div>5% • 9%</div> </div> </div>
2	B	140	<div> <div>11%</div> <div> <div></div> <div>86%</div> <div>5% •• 6%</div> </div> </div>
3	C	1023	<div> <div>2%</div> <div> <div></div> <div>92%</div> <div>6% ••</div> </div> </div>

## 2 Entry composition

There are 10 unique types of molecules in this entry. The entry contains 12385 atoms, of which 0 are hydrogens and 0 are deuteriums.

In the tables below, the ZeroOcc column contains the number of atoms modelled with zero occupancy, the AltConf column contains the number of residues with at least one atom in alternate conformation and the Trace column contains the number of residues modelled with at most 2 atoms.

- Molecule 1 is a protein called GTP-binding nuclear protein Ran.

Mol	Chain	Residues	Atoms					ZeroOcc	AltConf	Trace
1	A	196	Total	C	N	O	S	0	4	0
			1609	1038	279	286	6			

- Molecule 2 is a protein called Ran-specific GTPase-activating protein 1.

Mol	Chain	Residues	Atoms					ZeroOcc	AltConf	Trace
2	B	131	Total	C	N	O	S	0	1	0
			1088	692	189	202	5			

There is a discrepancy between the modelled and reference sequences:

Chain	Residue	Modelled	Actual	Comment	Reference
B	98	LYS	ALA	CONFLICT	UNP P41920

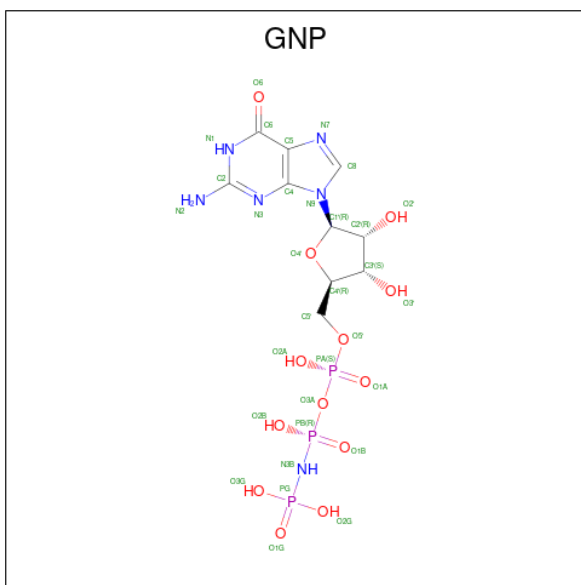
- Molecule 3 is a protein called Exportin-1.

Mol	Chain	Residues	Atoms					ZeroOcc	AltConf	Trace
3	C	1012	Total	C	N	O	S	0	30	0
			8371	5378	1372	1579	42			

There are 5 discrepancies between the modelled and reference sequences:

Chain	Residue	Modelled	Actual	Comment	Reference
C	-1	GLY	-	EXPRESSION TAG	UNP P30822
C	0	ALA	-	EXPRESSION TAG	UNP P30822
C	539	CYS	THR	ENGINEERED MUTATION	UNP P30822
C	548	ALA	LYS	ENGINEERED MUTATION	UNP P30822
C	1022	CYS	TYR	ENGINEERED MUTATION	UNP P30822

- Molecule 4 is PHOSPHOAMINOPHOSPHONIC ACID-GUANYLATE ESTER (three-letter code: GNP) (formula: C<sub>10</sub>H<sub>17</sub>N<sub>6</sub>O<sub>13</sub>P<sub>3</sub>).

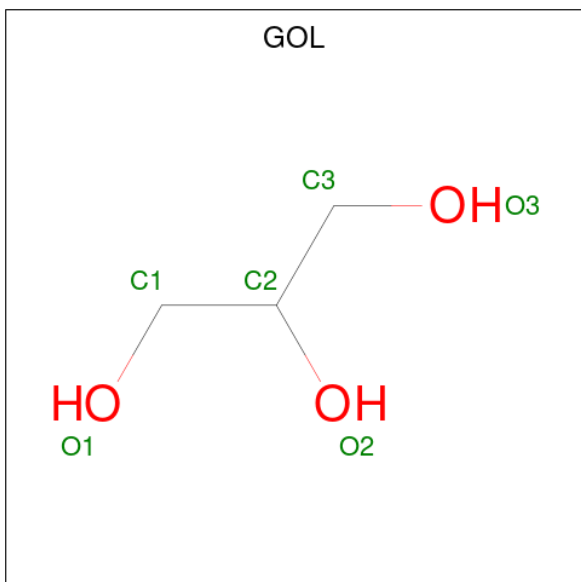


Mol	Chain	Residues	Atoms					ZeroOcc	AltConf
4	A	1	Total	C	N	O	P	0	0
			32	10	6	13	3		

- Molecule 5 is MAGNESIUM ION (three-letter code: MG) (formula: Mg).

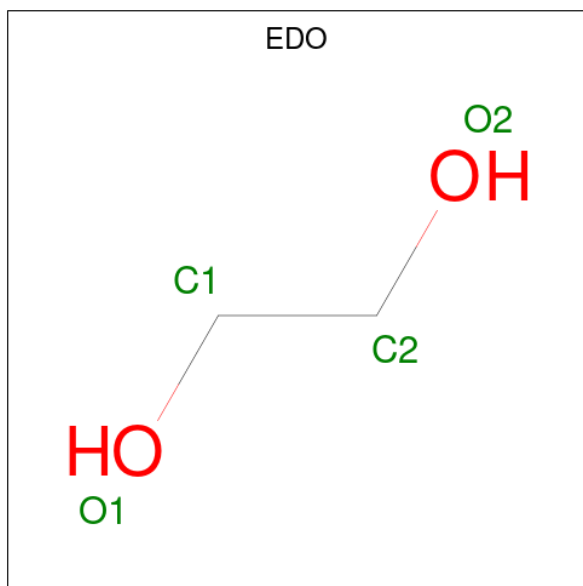
Mol	Chain	Residues	Atoms	ZeroOcc	AltConf
5	A	1	Total Mg 1 1	0	0
5	C	1	Total Mg 1 1	0	0

- Molecule 6 is GLYCEROL (three-letter code: GOL) (formula:  $\text{C}_3\text{H}_8\text{O}_3$ ).



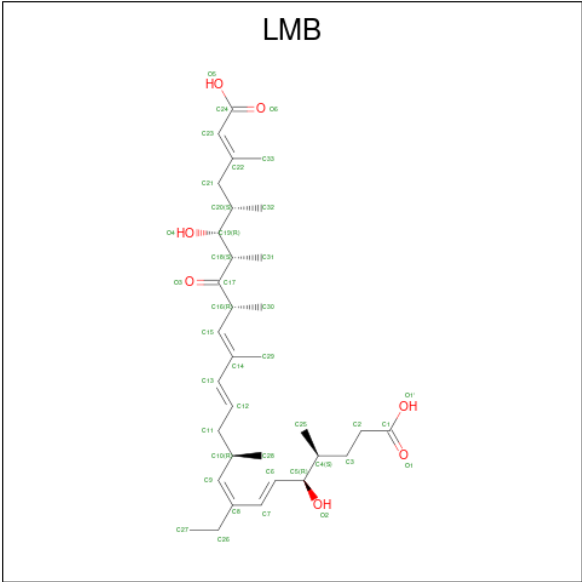
Mol	Chain	Residues	Atoms			ZeroOcc	AltConf
6	A	1	Total	C	O	0	0
			6	3	3		
6	C	1	Total	C	O	0	0
			6	3	3		
6	C	1	Total	C	O	0	0
			6	3	3		

- Molecule 7 is 1,2-ETHANEDIOL (three-letter code: EDO) (formula:  $C_2H_6O_2$ ).



Mol	Chain	Residues	Atoms			ZeroOcc	AltConf
7	A	1	Total	C	O	0	0
			4	2	2		
7	C	1	Total	C	O	0	0
			4	2	2		

- Molecule 8 is Leptomycin B, bound form (three-letter code: LMB) (formula:  $C_{33}H_{52}O_7$ ).



Mol	Chain	Residues	Atoms		ZeroOcc	AltConf
8	C	1	Total	C O	0	0
			40	33 7		

- Molecule 9 is CHLORIDE ION (three-letter code: CL) (formula: Cl).

Mol	Chain	Residues	Atoms		ZeroOcc	AltConf
9	C	3	Total	Cl	0	0
			3	3		


- Molecule 10 is water.

Mol	Chain	Residues	Atoms		ZeroOcc	AltConf
10	A	199	Total	O	0	0
			199	199		
10	B	66	Total	O	0	0
			66	66		
10	C	949	Total	O	0	0
			949	949		

### 3 Residue-property plots [i](#)


These plots are drawn for all protein, RNA, DNA and oligosaccharide chains in the entry. The first graphic for a chain summarises the proportions of the various outlier classes displayed in the second graphic. The second graphic shows the sequence view annotated by issues in geometry and electron density. Residues are color-coded according to the number of geometric quality criteria for which they contain at least one outlier: green = 0, yellow = 1, orange = 2 and red = 3 or more. A red dot above a residue indicates a poor fit to the electron density ( $RSRZ > 2$ ). Stretches of 2 or more consecutive residues without any outlier are shown as a green connector. Residues present in the sample, but not in the model, are shown in grey.

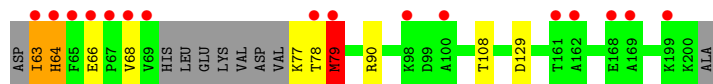
- Molecule 1: GTP-binding nuclear protein Ran

Chain A: 



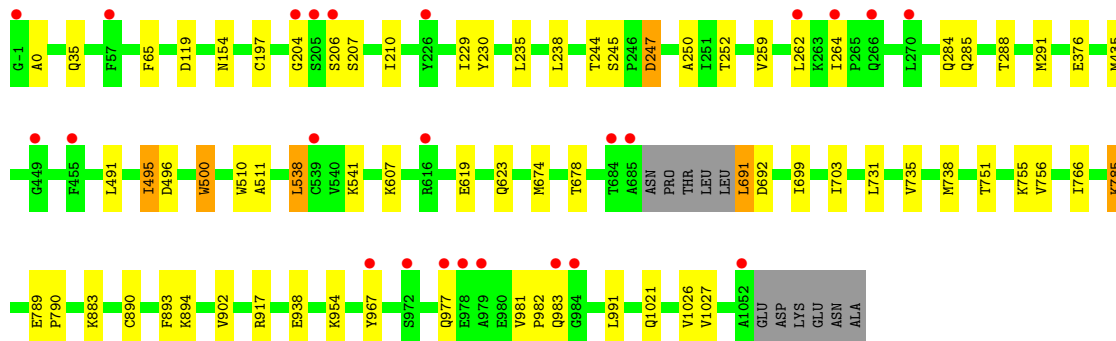
- Molecule 2: Ran-specific GTPase-activating protein 1

Chain B: 



- Molecule 3: Exportin-1

Chain C: 



## 4 Data and refinement statistics

Property	Value	Source
Space group	P 43 21 2	Depositor
Cell constants a, b, c, $\alpha$ , $\beta$ , $\gamma$	106.57Å 106.57Å 306.97Å 90.00° 90.00° 90.00°	Depositor
Resolution (Å)	50.00 – 1.90 47.10 – 1.90	Depositor EDS
% Data completeness (in resolution range)	97.0 (50.00-1.90) 97.0 (47.10-1.90)	Depositor EDS
$R_{merge}$	(Not available)	Depositor
$R_{sym}$	(Not available)	Depositor
$\langle I/\sigma(I) \rangle$ <sup>1</sup>	1.88 (at 1.90Å)	Xtriage
Refinement program	REFMAC 5.6.0117	Depositor
R, $R_{free}$	0.165 , 0.209 0.190 , 0.226	Depositor DCC
$R_{free}$ test set	6803 reflections (5.02%)	wwPDB-VP
Wilson B-factor (Å <sup>2</sup> )	29.7	Xtriage
Anisotropy	0.276	Xtriage
Bulk solvent $k_{sol}$ (e/Å <sup>3</sup> ), $B_{sol}$ (Å <sup>2</sup> )	0.33 , 45.9	EDS
L-test for twinning <sup>2</sup>	$\langle  L  \rangle = 0.48$ , $\langle L^2 \rangle = 0.30$	Xtriage
Estimated twinning fraction	No twinning to report.	Xtriage
$F_o, F_c$ correlation	0.96	EDS
Total number of atoms	12385	wwPDB-VP
Average B, all atoms (Å <sup>2</sup> )	30.0	wwPDB-VP

Xtriage's analysis on translational NCS is as follows: *The largest off-origin peak in the Patterson function is 4.16% of the height of the origin peak. No significant pseudotranslation is detected.*

<sup>1</sup>Intensities estimated from amplitudes.

<sup>2</sup>Theoretical values of  $\langle |L| \rangle$ ,  $\langle L^2 \rangle$  for acentric reflections are 0.5, 0.333 respectively for untwinned datasets, and 0.375, 0.2 for perfectly twinned datasets.



## 5 Model quality

### 5.1 Standard geometry

Bond lengths and bond angles in the following residue types are not validated in this section: GOL, LMB, CL, MG, EDO, GNP

The Z score for a bond length (or angle) is the number of standard deviations the observed value is removed from the expected value. A bond length (or angle) with  $|Z| > 5$  is considered an outlier worth inspection. RMSZ is the root-mean-square of all Z scores of the bond lengths (or angles).

Mol	Chain	Bond lengths		Bond angles	
		RMSZ	$\# Z  > 5$	RMSZ	$\# Z  > 5$
1	A	0.52	0/1653	0.62	0/2234
2	B	0.52	1/1107 (0.1%)	0.65	2/1477 (0.1%)
3	C	0.51	3/8577 (0.0%)	0.56	0/11618
All	All	0.52	4/11337 (0.0%)	0.58	2/15329 (0.0%)

All (4) bond length outliers are listed below:

Mol	Chain	Res	Type	Atoms	Z	Observed(Å)	Ideal(Å)
2	B	79	MET	C-N	-5.75	1.20	1.34
3	C	376	GLU	C-N	5.68	1.45	1.34
3	C	510	TRP	CD2-CE2	5.13	1.47	1.41
3	C	500	TRP	CD2-CE2	5.07	1.47	1.41

All (2) bond angle outliers are listed below:

Mol	Chain	Res	Type	Atoms	Z	Observed(°)	Ideal(°)
2	B	79	MET	O-C-N	6.55	133.18	122.70
2	B	79	MET	CA-C-N	-5.19	105.79	117.20

There are no chirality outliers.

There are no planarity outliers.

### 5.2 Too-close contacts

In the following table, the Non-H and H(model) columns list the number of non-hydrogen atoms and hydrogen atoms in the chain respectively. The H(added) column lists the number of hydrogen atoms added and optimized by MolProbity. The Clashes column lists the number of clashes within the asymmetric unit, whereas Symm-Clashes lists symmetry-related clashes.

Mol	Chain	Non-H	H(model)	H(added)	Clashes	Symm-Clashes
1	A	1609	0	1622	9	0
2	B	1088	0	1091	10	1
3	C	8371	0	8449	42	0
4	A	32	0	13	0	0
5	A	1	0	0	0	0
5	C	1	0	0	0	0
6	A	6	0	8	1	0
6	C	12	0	16	0	0
7	A	4	0	6	0	0
7	C	4	0	6	0	0
8	C	40	0	49	2	0
9	C	3	0	0	0	0
10	A	199	0	0	1	0
10	B	66	0	0	1	0
10	C	949	0	0	6	3
All	All	12385	0	11260	59	3

The all-atom clashscore is defined as the number of clashes found per 1000 atoms (including hydrogen atoms). The all-atom clashscore for this structure is 3.

All (59) close contacts within the same asymmetric unit are listed below, sorted by their clash magnitude.

Atom-1	Atom-2	Interatomic distance (Å)	Clash overlap (Å)
3:C:981:VAL:HG22	3:C:982:PRO:HD2	1.41	1.00
3:C:691:LEU:HD13	3:C:738:MET:CE	2.08	0.84
2:B:64:HIS:CD2	2:B:64:HIS:O	2.40	0.74
3:C:981:VAL:HG22	3:C:982:PRO:CD	2.18	0.74
3:C:981:VAL:CG2	3:C:982:PRO:HD2	2.19	0.70
3:C:691:LEU:HD13	3:C:738:MET:HE2	1.73	0.69
2:B:68:VAL:HG23	10:B:366:HOH:O	1.91	0.69
1:A:198:GLU:N	6:A:303:GOL:HO3	1.91	0.69
3:C:244:THR:HG22	3:C:285:GLN:OE1	1.93	0.68
3:C:247[A]:ASP:OD2	3:C:247[A]:ASP:N	2.26	0.64
1:A:76[A]:ARG:HH11	1:A:76[A]:ARG:HB2	1.62	0.63
3:C:902:VAL:HG13	3:C:954:LYS:HZ2	1.64	0.62
3:C:229:ILE:HG13	3:C:262:LEU:HD11	1.83	0.60
3:C:674:MET:O	3:C:678:THR:HG23	2.03	0.58
2:B:78:THR:O	2:B:79:MET:HB2	2.05	0.56
3:C:890:CYS:O	3:C:893[B]:PHE:HB2	2.05	0.56
3:C:204:GLY:HA3	3:C:210:ILE:HD11	1.88	0.55
3:C:735:VAL:HA	3:C:738:MET:HE3	1.89	0.54
3:C:703[B]:ILE:HD13	3:C:766:ILE:HG13	1.90	0.54

*Continued on next page...*

*Continued from previous page...*

Atom-1	Atom-2	Interatomic distance (Å)	Clash overlap (Å)
3:C:619:GLU:OE2	3:C:623[A]:GLN:NE2	2.39	0.53
2:B:64:HIS:O	2:B:64:HIS:CG	2.62	0.52
3:C:206:SER:HB3	3:C:247[A]:ASP:OD1	2.10	0.52
3:C:692:ASP:HA	10:C:2119:HOH:O	2.08	0.52
2:B:78:THR:O	2:B:79:MET:CB	2.58	0.51
2:B:90:ARG:NH2	2:B:129:ASP:OD2	2.45	0.50
3:C:230:TYR:CE2	3:C:264:ILE:HD11	2.46	0.50
3:C:197[B]:CYS:SG	10:C:2135:HOH:O	2.60	0.49
3:C:691:LEU:HD13	3:C:738:MET:SD	2.52	0.49
1:A:216:LEU:HD23	2:B:108:THR:HG23	1.94	0.48
3:C:981:VAL:CG2	3:C:982:PRO:CD	2.86	0.48
1:A:117:ILE:HB	1:A:144:LEU:HD22	1.96	0.48
3:C:785:LYS:HD3	3:C:785:LYS:C	2.32	0.48
3:C:235:LEU:HD21	3:C:259:VAL:HG11	1.96	0.47
3:C:894:LYS:NZ	3:C:938:GLU:OE1	2.44	0.47
3:C:495:ILE:HD13	3:C:496:ASP:N	2.30	0.47
3:C:0:ALA:HB1	10:C:1682:HOH:O	2.15	0.46
3:C:699:ILE:HG21	3:C:731:LEU:HD21	1.97	0.45
3:C:917[B]:ARG:NH1	10:C:1992:HOH:O	2.49	0.45
1:A:81:ILE:HD11	3:C:65:PHE:CG	2.52	0.45
8:C:1101:LMB:O6	8:C:1101:LMB:C33	2.64	0.45
1:A:118:VAL:HG22	1:A:163:TRP:CE3	2.53	0.44
1:A:180:PRO:HA	2:B:78:THR:O	2.18	0.43
3:C:119:ASP:OD2	3:C:154:ASN:ND2	2.51	0.43
3:C:207:SER:OG	3:C:210:ILE:HG12	2.18	0.43
1:A:182:LEU:HD12	2:B:79:MET:SD	2.59	0.43
3:C:250:ALA:HA	10:C:1769:HOH:O	2.19	0.42
3:C:789[A]:GLU:HB3	3:C:790:PRO:HD3	2.01	0.42
1:A:167:LYS:NZ	10:A:519:HOH:O	2.51	0.42
3:C:751:THR:HA	3:C:756:VAL:HG11	2.00	0.42
2:B:63:ILE:O	2:B:63:ILE:HG22	2.19	0.42
3:C:1021:GLN:CD	3:C:1027:VAL:HG12	2.40	0.42
8:C:1101:LMB:H27	8:C:1101:LMB:H23	1.86	0.42
3:C:284[A]:GLN:NE2	3:C:288:THR:HG21	2.35	0.42
3:C:491:LEU:O	3:C:495:ILE:HG22	2.20	0.42
3:C:755:LYS:HD3	10:C:2119:HOH:O	2.20	0.41
3:C:238:LEU:O	3:C:252:THR:HG21	2.21	0.41
3:C:435:MET:HG3	3:C:511:ALA:HB2	2.03	0.41
3:C:967:TYR:HE1	3:C:991:LEU:HD23	1.86	0.40
3:C:500:TRP:CZ3	3:C:538:LEU:HD11	2.56	0.40

All (3) symmetry-related close contacts are listed below. The label for Atom-2 includes the sym-

metry operator and encoded unit-cell translations to be applied.

Atom-1	Atom-2	Interatomic distance (Å)	Clash overlap (Å)
10:C:2111:HOH:O	10:C:2115:HOH:O[7_465]	1.33	0.87
10:C:2116:HOH:O	10:C:2125:HOH:O[7_465]	1.34	0.86
2:B:66:GLU:OE2	10:C:2000:HOH:O[6_565]	2.13	0.07

## 5.3 Torsion angles [i](#)

### 5.3.1 Protein backbone [i](#)

In the following table, the Percentiles column shows the percent Ramachandran outliers of the chain as a percentile score with respect to all X-ray entries followed by that with respect to entries of similar resolution.

The Analysed column shows the number of residues for which the backbone conformation was analysed, and the total number of residues.

Mol	Chain	Analysed	Favoured	Allowed	Outliers	Percentiles	
1	A	196/216 (91%)	190 (97%)	6 (3%)	0	100	100
2	B	128/140 (91%)	121 (94%)	6 (5%)	1 (1%)	19	9
3	C	1038/1023 (102%)	1024 (99%)	14 (1%)	0	100	100
All	All	1362/1379 (99%)	1335 (98%)	26 (2%)	1 (0%)	51	42

All (1) Ramachandran outliers are listed below:

Mol	Chain	Res	Type
2	B	79	MET

### 5.3.2 Protein sidechains [i](#)

In the following table, the Percentiles column shows the percent sidechain outliers of the chain as a percentile score with respect to all X-ray entries followed by that with respect to entries of similar resolution.

The Analysed column shows the number of residues for which the sidechain conformation was analysed, and the total number of residues.

Mol	Chain	Analysed	Rotameric	Outliers	Percentiles	
1	A	175/185 (95%)	171 (98%)	4 (2%)	50	45
2	B	115/122 (94%)	111 (96%)	4 (4%)	36	27

*Continued on next page...*

*Continued from previous page...*

Mol	Chain	Analysed	Rotameric	Outliers	Percentiles	
3	C	952/932 (102%)	937 (98%)	15 (2%)	62	60
All	All	1242/1239 (100%)	1219 (98%)	23 (2%)	60	53

All (23) residues with a non-rotameric sidechain are listed below:

Mol	Chain	Res	Type
1	A	76[A]	ARG
1	A	76[B]	ARG
1	A	200	ASP
1	A	216	LEU
2	B	63	ILE
2	B	64	HIS
2	B	77	LYS
2	B	79	MET
3	C	35	GLN
3	C	245	SER
3	C	247[A]	ASP
3	C	247[B]	ASP
3	C	291	MET
3	C	495	ILE
3	C	538	LEU
3	C	541	LYS
3	C	607	LYS
3	C	691	LEU
3	C	785	LYS
3	C	883	LYS
3	C	977	GLN
3	C	983	GLN
3	C	1026	VAL

Sometimes sidechains can be flipped to improve hydrogen bonding and reduce clashes. All (5) such sidechains are listed below:

Mol	Chain	Res	Type
1	A	62	ASN
2	B	64	HIS
3	C	203	GLN
3	C	434	ASN
3	C	993	GLN

### 5.3.3 RNA [i](#)

There are no RNA molecules in this entry.

## 5.4 Non-standard residues in protein, DNA, RNA chains [i](#)

There are no non-standard protein/DNA/RNA residues in this entry.

## 5.5 Carbohydrates [i](#)

There are no monosaccharides in this entry.

## 5.6 Ligand geometry [i](#)

Of 12 ligands modelled in this entry, 5 are monoatomic - leaving 7 for Mogul analysis.

In the following table, the Counts columns list the number of bonds (or angles) for which Mogul statistics could be retrieved, the number of bonds (or angles) that are observed in the model and the number of bonds (or angles) that are defined in the Chemical Component Dictionary. The Link column lists molecule types, if any, to which the group is linked. The Z score for a bond length (or angle) is the number of standard deviations the observed value is removed from the expected value. A bond length (or angle) with  $|Z| > 2$  is considered an outlier worth inspection. RMSZ is the root-mean-square of all Z scores of the bond lengths (or angles).

Mol	Type	Chain	Res	Link	Bond lengths			Bond angles		
					Counts	RMSZ	$\# Z  > 2$	Counts	RMSZ	$\# Z  > 2$
6	GOL	A	303	-	5,5,5	0.31	0	5,5,5	0.37	0
6	GOL	C	1102	-	5,5,5	0.43	0	5,5,5	0.51	0
6	GOL	C	1103	-	5,5,5	0.38	0	5,5,5	0.23	0
7	EDO	A	304	-	3,3,3	0.48	0	2,2,2	0.12	0
4	GNP	A	301	5	29,34,34	1.52	4 (13%)	33,54,54	2.05	7 (21%)
8	LMB	C	1101	3	37,39,39	0.98	3 (8%)	43,51,51	1.33	7 (16%)
7	EDO	C	1104	-	3,3,3	0.53	0	2,2,2	0.29	0

In the following table, the Chirals column lists the number of chiral outliers, the number of chiral centers analysed, the number of these observed in the model and the number defined in the Chemical Component Dictionary. Similar counts are reported in the Torsion and Rings columns. '-' means no outliers of that kind were identified.

Mol	Type	Chain	Res	Link	Chirals	Torsions	Rings
6	GOL	A	303	-	-	3/4/4/4	-
6	GOL	C	1102	-	-	1/4/4/4	-

*Continued on next page...*

*Continued from previous page...*

Mol	Type	Chain	Res	Link	Chirals	Torsions	Rings
6	GOL	C	1103	-	-	2/4/4/4	-
7	EDO	A	304	-	-	0/1/1/1	-
4	GNP	A	301	5	-	4/14/38/38	0/3/3/3
8	LMB	C	1101	3	-	4/54/54/54	-
7	EDO	C	1104	-	-	1/1/1/1	-

All (7) bond length outliers are listed below:

Mol	Chain	Res	Type	Atoms	Z	Observed(Å)	Ideal(Å)
4	A	301	GNP	C5-C6	3.85	1.48	1.41
4	A	301	GNP	PB-N3B	3.78	1.73	1.63
4	A	301	GNP	PG-N3B	3.58	1.72	1.63
8	C	1101	LMB	C16-C17	-2.84	1.50	1.53
8	C	1101	LMB	C7-C8	2.64	1.50	1.45
8	C	1101	LMB	O5-C24	-2.21	1.24	1.30
4	A	301	GNP	O4'-C1'	2.19	1.43	1.40

All (14) bond angle outliers are listed below:

Mol	Chain	Res	Type	Atoms	Z	Observed(°)	Ideal(°)
4	A	301	GNP	C2-N1-C6	5.37	123.42	115.96
4	A	301	GNP	C5-C6-N1	-4.65	117.21	123.42
4	A	301	GNP	O1G-PG-N3B	-4.53	105.10	111.77
4	A	301	GNP	C2-N3-C4	4.30	120.12	115.48
4	A	301	GNP	N3-C2-N1	-3.40	122.89	127.21
4	A	301	GNP	C4-C5-C6	-3.03	116.61	121.23
8	C	1101	LMB	C12-C13-C14	-2.94	121.46	125.89
8	C	1101	LMB	C11-C12-C13	-2.91	119.64	125.93
8	C	1101	LMB	C22-C23-C24	-2.54	122.47	126.94
8	C	1101	LMB	C5-C6-C7	-2.52	121.12	125.39
8	C	1101	LMB	O1'-C1-C2	2.21	120.97	114.00
4	A	301	GNP	C4-C5-N7	-2.16	107.06	109.34
8	C	1101	LMB	O1-C1-C2	-2.12	116.38	123.09
8	C	1101	LMB	C10-C11-C12	-2.03	110.59	113.51

There are no chirality outliers.

All (15) torsion outliers are listed below:

Mol	Chain	Res	Type	Atoms
4	A	301	GNP	PG-N3B-PB-O1B

*Continued on next page...*

*Continued from previous page...*

Mol	Chain	Res	Type	Atoms
4	A	301	GNP	PA-O3A-PB-O1B
4	A	301	GNP	PA-O3A-PB-O2B
6	A	303	GOL	C1-C2-C3-O3
6	C	1103	GOL	C1-C2-C3-O3
8	C	1101	LMB	C27-C26-C8-C9
6	A	303	GOL	O2-C2-C3-O3
6	C	1103	GOL	O2-C2-C3-O3
7	C	1104	EDO	O1-C1-C2-O2
6	A	303	GOL	O1-C1-C2-O2
8	C	1101	LMB	C2-C3-C4-C25
8	C	1101	LMB	C1-C2-C3-C4
6	C	1102	GOL	O2-C2-C3-O3
4	A	301	GNP	PG-N3B-PB-O3A
8	C	1101	LMB	O1'-C1-C2-C3

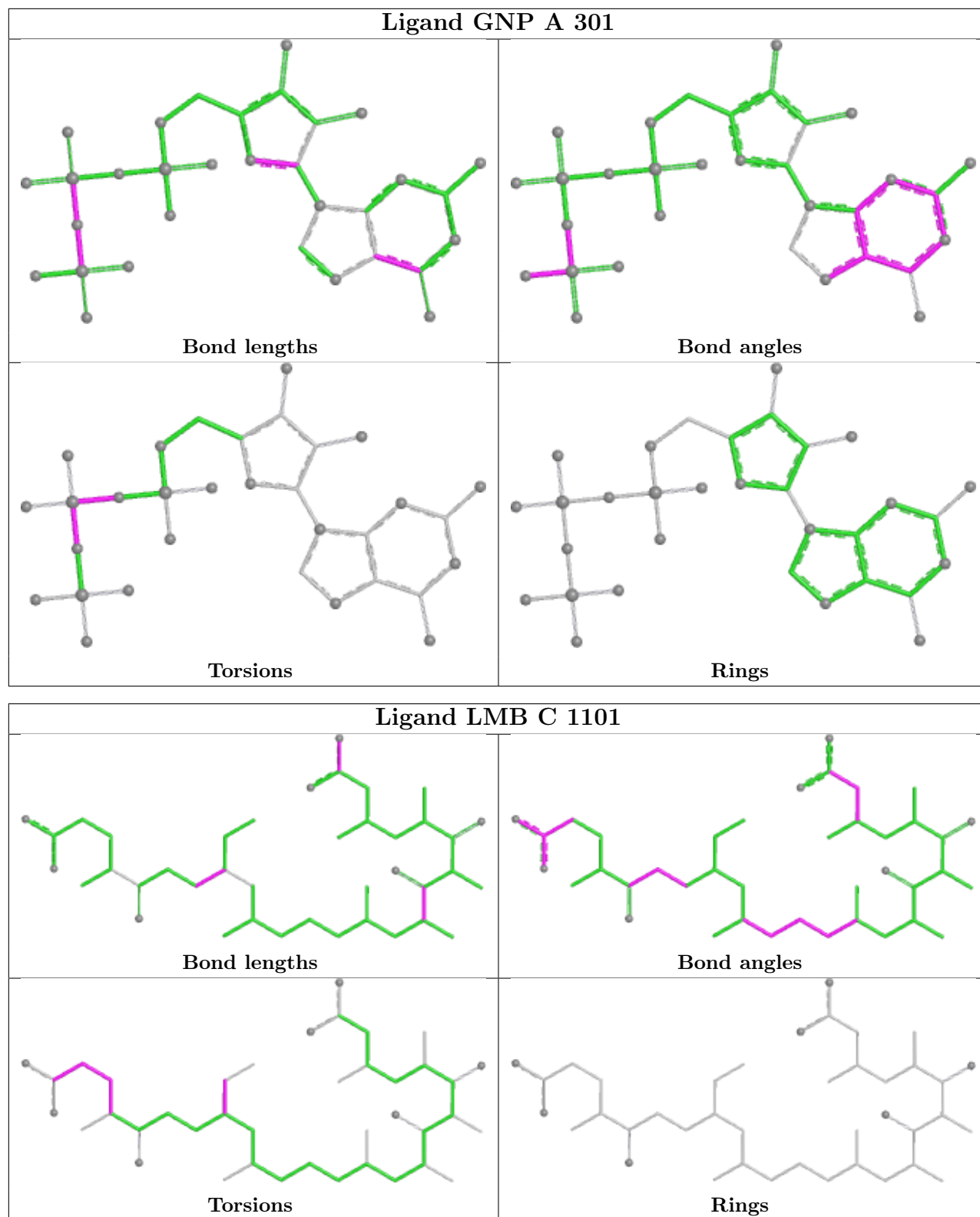
There are no ring outliers.

2 monomers are involved in 3 short contacts:

Mol	Chain	Res	Type	Clashes	Symm-Clashes
6	A	303	GOL	1	0
8	C	1101	LMB	2	0

The following is a two-dimensional graphical depiction of Mogul quality analysis of bond lengths, bond angles, torsion angles, and ring geometry for all instances of the Ligand of Interest. In addition, ligands with molecular weight > 250 and outliers as shown on the validation Tables will also be included. For torsion angles, if less than 5% of the Mogul distribution of torsion angles is within 10 degrees of the torsion angle in question, then that torsion angle is considered an outlier. Any bond that is central to one or more torsion angles identified as an outlier by Mogul will be highlighted in the graph. For rings, the root-mean-square deviation (RMSD) between the ring in question and similar rings identified by Mogul is calculated over all ring torsion angles. If the average RMSD is greater than 60 degrees and the minimal RMSD between the ring in question and any Mogul-identified rings is also greater than 60 degrees, then that ring is considered an outlier. The outliers are highlighted in purple. The color gray indicates Mogul did not find sufficient equivalents in the CSD to analyse the geometry.





## 5.7 Other polymers ⓘ

There are no such residues in this entry.

## 5.8 Polymer linkage issues ⓘ

There are no chain breaks in this entry.

## 6 Fit of model and data

### 6.1 Protein, DNA and RNA chains

In the following table, the column labelled ‘#RSRZ > 2’ contains the number (and percentage) of RSRZ outliers, followed by percent RSRZ outliers for the chain as percentile scores relative to all X-ray entries and entries of similar resolution. The OWAB column contains the minimum, median, 95<sup>th</sup> percentile and maximum values of the occupancy-weighted average B-factor per residue. The column labelled ‘Q < 0.9’ lists the number of (and percentage) of residues with an average occupancy less than 0.9.

Mol	Chain	Analysed	<RSRZ>	#RSRZ>2	OWAB(Å <sup>2</sup> )	Q<0.9
1	A	196/216 (90%)	0.05	8 (4%) 37 40	16, 24, 44, 78	0
2	B	131/140 (93%)	0.55	16 (12%) 4 4	20, 33, 56, 72	0
3	C	1012/1023 (98%)	-0.13	24 (2%) 59 62	14, 26, 48, 78	0
All	All	1339/1379 (97%)	-0.04	48 (3%) 42 45	14, 26, 49, 78	0

All (48) RSRZ outliers are listed below:

Mol	Chain	Res	Type	RSRZ
2	B	64	HIS	7.6
2	B	63	ILE	6.0
3	C	979	ALA	5.5
3	C	270	LEU	5.4
2	B	79	MET	4.9
1	A	182	LEU	4.8
2	B	69	VAL	4.8
2	B	67	PRO	4.6
3	C	978	GLU	4.4
3	C	264	ILE	4.3
2	B	68	VAL	4.2
3	C	205	SER	4.1
3	C	204	GLY	4.1
2	B	65	PHE	3.8
3	C	684	THR	3.7
1	A	109	VAL	3.7
3	C	977	GLN	3.5
2	B	78	THR	3.4
3	C	685	ALA	3.4
2	B	66	GLU	3.3
3	C	226	TYR	3.1
2	B	100	ALA	3.1
3	C	967	TYR	3.0

*Continued on next page...*

*Continued from previous page...*

Mol	Chain	Res	Type	RSRZ
2	B	168[A]	GLU	3.0
1	A	199	HIS	3.0
3	C	984	GLY	2.8
1	A	108	LEU	2.8
3	C	206	SER	2.8
2	B	98	LYS	2.7
2	B	161	THR	2.7
3	C	983	GLN	2.7
3	C	616	ARG	2.7
3	C	-1	GLY	2.5
3	C	262	LEU	2.4
2	B	169	ALA	2.4
3	C	972	SER	2.4
1	A	112	CYS	2.3
2	B	199	LYS	2.3
3	C	539	CYS	2.3
2	B	162	ALA	2.2
1	A	111	VAL	2.2
1	A	179	MET	2.2
3	C	1052	ALA	2.1
3	C	449	GLY	2.1
3	C	57	PHE	2.1
1	A	9	VAL	2.0
3	C	455	PHE	2.0
3	C	266	GLN	2.0

## 6.2 Non-standard residues in protein, DNA, RNA chains ⓘ

There are no non-standard protein/DNA/RNA residues in this entry.

## 6.3 Carbohydrates ⓘ

There are no monosaccharides in this entry.

## 6.4 Ligands ⓘ

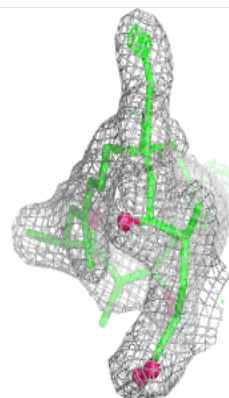
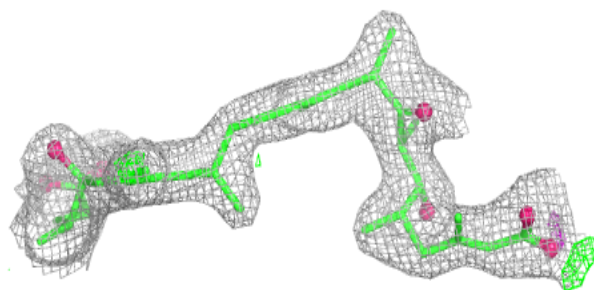
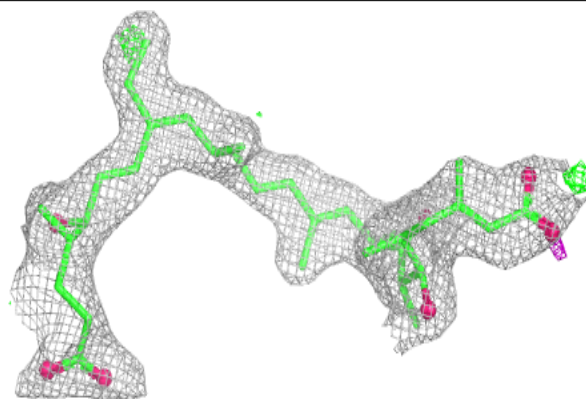
In the following table, the Atoms column lists the number of modelled atoms in the group and the number defined in the chemical component dictionary. The B-factors column lists the minimum, median, 95<sup>th</sup> percentile and maximum values of B factors of atoms in the group. The column labelled 'Q< 0.9' lists the number of atoms with occupancy less than 0.9.

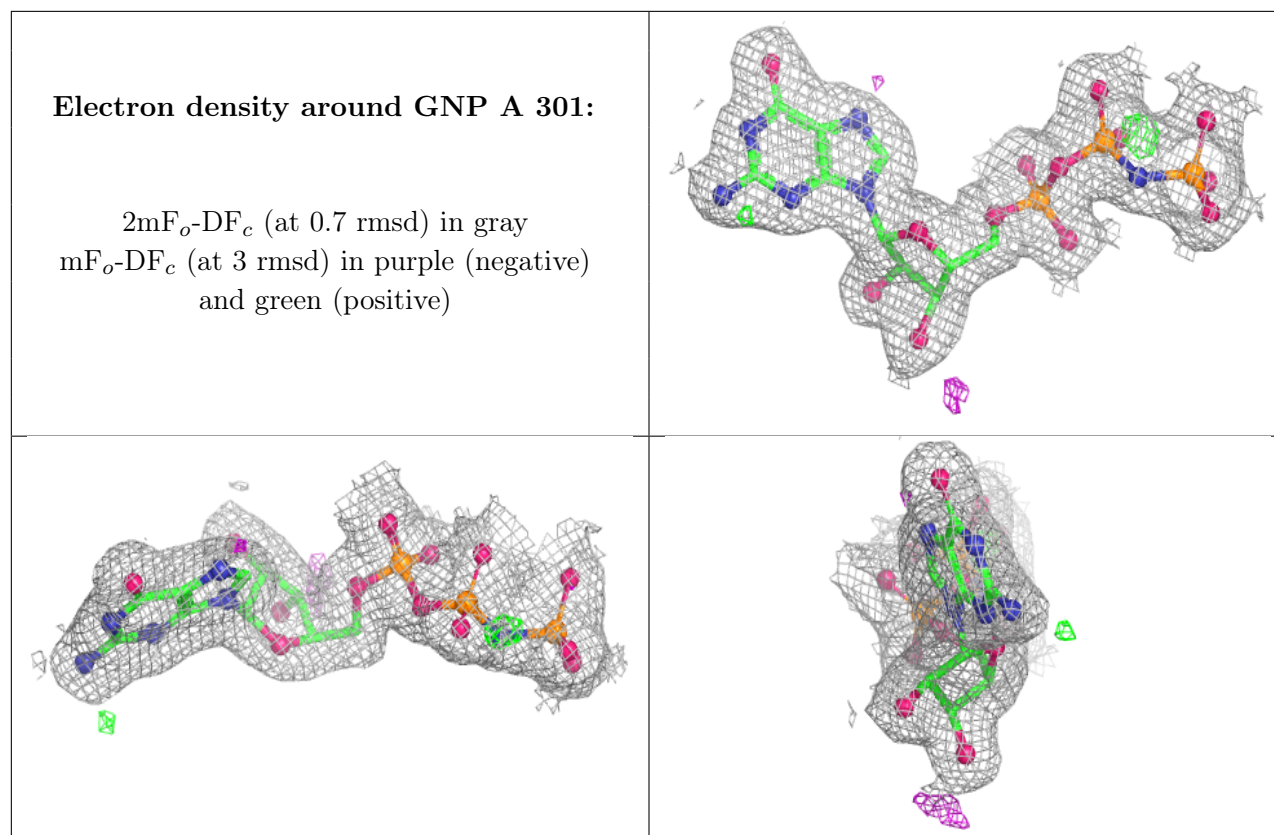
Mol	Type	Chain	Res	Atoms	RSCC	RSR	B-factors( $\text{\AA}^2$ )	Q<0.9
6	GOL	A	303	6/6	0.64	0.16	76,78,78,78	0
5	MG	C	1108	1/1	0.77	0.12	81,81,81,81	0
6	GOL	C	1102	6/6	0.83	0.27	46,53,65,69	0
6	GOL	C	1103	6/6	0.85	0.15	49,50,53,55	0
8	LMB	C	1101	40/40	0.89	0.16	27,40,52,55	0
7	EDO	C	1104	4/4	0.90	0.11	42,49,50,50	0
7	EDO	A	304	4/4	0.90	0.31	51,53,55,56	0
9	CL	C	1105	1/1	0.91	0.15	62,62,62,62	0
9	CL	C	1106	1/1	0.94	0.12	58,58,58,58	0
9	CL	C	1107	1/1	0.95	0.12	72,72,72,72	0
5	MG	A	302	1/1	0.97	0.07	20,20,20,20	0
4	GNP	A	301	32/32	0.99	0.08	17,20,21,22	0

The following is a graphical depiction of the model fit to experimental electron density of all instances of the Ligand of Interest. In addition, ligands with molecular weight > 250 and outliers as shown on the geometry validation Tables will also be included. Each fit is shown from different orientation to approximate a three-dimensional view.

**Electron density around LMB C 1101:**

2mF<sub>o</sub>-DF<sub>c</sub> (at 0.7 rmsd) in gray  
mF<sub>o</sub>-DF<sub>c</sub> (at 3 rmsd) in purple (negative)  
and green (positive)





## 6.5 Other polymers [i](#)

There are no such residues in this entry.