



wwPDB X-ray Structure Validation Summary Report ⓘ

Jun 15, 2024 – 11:21 PM EDT

PDB ID : 2HHJ
Title : Human bisphosphoglycerate mutase complexed with 2,3-bisphosphoglycerate
(15 days)
Authors : Wang, Y.; Gong, W.
Deposited on : 2006-06-28
Resolution : 1.50 Å(reported)

This is a wwPDB X-ray Structure Validation Summary Report for a publicly released PDB entry.

We welcome your comments at validation@mail.wwpdb.org

A user guide is available at

<https://www.wwpdb.org/validation/2017/XrayValidationReportHelp>

with specific help available everywhere you see the ⓘ symbol.

The types of validation reports are described at

<http://www.wwpdb.org/validation/2017/FAQs#types>.

The following versions of software and data (see [references ⓘ](#)) were used in the production of this report:

MolProbity	:	4.02b-467
Mogul	:	2022.3.0, CSD as543be (2022)
Xtriage (Phenix)	:	1.20.1
EDS	:	2.37.1
buster-report	:	1.1.7 (2018)
Percentile statistics	:	20191225.v01 (using entries in the PDB archive December 25th 2019)
Refmac	:	5.8.0158
CCP4	:	7.0.044 (Gargrove)
Ideal geometry (proteins)	:	Engh & Huber (2001)
Ideal geometry (DNA, RNA)	:	Parkinson et al. (1996)
Validation Pipeline (wwPDB-VP)	:	2.37.1

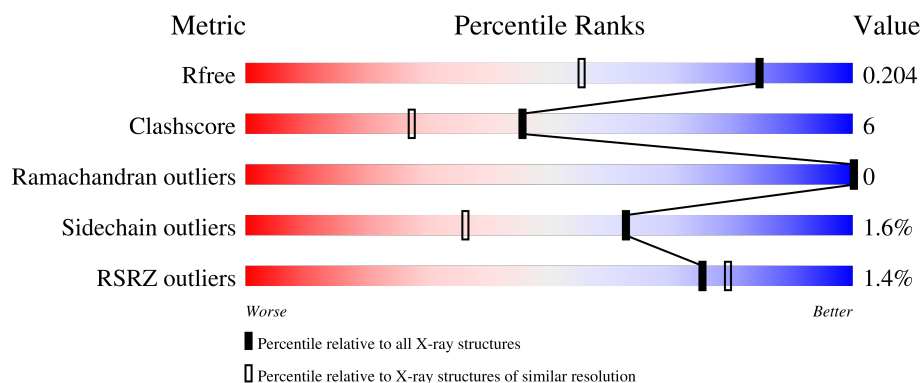
1 Overall quality at a glance

The following experimental techniques were used to determine the structure:

X-RAY DIFFRACTION

The reported resolution of this entry is 1.50 Å.

Percentile scores (ranging between 0-100) for global validation metrics of the entry are shown in the following graphic. The table shows the number of entries on which the scores are based.



Metric	Whole archive (#Entries)	Similar resolution (#Entries, resolution range(Å))
R_{free}	130704	2936 (1.50-1.50)
Clashscore	141614	3144 (1.50-1.50)
Ramachandran outliers	138981	3066 (1.50-1.50)
Sidechain outliers	138945	3064 (1.50-1.50)
RSRZ outliers	127900	2884 (1.50-1.50)

The table below summarises the geometric issues observed across the polymeric chains and their fit to the electron density. The red, orange, yellow and green segments of the lower bar indicate the fraction of residues that contain outliers for ≥ 3 , 2, 1 and 0 types of geometric quality criteria respectively. A grey segment represents the fraction of residues that are not modelled. The numeric value for each fraction is indicated below the corresponding segment, with a dot representing fractions $\leq 5\%$. The upper red bar (where present) indicates the fraction of residues that have poor fit to the electron density. The numeric value is given above the bar.

Mol	Chain	Length	Quality of chain
1	A	267	 85% 10% • 5%
1	B	267	 2% 80% 15% • 5%

2 Entry composition

There are 5 unique types of molecules in this entry. The entry contains 4992 atoms, of which 0 are hydrogens and 0 are deuteriums.

In the tables below, the ZeroOcc column contains the number of atoms modelled with zero occupancy, the AltConf column contains the number of residues with at least one atom in alternate conformation and the Trace column contains the number of residues modelled with at most 2 atoms.

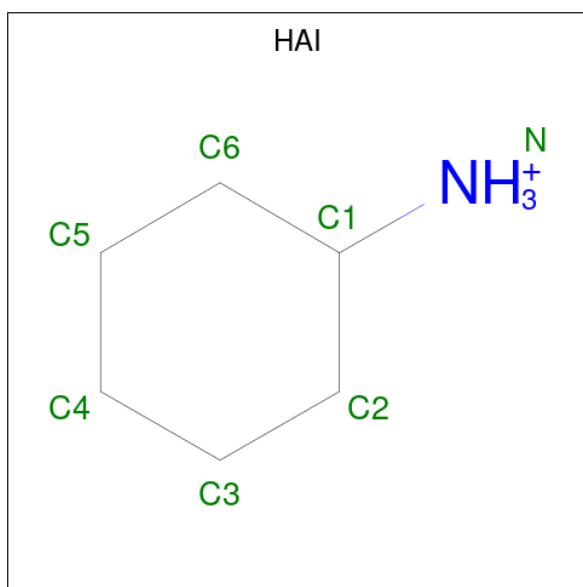
- Molecule 1 is a protein called Bisphosphoglycerate mutase.

Mol	Chain	Residues	Atoms						ZeroOcc	AltConf	Trace
1	A	255	Total	C	N	O	P	S	4	4	0
			2086	1317	372	389	1	7			
1	B	254	Total	C	N	O	P	S	0	7	0
			2087	1323	369	385	1	9			

There are 16 discrepancies between the modelled and reference sequences:

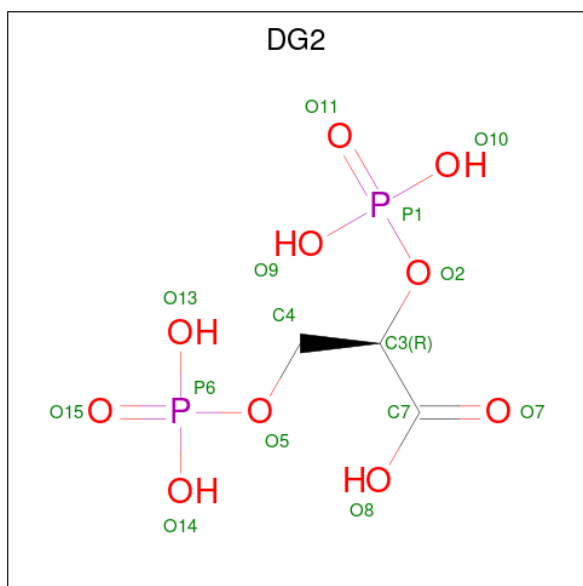
Chain	Residue	Modelled	Actual	Comment	Reference
A	260	LEU	-	EXPRESSION TAG	UNP P07738
A	261	GLU	-	EXPRESSION TAG	UNP P07738
A	262	HIS	-	EXPRESSION TAG	UNP P07738
A	263	HIS	-	EXPRESSION TAG	UNP P07738
A	264	HIS	-	EXPRESSION TAG	UNP P07738
A	265	HIS	-	EXPRESSION TAG	UNP P07738
A	266	HIS	-	EXPRESSION TAG	UNP P07738
A	267	HIS	-	EXPRESSION TAG	UNP P07738
B	260	LEU	-	EXPRESSION TAG	UNP P07738
B	261	GLU	-	EXPRESSION TAG	UNP P07738
B	262	HIS	-	EXPRESSION TAG	UNP P07738
B	263	HIS	-	EXPRESSION TAG	UNP P07738
B	264	HIS	-	EXPRESSION TAG	UNP P07738
B	265	HIS	-	EXPRESSION TAG	UNP P07738
B	266	HIS	-	EXPRESSION TAG	UNP P07738
B	267	HIS	-	EXPRESSION TAG	UNP P07738

- Molecule 2 is CYCLOHEXYLAMMONIUM ION (three-letter code: HAI) (formula: C₆H₁₄N).



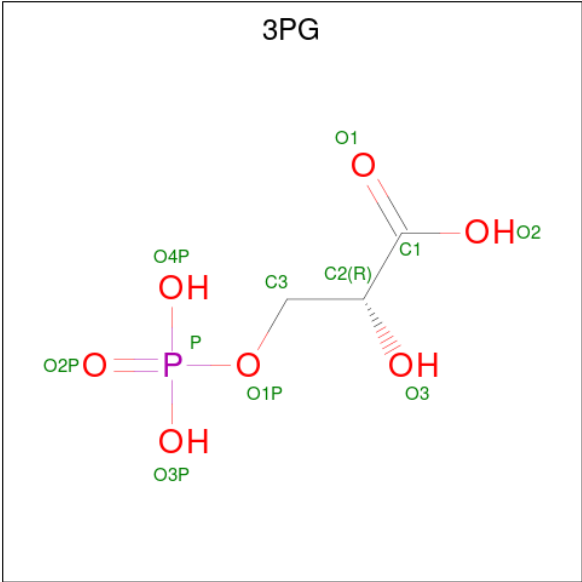
Mol	Chain	Residues	Atoms			ZeroOcc	AltConf
2	A	1	Total	C	N	0	0
			7	6	1		

- Molecule 3 is (2R)-2,3-diphosphoglyceric acid (three-letter code: DG2) (formula: $C_3H_8O_{10}P_2$).



Mol	Chain	Residues	Atoms				ZeroOcc	AltConf
3	A	1	Total	C	O	P	0	1
			15	3	10	2		
3	B	1	Total	C	O	P	0	1
			15	3	10	2		

- Molecule 4 is 3-PHOSPHOGLYCERIC ACID (three-letter code: 3PG) (formula: $C_3H_7O_7P$).



Mol	Chain	Residues	Atoms				ZeroOcc	AltConf
4	A	1	Total	C	O	P	0	1
			11	3	7	1		
4	B	1	Total	C	O	P	0	1
			11	3	7	1		

- Molecule 5 is water.

Mol	Chain	Residues	Atoms		ZeroOcc	AltConf
5	A	405	Total	O	0	0
			405	405		
5	B	355	Total	O	0	0
			355	355		

- Molecule 1: Bisphosphoglycerate mutase



4 Data and refinement statistics

Property	Value	Source
Space group	P 21 21 21	Depositor
Cell constants a, b, c, α , β , γ	48.69Å 71.56Å 159.19Å 90.00° 90.00° 90.00°	Depositor
Resolution (Å)	28.83 – 1.50 28.83 – 1.50	Depositor EDS
% Data completeness (in resolution range)	93.0 (28.83-1.50) 92.9 (28.83-1.50)	Depositor EDS
R_{merge}	0.07	Depositor
R_{sym}	(Not available)	Depositor
$\langle I/\sigma(I) \rangle$ ¹	2.69 (at 1.50Å)	Xtriage
Refinement program	CNS 1.0	Depositor
R, R_{free}	0.182 , 0.209 0.177 , 0.204	Depositor DCC
R_{free} test set	8801 reflections (9.99%)	wwPDB-VP
Wilson B-factor (Å ²)	12.9	Xtriage
Anisotropy	0.521	Xtriage
Bulk solvent k_{sol} (e/Å ³), B_{sol} (Å ²)	0.32 , 45.0	EDS
L-test for twinning ²	$\langle L \rangle = 0.50$, $\langle L^2 \rangle = 0.33$	Xtriage
Estimated twinning fraction	No twinning to report.	Xtriage
F_o, F_c correlation	0.96	EDS
Total number of atoms	4992	wwPDB-VP
Average B, all atoms (Å ²)	18.0	wwPDB-VP

Xtriage's analysis on translational NCS is as follows: *The largest off-origin peak in the Patterson function is 5.15% of the height of the origin peak. No significant pseudotranslation is detected.*

¹Intensities estimated from amplitudes.

²Theoretical values of $\langle |L| \rangle$, $\langle L^2 \rangle$ for acentric reflections are 0.5, 0.333 respectively for untwinned datasets, and 0.375, 0.2 for perfectly twinned datasets.

5 Model quality

5.1 Standard geometry

Bond lengths and bond angles in the following residue types are not validated in this section: HAI, 3PG, DG2, NEP

The Z score for a bond length (or angle) is the number of standard deviations the observed value is removed from the expected value. A bond length (or angle) with $|Z| > 5$ is considered an outlier worth inspection. RMSZ is the root-mean-square of all Z scores of the bond lengths (or angles).

Mol	Chain	Bond lengths		Bond angles	
		RMSZ	$\# Z > 5$	RMSZ	$\# Z > 5$
1	A	0.28	0/2128	0.57	0/2881
1	B	0.27	0/2151	0.56	0/2911
All	All	0.28	0/4279	0.57	0/5792

There are no bond length outliers.

There are no bond angle outliers.

There are no chirality outliers.

There are no planarity outliers.

5.2 Too-close contacts

In the following table, the Non-H and H(model) columns list the number of non-hydrogen atoms and hydrogen atoms in the chain respectively. The H(added) column lists the number of hydrogen atoms added and optimized by MolProbity. The Clashes column lists the number of clashes within the asymmetric unit, whereas Symm-Clashes lists symmetry-related clashes.

Mol	Chain	Non-H	H(model)	H(added)	Clashes	Symm-Clashes
1	A	2086	0	2046	18	1
1	B	2087	0	2057	36	0
2	A	7	0	14	1	0
3	A	15	0	4	0	0
3	B	15	0	4	0	0
4	A	11	0	4	0	0
4	B	11	0	4	0	0
5	A	405	0	0	4	1
5	B	355	0	0	4	0
All	All	4992	0	4133	54	1

The all-atom clashscore is defined as the number of clashes found per 1000 atoms (including

hydrogen atoms). The all-atom clashscore for this structure is 6.

The worst 5 of 54 close contacts within the same asymmetric unit are listed below, sorted by their clash magnitude.

Atom-1	Atom-2	Interatomic distance (Å)	Clash overlap (Å)
1:B:41[B]:CYS:SG	1:B:217:PRO:HG3	1.82	1.19
1:B:103[B]:MET:SD	1:B:115:TRP:CZ3	2.86	0.69
1:B:114[B]:LEU:HD21	1:B:121:VAL:HG21	1.72	0.69
1:B:114[A]:LEU:HD12	1:B:118:SER:HB2	1.75	0.68
1:B:41[B]:CYS:HG	1:B:217:PRO:HG3	1.57	0.67

All (1) symmetry-related close contacts are listed below. The label for Atom-2 includes the symmetry operator and encoded unit-cell translations to be applied.

Atom-1	Atom-2	Interatomic distance (Å)	Clash overlap (Å)
1:A:49[A]:ASN:ND2	5:A:3543:HOH:O[4_566]	1.59	0.61

5.3 Torsion angles [i](#)

5.3.1 Protein backbone [i](#)

In the following table, the Percentiles column shows the percent Ramachandran outliers of the chain as a percentile score with respect to all X-ray entries followed by that with respect to entries of similar resolution.

The Analysed column shows the number of residues for which the backbone conformation was analysed, and the total number of residues.

Mol	Chain	Analysed	Favoured	Allowed	Outliers	Percentiles	
1	A	255/267 (96%)	253 (99%)	2 (1%)	0	100	100
1	B	258/267 (97%)	254 (98%)	4 (2%)	0	100	100
All	All	513/534 (96%)	507 (99%)	6 (1%)	0	100	100

There are no Ramachandran outliers to report.

5.3.2 Protein sidechains [i](#)

In the following table, the Percentiles column shows the percent sidechain outliers of the chain as a percentile score with respect to all X-ray entries followed by that with respect to entries of similar resolution.

The Analysed column shows the number of residues for which the sidechain conformation was analysed, and the total number of residues.

Mol	Chain	Analysed	Rotameric	Outliers	Percentiles	
1	A	226/237 (95%)	222 (98%)	4 (2%)	59	30
1	B	229/237 (97%)	226 (99%)	3 (1%)	69	44
All	All	455/474 (96%)	448 (98%)	7 (2%)	62	39

5 of 7 residues with a non-rotameric sidechain are listed below:

Mol	Chain	Res	Type
1	A	227	ARG
1	B	6	LEU
1	B	61	ASN
1	B	54	LEU
1	A	224	GLU

Sometimes sidechains can be flipped to improve hydrogen bonding and reduce clashes. 5 of 8 such sidechains are listed below:

Mol	Chain	Res	Type
1	B	170	ASN
1	B	151	GLN
1	B	102	GLN
1	B	61	ASN
1	B	107	HIS

5.3.3 RNA ⓘ

There are no RNA molecules in this entry.

5.4 Non-standard residues in protein, DNA, RNA chains ⓘ

2 non-standard protein/DNA/RNA residues are modelled in this entry.

There are no bond length outliers.

There are no bond angle outliers.

There are no chirality outliers.

There are no torsion outliers.

There are no ring outliers.

No monomer is involved in short contacts.

5.5 Carbohydrates [i](#)

There are no monosaccharides in this entry.

5.6 Ligand geometry [i](#)

5 ligands are modelled in this entry.

In the following table, the Counts columns list the number of bonds (or angles) for which Mogul statistics could be retrieved, the number of bonds (or angles) that are observed in the model and the number of bonds (or angles) that are defined in the Chemical Component Dictionary. The Link column lists molecule types, if any, to which the group is linked. The Z score for a bond length (or angle) is the number of standard deviations the observed value is removed from the expected value. A bond length (or angle) with $|Z| > 2$ is considered an outlier worth inspection. RMSZ is the root-mean-square of all Z scores of the bond lengths (or angles).

Mol	Type	Chain	Res	Link	Bond lengths			Bond angles		
					Counts	RMSZ	# Z > 2	Counts	RMSZ	# Z > 2
3	DG2	B	2200[A]	-	13,14,14	1.59	1 (7%)	18,21,21	1.11	2 (11%)
4	3PG	A	3200[B]	-	9,10,10	3.54	5 (55%)	11,14,14	2.39	2 (18%)
4	3PG	B	3201[B]	-	9,10,10	3.51	5 (55%)	11,14,14	2.47	3 (27%)
2	HAI	A	2000	-	7,7,7	1.29	0	8,8,8	0.66	0
3	DG2	A	2201[A]	-	13,14,14	1.60	1 (7%)	18,21,21	1.06	1 (5%)

In the following table, the Chirals column lists the number of chiral outliers, the number of chiral centers analysed, the number of these observed in the model and the number defined in the Chemical Component Dictionary. Similar counts are reported in the Torsion and Rings columns. '-' means no outliers of that kind were identified.

Mol	Type	Chain	Res	Link	Chirals	Torsions	Rings
3	DG2	B	2200[A]	-	-	1/15/15/15	-
4	3PG	A	3200[B]	-	-	4/10/10/10	-
4	3PG	B	3201[B]	-	-	2/10/10/10	-
2	HAI	A	2000	-	-	-	0/1/1/1
3	DG2	A	2201[A]	-	-	1/15/15/15	-

The worst 5 of 12 bond length outliers are listed below:

Mol	Chain	Res	Type	Atoms	Z	Observed(Å)	Ideal(Å)
4	A	3200[B]	3PG	P-O2P	5.96	1.69	1.50
4	B	3201[B]	3PG	P-O2P	5.93	1.68	1.50
4	A	3200[B]	3PG	O1-C1	4.90	1.36	1.22
4	B	3201[B]	3PG	O1-C1	4.80	1.36	1.22

Continued on next page...

Continued from previous page...

Mol	Chain	Res	Type	Atoms	Z	Observed(Å)	Ideal(Å)
4	A	3200[B]	3PG	P-O4P	4.08	1.70	1.54

The worst 5 of 8 bond angle outliers are listed below:

Mol	Chain	Res	Type	Atoms	Z	Observed(°)	Ideal(°)
4	B	3201[B]	3PG	O2-C1-C2	6.39	126.26	112.74
4	A	3200[B]	3PG	O2-C1-C2	5.94	125.30	112.74
4	A	3200[B]	3PG	O2-C1-O1	-4.15	114.67	124.08
4	B	3201[B]	3PG	O2-C1-O1	-3.88	115.27	124.08
3	B	2200[A]	DG2	O7-C7-C3	-2.67	117.09	122.85

There are no chirality outliers.

5 of 8 torsion outliers are listed below:

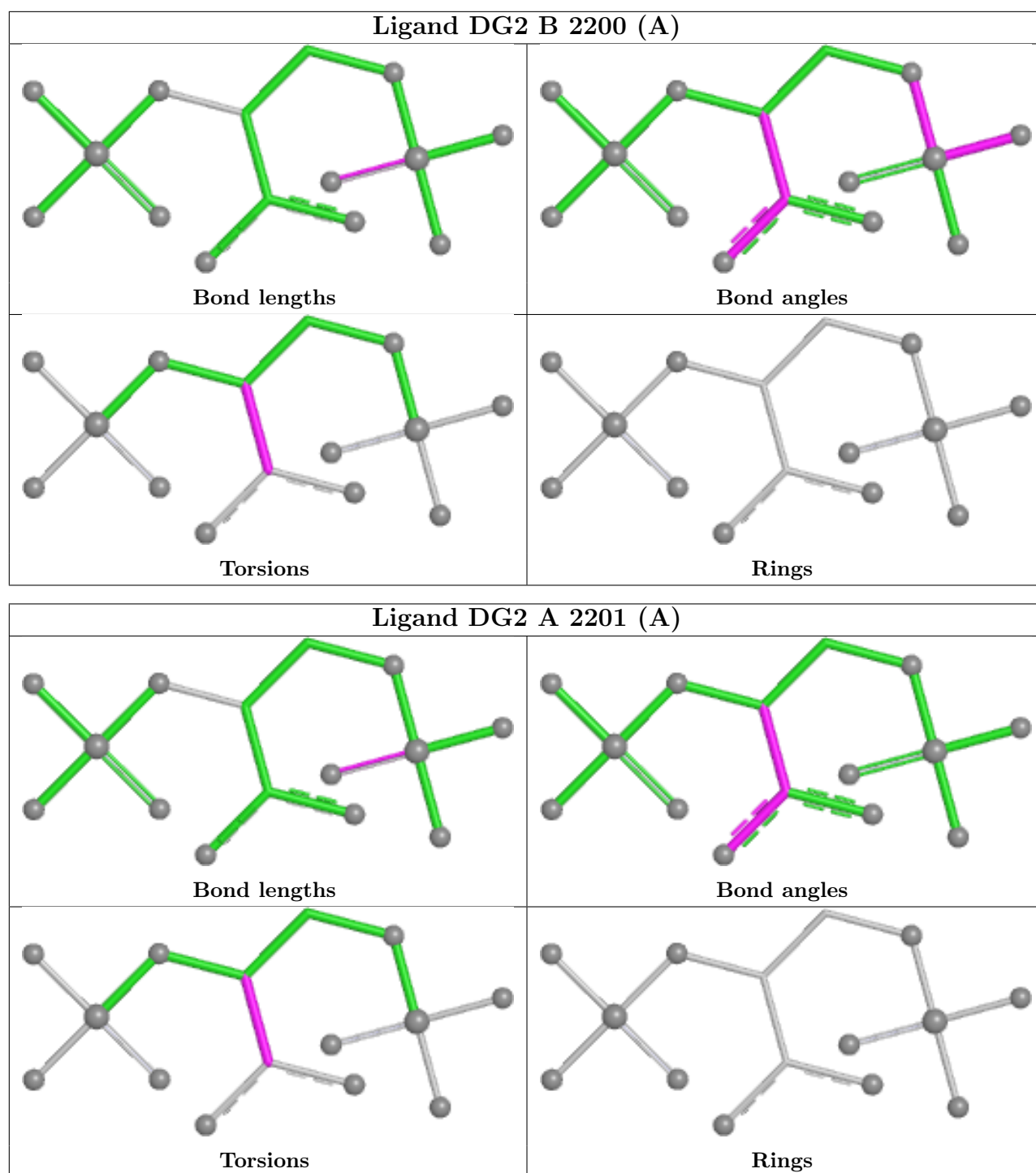
Mol	Chain	Res	Type	Atoms
4	A	3200[B]	3PG	O1-C1-C2-O3
4	A	3200[B]	3PG	O2-C1-C2-O3
4	B	3201[B]	3PG	O1-C1-C2-O3
4	B	3201[B]	3PG	O2-C1-C2-O3
4	A	3200[B]	3PG	O1-C1-C2-C3

There are no ring outliers.

1 monomer is involved in 1 short contact:

Mol	Chain	Res	Type	Clashes	Symm-Clashes
2	A	2000	HAI	1	0

The following is a two-dimensional graphical depiction of Mogul quality analysis of bond lengths, bond angles, torsion angles, and ring geometry for all instances of the Ligand of Interest. In addition, ligands with molecular weight > 250 and outliers as shown on the validation Tables will also be included. For torsion angles, if less than 5% of the Mogul distribution of torsion angles is within 10 degrees of the torsion angle in question, then that torsion angle is considered an outlier. Any bond that is central to one or more torsion angles identified as an outlier by Mogul will be highlighted in the graph. For rings, the root-mean-square deviation (RMSD) between the ring in question and similar rings identified by Mogul is calculated over all ring torsion angles. If the average RMSD is greater than 60 degrees and the minimal RMSD between the ring in question and any Mogul-identified rings is also greater than 60 degrees, then that ring is considered an outlier. The outliers are highlighted in purple. The color gray indicates Mogul did not find sufficient equivalents in the CSD to analyse the geometry.



5.7 Other polymers [i](#)

There are no such residues in this entry.

5.8 Polymer linkage issues [i](#)

There are no chain breaks in this entry.

6 Fit of model and data [i](#)

6.1 Protein, DNA and RNA chains [i](#)

In the following table, the column labelled ‘#RSRZ > 2’ contains the number (and percentage) of RSRZ outliers, followed by percent RSRZ outliers for the chain as percentile scores relative to all X-ray entries and entries of similar resolution. The OWAB column contains the minimum, median, 95th percentile and maximum values of the occupancy-weighted average B-factor per residue. The column labelled ‘Q < 0.9’ lists the number of (and percentage) of residues with an average occupancy less than 0.9.

Mol	Chain	Analysed	<RSRZ>	#RSRZ>2	OWAB(Å ²)	Q<0.9
1	A	254/267 (95%)	-0.22	1 (0%) 92 94	8, 13, 24, 38	1 (0%)
1	B	253/267 (94%)	0.02	6 (2%) 59 63	9, 16, 28, 40	0
All	All	507/534 (94%)	-0.10	7 (1%) 75 79	8, 14, 27, 40	1 (0%)

The worst 5 of 7 RSRZ outliers are listed below:

Mol	Chain	Res	Type	RSRZ
1	B	254	VAL	4.3
1	B	255	LYS	3.8
1	B	150	ASP	2.8
1	B	138	ASN	2.4
1	B	229	VAL	2.3

6.2 Non-standard residues in protein, DNA, RNA chains [i](#)

In the following table, the Atoms column lists the number of modelled atoms in the group and the number defined in the chemical component dictionary. The B-factors column lists the minimum, median, 95th percentile and maximum values of B factors of atoms in the group. The column labelled ‘Q < 0.9’ lists the number of atoms with occupancy less than 0.9.

Mol	Type	Chain	Res	Atoms	RSCC	RSR	B-factors(Å ²)	Q<0.9
1	NEP	B	11[B]	14/15	0.96	0.12	10,11,13,13	4
1	NEP	A	11[B]	14/15	0.97	0.07	8,10,12,12	4

6.3 Carbohydrates [i](#)

There are no monosaccharides in this entry.

6.4 Ligands ⓘ

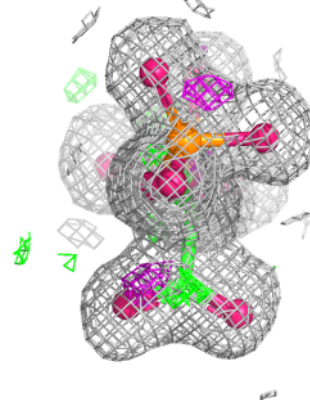
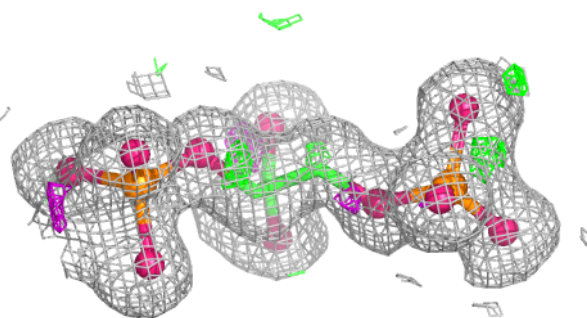
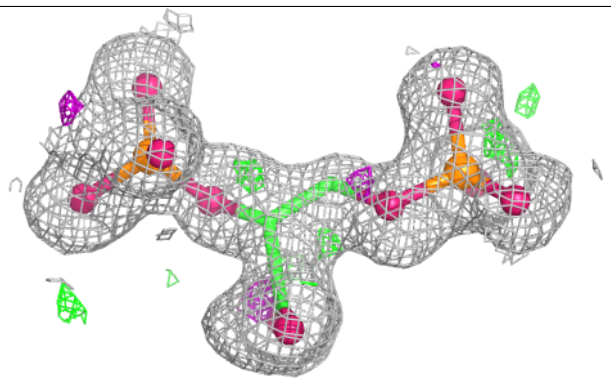
In the following table, the Atoms column lists the number of modelled atoms in the group and the number defined in the chemical component dictionary. The B-factors column lists the minimum, median, 95th percentile and maximum values of B factors of atoms in the group. The column labelled 'Q<0.9' lists the number of atoms with occupancy less than 0.9.

Mol	Type	Chain	Res	Atoms	RSCC	RSR	B-factors(Å ²)	Q<0.9
2	HAI	A	2000	7/7	0.82	0.13	38,38,38,38	0
3	DG2	A	2201[A]	15/15	0.97	0.10	8,11,16,17	15
3	DG2	B	2200[A]	15/15	0.97	0.11	12,14,16,17	15
4	3PG	A	3200[B]	11/11	0.97	0.11	9,11,14,14	11
4	3PG	B	3201[B]	11/11	0.97	0.11	11,13,14,15	11

The following is a graphical depiction of the model fit to experimental electron density of all instances of the Ligand of Interest. In addition, ligands with molecular weight > 250 and outliers as shown on the geometry validation Tables will also be included. Each fit is shown from different orientation to approximate a three-dimensional view.

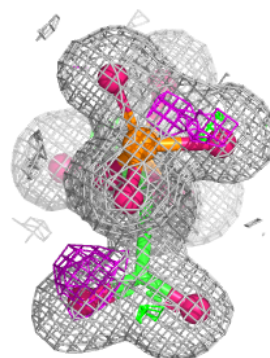
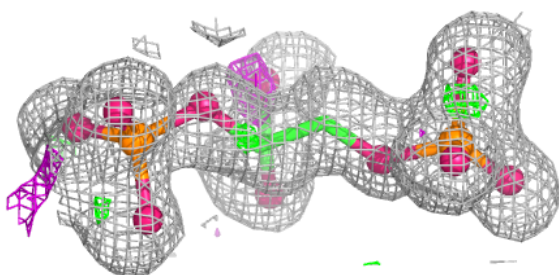
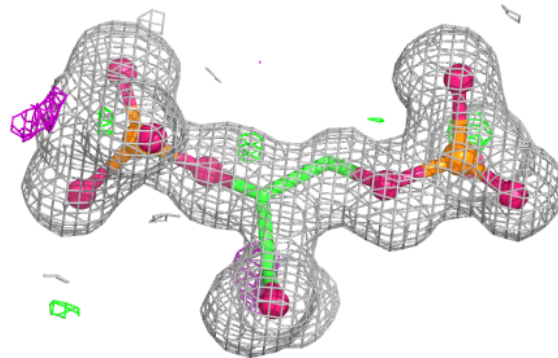
Electron density around DG2 A 2201 (A):

2mF_o-DF_c (at 0.7 rmsd) in gray
mF_o-DF_c (at 3 rmsd) in purple (negative)
and green (positive)



Electron density around DG2 B 2200 (A):

$2mF_o-DF_c$ (at 0.7 rmsd) in gray
 mF_o-DF_c (at 3 rmsd) in purple (negative)
and green (positive)



6.5 Other polymers [i](#)

There are no such residues in this entry.