



# Full wwPDB X-ray Structure Validation Report ⓘ

Jun 17, 2024 – 10:39 AM EDT

PDB ID : 3JTU  
Title : Crystal structure of macrophage migration inhibitory factor (mif) with hydroxyquinoline inhibitor 708 at 1.86a resolution  
Authors : Mclean, L.; Zhang, Y.  
Deposited on : 2009-09-14  
Resolution : 1.86 Å(reported)

This is a Full wwPDB X-ray Structure Validation Report for a publicly released PDB entry.

We welcome your comments at [validation@mail.wwpdb.org](mailto:validation@mail.wwpdb.org)

A user guide is available at

<https://www.wwpdb.org/validation/2017/XrayValidationReportHelp>

with specific help available everywhere you see the ⓘ symbol.

The types of validation reports are described at

<http://www.wwpdb.org/validation/2017/FAQs#types>.

---

The following versions of software and data (see [references ⓘ](#)) were used in the production of this report:

MolProbity	:	4.02b-467
Mogul	:	2022.3.0, CSD as543be (2022)
Xtriage (Phenix)	:	1.20.1
EDS	:	2.37.1
Percentile statistics	:	20191225.v01 (using entries in the PDB archive December 25th 2019)
Refmac	:	5.8.0158
CCP4	:	7.0.044 (Gargrove)
Ideal geometry (proteins)	:	Engh & Huber (2001)
Ideal geometry (DNA, RNA)	:	Parkinson et al. (1996)
Validation Pipeline (wwPDB-VP)	:	2.37.1

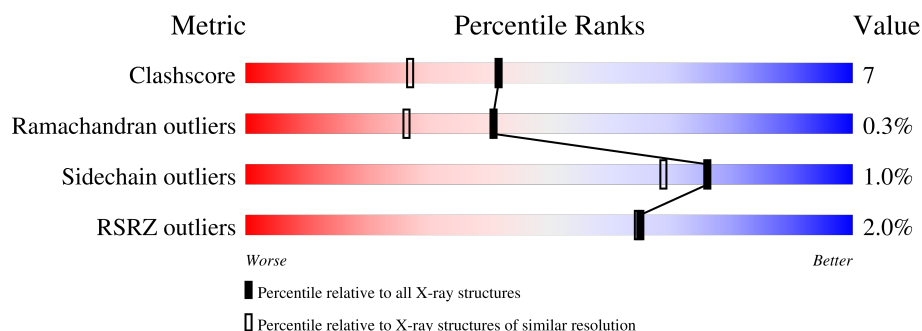
# 1 Overall quality at a glance

The following experimental techniques were used to determine the structure:

*X-RAY DIFFRACTION*

The reported resolution of this entry is 1.86 Å.

Percentile scores (ranging between 0-100) for global validation metrics of the entry are shown in the following graphic. The table shows the number of entries on which the scores are based.



Metric	Whole archive (#Entries)	Similar resolution (#Entries, resolution range(Å))
Clashscore	141614	2625 (1.86-1.86)
Ramachandran outliers	138981	2592 (1.86-1.86)
Sidechain outliers	138945	2592 (1.86-1.86)
RSRZ outliers	127900	2436 (1.86-1.86)

The table below summarises the geometric issues observed across the polymeric chains and their fit to the electron density. The red, orange, yellow and green segments of the lower bar indicate the fraction of residues that contain outliers for  $\geq 3$ , 2, 1 and 0 types of geometric quality criteria respectively. A grey segment represents the fraction of residues that are not modelled. The numeric value for each fraction is indicated below the corresponding segment, with a dot representing fractions  $\leq 5\%$ . The upper red bar (where present) indicates the fraction of residues that have poor fit to the electron density. The numeric value is given above the bar.

Mol	Chain	Length	Quality of chain
1	A	122	<div> <div>3%</div> <div> <div></div> <div>83%</div> <div>14%</div> <div></div> </div> <div></div> </div>
1	B	122	<div> <div>2%</div> <div> <div></div> <div>80%</div> <div>11%</div> <div>7%</div> </div> <div></div> </div>
1	C	122	<div> <div>%</div> <div> <div></div> <div>79%</div> <div>17%</div> </div> <div></div> </div>

## 2 Entry composition

There are 4 unique types of molecules in this entry. The entry contains 2994 atoms, of which 0 are hydrogens and 0 are deuteriums.

In the tables below, the ZeroOcc column contains the number of atoms modelled with zero occupancy, the AltConf column contains the number of residues with at least one atom in alternate conformation and the Trace column contains the number of residues modelled with at most 2 atoms.

- Molecule 1 is a protein called Macrophage migration inhibitory factor.

Mol	Chain	Residues	Atoms					ZeroOcc	AltConf	Trace
1	A	118	Total	C	N	O	S	0	1	0
			907	575	159	167	6			
1	B	114	Total	C	N	O	S	0	2	0
			873	554	151	162	6			
1	C	117	Total	C	N	O	S	0	1	0
			897	569	156	166	6			

There are 24 discrepancies between the modelled and reference sequences:

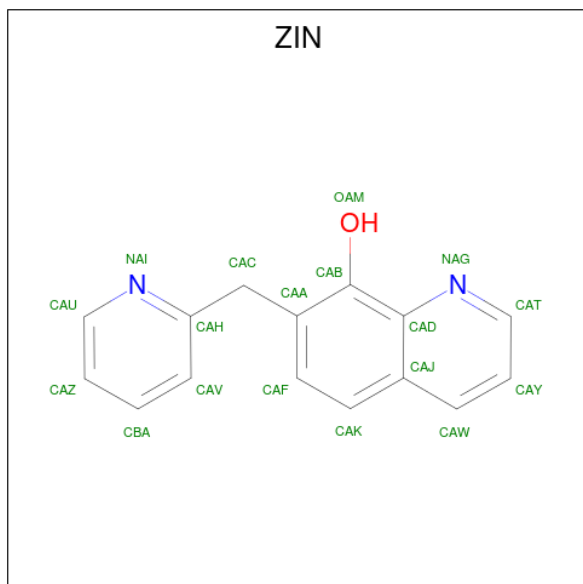
Chain	Residue	Modelled	Actual	Comment	Reference
A	115	LEU	-	expression tag	UNP P14174
A	116	GLU	-	expression tag	UNP P14174
A	117	HIS	-	expression tag	UNP P14174
A	118	HIS	-	expression tag	UNP P14174
A	119	HIS	-	expression tag	UNP P14174
A	120	HIS	-	expression tag	UNP P14174
A	121	HIS	-	expression tag	UNP P14174
A	122	HIS	-	expression tag	UNP P14174
B	115	LEU	-	expression tag	UNP P14174
B	116	GLU	-	expression tag	UNP P14174
B	117	HIS	-	expression tag	UNP P14174
B	118	HIS	-	expression tag	UNP P14174
B	119	HIS	-	expression tag	UNP P14174
B	120	HIS	-	expression tag	UNP P14174
B	121	HIS	-	expression tag	UNP P14174
B	122	HIS	-	expression tag	UNP P14174
C	115	LEU	-	expression tag	UNP P14174
C	116	GLU	-	expression tag	UNP P14174
C	117	HIS	-	expression tag	UNP P14174
C	118	HIS	-	expression tag	UNP P14174
C	119	HIS	-	expression tag	UNP P14174
C	120	HIS	-	expression tag	UNP P14174
C	121	HIS	-	expression tag	UNP P14174

*Continued on next page...*

*Continued from previous page...*

Chain	Residue	Modelled	Actual	Comment	Reference
C	122	HIS	-	expression tag	UNP P14174

- Molecule 2 is 7-(pyridin-2-ylmethyl)quinolin-8-ol (three-letter code: ZIN) (formula:  $C_{15}H_{12}N_2O$ ).



Mol	Chain	Residues	Atoms				ZeroOcc	AltConf
2	A	1	Total	C	N	O	0	0
			18	15	2	1		
2	B	1	Total	C	N	O	0	0
			18	15	2	1		
2	C	1	Total	C	N	O	0	0
			18	15	2	1		

- Molecule 3 is SULFATE ION (three-letter code: SO4) (formula:  $O_4S$ ).



Mol	Chain	Residues	Atoms			ZeroOcc	AltConf
3	A	1	Total	O	S	0	0
			5	4	1		
3	A	1	Total	O	S	0	0
			5	4	1		

- Molecule 4 is water.

Mol	Chain	Residues	Atoms		ZeroOcc	AltConf
4	A	76	Total	O	0	0
			76	76		
4	B	84	Total	O	0	0
			84	84		
4	C	93	Total	O	0	0
			93	93		



## 4 Data and refinement statistics

Property	Value	Source
Space group	P 21 21 21	Depositor
Cell constants a, b, c, $\alpha$ , $\beta$ , $\gamma$	67.49Å 67.43Å 88.74Å 90.00° 90.00° 90.00°	Depositor
Resolution (Å)	23.85 – 1.86 23.85 – 1.86	Depositor EDS
% Data completeness (in resolution range)	99.0 (23.85-1.86) 99.1 (23.85-1.86)	Depositor EDS
$R_{merge}$	0.06	Depositor
$R_{sym}$	(Not available)	Depositor
$\langle I/\sigma(I) \rangle$ <sup>1</sup>	11.56 (at 1.86Å)	Xtriage
Refinement program	CNS, CNX 2005	Depositor
R, $R_{free}$	0.177 , 0.192 0.173 , (Not available)	Depositor DCC
$R_{free}$ test set	No test flags present.	wwPDB-VP
Wilson B-factor (Å <sup>2</sup> )	18.0	Xtriage
Anisotropy	0.074	Xtriage
Bulk solvent $k_{sol}$ (e/Å <sup>3</sup> ), $B_{sol}$ (Å <sup>2</sup> )	0.40 , 44.9	EDS
L-test for twinning <sup>2</sup>	$\langle  L  \rangle = 0.49$ , $\langle L^2 \rangle = 0.32$	Xtriage
Estimated twinning fraction	0.019 for k,h,-l	Xtriage
$F_o, F_c$ correlation	0.95	EDS
Total number of atoms	2994	wwPDB-VP
Average B, all atoms (Å <sup>2</sup> )	18.0	wwPDB-VP

Xtriage's analysis on translational NCS is as follows: *The largest off-origin peak in the Patterson function is 6.49% of the height of the origin peak. No significant pseudotranslation is detected.*

<sup>1</sup>Intensities estimated from amplitudes.

<sup>2</sup>Theoretical values of  $\langle |L| \rangle$ ,  $\langle L^2 \rangle$  for acentric reflections are 0.5, 0.333 respectively for untwinned datasets, and 0.375, 0.2 for perfectly twinned datasets.

## 5 Model quality

### 5.1 Standard geometry

Bond lengths and bond angles in the following residue types are not validated in this section: SO4, ZIN

The Z score for a bond length (or angle) is the number of standard deviations the observed value is removed from the expected value. A bond length (or angle) with  $|Z| > 5$  is considered an outlier worth inspection. RMSZ is the root-mean-square of all Z scores of the bond lengths (or angles).

Mol	Chain	Bond lengths		Bond angles	
		RMSZ	# Z  >5	RMSZ	# Z  >5
1	A	0.24	0/932	0.44	0/1268
1	B	0.25	0/899	0.45	0/1224
1	C	0.25	0/921	0.44	0/1253
All	All	0.25	0/2752	0.44	0/3745

There are no bond length outliers.

There are no bond angle outliers.

There are no chirality outliers.

There are no planarity outliers.

### 5.2 Too-close contacts

In the following table, the Non-H and H(model) columns list the number of non-hydrogen atoms and hydrogen atoms in the chain respectively. The H(added) column lists the number of hydrogen atoms added and optimized by MolProbity. The Clashes column lists the number of clashes within the asymmetric unit, whereas Symm-Clashes lists symmetry-related clashes.

Mol	Chain	Non-H	H(model)	H(added)	Clashes	Symm-Clashes
1	A	907	0	896	15	0
1	B	873	0	870	13	0
1	C	897	0	890	15	0
2	A	18	0	10	1	0
2	B	18	0	10	3	0
2	C	18	0	10	1	0
3	A	10	0	0	1	0
4	A	76	0	0	1	0
4	B	84	0	0	1	0
4	C	93	0	0	2	0
All	All	2994	0	2686	38	0



The all-atom clashscore is defined as the number of clashes found per 1000 atoms (including hydrogen atoms). The all-atom clashscore for this structure is 7.

All (38) close contacts within the same asymmetric unit are listed below, sorted by their clash magnitude.

Atom-1	Atom-2	Interatomic distance (Å)	Clash overlap (Å)
1:B:4:ILE:HD12	1:B:40:HIS:HB3	1.74	0.70
1:C:4:ILE:HD12	1:C:40:HIS:HB3	1.74	0.70
1:A:33:PRO:HG2	1:A:36:TYR:CD2	2.31	0.65
1:A:24:GLN:HG3	4:A:251:HOH:O	1.97	0.63
1:B:63:SER:HA	2:B:123:ZIN:HAV	1.80	0.62
1:B:4:ILE:CD1	1:B:40:HIS:HB3	2.32	0.59
1:A:33:PRO:HG2	1:A:36:TYR:CE2	2.38	0.59
1:C:63:SER:HA	2:C:123:ZIN:HAV	1.85	0.59
1:C:4:ILE:CD1	1:C:40:HIS:HB3	2.33	0.58
1:A:4:ILE:CD1	1:A:40:HIS:HB3	2.36	0.56
1:C:19:LEU:HD22	1:C:39[B]:VAL:HG23	1.88	0.56
1:B:47:MET:HE1	1:B:58:LEU:HG	1.89	0.55
1:C:66:LYS:HG2	4:C:186:HOH:O	2.06	0.54
1:C:102:ASN:HD22	1:C:104:ALA:H	1.55	0.54
1:B:19:LEU:HD22	1:B:39[B]:VAL:HG23	1.92	0.52
1:B:35:GLN:HG2	4:B:165:HOH:O	2.09	0.52
1:A:4:ILE:HD13	1:A:40:HIS:HB3	1.91	0.51
1:C:102:ASN:ND2	1:C:104:ALA:H	2.09	0.51
1:A:117:HIS:HA	3:A:125:SO4:O2	2.11	0.50
1:A:63:SER:HA	2:A:123:ZIN:HAV	1.94	0.49
1:A:25:GLN:HE21	1:A:78:LEU:HD11	1.78	0.49
1:B:63:SER:HA	2:B:123:ZIN:CAV	2.42	0.48
1:A:19:LEU:HD11	1:C:46:LEU:HG	1.96	0.48
1:A:91:PRO:HB2	1:B:109:ASN:HD22	1.80	0.47
1:A:30:THR:OG1	1:A:32:LYS:HG3	2.15	0.46
1:C:1:PRO:HG3	1:C:32:LYS:HD2	2.00	0.44
1:B:64:ILE:N	2:B:123:ZIN:HAV	2.32	0.44
1:A:22:LEU:HD23	1:A:82:LEU:HD13	2.00	0.43
1:B:5:VAL:CG1	1:B:41:VAL:HG22	2.49	0.42
1:A:72:ASN:ND2	1:B:105:ASN:HD22	2.17	0.42
1:C:85:GLU:HG3	4:C:253:HOH:O	2.19	0.42
1:B:109:ASN:O	1:B:110:ASN:HB2	2.20	0.41
1:A:4:ILE:HD12	1:A:40:HIS:HB3	2.03	0.41
1:A:34:PRO:O	1:C:50:GLY:HA2	2.21	0.41
1:B:72:ASN:ND2	1:C:105:ASN:HD22	2.19	0.41
1:C:5:VAL:CG1	1:C:41:VAL:HG22	2.50	0.41
1:C:109:ASN:O	1:C:110:ASN:HB2	2.21	0.40

*Continued on next page...*

*Continued from previous page...*

Atom-1	Atom-2	Interatomic distance (Å)	Clash overlap (Å)
1:C:10:PRO:HA	1:C:44:ASP:OD1	2.22	0.40

There are no symmetry-related clashes.

## 5.3 Torsion angles [i](#)

### 5.3.1 Protein backbone [i](#)

In the following table, the Percentiles column shows the percent Ramachandran outliers of the chain as a percentile score with respect to all X-ray entries followed by that with respect to entries of similar resolution.

The Analysed column shows the number of residues for which the backbone conformation was analysed, and the total number of residues.

Mol	Chain	Analysed	Favoured	Allowed	Outliers	Percentiles	
1	A	117/122 (96%)	115 (98%)	2 (2%)	0	100	100
1	B	114/122 (93%)	113 (99%)	1 (1%)	0	100	100
1	C	116/122 (95%)	114 (98%)	1 (1%)	1 (1%)	17	6
All	All	347/366 (95%)	342 (99%)	4 (1%)	1 (0%)	41	26

All (1) Ramachandran outliers are listed below:

Mol	Chain	Res	Type
1	C	69	GLY

### 5.3.2 Protein sidechains [i](#)

In the following table, the Percentiles column shows the percent sidechain outliers of the chain as a percentile score with respect to all X-ray entries followed by that with respect to entries of similar resolution.

The Analysed column shows the number of residues for which the sidechain conformation was analysed, and the total number of residues.

Mol	Chain	Analysed	Rotameric	Outliers	Percentiles	
1	A	99/102 (97%)	99 (100%)	0	100	100
1	B	96/102 (94%)	93 (97%)	3 (3%)	40	23

*Continued on next page...*

*Continued from previous page...*

Mol	Chain	Analysed	Rotameric	Outliers	Percentiles	
1	C	98/102 (96%)	98 (100%)	0	100	100
All	All	293/306 (96%)	290 (99%)	3 (1%)	76	69

All (3) residues with a non-rotameric sidechain are listed below:

Mol	Chain	Res	Type
1	B	11	ARG
1	B	35	GLN
1	B	47	MET

Sometimes sidechains can be flipped to improve hydrogen bonding and reduce clashes. All (10) such sidechains are listed below:

Mol	Chain	Res	Type
1	A	25	GLN
1	A	105	ASN
1	A	109	ASN
1	B	25	GLN
1	B	105	ASN
1	B	109	ASN
1	C	25	GLN
1	C	102	ASN
1	C	105	ASN
1	C	109	ASN

### 5.3.3 RNA ⓘ

There are no RNA molecules in this entry.

## 5.4 Non-standard residues in protein, DNA, RNA chains ⓘ

There are no non-standard protein/DNA/RNA residues in this entry.

## 5.5 Carbohydrates ⓘ

There are no monosaccharides in this entry.

## 5.6 Ligand geometry

5 ligands are modelled in this entry.

In the following table, the Counts columns list the number of bonds (or angles) for which Mogul statistics could be retrieved, the number of bonds (or angles) that are observed in the model and the number of bonds (or angles) that are defined in the Chemical Component Dictionary. The Link column lists molecule types, if any, to which the group is linked. The Z score for a bond length (or angle) is the number of standard deviations the observed value is removed from the expected value. A bond length (or angle) with  $|Z| > 2$  is considered an outlier worth inspection. RMSZ is the root-mean-square of all Z scores of the bond lengths (or angles).

Mol	Type	Chain	Res	Link	Bond lengths			Bond angles		
					Counts	RMSZ	# $ Z  > 2$	Counts	RMSZ	# $ Z  > 2$
2	ZIN	A	123	1	20,20,20	1.02	0	26,27,27	1.70	5 (19%)
2	ZIN	B	123	1	20,20,20	1.04	0	26,27,27	1.68	5 (19%)
2	ZIN	C	123	1	20,20,20	1.03	0	26,27,27	1.68	7 (26%)
3	SO4	A	124	-	4,4,4	0.39	0	6,6,6	0.16	0
3	SO4	A	125	-	4,4,4	0.37	0	6,6,6	0.16	0

In the following table, the Chirals column lists the number of chiral outliers, the number of chiral centers analysed, the number of these observed in the model and the number defined in the Chemical Component Dictionary. Similar counts are reported in the Torsion and Rings columns. '-' means no outliers of that kind were identified.

Mol	Type	Chain	Res	Link	Chirals	Torsions	Rings
2	ZIN	B	123	1	-	0/4/4/4	0/3/3/3
2	ZIN	C	123	1	-	0/4/4/4	0/3/3/3
2	ZIN	A	123	1	-	0/4/4/4	0/3/3/3

There are no bond length outliers.

All (17) bond angle outliers are listed below:

Mol	Chain	Res	Type	Atoms	Z	Observed(°)	Ideal(°)
2	C	123	ZIN	CAT-NAG-CAD	4.21	122.28	117.31
2	B	123	ZIN	CAT-NAG-CAD	4.15	122.20	117.31
2	A	123	ZIN	CAT-NAG-CAD	4.11	122.16	117.31
2	A	123	ZIN	CAA-CAC-CAH	-3.61	107.90	114.06
2	C	123	ZIN	CAU-NAI-CAH	3.54	122.38	117.41
2	B	123	ZIN	CAA-CAC-CAH	-3.47	108.13	114.06
2	A	123	ZIN	CAU-NAI-CAH	3.47	122.28	117.41
2	B	123	ZIN	CAU-NAI-CAH	3.44	122.24	117.41
2	C	123	ZIN	CAA-CAC-CAH	-3.04	108.86	114.06
2	C	123	ZIN	CAJ-CAD-NAG	-2.54	119.95	122.63

*Continued on next page...*

*Continued from previous page...*

Mol	Chain	Res	Type	Atoms	Z	Observed(°)	Ideal(°)
2	A	123	ZIN	CAJ-CAD-NAG	-2.54	119.95	122.63
2	B	123	ZIN	CAJ-CAD-NAG	-2.44	120.06	122.63
2	C	123	ZIN	CAY-CAT-NAG	-2.33	120.54	123.97
2	B	123	ZIN	CAY-CAT-NAG	-2.33	120.54	123.97
2	A	123	ZIN	CAY-CAT-NAG	-2.27	120.63	123.97
2	C	123	ZIN	CAC-CAH-NAI	2.06	119.82	117.26
2	C	123	ZIN	CAB-CAD-NAG	2.04	120.18	117.48

There are no chirality outliers.

There are no torsion outliers.

There are no ring outliers.

4 monomers are involved in 6 short contacts:

Mol	Chain	Res	Type	Clashes	Symm-Clashes
2	A	123	ZIN	1	0
2	B	123	ZIN	3	0
2	C	123	ZIN	1	0
3	A	125	SO4	1	0

## 5.7 Other polymers [i](#)

There are no such residues in this entry.

## 5.8 Polymer linkage issues [i](#)

There are no chain breaks in this entry.

## 6 Fit of model and data [i](#)

### 6.1 Protein, DNA and RNA chains [i](#)

In the following table, the column labelled ‘#RSRZ> 2’ contains the number (and percentage) of RSRZ outliers, followed by percent RSRZ outliers for the chain as percentile scores relative to all X-ray entries and entries of similar resolution. The OWAB column contains the minimum, median, 95<sup>th</sup> percentile and maximum values of the occupancy-weighted average B-factor per residue. The column labelled ‘Q< 0.9’ lists the number of (and percentage) of residues with an average occupancy less than 0.9.

Mol	Chain	Analysed	<RSRZ>	#RSRZ>2	OWAB(Å <sup>2</sup> )	Q<0.9
1	A	118/122 (96%)	0.11	4 (3%) 45 42	12, 19, 31, 39	0
1	B	114/122 (93%)	-0.12	2 (1%) 68 68	11, 16, 25, 34	0
1	C	117/122 (95%)	-0.25	1 (0%) 84 84	11, 15, 23, 31	0
All	All	349/366 (95%)	-0.09	7 (2%) 65 64	11, 16, 28, 39	0

All (7) RSRZ outliers are listed below:

Mol	Chain	Res	Type	RSRZ
1	A	88	ARG	3.2
1	B	35	GLN	2.9
1	C	88	ARG	2.8
1	A	12	ALA	2.6
1	B	88	ARG	2.5
1	A	16	ASP	2.4
1	A	24	GLN	2.1

### 6.2 Non-standard residues in protein, DNA, RNA chains [i](#)

There are no non-standard protein/DNA/RNA residues in this entry.

### 6.3 Carbohydrates [i](#)

There are no monosaccharides in this entry.

### 6.4 Ligands [i](#)

In the following table, the Atoms column lists the number of modelled atoms in the group and the number defined in the chemical component dictionary. The B-factors column lists the minimum,

median, 95<sup>th</sup> percentile and maximum values of B factors of atoms in the group. The column labelled 'Q< 0.9' lists the number of atoms with occupancy less than 0.9.

Mol	Type	Chain	Res	Atoms	RSCC	RSR	B-factors(Å <sup>2</sup> )	Q<0.9
3	SO4	A	124	5/5	0.82	0.30	63,64,65,65	0
2	ZIN	B	123	18/18	0.93	0.11	16,21,24,25	0
2	ZIN	A	123	18/18	0.93	0.12	17,20,24,24	0
2	ZIN	C	123	18/18	0.94	0.10	15,19,22,22	0
3	SO4	A	125	5/5	0.94	0.22	39,41,44,45	0

## 6.5 Other polymers [i](#)

There are no such residues in this entry.