



Full wwPDB X-ray Structure Validation Report ⓘ

Jun 13, 2024 – 10:22 AM EDT

PDB ID : 1MEW
Title : Inosine Monophosphate Dehydrogenase (IMPDH) From Tritrichomonas Foetus with XMP and NAD bound
Authors : Prosise, G.L.; Luecke, H.
Deposited on : 2002-08-08
Resolution : 2.15 Å(reported)

This is a Full wwPDB X-ray Structure Validation Report for a publicly released PDB entry.

We welcome your comments at validation@mail.wwpdb.org

A user guide is available at

<https://www.wwpdb.org/validation/2017/XrayValidationReportHelp>

with specific help available everywhere you see the ⓘ symbol.

The types of validation reports are described at

<http://www.wwpdb.org/validation/2017/FAQs#types>.

The following versions of software and data (see [references ⓘ](#)) were used in the production of this report:

MolProbity	:	4.02b-467
Mogul	:	1.8.5 (274361), CSD as541be (2020)
Xtriage (Phenix)	:	1.13
EDS	:	2.36.2
buster-report	:	1.1.7 (2018)
Percentile statistics	:	20191225.v01 (using entries in the PDB archive December 25th 2019)
Refmac	:	5.8.0158
CCP4	:	7.0.044 (Gargrove)
Ideal geometry (proteins)	:	Engh & Huber (2001)
Ideal geometry (DNA, RNA)	:	Parkinson et al. (1996)
Validation Pipeline (wwPDB-VP)	:	2.36.2

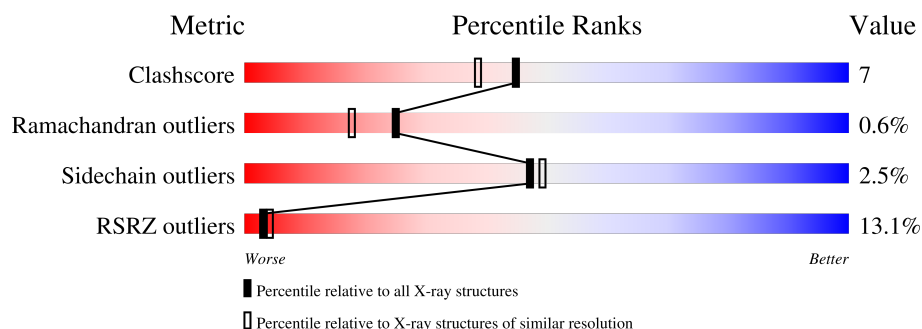
1 Overall quality at a glance

The following experimental techniques were used to determine the structure:

X-RAY DIFFRACTION

The reported resolution of this entry is 2.15 Å.

Percentile scores (ranging between 0-100) for global validation metrics of the entry are shown in the following graphic. The table shows the number of entries on which the scores are based.



Metric	Whole archive (#Entries)	Similar resolution (#Entries, resolution range(Å))
Clashscore	141614	1585 (2.16-2.16)
Ramachandran outliers	138981	1560 (2.16-2.16)
Sidechain outliers	138945	1559 (2.16-2.16)
RSRZ outliers	127900	1456 (2.16-2.16)

The table below summarises the geometric issues observed across the polymeric chains and their fit to the electron density. The red, orange, yellow and green segments of the lower bar indicate the fraction of residues that contain outliers for ≥ 3 , 2, 1 and 0 types of geometric quality criteria respectively. A grey segment represents the fraction of residues that are not modelled. The numeric value for each fraction is indicated below the corresponding segment, with a dot representing fractions $\leq 5\%$. The upper red bar (where present) indicates the fraction of residues that have poor fit to the electron density. The numeric value is given above the bar.

Mol	Chain	Length	Quality of chain
1	A	503	

The following table lists non-polymeric compounds, carbohydrate monomers and non-standard residues in protein, DNA, RNA chains that are outliers for geometric or electron-density-fit criteria:

Mol	Type	Chain	Res	Chirality	Geometry	Clashes	Electron density
4	NAD	A	987	X	-	-	-

2 Entry composition [i](#)

There are 5 unique types of molecules in this entry. The entry contains 2868 atoms, of which 0 are hydrogens and 0 are deuteriums.

In the tables below, the ZeroOcc column contains the number of atoms modelled with zero occupancy, the AltConf column contains the number of residues with at least one atom in alternate conformation and the Trace column contains the number of residues modelled with at most 2 atoms.

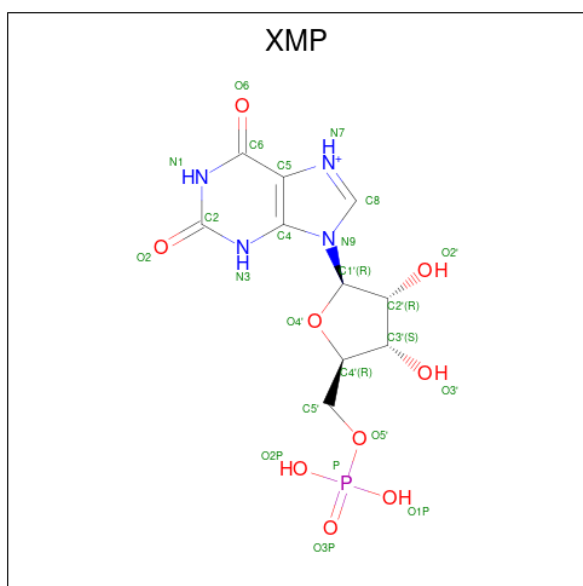
- Molecule 1 is a protein called INOSINE-5'-MONOPHOSPHATE DEHYDROGENASE.

Mol	Chain	Residues	Atoms					ZeroOcc	AltConf	Trace
1	A	344	Total	C	N	O	S	0	0	0
			2635	1668	451	502	14			

- Molecule 2 is POTASSIUM ION (three-letter code: K) (formula: K).

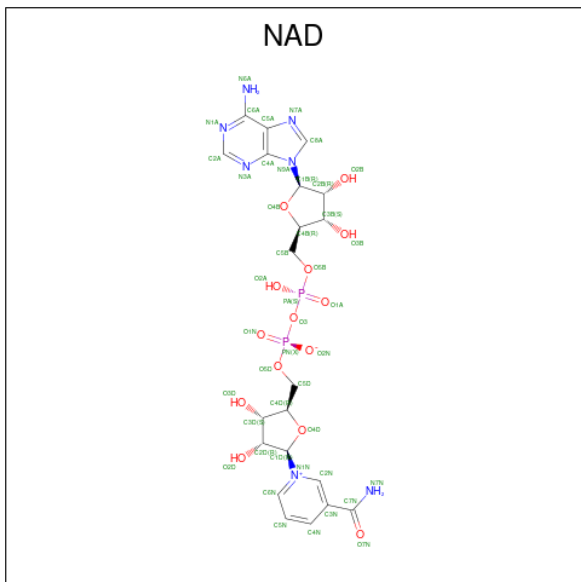
Mol	Chain	Residues	Atoms		ZeroOcc	AltConf
2	A	1	Total	K	0	0
			1	1		

- Molecule 3 is XANTHOSINE-5'-MONOPHOSPHATE (three-letter code: XMP) (formula: $C_{10}H_{14}N_4O_9P$).



Mol	Chain	Residues	Atoms					ZeroOcc	AltConf
3	A	1	Total	C	N	O	P	0	0
			24	10	4	9	1		

- Molecule 4 is NICOTINAMIDE-ADENINE-DINUCLEOTIDE (three-letter code: NAD) (formula: $C_{21}H_{27}N_7O_{14}P_2$).



Mol	Chain	Residues	Atoms					ZeroOcc	AltConf
4	A	1	Total	C	N	O	P	0	0
			44	21	7	14	2		

- Molecule 5 is water.

Mol	Chain	Residues	Atoms	ZeroOcc	AltConf
5	A	164	Total O 164 164	0	0

• Molecule 1: INOSINE-5'-MONOPHOSPHATE DEHYDROGENASE



4 Data and refinement statistics

Property	Value	Source
Space group	P 4 3 2	Depositor
Cell constants a, b, c, α , β , γ	153.83Å 153.83Å 153.83Å 90.00° 90.00° 90.00°	Depositor
Resolution (Å)	29.61 – 2.15 48.64 – 2.74	Depositor EDS
% Data completeness (in resolution range)	98.3 (29.61-2.15) 87.1 (48.64-2.74)	Depositor EDS
R_{merge}	0.08	Depositor
R_{sym}	(Not available)	Depositor
$\langle I/\sigma(I) \rangle$ ¹	2.22 (at 2.73Å)	Xtriage
Refinement program	CNS	Depositor
R, R_{free}	0.224 , 0.246 0.218 , (Not available)	Depositor DCC
R_{free} test set	No test flags present.	wwPDB-VP
Wilson B-factor (Å ²)	38.2	Xtriage
Anisotropy	0.000	Xtriage
Bulk solvent k_{sol} (e/Å ³), B_{sol} (Å ²)	0.37 , 36.4	EDS
L-test for twinning ²	$\langle L \rangle = 0.50$, $\langle L^2 \rangle = 0.33$	Xtriage
Estimated twinning fraction	No twinning to report.	Xtriage
F_o, F_c correlation	0.91	EDS
Total number of atoms	2868	wwPDB-VP
Average B, all atoms (Å ²)	36.0	wwPDB-VP

Xtriage's analysis on translational NCS is as follows: *The largest off-origin peak in the Patterson function is 3.54% of the height of the origin peak. No significant pseudotranslation is detected.*

¹Intensities estimated from amplitudes.

²Theoretical values of $\langle |L| \rangle$, $\langle L^2 \rangle$ for acentric reflections are 0.5, 0.333 respectively for untwinned datasets, and 0.375, 0.2 for perfectly twinned datasets.

5 Model quality

5.1 Standard geometry

Bond lengths and bond angles in the following residue types are not validated in this section: K, NAD, XMP

The Z score for a bond length (or angle) is the number of standard deviations the observed value is removed from the expected value. A bond length (or angle) with $|Z| > 5$ is considered an outlier worth inspection. RMSZ is the root-mean-square of all Z scores of the bond lengths (or angles).

Mol	Chain	Bond lengths		Bond angles	
		RMSZ	$\# Z > 5$	RMSZ	$\# Z > 5$
1	A	0.33	0/2680	0.57	0/3611

There are no bond length outliers.

There are no bond angle outliers.

There are no chirality outliers.

There are no planarity outliers.

5.2 Too-close contacts

In the following table, the Non-H and H(model) columns list the number of non-hydrogen atoms and hydrogen atoms in the chain respectively. The H(added) column lists the number of hydrogen atoms added and optimized by MolProbity. The Clashes column lists the number of clashes within the asymmetric unit, whereas Symm-Clashes lists symmetry-related clashes.

Mol	Chain	Non-H	H(model)	H(added)	Clashes	Symm-Clashes
1	A	2635	0	2625	35	0
2	A	1	0	0	0	0
3	A	24	0	12	2	0
4	A	44	0	26	3	0
5	A	164	0	0	0	0
All	All	2868	0	2663	35	0

The all-atom clashscore is defined as the number of clashes found per 1000 atoms (including hydrogen atoms). The all-atom clashscore for this structure is 7.

All (35) close contacts within the same asymmetric unit are listed below, sorted by their clash magnitude.

Atom-1	Atom-2	Interatomic distance (Å)	Clash overlap (Å)
1:A:240:THR:OG1	4:A:987:NAD:H2A	1.65	0.96
1:A:408:GLU:H	3:A:602:XMP:H7	1.19	0.89
1:A:59:MET:HB2	1:A:62:VAL:HG13	1.67	0.76
1:A:361:ILE:HD12	1:A:378:ILE:HG21	1.73	0.69
1:A:344:LYS:O	1:A:348:GLU:HG3	1.94	0.67
1:A:397:ILE:HG22	1:A:398:ASN:OD1	1.93	0.67
1:A:247:VAL:HB	1:A:248:PRO:HD3	1.78	0.66
1:A:362:VAL:H	1:A:366:HIS:HD2	1.45	0.63
1:A:444:LYS:O	1:A:448:GLU:HG3	1.99	0.62
1:A:246:ARG:HG2	1:A:250:LEU:HD22	1.83	0.61
1:A:41:GLN:H	1:A:44:GLN:NE2	2.00	0.60
1:A:59:MET:HB2	1:A:62:VAL:CG1	2.35	0.56
1:A:339:VAL:HG21	1:A:374:GLY:HA3	1.89	0.55
1:A:64:GLY:HA2	1:A:92:MET:HE3	1.89	0.54
1:A:478:VAL:HG12	1:A:482:SER:HB2	1.90	0.54
1:A:431:GLU:HB3	4:A:987:NAD:H5N	1.91	0.52
1:A:225:LEU:HG	1:A:233:LEU:HD22	1.93	0.49
1:A:408:GLU:N	3:A:602:XMP:H7	2.00	0.48
1:A:87:GLU:H	1:A:87:GLU:CD	2.16	0.48
1:A:64:GLY:HA2	1:A:92:MET:CE	2.45	0.47
1:A:356:CYS:HB2	1:A:377:PHE:CE2	2.50	0.46
1:A:41:GLN:H	1:A:44:GLN:HE21	1.63	0.46
1:A:80:ILE:HD13	1:A:234:VAL:CG2	2.46	0.45
1:A:443:LEU:C	1:A:443:LEU:HD23	2.37	0.45
1:A:60:GLN:HG3	1:A:408:GLU:OE2	2.16	0.44
1:A:397:ILE:HD12	1:A:402:MET:HG3	1.99	0.44
1:A:382:ARG:NH1	1:A:437:VAL:HG12	2.33	0.43
1:A:41:GLN:OE1	1:A:351:ILE:HG12	2.18	0.43
1:A:413:ALA:C	1:A:414:ARG:HG2	2.39	0.43
1:A:413:ALA:O	1:A:415:ASN:N	2.52	0.43
1:A:406:TRP:HB3	1:A:434:ASP:OD1	2.18	0.42
1:A:241:ARG:NH2	4:A:987:NAD:O2B	2.50	0.42
1:A:65:GLU:HG3	1:A:92:MET:HE2	2.02	0.41
1:A:51:LYS:HB2	1:A:75:GLY:CA	2.50	0.41
1:A:371:LEU:O	1:A:470:GLN:HG2	2.21	0.40

There are no symmetry-related clashes.

5.3 Torsion angles

5.3.1 Protein backbone

In the following table, the Percentiles column shows the percent Ramachandran outliers of the chain as a percentile score with respect to all X-ray entries followed by that with respect to entries of similar resolution.

The Analysed column shows the number of residues for which the backbone conformation was analysed, and the total number of residues.

Mol	Chain	Analysed	Favoured	Allowed	Outliers	Percentiles	
1	A	336/503 (67%)	316 (94%)	18 (5%)	2 (1%)	25	18

All (2) Ramachandran outliers are listed below:

Mol	Chain	Res	Type
1	A	414	ARG
1	A	315	GLY

5.3.2 Protein sidechains

In the following table, the Percentiles column shows the percent sidechain outliers of the chain as a percentile score with respect to all X-ray entries followed by that with respect to entries of similar resolution.

The Analysed column shows the number of residues for which the sidechain conformation was analysed, and the total number of residues.

Mol	Chain	Analysed	Rotameric	Outliers	Percentiles	
1	A	280/424 (66%)	273 (98%)	7 (2%)	47	49

All (7) residues with a non-rotameric sidechain are listed below:

Mol	Chain	Res	Type
1	A	33	LEU
1	A	62	VAL
1	A	87	GLU
1	A	250	LEU
1	A	252	GLU
1	A	266	PHE
1	A	415	ASN

Sometimes sidechains can be flipped to improve hydrogen bonding and reduce clashes. All (7) such sidechains are listed below:

Mol	Chain	Res	Type
1	A	6	ASN
1	A	13	ASN
1	A	44	GLN
1	A	331	GLN
1	A	366	HIS
1	A	415	ASN
1	A	470	GLN

5.3.3 RNA ⓘ

There are no RNA molecules in this entry.

5.4 Non-standard residues in protein, DNA, RNA chains ⓘ

There are no non-standard protein/DNA/RNA residues in this entry.

5.5 Carbohydrates ⓘ

There are no monosaccharides in this entry.

5.6 Ligand geometry ⓘ

Of 3 ligands modelled in this entry, 1 is monoatomic - leaving 2 for Mogul analysis.

In the following table, the Counts columns list the number of bonds (or angles) for which Mogul statistics could be retrieved, the number of bonds (or angles) that are observed in the model and the number of bonds (or angles) that are defined in the Chemical Component Dictionary. The Link column lists molecule types, if any, to which the group is linked. The Z score for a bond length (or angle) is the number of standard deviations the observed value is removed from the expected value. A bond length (or angle) with $|Z| > 2$ is considered an outlier worth inspection. RMSZ is the root-mean-square of all Z scores of the bond lengths (or angles).

Mol	Type	Chain	Res	Link	Bond lengths			Bond angles		
					Counts	RMSZ	$\# Z > 2$	Counts	RMSZ	$\# Z > 2$
4	NAD	A	987	-	42,48,48	1.77	5 (11%)	50,73,73	1.20	3 (6%)
3	XMP	A	602	-	20,26,26	1.49	2 (10%)	27,40,40	3.35	8 (29%)

In the following table, the Chirals column lists the number of chiral outliers, the number of chiral centers analysed, the number of these observed in the model and the number defined in the Chemical Component Dictionary. Similar counts are reported in the Torsion and Rings columns. '-' means no outliers of that kind were identified.

Mol	Type	Chain	Res	Link	Chirals	Torsions	Rings
4	NAD	A	987	-	2/2/11/11	2/26/62/62	0/5/5/5
3	XMP	A	602	-	-	0/6/26/26	0/3/3/3

All (7) bond length outliers are listed below:

Mol	Chain	Res	Type	Atoms	Z	Observed(Å)	Ideal(Å)
4	A	987	NAD	C2N-N1N	6.53	1.42	1.35
4	A	987	NAD	O4B-C1B	4.96	1.48	1.41
4	A	987	NAD	O4D-C1D	4.46	1.47	1.41
3	A	602	XMP	C8-N7	-4.18	1.27	1.35
4	A	987	NAD	C6N-N1N	2.86	1.42	1.35
4	A	987	NAD	C3N-C7N	2.71	1.54	1.50
3	A	602	XMP	C5-C6	-2.48	1.42	1.47

All (11) bond angle outliers are listed below:

Mol	Chain	Res	Type	Atoms	Z	Observed(°)	Ideal(°)
3	A	602	XMP	N3-C2-N1	11.77	122.74	115.90
3	A	602	XMP	C4-N3-C2	-9.58	113.14	128.11
4	A	987	NAD	N3A-C2A-N1A	-5.09	120.73	128.68
3	A	602	XMP	P-O5'-C5'	4.08	129.53	118.30
3	A	602	XMP	O4'-C1'-C2'	-3.57	101.70	106.93
4	A	987	NAD	PN-O3-PA	-3.28	121.58	132.83
3	A	602	XMP	O4'-C4'-C3'	-2.64	99.88	105.11
3	A	602	XMP	C6-N1-C2	-2.27	125.09	126.88
4	A	987	NAD	C6N-N1N-C2N	-2.19	119.98	121.97
3	A	602	XMP	O5'-P-O3P	-2.05	100.74	106.47
3	A	602	XMP	O2-C2-N3	-2.02	119.17	122.08

All (2) chirality outliers are listed below:

Mol	Chain	Res	Type	Atom
4	A	987	NAD	C4B
4	A	987	NAD	C1B

All (2) torsion outliers are listed below:

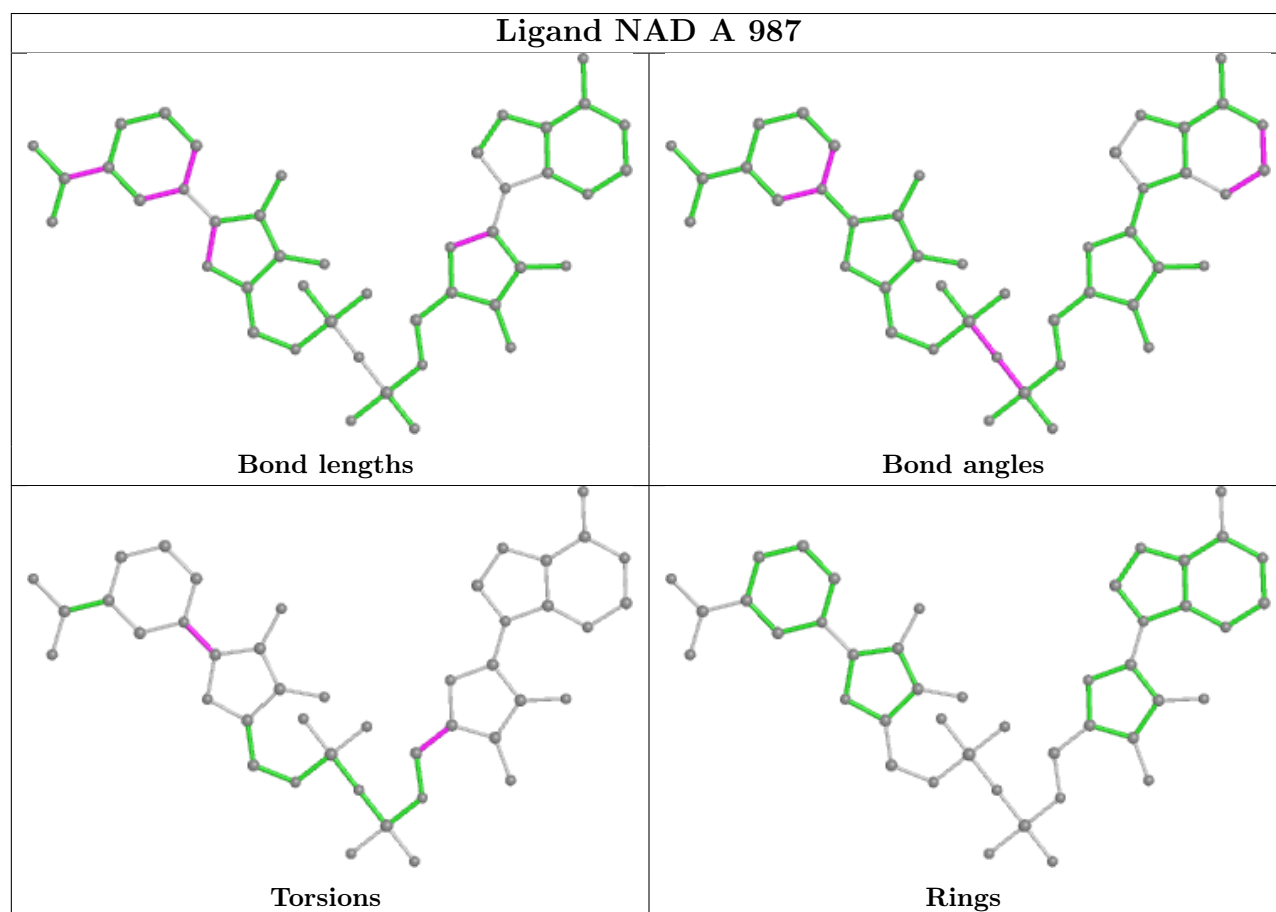
Mol	Chain	Res	Type	Atoms
4	A	987	NAD	C2D-C1D-N1N-C6N
4	A	987	NAD	O4B-C4B-C5B-O5B

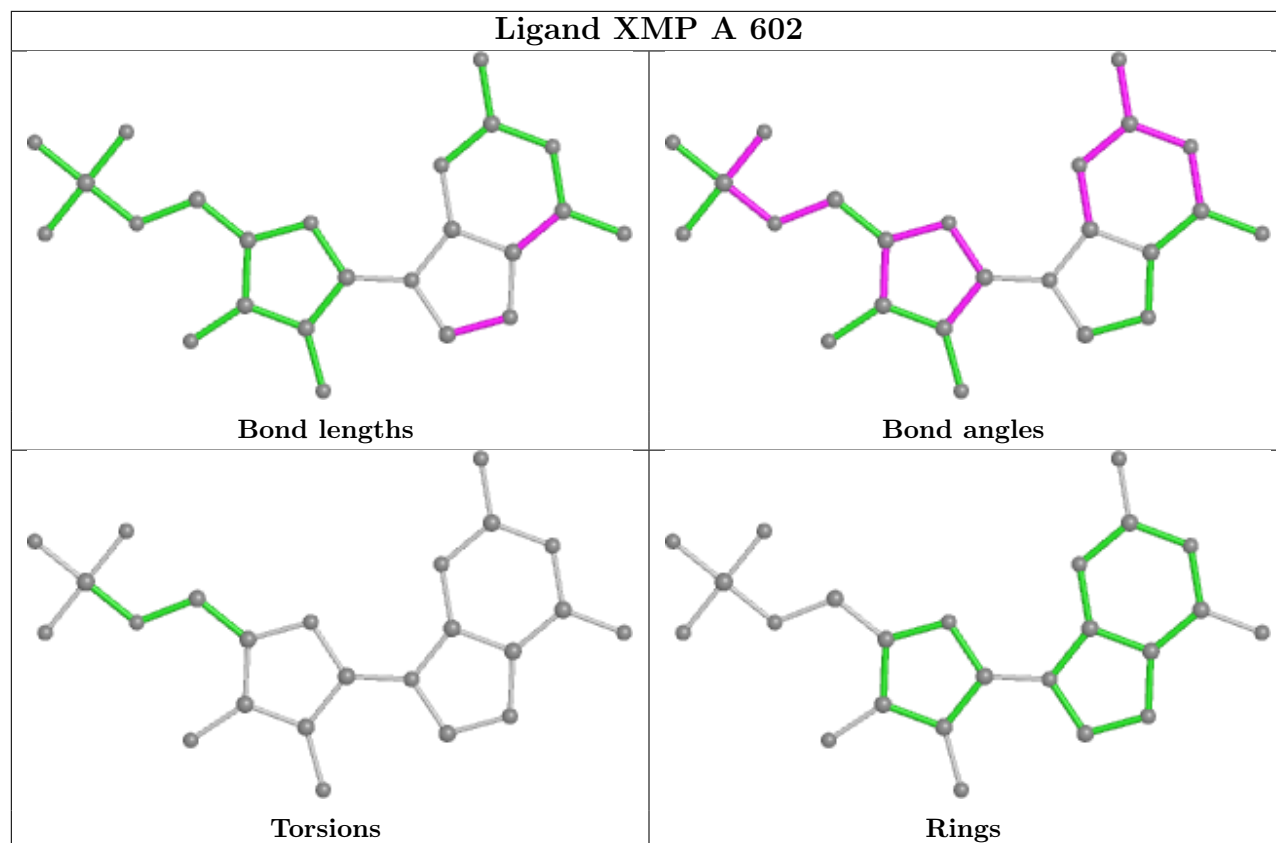
There are no ring outliers.

2 monomers are involved in 5 short contacts:

Mol	Chain	Res	Type	Clashes	Symm-Clashes
4	A	987	NAD	3	0
3	A	602	XMP	2	0

The following is a two-dimensional graphical depiction of Mogul quality analysis of bond lengths, bond angles, torsion angles, and ring geometry for all instances of the Ligand of Interest. In addition, ligands with molecular weight > 250 and outliers as shown on the validation Tables will also be included. For torsion angles, if less than 5% of the Mogul distribution of torsion angles is within 10 degrees of the torsion angle in question, then that torsion angle is considered an outlier. Any bond that is central to one or more torsion angles identified as an outlier by Mogul will be highlighted in the graph. For rings, the root-mean-square deviation (RMSD) between the ring in question and similar rings identified by Mogul is calculated over all ring torsion angles. If the average RMSD is greater than 60 degrees and the minimal RMSD between the ring in question and any Mogul-identified rings is also greater than 60 degrees, then that ring is considered an outlier. The outliers are highlighted in purple. The color gray indicates Mogul did not find sufficient equivalents in the CSD to analyse the geometry.





5.7 Other polymers [i](#)

There are no such residues in this entry.

5.8 Polymer linkage issues [i](#)

There are no chain breaks in this entry.

6 Fit of model and data ⓘ

6.1 Protein, DNA and RNA chains ⓘ

In the following table, the column labelled ‘#RSRZ> 2’ contains the number (and percentage) of RSRZ outliers, followed by percent RSRZ outliers for the chain as percentile scores relative to all X-ray entries and entries of similar resolution. The OWAB column contains the minimum, median, 95th percentile and maximum values of the occupancy-weighted average B-factor per residue. The column labelled ‘Q< 0.9’ lists the number of (and percentage) of residues with an average occupancy less than 0.9.

Mol	Chain	Analysed	<RSRZ>	#RSRZ>2	OWAB(Å ²)	Q<0.9
1	A	344/503 (68%)	1.05	45 (13%) 3 4	22, 32, 56, 76	0

All (45) RSRZ outliers are listed below:

Mol	Chain	Res	Type	RSRZ
1	A	315	GLY	8.4
1	A	415	ASN	8.1
1	A	322	ARG	7.7
1	A	416	TRP	7.0
1	A	316	GLY	6.6
1	A	317	SER	6.3
1	A	414	ARG	5.3
1	A	431	GLU	5.0
1	A	323	GLU	4.4
1	A	222	HIS	4.3
1	A	433	VAL	4.1
1	A	413	ALA	3.6
1	A	324	GLN	3.5
1	A	411	SER	3.4
1	A	101	ALA	3.3
1	A	393	ARG	3.0
1	A	276	TRP	3.0
1	A	80	ILE	3.0
1	A	99	PHE	2.9
1	A	252	GLU	2.8
1	A	250	LEU	2.8
1	A	90	ALA	2.7
1	A	398	ASN	2.7
1	A	245	GLU	2.7
1	A	382	ARG	2.7
1	A	269	TRP	2.6
1	A	405	TYR	2.5

Continued on next page...

Continued from previous page...

Mol	Chain	Res	Type	RSRZ
1	A	95	ALA	2.5
1	A	272	ILE	2.5
1	A	65	GLU	2.5
1	A	481	VAL	2.5
1	A	94	HIS	2.5
1	A	436	TYR	2.5
1	A	96	VAL	2.4
1	A	6	ASN	2.4
1	A	395	VAL	2.4
1	A	86	ILE	2.3
1	A	281	TYR	2.2
1	A	437	VAL	2.2
1	A	98	ASN	2.2
1	A	249	ALA	2.1
1	A	254	GLY	2.1
1	A	285	VAL	2.1
1	A	385	ALA	2.0
1	A	388	GLU	2.0

6.2 Non-standard residues in protein, DNA, RNA chains [i](#)

There are no non-standard protein/DNA/RNA residues in this entry.

6.3 Carbohydrates [i](#)

There are no monosaccharides in this entry.

6.4 Ligands [i](#)

In the following table, the Atoms column lists the number of modelled atoms in the group and the number defined in the chemical component dictionary. The B-factors column lists the minimum, median, 95th percentile and maximum values of B factors of atoms in the group. The column labelled 'Q< 0.9' lists the number of atoms with occupancy less than 0.9.

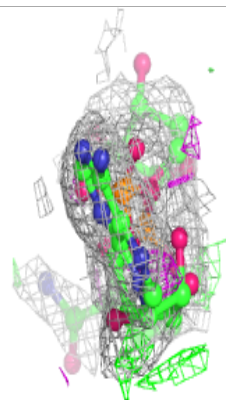
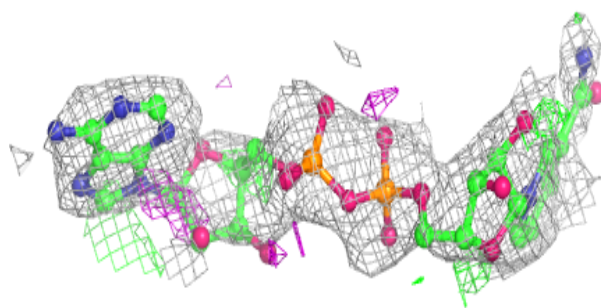
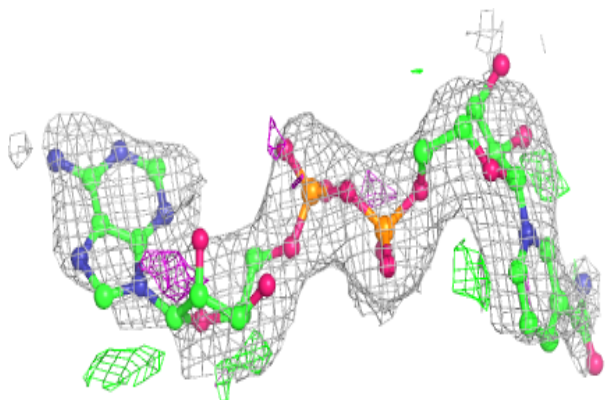
Mol	Type	Chain	Res	Atoms	RSCC	RSR	B-factors(\AA^2)	Q<0.9
4	NAD	A	987	44/44	0.85	0.28	68,70,72,73	0
3	XMP	A	602	24/24	0.96	0.14	28,30,33,33	0
2	K	A	900	1/1	0.96	0.20	33,33,33,33	1

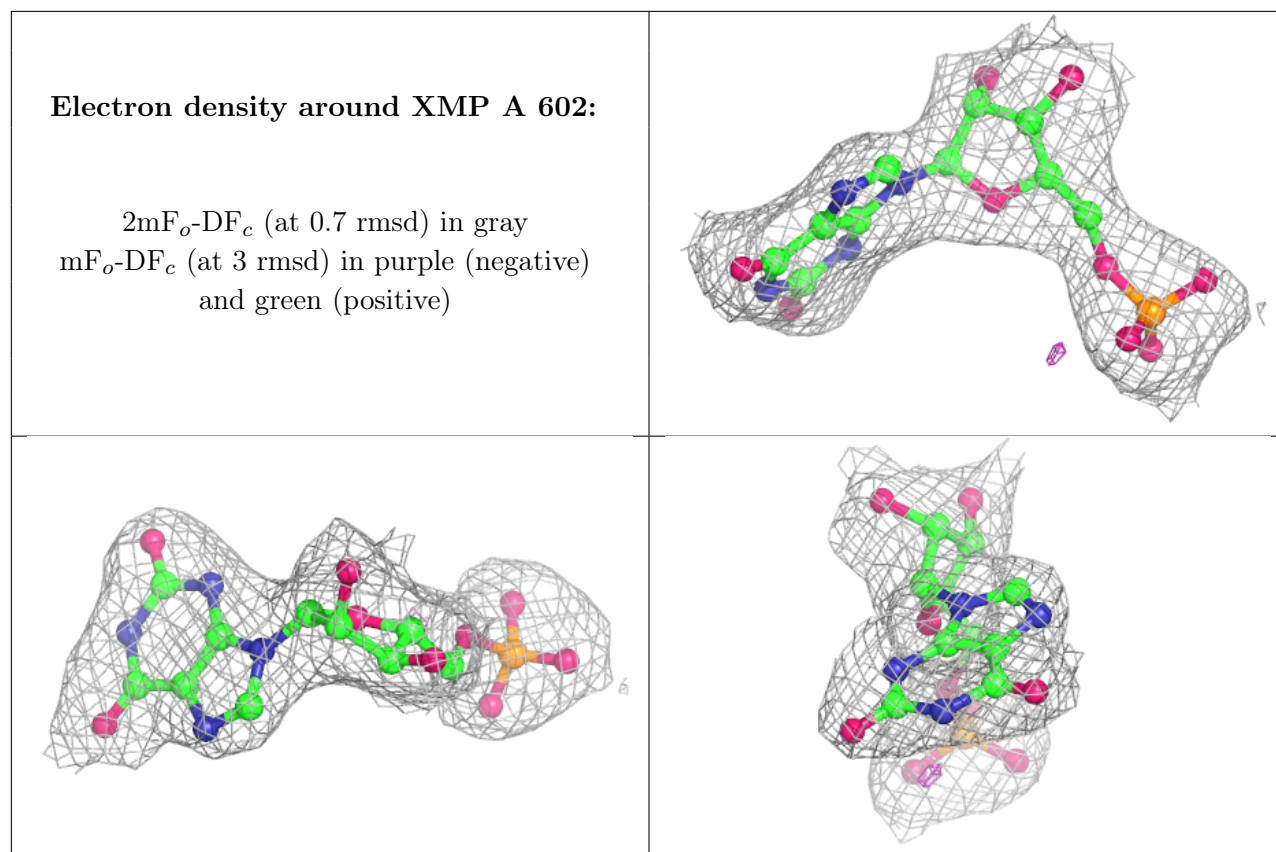
The following is a graphical depiction of the model fit to experimental electron density of all

instances of the Ligand of Interest. In addition, ligands with molecular weight > 250 and outliers as shown on the geometry validation Tables will also be included. Each fit is shown from different orientation to approximate a three-dimensional view.

Electron density around NAD A 987:

$2mF_o-DF_c$ (at 0.7 rmsd) in gray
 mF_o-DF_c (at 3 rmsd) in purple (negative)
and green (positive)





6.5 Other polymers [i](#)

There are no such residues in this entry.