



Full wwPDB X-ray Structure Validation Report ⓘ

Jun 22, 2024 – 10:43 PM EDT

PDB ID : 4P4I
Title : X-ray structure of human glutamate carboxypeptidase II (GCPII) in complex with a phosphoramidate inhibitor T33
Authors : Barinka, C.
Deposited on : 2014-03-12
Resolution : 1.87 Å(reported)

This is a Full wwPDB X-ray Structure Validation Report for a publicly released PDB entry.

We welcome your comments at validation@mail.wwpdb.org

A user guide is available at

<https://www.wwpdb.org/validation/2017/XrayValidationReportHelp>

with specific help available everywhere you see the ⓘ symbol.

The types of validation reports are described at

<http://www.wwpdb.org/validation/2017/FAQs#types>.

The following versions of software and data (see [references ⓘ](#)) were used in the production of this report:

MolProbity	:	4.02b-467
Mogul	:	1.8.5 (274361), CSD as541be (2020)
Xtriage (Phenix)	:	1.13
EDS	:	2.37.1
buster-report	:	1.1.7 (2018)
Percentile statistics	:	20191225.v01 (using entries in the PDB archive December 25th 2019)
Refmac	:	5.8.0158
CCP4	:	7.0.044 (Gargrove)
Ideal geometry (proteins)	:	Engh & Huber (2001)
Ideal geometry (DNA, RNA)	:	Parkinson et al. (1996)
Validation Pipeline (wwPDB-VP)	:	2.37.1

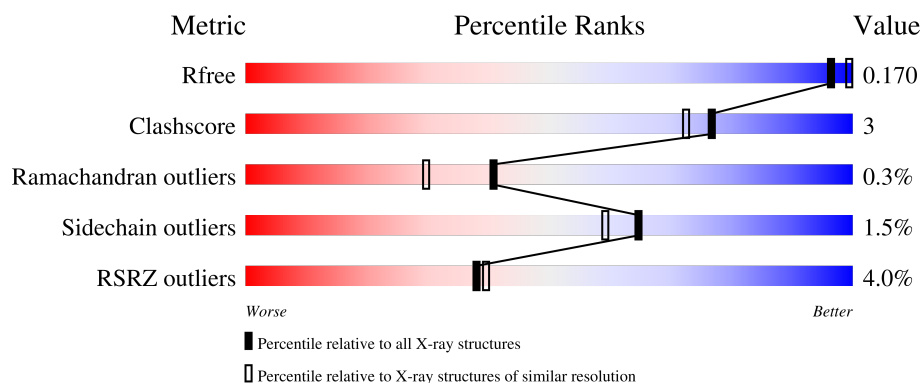
1 Overall quality at a glance

The following experimental techniques were used to determine the structure:

X-RAY DIFFRACTION

The reported resolution of this entry is 1.87 Å.

Percentile scores (ranging between 0-100) for global validation metrics of the entry are shown in the following graphic. The table shows the number of entries on which the scores are based.



Metric	Whole archive (#Entries)	Similar resolution (#Entries, resolution range(Å))
R_{free}	130704	9470 (1.90-1.86)
Clashscore	141614	10282 (1.90-1.86)
Ramachandran outliers	138981	10152 (1.90-1.86)
Sidechain outliers	138945	10152 (1.90-1.86)
RSRZ outliers	127900	9303 (1.90-1.86)

The table below summarises the geometric issues observed across the polymeric chains and their fit to the electron density. The red, orange, yellow and green segments of the lower bar indicate the fraction of residues that contain outliers for ≥ 3 , 2, 1 and 0 types of geometric quality criteria respectively. A grey segment represents the fraction of residues that are not modelled. The numeric value for each fraction is indicated below the corresponding segment, with a dot representing fractions $\leq 5\%$. The upper red bar (where present) indicates the fraction of residues that have poor fit to the electron density. The numeric value is given above the bar.

Mol	Chain	Length	Quality of chain
1	A	707	<div> <div>4%</div> <div>90%</div> <div>7%</div> </div>
2	B	2	<div> <div>50%</div> <div>50%</div> </div>
2	C	2	<div> <div>100%</div> </div>
2	D	2	<div> <div>100%</div> </div>
3	E	4	<div> <div>100%</div> </div>

2 Entry composition [i](#)

There are 9 unique types of molecules in this entry. The entry contains 6548 atoms, of which 0 are hydrogens and 0 are deuteriums.

In the tables below, the ZeroOcc column contains the number of atoms modelled with zero occupancy, the AltConf column contains the number of residues with at least one atom in alternate conformation and the Trace column contains the number of residues modelled with at most 2 atoms.

- Molecule 1 is a protein called Glutamate carboxypeptidase 2.

Mol	Chain	Residues	Atoms					ZeroOcc	AltConf	Trace
1	A	692	Total	C	N	O	S	0	46	0
			5796	3715	974	1086	21			

- Molecule 2 is an oligosaccharide called 2-acetamido-2-deoxy-beta-D-glucopyranose-(1-4)-2-acetamido-2-deoxy-beta-D-glucopyranose.



Mol	Chain	Residues	Atoms				ZeroOcc	AltConf	Trace
2	B	2	Total	C	N	O	0	0	0
			28	16	2	10			
2	C	2	Total	C	N	O	0	0	0
			28	16	2	10			
2	D	2	Total	C	N	O	0	0	0
			28	16	2	10			

- Molecule 3 is an oligosaccharide called alpha-D-mannopyranose-(1-3)-beta-D-mannopyranose-(1-4)-2-acetamido-2-deoxy-beta-D-glucopyranose-(1-4)-2-acetamido-2-deoxy-beta-D-glucopyranose.



Mol	Chain	Residues	Atoms				ZeroOcc	AltConf	Trace
3	E	4	Total	C	N	O	0	0	0
			50	28	2	20			

- Molecule 4 is 2-acetamido-2-deoxy-beta-D-glucopyranose (three-letter code: NAG) (formula: C₈H₁₅NO₆).



Mol	Chain	Residues	Atoms				ZeroOcc	AltConf
4	A	1	Total	C	N	O	0	0
			14	8	1	5		
4	A	1	Total	C	N	O	0	0
			14	8	1	5		
4	A	1	Total	C	N	O	0	0
			14	8	1	5		

- Molecule 5 is ZINC ION (three-letter code: ZN) (formula: Zn).

Mol	Chain	Residues	Atoms		ZeroOcc	AltConf
5	A	2	Total	Zn	0	0
			2	2		

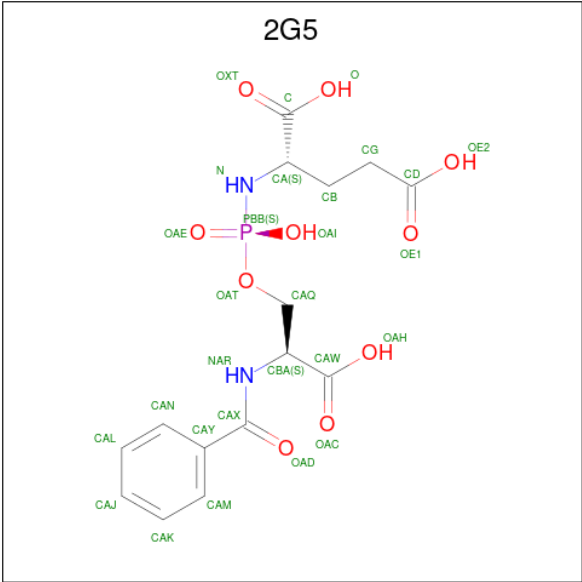
- Molecule 6 is CALCIUM ION (three-letter code: CA) (formula: Ca).

Mol	Chain	Residues	Atoms		ZeroOcc	AltConf
6	A	1	Total	Ca	0	0
			1	1		

- Molecule 7 is CHLORIDE ION (three-letter code: CL) (formula: Cl).

Mol	Chain	Residues	Atoms		ZeroOcc	AltConf
7	A	1	Total	Cl	0	0
			1	1		

- Molecule 8 is N-[(S)-[(2S)-2-(benzoylamino)-2-carboxyethoxy](hydroxy)phosphoryl]-L-glutamic acid (three-letter code: 2G5) (formula: C₁₅H₁₉N₂O₁₀P).



Mol	Chain	Residues	Atoms					ZeroOcc	AltConf
			Total	C	N	O	P		
8	A	1	28	15	2	10	1	0	0

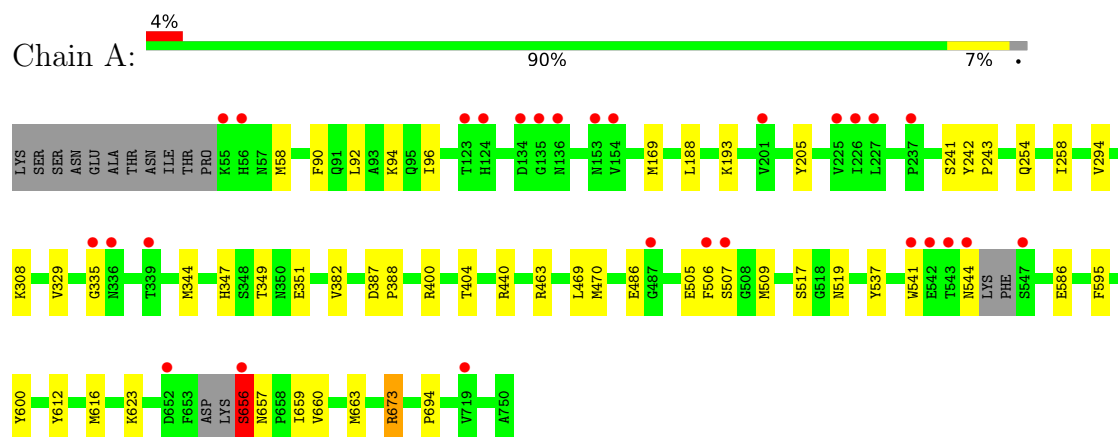
- Molecule 9 is water.

Mol	Chain	Residues	Atoms		ZeroOcc	AltConf
9	A	544	Total	O	0	0
			544	544		

3 Residue-property plots [i](#)

These plots are drawn for all protein, RNA, DNA and oligosaccharide chains in the entry. The first graphic for a chain summarises the proportions of the various outlier classes displayed in the second graphic. The second graphic shows the sequence view annotated by issues in geometry and electron density. Residues are color-coded according to the number of geometric quality criteria for which they contain at least one outlier: green = 0, yellow = 1, orange = 2 and red = 3 or more. A red dot above a residue indicates a poor fit to the electron density ($RSRZ > 2$). Stretches of 2 or more consecutive residues without any outlier are shown as a green connector. Residues present in the sample, but not in the model, are shown in grey.

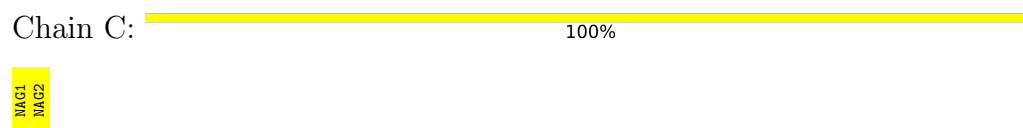
- Molecule 1: Glutamate carboxypeptidase 2



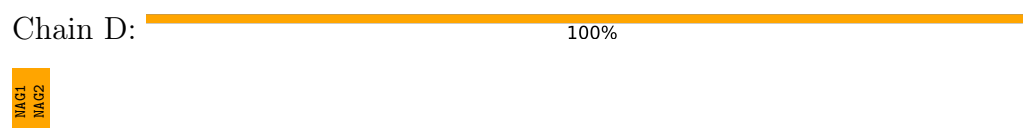
- Molecule 2: 2-acetamido-2-deoxy-beta-D-glucopyranose-(1-4)-2-acetamido-2-deoxy-beta-D-glucopyranose



- Molecule 2: 2-acetamido-2-deoxy-beta-D-glucopyranose-(1-4)-2-acetamido-2-deoxy-beta-D-glucopyranose



- Molecule 2: 2-acetamido-2-deoxy-beta-D-glucopyranose-(1-4)-2-acetamido-2-deoxy-beta-D-glucopyranose



- Molecule 3: alpha-D-mannopyranose-(1-3)-beta-D-mannopyranose-(1-4)-2-acetamido-2-deoxy-beta-D-glucopyranose-(1-4)-2-acetamido-2-deoxy-beta-D-glucopyranose

Chain E:

100%

MAG1
MAG2
BMA3
MAN4

4 Data and refinement statistics

Property	Value	Source
Space group	I 2 2 2	Depositor
Cell constants a, b, c, α , β , γ	102.31Å 130.46Å 159.66Å 90.00° 90.00° 90.00°	Depositor
Resolution (Å)	29.69 – 1.87 29.69 – 1.86	Depositor EDS
% Data completeness (in resolution range)	99.1 (29.69-1.87) 99.1 (29.69-1.86)	Depositor EDS
R_{merge}	(Not available)	Depositor
R_{sym}	(Not available)	Depositor
$\langle I/\sigma(I) \rangle$ ¹	3.11 (at 1.87Å)	Xtriage
Refinement program	REFMAC 5.5.0109	Depositor
R, R_{free}	0.152 , 0.170 0.152 , 0.170	Depositor DCC
R_{free} test set	1305 reflections (1.47%)	wwPDB-VP
Wilson B-factor (Å ²)	25.8	Xtriage
Anisotropy	0.014	Xtriage
Bulk solvent k_{sol} (e/Å ³), B_{sol} (Å ²)	0.35 , 57.1	EDS
L-test for twinning ²	$\langle L \rangle = 0.50$, $\langle L^2 \rangle = 0.33$	Xtriage
Estimated twinning fraction	No twinning to report.	Xtriage
F_o, F_c correlation	0.97	EDS
Total number of atoms	6548	wwPDB-VP
Average B, all atoms (Å ²)	30.0	wwPDB-VP

Xtriage's analysis on translational NCS is as follows: *The largest off-origin peak in the Patterson function is 4.07% of the height of the origin peak. No significant pseudotranslation is detected.*

¹Intensities estimated from amplitudes.

²Theoretical values of $\langle |L| \rangle$, $\langle L^2 \rangle$ for acentric reflections are 0.5, 0.333 respectively for untwinned datasets, and 0.375, 0.2 for perfectly twinned datasets.

5 Model quality

5.1 Standard geometry

Bond lengths and bond angles in the following residue types are not validated in this section: 2G5, MAN, NAG, CL, BMA, ZN, CA

The Z score for a bond length (or angle) is the number of standard deviations the observed value is removed from the expected value. A bond length (or angle) with $|Z| > 5$ is considered an outlier worth inspection. RMSZ is the root-mean-square of all Z scores of the bond lengths (or angles).

Mol	Chain	Bond lengths		Bond angles	
		RMSZ	$\# Z > 5$	RMSZ	$\# Z > 5$
1	A	0.92	0/6016	0.75	2/8145 (0.0%)

Chiral center outliers are detected by calculating the chiral volume of a chiral center and verifying if the center is modelled as a planar moiety or with the opposite hand. A planarity outlier is detected by checking planarity of atoms in a peptide group, atoms in a mainchain group or atoms of a sidechain that are expected to be planar.

Mol	Chain	#Chirality outliers	#Planarity outliers
1	A	0	2

There are no bond length outliers.

All (2) bond angle outliers are listed below:

Mol	Chain	Res	Type	Atoms	Z	Observed(°)	Ideal(°)
1	A	673	ARG	NE-CZ-NH1	5.48	123.04	120.30
1	A	440	ARG	NE-CZ-NH2	-5.22	117.69	120.30

There are no chirality outliers.

All (2) planarity outliers are listed below:

Mol	Chain	Res	Type	Group
1	A	656	SER	Mainchain

5.2 Too-close contacts

In the following table, the Non-H and H(model) columns list the number of non-hydrogen atoms and hydrogen atoms in the chain respectively. The H(added) column lists the number of hydrogen atoms added and optimized by MolProbity. The Clashes column lists the number of clashes within the asymmetric unit, whereas Symm-Clashes lists symmetry-related clashes.

Mol	Chain	Non-H	H(model)	H(added)	Clashes	Symm-Clashes
1	A	5796	0	5643	30	0
2	B	28	0	25	3	0
2	C	28	0	25	0	0
2	D	28	0	25	2	0
3	E	50	0	43	0	0
4	A	42	0	39	1	0
5	A	2	0	0	0	0
6	A	1	0	0	0	0
7	A	1	0	0	0	0
8	A	28	0	15	0	0
9	A	544	0	0	12	0
All	All	6548	0	5815	36	0

The all-atom clashscore is defined as the number of clashes found per 1000 atoms (including hydrogen atoms). The all-atom clashscore for this structure is 3.

All (36) close contacts within the same asymmetric unit are listed below, sorted by their clash magnitude.

Atom-1	Atom-2	Interatomic distance (Å)	Clash overlap (Å)
1:A:90:PHE:CE2	1:A:94:LYS:HE2	2.23	0.73
1:A:541:TRP:HA	1:A:544:ASN:ND2	2.03	0.73
1:A:656:SER:HB3	9:A:901:HOH:O	1.88	0.72
9:A:1201:HOH:O	2:B:2:NAG:H81	1.96	0.65
1:A:58:MET:CE	1:A:586:GLU:HG2	2.27	0.65
1:A:623:LYS:NZ	9:A:904:HOH:O	2.30	0.65
9:A:1380:HOH:O	2:B:2:NAG:H83	2.05	0.57
1:A:58:MET:HE1	1:A:586:GLU:HG2	1.86	0.57
1:A:656:SER:O	9:A:901:HOH:O	2.18	0.56
4:A:803:NAG:H83	9:A:1172:HOH:O	2.06	0.54
1:A:657[B]:ASN:HB3	1:A:660[B]:VAL:HB	1.88	0.54
1:A:349[B]:THR:HG23	1:A:351[B]:GLU:HG3	1.92	0.52
1:A:612:TYR:CZ	1:A:616:MET:HG3	2.46	0.50
1:A:90:PHE:CZ	1:A:94:LYS:HE2	2.46	0.50
1:A:659[B]:ILE:O	1:A:663[B]:MET:HG3	2.13	0.49
9:A:1173:HOH:O	2:D:2:NAG:H83	2.13	0.48
1:A:92:LEU:O	1:A:96[A]:ILE:HG12	2.14	0.47
1:A:347:HIS:HE1	9:A:1264:HOH:O	1.99	0.45
1:A:169:MET:HA	1:A:344:MET:O	2.17	0.45
9:A:1201:HOH:O	2:B:2:NAG:C8	2.60	0.45
1:A:486[B]:GLU:H	1:A:486[B]:GLU:HG2	1.57	0.45
1:A:400:ARG:O	1:A:404[B]:THR:HG23	2.16	0.45
1:A:517:SER:HB2	1:A:694:PRO:HG3	1.99	0.45

Continued on next page...

Continued from previous page...

Atom-1	Atom-2	Interatomic distance (Å)	Clash overlap (Å)
1:A:463[A]:ARG:NH1	9:A:1436:HOH:O	2.50	0.45
1:A:58:MET:HE2	1:A:586:GLU:HG2	1.98	0.44
1:A:659[B]:ILE:HD13	1:A:659[B]:ILE:HA	1.72	0.44
1:A:308:LYS:HB2	9:A:1429:HOH:O	2.19	0.42
1:A:469:LEU:O	1:A:595:PHE:HA	2.19	0.42
1:A:188:LEU:HD21	1:A:329[A]:VAL:HG11	2.01	0.42
1:A:258:ILE:HD13	1:A:294:VAL:HB	2.02	0.42
1:A:387:ASP:HA	1:A:388:PRO:HA	1.92	0.42
1:A:205:TYR:CE1	1:A:254:GLN:HB3	2.54	0.41
1:A:470[B]:MET:HB2	1:A:470[B]:MET:HE3	1.96	0.41
9:A:1202:HOH:O	2:D:1:NAG:H83	2.21	0.41
1:A:242:TYR:CG	1:A:243:PRO:HA	2.57	0.40
1:A:506:PHE:HB2	1:A:509:MET:HG3	2.03	0.40

There are no symmetry-related clashes.

5.3 Torsion angles [i](#)

5.3.1 Protein backbone [i](#)

In the following table, the Percentiles column shows the percent Ramachandran outliers of the chain as a percentile score with respect to all X-ray entries followed by that with respect to entries of similar resolution.

The Analysed column shows the number of residues for which the backbone conformation was analysed, and the total number of residues.

Mol	Chain	Analysed	Favoured	Allowed	Outliers	Percentiles	
1	A	731/707 (103%)	716 (98%)	13 (2%)	2 (0%)	41	30

All (2) Ramachandran outliers are listed below:

Mol	Chain	Res	Type
1	A	335	GLY
1	A	382	VAL

5.3.2 Protein sidechains [i](#)

In the following table, the Percentiles column shows the percent sidechain outliers of the chain as a percentile score with respect to all X-ray entries followed by that with respect to entries of similar

resolution.

The Analysed column shows the number of residues for which the sidechain conformation was analysed, and the total number of residues.

Mol	Chain	Analysed	Rotameric	Outliers	Percentiles	
1	A	634/603 (105%)	625 (99%)	9 (1%)	67	62

All (9) residues with a non-rotameric sidechain are listed below:

Mol	Chain	Res	Type
1	A	193	LYS
1	A	241	SER
1	A	505	GLU
1	A	507	SER
1	A	519	ASN
1	A	537	TYR
1	A	600	TYR
1	A	656	SER
1	A	673	ARG

Sometimes sidechains can be flipped to improve hydrogen bonding and reduce clashes. All (2) such sidechains are listed below:

Mol	Chain	Res	Type
1	A	303	GLN
1	A	544	ASN

5.3.3 RNA [i](#)

There are no RNA molecules in this entry.

5.4 Non-standard residues in protein, DNA, RNA chains [i](#)

12 non-standard protein/DNA/RNA residues are modelled in this entry.

In the following table, the Counts columns list the number of bonds (or angles) for which Mogul statistics could be retrieved, the number of bonds (or angles) that are observed in the model and the number of bonds (or angles) that are defined in the Chemical Component Dictionary. The Link column lists molecule types, if any, to which the group is linked. The Z score for a bond length (or angle) is the number of standard deviations the observed value is removed from the expected value. A bond length (or angle) with $|Z| > 2$ is considered an outlier worth inspection. RMSZ is the root-mean-square of all Z scores of the bond lengths (or angles).

Mol	Type	Chain	Res	Link	Bond lengths			Bond angles		
					Counts	RMSZ	# Z > 2	Counts	RMSZ	# Z > 2
3	NAG	E	1	1,3	14,14,15	0.75	0	17,19,21	1.34	3 (17%)
4	NAG	A	803	1	14,14,15	0.77	0	17,19,21	1.60	4 (23%)
4	NAG	A	806	1	14,14,15	0.47	0	17,19,21	2.18	2 (11%)
2	NAG	C	2	2	14,14,15	0.62	0	17,19,21	1.09	2 (11%)
4	NAG	A	807	1	14,14,15	0.70	0	17,19,21	1.41	4 (23%)
2	NAG	C	1	1,2	14,14,15	0.65	0	17,19,21	1.38	2 (11%)
2	NAG	D	2	2	14,14,15	0.55	0	17,19,21	1.18	2 (11%)
3	NAG	E	2	3	14,14,15	0.66	1 (7%)	17,19,21	1.38	1 (5%)
2	NAG	D	1	1,2	14,14,15	0.76	1 (7%)	17,19,21	1.00	0
2	NAG	B	1	1,2	14,14,15	0.64	0	17,19,21	1.23	1 (5%)
3	MAN	E	4	3	11,11,12	0.68	0	15,15,17	1.44	1 (6%)
2	NAG	B	2	2	14,14,15	0.69	0	17,19,21	1.36	2 (11%)

In the following table, the Chirals column lists the number of chiral outliers, the number of chiral centers analysed, the number of these observed in the model and the number defined in the Chemical Component Dictionary. Similar counts are reported in the Torsion and Rings columns. '-' means no outliers of that kind were identified.

Mol	Type	Chain	Res	Link	Chirals	Torsions	Rings
3	NAG	E	1	1,3	-	0/6/23/26	0/1/1/1
4	NAG	A	803	1	-	2/6/23/26	0/1/1/1
4	NAG	A	806	1	-	2/6/23/26	0/1/1/1
2	NAG	C	2	2	-	2/6/23/26	0/1/1/1
4	NAG	A	807	1	-	0/6/23/26	0/1/1/1
2	NAG	C	1	1,2	-	0/6/23/26	0/1/1/1
2	NAG	D	2	2	-	2/6/23/26	0/1/1/1
3	NAG	E	2	3	-	2/6/23/26	0/1/1/1
2	NAG	D	1	1,2	-	2/6/23/26	0/1/1/1
2	NAG	B	1	1,2	-	0/6/23/26	0/1/1/1
3	MAN	E	4	3	-	0/2/19/22	0/1/1/1
2	NAG	B	2	2	-	2/6/23/26	0/1/1/1

All (2) bond length outliers are listed below:

Mol	Chain	Res	Type	Atoms	Z	Observed(Å)	Ideal(Å)
2	D	1	NAG	O7-C7	2.06	1.27	1.23
3	E	2	NAG	O5-C1	-2.02	1.40	1.43

All (24) bond angle outliers are listed below:

Mol	Chain	Res	Type	Atoms	Z	Observed(°)	Ideal(°)
4	A	806	NAG	C1-O5-C5	7.90	122.90	112.19
3	E	4	MAN	O5-C5-C6	3.97	113.43	107.20
4	A	803	NAG	O5-C5-C6	3.93	113.37	107.20
3	E	2	NAG	C3-C4-C5	-3.65	103.73	110.24
2	C	1	NAG	C1-O5-C5	3.39	116.79	112.19
3	E	1	NAG	C1-O5-C5	3.30	116.66	112.19
2	B	2	NAG	C2-N2-C7	3.28	127.57	122.90
4	A	807	NAG	C1-O5-C5	3.24	116.59	112.19
2	D	2	NAG	C8-C7-N2	3.03	121.23	116.10
4	A	807	NAG	O5-C5-C6	2.93	111.80	107.20
3	E	1	NAG	O4-C4-C5	-2.41	103.32	109.30
4	A	807	NAG	O3-C3-C4	-2.36	104.90	110.35
2	B	1	NAG	C4-C3-C2	2.33	114.43	111.02
4	A	807	NAG	O5-C1-C2	-2.27	107.70	111.29
2	D	2	NAG	O7-C7-C8	-2.27	117.84	122.06
4	A	803	NAG	C8-C7-N2	2.26	119.93	116.10
4	A	806	NAG	C6-C5-C4	-2.26	107.72	113.00
2	B	2	NAG	C4-C3-C2	2.22	114.27	111.02
2	C	1	NAG	O4-C4-C3	-2.18	105.31	110.35
2	C	2	NAG	O4-C4-C5	2.15	114.64	109.30
4	A	803	NAG	O3-C3-C2	-2.14	105.03	109.47
3	E	1	NAG	O5-C1-C2	-2.08	108.01	111.29
2	C	2	NAG	O5-C5-C6	2.05	110.42	107.20
4	A	803	NAG	C1-C2-N2	-2.02	107.04	110.49

There are no chirality outliers.

All (14) torsion outliers are listed below:

Mol	Chain	Res	Type	Atoms
4	A	806	NAG	C4-C5-C6-O6
2	B	2	NAG	C8-C7-N2-C2
2	B	2	NAG	O7-C7-N2-C2
4	A	803	NAG	C8-C7-N2-C2
4	A	803	NAG	O7-C7-N2-C2
2	D	1	NAG	C8-C7-N2-C2
2	D	1	NAG	O7-C7-N2-C2
2	D	2	NAG	C8-C7-N2-C2
2	D	2	NAG	O7-C7-N2-C2
3	E	2	NAG	C8-C7-N2-C2
3	E	2	NAG	O7-C7-N2-C2
4	A	806	NAG	O5-C5-C6-O6

Continued on next page...

Continued from previous page...

Mol	Chain	Res	Type	Atoms
2	C	2	NAG	C4-C5-C6-O6
2	C	2	NAG	O5-C5-C6-O6

There are no ring outliers.

4 monomers are involved in 6 short contacts:

Mol	Chain	Res	Type	Clashes	Symm-Clashes
4	A	803	NAG	1	0
2	D	2	NAG	1	0
2	D	1	NAG	1	0
2	B	2	NAG	3	0

5.5 Carbohydrates

10 monosaccharides are modelled in this entry.

In the following table, the Counts columns list the number of bonds (or angles) for which Mogul statistics could be retrieved, the number of bonds (or angles) that are observed in the model and the number of bonds (or angles) that are defined in the Chemical Component Dictionary. The Link column lists molecule types, if any, to which the group is linked. The Z score for a bond length (or angle) is the number of standard deviations the observed value is removed from the expected value. A bond length (or angle) with $|Z| > 2$ is considered an outlier worth inspection. RMSZ is the root-mean-square of all Z scores of the bond lengths (or angles).

Mol	Type	Chain	Res	Link	Bond lengths			Bond angles		
					Counts	RMSZ	# $ Z > 2$	Counts	RMSZ	# $ Z > 2$
2	NAG	B	1	1,2	14,14,15	0.64	0	17,19,21	1.23	1 (5%)
2	NAG	B	2	2	14,14,15	0.69	0	17,19,21	1.36	2 (11%)
2	NAG	C	1	1,2	14,14,15	0.65	0	17,19,21	1.38	2 (11%)
2	NAG	C	2	2	14,14,15	0.62	0	17,19,21	1.09	2 (11%)
2	NAG	D	1	1,2	14,14,15	0.76	1 (7%)	17,19,21	1.00	0
2	NAG	D	2	2	14,14,15	0.55	0	17,19,21	1.18	2 (11%)
3	NAG	E	1	1,3	14,14,15	0.75	0	17,19,21	1.34	3 (17%)
3	NAG	E	2	3	14,14,15	0.66	1 (7%)	17,19,21	1.38	1 (5%)
3	BMA	E	3	3	11,11,12	0.64	0	15,15,17	1.11	1 (6%)
3	MAN	E	4	3	11,11,12	0.68	0	15,15,17	1.44	1 (6%)

In the following table, the Chirals column lists the number of chiral outliers, the number of chiral centers analysed, the number of these observed in the model and the number defined in the Chemical Component Dictionary. Similar counts are reported in the Torsion and Rings columns.

'-' means no outliers of that kind were identified.

Mol	Type	Chain	Res	Link	Chirals	Torsions	Rings
2	NAG	B	1	1,2	-	0/6/23/26	0/1/1/1
2	NAG	B	2	2	-	2/6/23/26	0/1/1/1
2	NAG	C	1	1,2	-	0/6/23/26	0/1/1/1
2	NAG	C	2	2	-	2/6/23/26	0/1/1/1
2	NAG	D	1	1,2	-	2/6/23/26	0/1/1/1
2	NAG	D	2	2	-	2/6/23/26	0/1/1/1
3	NAG	E	1	1,3	-	0/6/23/26	0/1/1/1
3	NAG	E	2	3	-	2/6/23/26	0/1/1/1
3	BMA	E	3	3	-	0/2/19/22	0/1/1/1
3	MAN	E	4	3	-	0/2/19/22	0/1/1/1

All (2) bond length outliers are listed below:

Mol	Chain	Res	Type	Atoms	Z	Observed(Å)	Ideal(Å)
2	D	1	NAG	O7-C7	2.06	1.27	1.23
3	E	2	NAG	O5-C1	-2.02	1.40	1.43

All (15) bond angle outliers are listed below:

Mol	Chain	Res	Type	Atoms	Z	Observed(°)	Ideal(°)
3	E	4	MAN	O5-C5-C6	3.97	113.43	107.20
3	E	2	NAG	C3-C4-C5	-3.65	103.73	110.24
2	C	1	NAG	C1-O5-C5	3.39	116.79	112.19
3	E	1	NAG	C1-O5-C5	3.30	116.66	112.19
2	B	2	NAG	C2-N2-C7	3.28	127.57	122.90
2	D	2	NAG	C8-C7-N2	3.03	121.23	116.10
3	E	1	NAG	O4-C4-C5	-2.41	103.32	109.30
2	B	1	NAG	C4-C3-C2	2.33	114.43	111.02
2	D	2	NAG	O7-C7-C8	-2.27	117.84	122.06
2	B	2	NAG	C4-C3-C2	2.22	114.27	111.02
2	C	1	NAG	O4-C4-C3	-2.18	105.31	110.35
2	C	2	NAG	O4-C4-C5	2.15	114.64	109.30
3	E	1	NAG	O5-C1-C2	-2.08	108.01	111.29
2	C	2	NAG	O5-C5-C6	2.05	110.42	107.20
3	E	3	BMA	O3-C3-C2	-2.00	106.16	109.99

There are no chirality outliers.

All (10) torsion outliers are listed below:

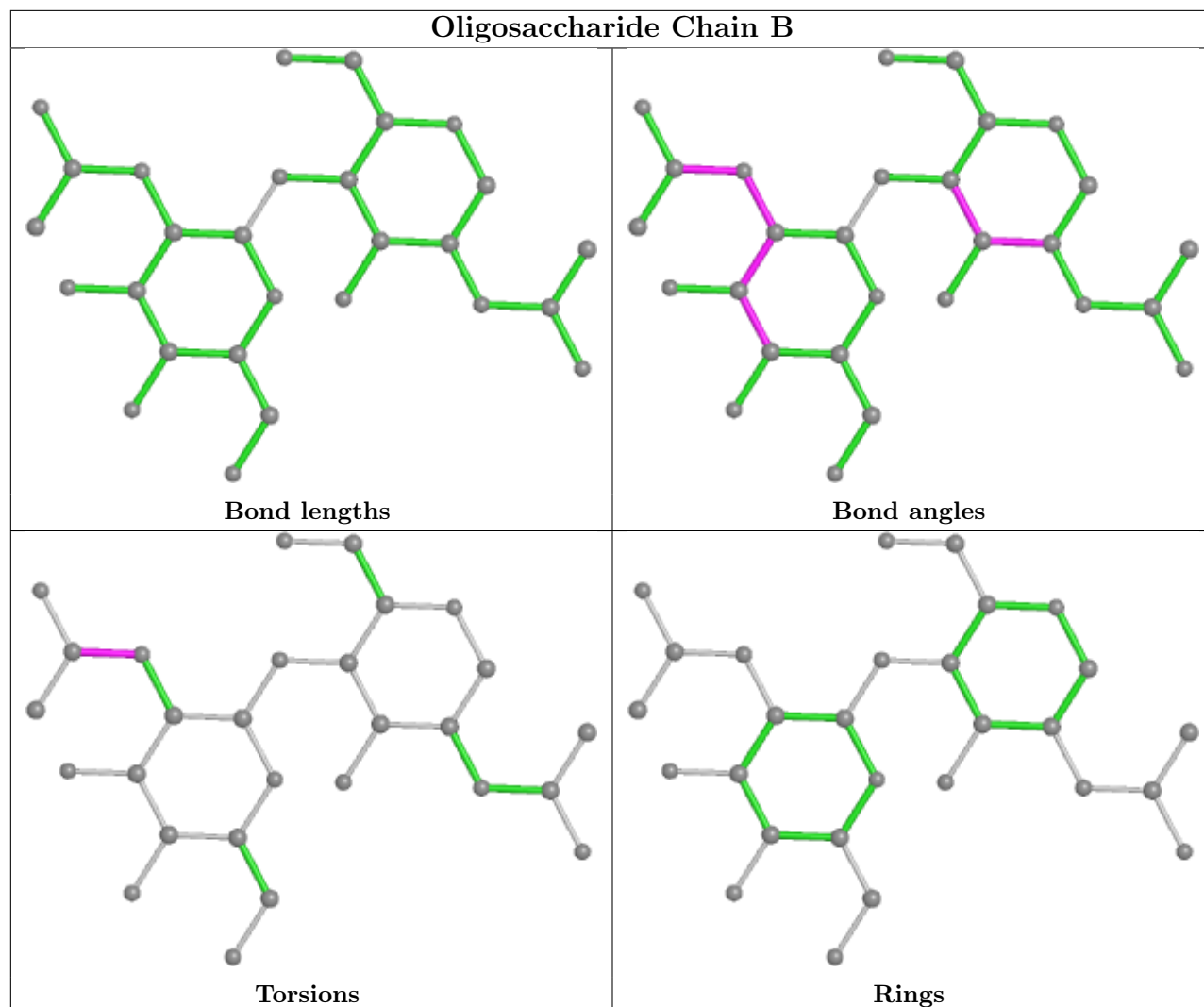
Mol	Chain	Res	Type	Atoms
2	B	2	NAG	C8-C7-N2-C2
2	B	2	NAG	O7-C7-N2-C2
2	D	1	NAG	C8-C7-N2-C2
2	D	1	NAG	O7-C7-N2-C2
2	D	2	NAG	C8-C7-N2-C2
2	D	2	NAG	O7-C7-N2-C2
3	E	2	NAG	C8-C7-N2-C2
3	E	2	NAG	O7-C7-N2-C2
2	C	2	NAG	C4-C5-C6-O6
2	C	2	NAG	O5-C5-C6-O6

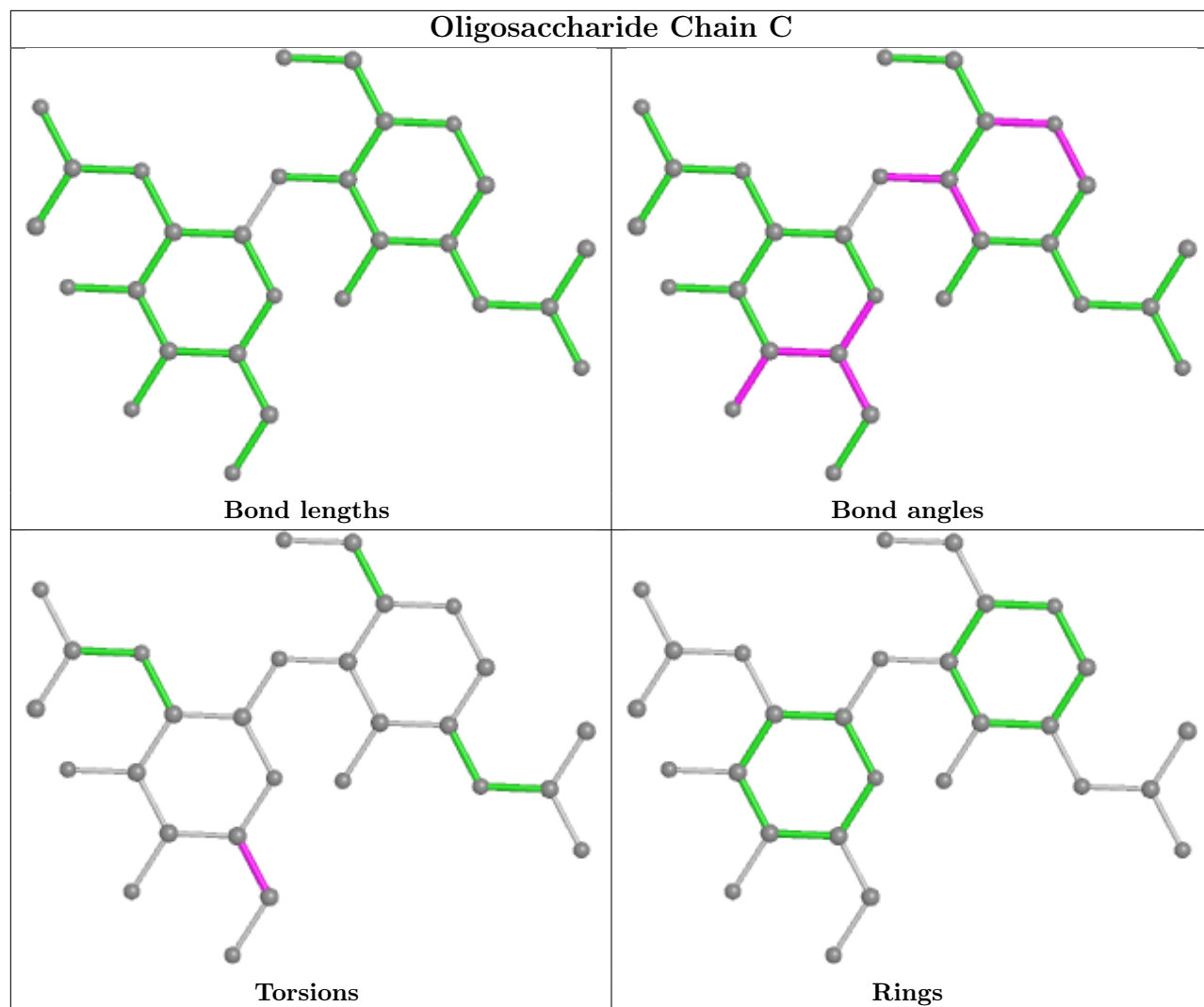
There are no ring outliers.

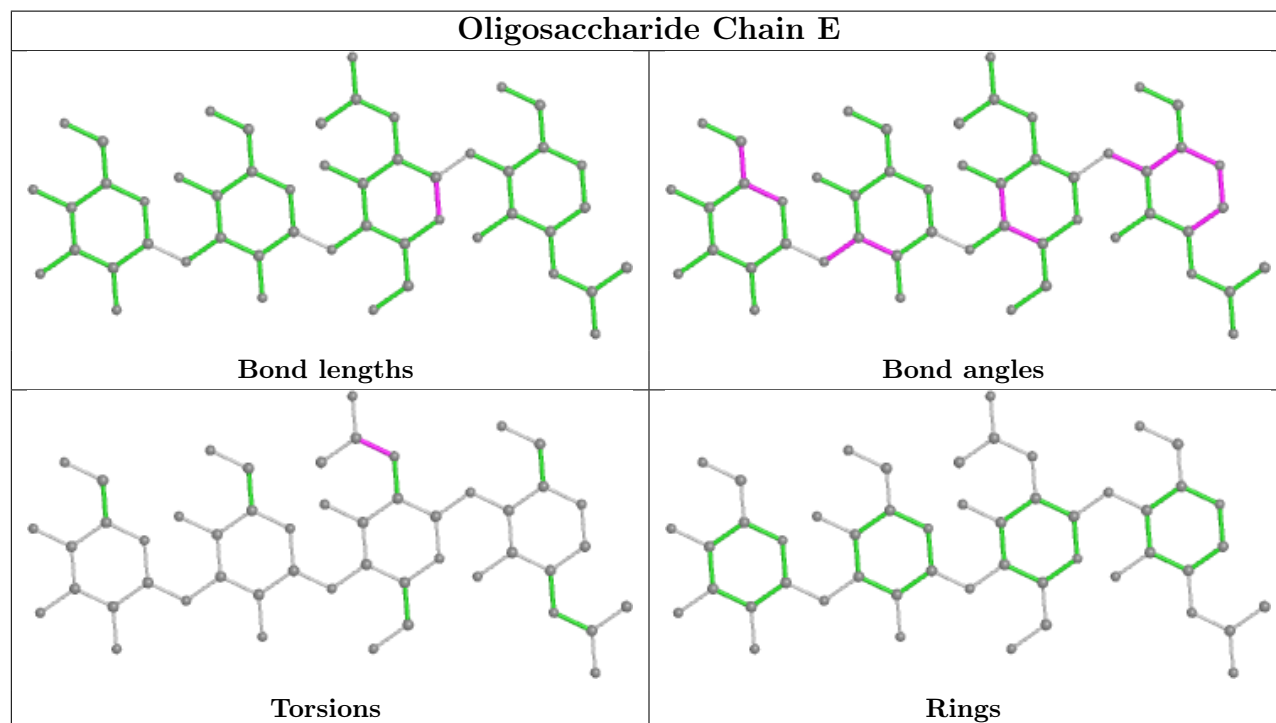
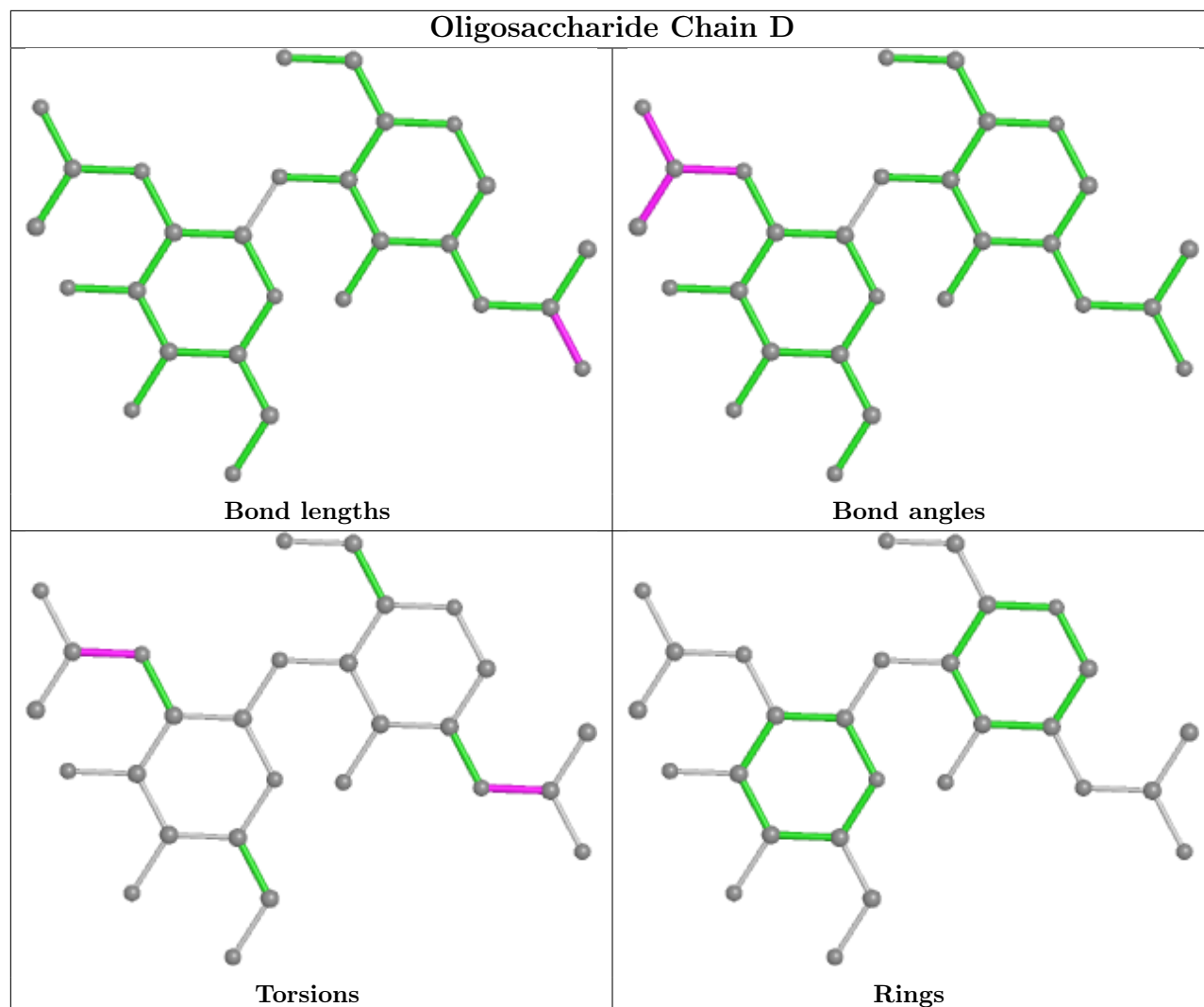
3 monomers are involved in 5 short contacts:

Mol	Chain	Res	Type	Clashes	Symm-Clashes
2	D	2	NAG	1	0
2	D	1	NAG	1	0
2	B	2	NAG	3	0

The following is a two-dimensional graphical depiction of Mogul quality analysis of bond lengths, bond angles, torsion angles, and ring geometry for oligosaccharide.







5.6 Ligand geometry

Of 8 ligands modelled in this entry, 4 are monoatomic - leaving 4 for Mogul analysis.

In the following table, the Counts columns list the number of bonds (or angles) for which Mogul statistics could be retrieved, the number of bonds (or angles) that are observed in the model and the number of bonds (or angles) that are defined in the Chemical Component Dictionary. The Link column lists molecule types, if any, to which the group is linked. The Z score for a bond length (or angle) is the number of standard deviations the observed value is removed from the expected value. A bond length (or angle) with $|Z| > 2$ is considered an outlier worth inspection. RMSZ is the root-mean-square of all Z scores of the bond lengths (or angles).

Mol	Type	Chain	Res	Link	Bond lengths			Bond angles		
					Counts	RMSZ	# $ Z > 2$	Counts	RMSZ	# $ Z > 2$
8	2G5	A	818	5	28,28,28	1.76	7 (25%)	36,38,38	1.34	4 (11%)
4	NAG	A	806	1	14,14,15	0.47	0	17,19,21	2.18	2 (11%)
4	NAG	A	807	1	14,14,15	0.70	0	17,19,21	1.41	4 (23%)
4	NAG	A	803	1	14,14,15	0.77	0	17,19,21	1.60	4 (23%)

In the following table, the Chirals column lists the number of chiral outliers, the number of chiral centers analysed, the number of these observed in the model and the number defined in the Chemical Component Dictionary. Similar counts are reported in the Torsion and Rings columns. '-' means no outliers of that kind were identified.

Mol	Type	Chain	Res	Link	Chirals	Torsions	Rings
8	2G5	A	818	5	-	1/31/32/32	0/1/1/1
4	NAG	A	806	1	-	2/6/23/26	0/1/1/1
4	NAG	A	807	1	-	0/6/23/26	0/1/1/1
4	NAG	A	803	1	-	2/6/23/26	0/1/1/1

All (7) bond length outliers are listed below:

Mol	Chain	Res	Type	Atoms	Z	Observed(Å)	Ideal(Å)
8	A	818	2G5	PBB-OAE	4.50	1.53	1.46
8	A	818	2G5	PBB-N	4.21	1.66	1.61
8	A	818	2G5	CB-CA	2.60	1.59	1.53
8	A	818	2G5	CG-CD	2.48	1.56	1.50
8	A	818	2G5	OAH-CAW	-2.30	1.23	1.30
8	A	818	2G5	PBB-OAI	-2.23	1.50	1.56
8	A	818	2G5	OXT-C	2.16	1.28	1.22

All (14) bond angle outliers are listed below:

Mol	Chain	Res	Type	Atoms	Z	Observed(°)	Ideal(°)
4	A	806	NAG	C1-O5-C5	7.90	122.90	112.19
8	A	818	2G5	PBB-N-CA	-4.17	114.58	123.83
4	A	803	NAG	O5-C5-C6	3.93	113.37	107.20
4	A	807	NAG	C1-O5-C5	3.24	116.59	112.19
4	A	807	NAG	O5-C5-C6	2.93	111.80	107.20
8	A	818	2G5	OAI-PBB-OAE	2.87	115.93	109.92
4	A	807	NAG	O3-C3-C4	-2.36	104.90	110.35
4	A	807	NAG	O5-C1-C2	-2.27	107.70	111.29
8	A	818	2G5	OXT-C-CA	-2.27	114.82	122.26
4	A	803	NAG	C8-C7-N2	2.26	119.93	116.10
4	A	806	NAG	C6-C5-C4	-2.26	107.72	113.00
8	A	818	2G5	OAE-PBB-N	-2.25	109.19	113.04
4	A	803	NAG	O3-C3-C2	-2.14	105.03	109.47
4	A	803	NAG	C1-C2-N2	-2.02	107.04	110.49

There are no chirality outliers.

All (5) torsion outliers are listed below:

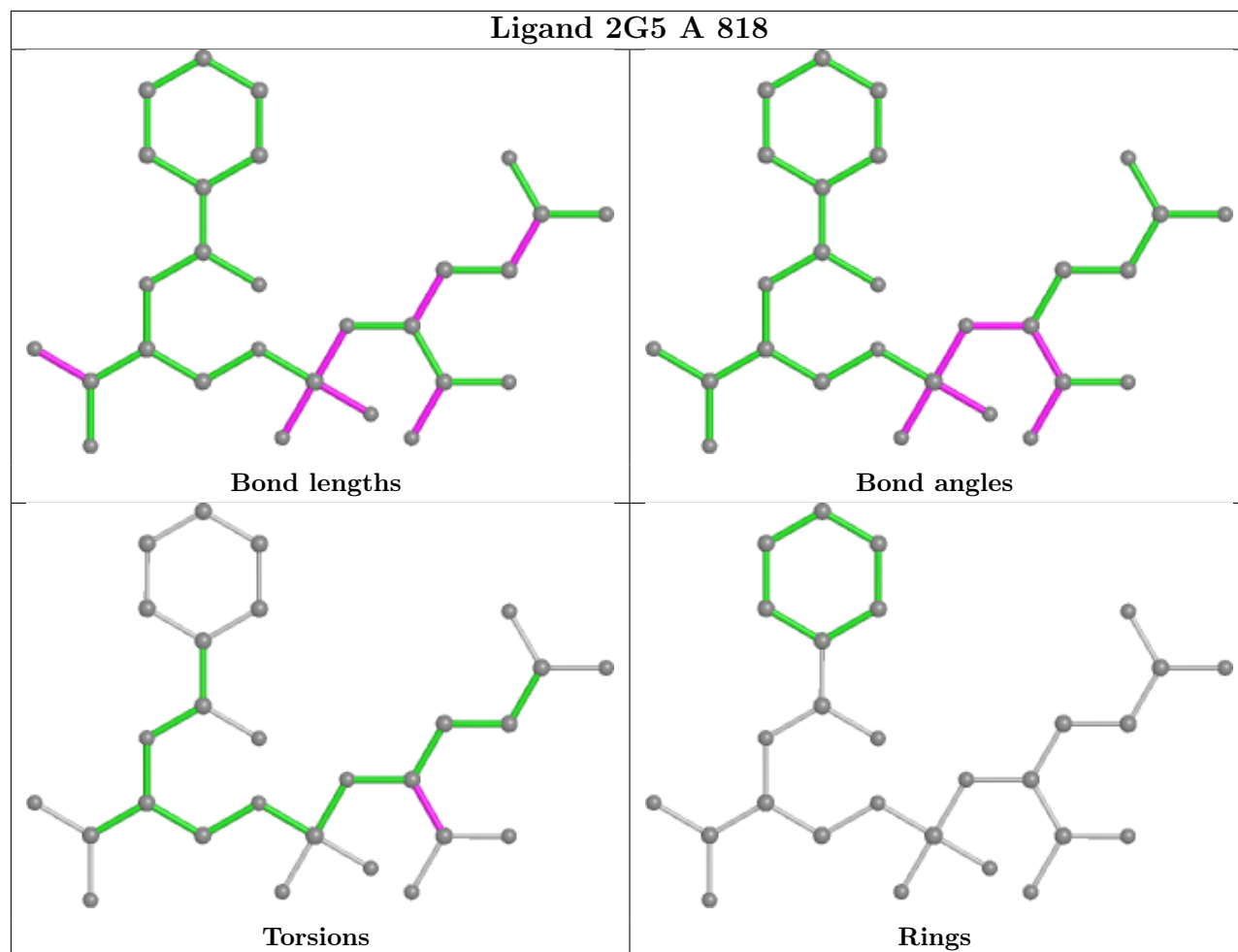
Mol	Chain	Res	Type	Atoms
4	A	806	NAG	C4-C5-C6-O6
4	A	803	NAG	C8-C7-N2-C2
4	A	803	NAG	O7-C7-N2-C2
4	A	806	NAG	O5-C5-C6-O6
8	A	818	2G5	OXT-C-CA-N

There are no ring outliers.

1 monomer is involved in 1 short contact:

Mol	Chain	Res	Type	Clashes	Symm-Clashes
4	A	803	NAG	1	0

The following is a two-dimensional graphical depiction of Mogul quality analysis of bond lengths, bond angles, torsion angles, and ring geometry for all instances of the Ligand of Interest. In addition, ligands with molecular weight > 250 and outliers as shown on the validation Tables will also be included. For torsion angles, if less than 5% of the Mogul distribution of torsion angles is within 10 degrees of the torsion angle in question, then that torsion angle is considered an outlier. Any bond that is central to one or more torsion angles identified as an outlier by Mogul will be highlighted in the graph. For rings, the root-mean-square deviation (RMSD) between the ring in question and similar rings identified by Mogul is calculated over all ring torsion angles. If the average RMSD is greater than 60 degrees and the minimal RMSD between the ring in question and any Mogul-identified rings is also greater than 60 degrees, then that ring is considered an outlier. The outliers are highlighted in purple. The color gray indicates Mogul did not find sufficient equivalents in the CSD to analyse the geometry.



5.7 Other polymers [i](#)

There are no such residues in this entry.

5.8 Polymer linkage issues [i](#)

There are no chain breaks in this entry.

6 Fit of model and data ⓘ

6.1 Protein, DNA and RNA chains ⓘ

In the following table, the column labelled ‘#RSRZ> 2’ contains the number (and percentage) of RSRZ outliers, followed by percent RSRZ outliers for the chain as percentile scores relative to all X-ray entries and entries of similar resolution. The OWAB column contains the minimum, median, 95th percentile and maximum values of the occupancy-weighted average B-factor per residue. The column labelled ‘Q< 0.9’ lists the number of (and percentage) of residues with an average occupancy less than 0.9.

Mol	Chain	Analysed	<RSRZ>	#RSRZ>2	OWAB(Å ²)	Q<0.9
1	A	692/707 (97%)	-0.20	28 (4%) 38 39	15, 27, 48, 77	0

All (28) RSRZ outliers are listed below:

Mol	Chain	Res	Type	RSRZ
1	A	541	TRP	6.7
1	A	543	THR	5.4
1	A	544	ASN	4.0
1	A	55	LYS	3.8
1	A	542	GLU	3.8
1	A	656	SER	3.3
1	A	153	ASN	3.3
1	A	227	LEU	3.0
1	A	652	ASP	3.0
1	A	134	ASP	2.9
1	A	226	ILE	2.8
1	A	123	THR	2.7
1	A	507	SER	2.7
1	A	547	SER	2.6
1	A	336	ASN	2.5
1	A	335	GLY	2.5
1	A	237	PRO	2.5
1	A	136	ASN	2.4
1	A	719	VAL	2.4
1	A	339	THR	2.4
1	A	124	HIS	2.4
1	A	487	GLY	2.3
1	A	225	VAL	2.3
1	A	56	HIS	2.2
1	A	506	PHE	2.2
1	A	135	GLY	2.1
1	A	154	VAL	2.1

Continued on next page...

Continued from previous page...

Mol	Chain	Res	Type	RSRZ
1	A	201	VAL	2.1

6.2 Non-standard residues in protein, DNA, RNA chains [i](#)

In the following table, the Atoms column lists the number of modelled atoms in the group and the number defined in the chemical component dictionary. The B-factors column lists the minimum, median, 95th percentile and maximum values of B factors of atoms in the group. The column labelled 'Q< 0.9' lists the number of atoms with occupancy less than 0.9.

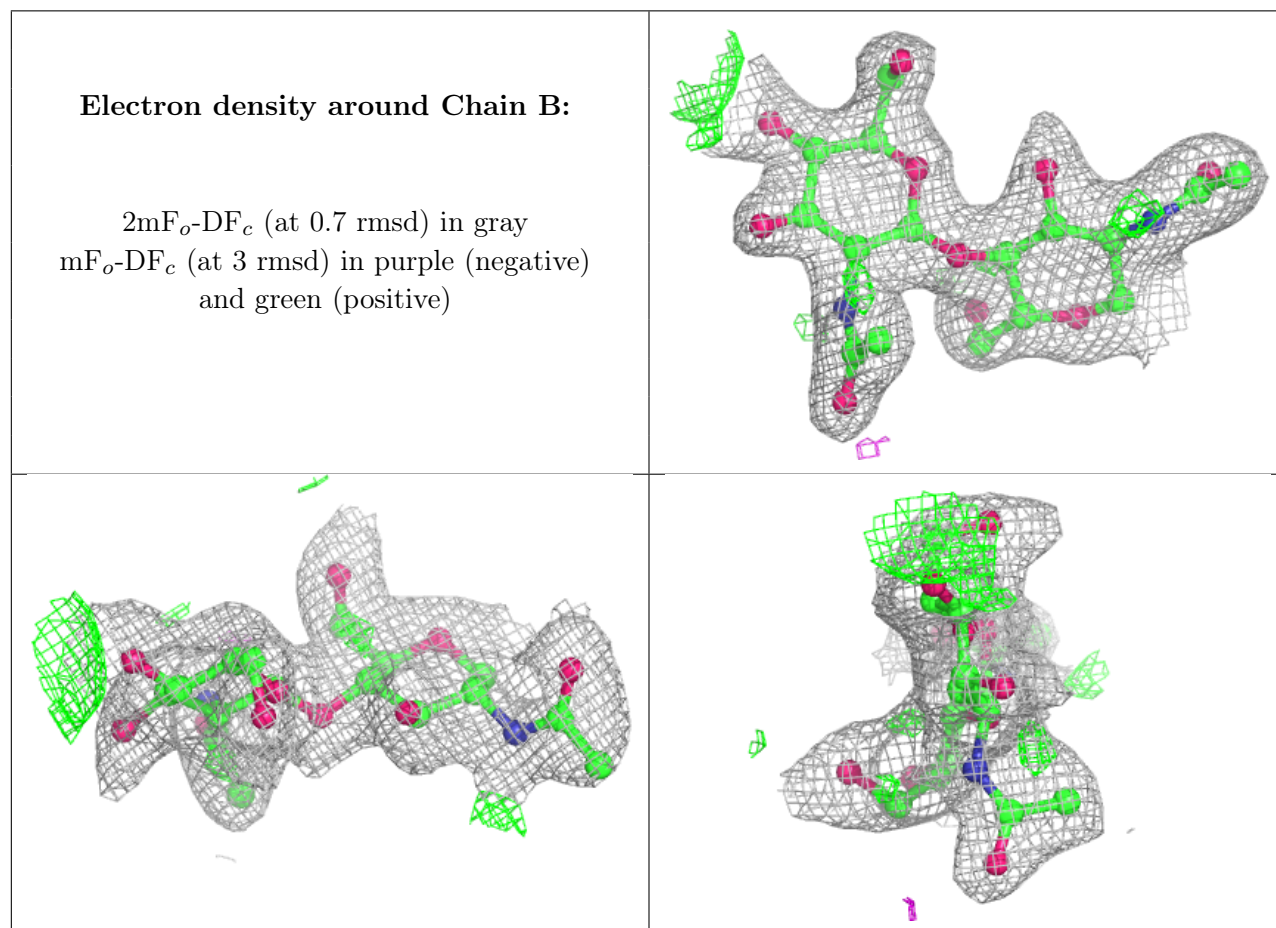
Mol	Type	Chain	Res	Atoms	RSCC	RSR	B-factors(Å ²)	Q<0.9
2	NAG	B	2	14/15	0.80	0.26	43,50,56,56	0
4	NAG	A	803	14/15	0.82	0.28	44,51,58,61	0
2	NAG	C	2	14/15	0.83	0.33	54,59,63,64	0
4	NAG	A	806	14/15	0.86	0.17	65,71,75,76	0
4	NAG	A	807	14/15	0.87	0.16	32,50,54,55	0
2	NAG	C	1	14/15	0.90	0.16	46,50,55,66	0
2	NAG	D	2	14/15	0.90	0.17	40,44,52,53	0
3	NAG	E	2	14/15	0.90	0.22	39,43,51,53	0
3	MAN	E	4	11/12	0.92	0.18	48,50,53,55	0
3	NAG	E	1	14/15	0.94	0.08	22,29,39,46	0
2	NAG	B	1	14/15	0.96	0.10	36,42,47,50	0
2	NAG	D	1	14/15	0.96	0.09	29,33,39,40	0

6.3 Carbohydrates [i](#)

In the following table, the Atoms column lists the number of modelled atoms in the group and the number defined in the chemical component dictionary. The B-factors column lists the minimum, median, 95th percentile and maximum values of B factors of atoms in the group. The column labelled 'Q< 0.9' lists the number of atoms with occupancy less than 0.9.

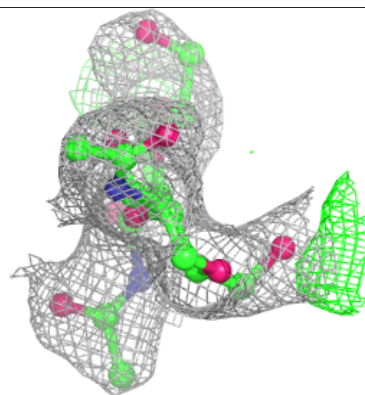
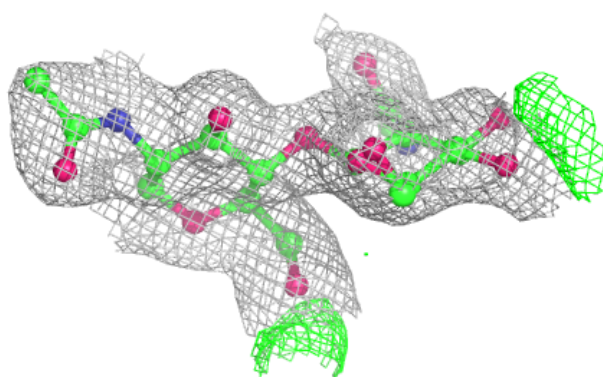
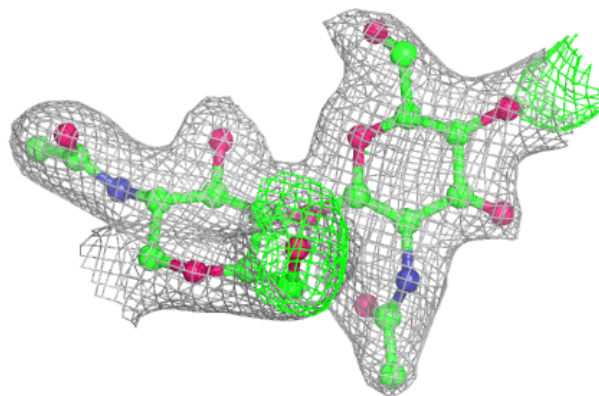
Mol	Type	Chain	Res	Atoms	RSCC	RSR	B-factors(Å ²)	Q<0.9
2	NAG	B	2	14/15	0.80	0.26	43,50,56,56	0
2	NAG	C	2	14/15	0.83	0.33	54,59,63,64	0
3	BMA	E	3	11/12	0.89	0.14	43,45,47,47	0
2	NAG	D	2	14/15	0.90	0.17	40,44,52,53	0
3	NAG	E	2	14/15	0.90	0.22	39,43,51,53	0
2	NAG	C	1	14/15	0.90	0.16	46,50,55,66	0
3	MAN	E	4	11/12	0.92	0.18	48,50,53,55	0
3	NAG	E	1	14/15	0.94	0.08	22,29,39,46	0
2	NAG	D	1	14/15	0.96	0.09	29,33,39,40	0
2	NAG	B	1	14/15	0.96	0.10	36,42,47,50	0

The following is a graphical depiction of the model fit to experimental electron density for oligosaccharide. Each fit is shown from different orientation to approximate a three-dimensional view.



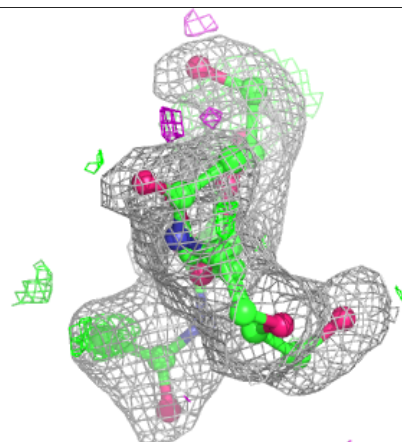
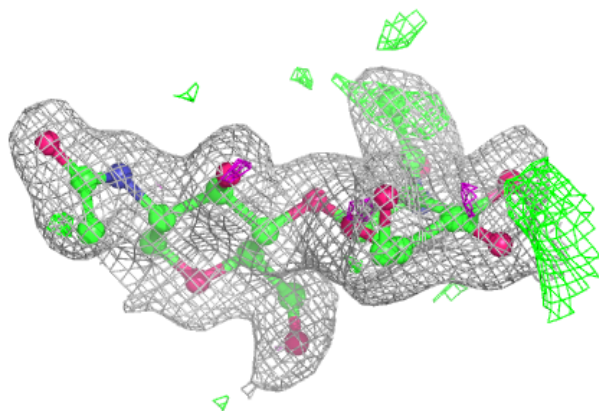
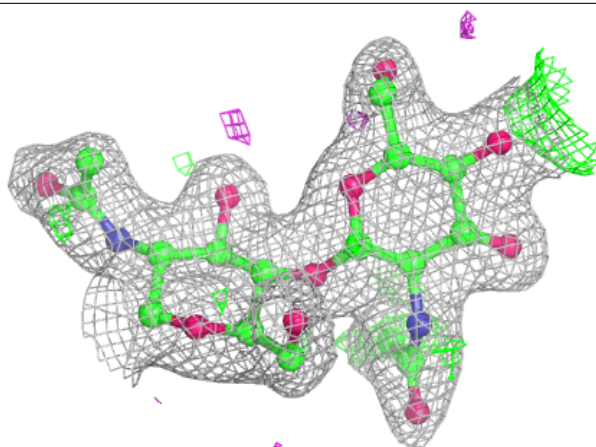
Electron density around Chain C:

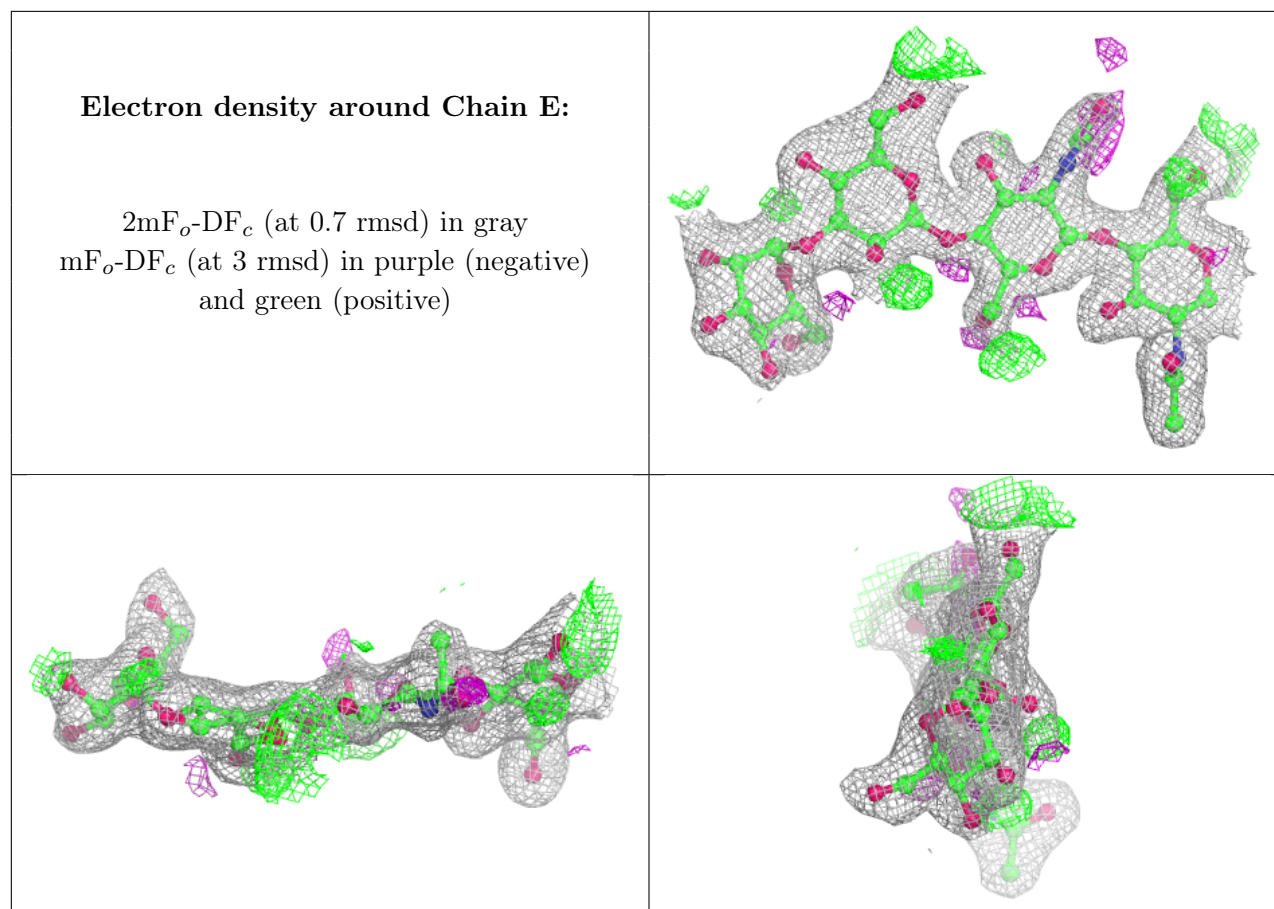
$2mF_o-DF_c$ (at 0.7 rmsd) in gray
 mF_o-DF_c (at 3 rmsd) in purple (negative)
and green (positive)



Electron density around Chain D:

$2mF_o - DF_c$ (at 0.7 rmsd) in gray
 $mF_o - DF_c$ (at 3 rmsd) in purple (negative)
and green (positive)





6.4 Ligands [i](#)

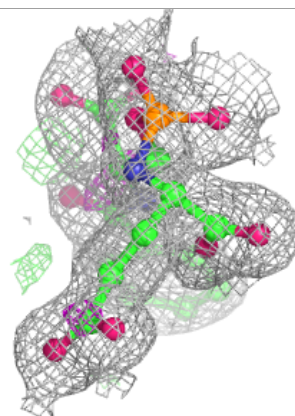
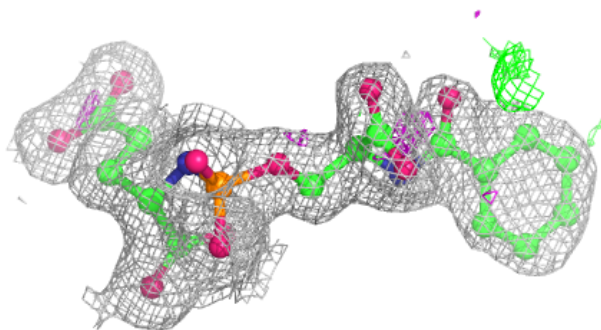
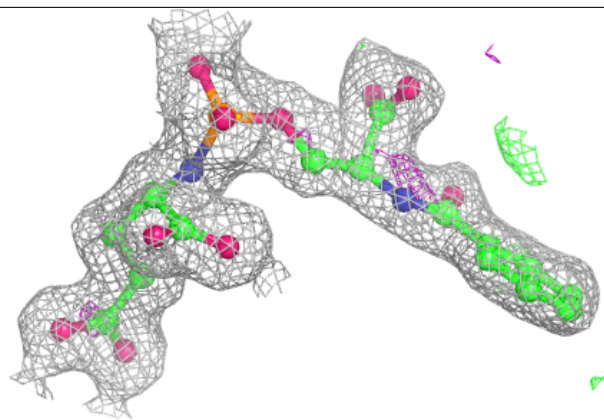
In the following table, the Atoms column lists the number of modelled atoms in the group and the number defined in the chemical component dictionary. The B-factors column lists the minimum, median, 95th percentile and maximum values of B factors of atoms in the group. The column labelled 'Q< 0.9' lists the number of atoms with occupancy less than 0.9.

Mol	Type	Chain	Res	Atoms	RSCC	RSR	B-factors(\AA^2)	Q<0.9
4	NAG	A	803	14/15	0.82	0.28	44,51,58,61	0
4	NAG	A	806	14/15	0.86	0.17	65,71,75,76	0
4	NAG	A	807	14/15	0.87	0.16	32,50,54,55	0
8	2G5	A	818	28/28	0.97	0.10	18,21,44,46	0
5	ZN	A	815	1/1	1.00	0.07	20,20,20,20	0
6	CA	A	816	1/1	1.00	0.08	17,17,17,17	0
7	CL	A	817	1/1	1.00	0.09	25,25,25,25	0
5	ZN	A	814	1/1	1.00	0.06	20,20,20,20	0

The following is a graphical depiction of the model fit to experimental electron density of all instances of the Ligand of Interest. In addition, ligands with molecular weight > 250 and outliers as shown on the geometry validation Tables will also be included. Each fit is shown from different orientation to approximate a three-dimensional view.

Electron density around 2G5 A 818:

$2mF_o-DF_c$ (at 0.7 rmsd) in gray
 mF_o-DF_c (at 3 rmsd) in purple (negative)
and green (positive)



6.5 Other polymers [i](#)

There are no such residues in this entry.