



# Full wwPDB X-ray Structure Validation Report ⓘ

Jun 24, 2024 – 11:14 PM EDT

PDB ID : 6PCB  
Title : Crystal structure of beta-ketoadipyl-CoA thiolase mutant (H356A) in complex with COA  
Authors : Sukritee, B.; Panjikar, S.  
Deposited on : 2019-06-17  
Resolution : 1.61 Å(reported)

This is a Full wwPDB X-ray Structure Validation Report for a publicly released PDB entry.

We welcome your comments at [validation@mail.wwpdb.org](mailto:validation@mail.wwpdb.org)

A user guide is available at

<https://www.wwpdb.org/validation/2017/XrayValidationReportHelp>

with specific help available everywhere you see the ⓘ symbol.

The types of validation reports are described at

<http://www.wwpdb.org/validation/2017/FAQs#types>.

---

The following versions of software and data (see [references ⓘ](#)) were used in the production of this report:

MolProbity	:	4.02b-467
Mogul	:	1.8.5 (274361), CSD as541be (2020)
Xtriage (Phenix)	:	1.13
EDS	:	2.37.1
buster-report	:	1.1.7 (2018)
Percentile statistics	:	20191225.v01 (using entries in the PDB archive December 25th 2019)
Refmac	:	5.8.0158
CCP4	:	7.0.044 (Gargrove)
Ideal geometry (proteins)	:	Engh & Huber (2001)
Ideal geometry (DNA, RNA)	:	Parkinson et al. (1996)
Validation Pipeline (wwPDB-VP)	:	2.37.1

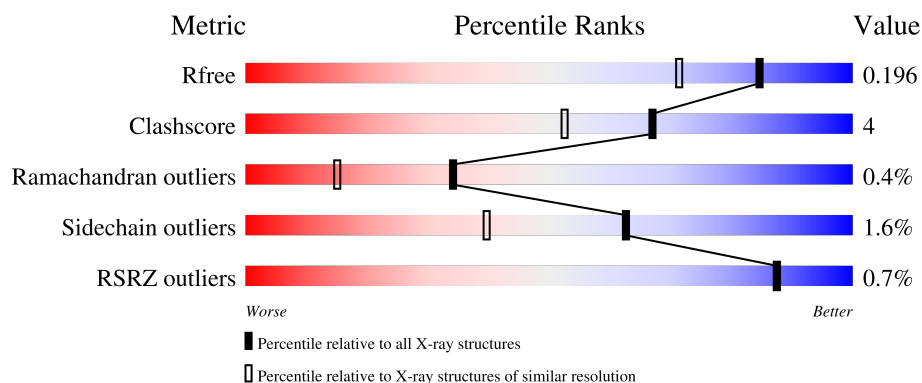
# 1 Overall quality at a glance

The following experimental techniques were used to determine the structure:

## *X-RAY DIFFRACTION*

The reported resolution of this entry is 1.61 Å.

Percentile scores (ranging between 0-100) for global validation metrics of the entry are shown in the following graphic. The table shows the number of entries on which the scores are based.



Metric	Whole archive (#Entries)	Similar resolution (#Entries, resolution range(Å))
$R_{free}$	130704	4693 (1.64-1.60)
Clashscore	141614	5002 (1.64-1.60)
Ramachandran outliers	138981	4888 (1.64-1.60)
Sidechain outliers	138945	4887 (1.64-1.60)
RSRZ outliers	127900	4609 (1.64-1.60)

The table below summarises the geometric issues observed across the polymeric chains and their fit to the electron density. The red, orange, yellow and green segments of the lower bar indicate the fraction of residues that contain outliers for  $\geq 3$ , 2, 1 and 0 types of geometric quality criteria respectively. A grey segment represents the fraction of residues that are not modelled. The numeric value for each fraction is indicated below the corresponding segment, with a dot representing fractions  $\leq 5\%$ . The upper red bar (where present) indicates the fraction of residues that have poor fit to the electron density. The numeric value is given above the bar.

Mol	Chain	Length	Quality of chain
1	A	423	
1	B	423	
1	C	423	
1	D	423	

## 2 Entry composition

There are 5 unique types of molecules in this entry. The entry contains 13458 atoms, of which 0 are hydrogens and 0 are deuteriums.

In the tables below, the ZeroOcc column contains the number of atoms modelled with zero occupancy, the AltConf column contains the number of residues with at least one atom in alternate conformation and the Trace column contains the number of residues modelled with at most 2 atoms.

- Molecule 1 is a protein called Beta-ketoadipyl-CoA thiolase.

Mol	Chain	Residues	Atoms					ZeroOcc	AltConf	Trace
1	A	403	Total	C	N	O	S	0	6	0
			2998	1863	545	570	20			
1	B	397	Total	C	N	O	S	0	9	0
			2982	1854	540	566	22			
1	C	397	Total	C	N	O	S	0	5	0
			2939	1828	530	561	20			
1	D	402	Total	C	N	O	S	0	7	0
			2995	1863	543	570	19			

There are 96 discrepancies between the modelled and reference sequences:

Chain	Residue	Modelled	Actual	Comment	Reference
A	-22	MET	-	initiating methionine	UNP Q88N39
A	-21	HIS	-	expression tag	UNP Q88N39
A	-20	HIS	-	expression tag	UNP Q88N39
A	-19	HIS	-	expression tag	UNP Q88N39
A	-18	HIS	-	expression tag	UNP Q88N39
A	-17	HIS	-	expression tag	UNP Q88N39
A	-16	HIS	-	expression tag	UNP Q88N39
A	-15	SER	-	expression tag	UNP Q88N39
A	-14	SER	-	expression tag	UNP Q88N39
A	-13	GLY	-	expression tag	UNP Q88N39
A	-12	VAL	-	expression tag	UNP Q88N39
A	-11	ASP	-	expression tag	UNP Q88N39
A	-10	LEU	-	expression tag	UNP Q88N39
A	-9	GLY	-	expression tag	UNP Q88N39
A	-8	THR	-	expression tag	UNP Q88N39
A	-7	GLU	-	expression tag	UNP Q88N39
A	-6	ASN	-	expression tag	UNP Q88N39
A	-5	LEU	-	expression tag	UNP Q88N39
A	-4	TYR	-	expression tag	UNP Q88N39
A	-3	HIS	-	expression tag	UNP Q88N39
A	-2	GLN	-	expression tag	UNP Q88N39

*Continued on next page...*

*Continued from previous page...*

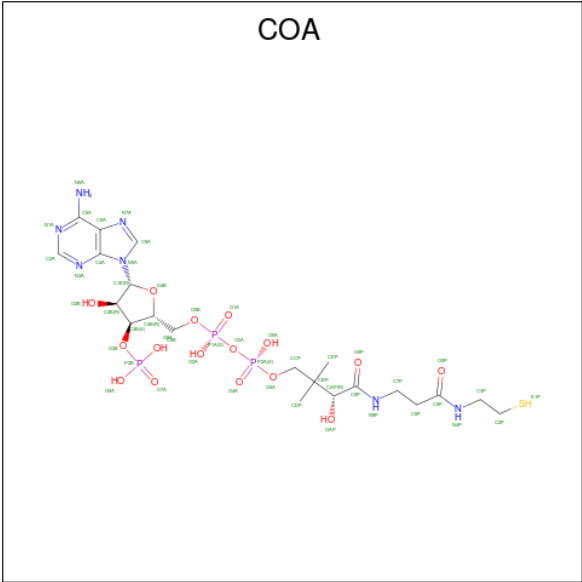
Chain	Residue	Modelled	Actual	Comment	Reference
A	-1	GLY	-	expression tag	UNP Q88N39
A	0	SER	-	expression tag	UNP Q88N39
A	356	ALA	HIS	engineered mutation	UNP Q88N39
B	-22	MET	-	initiating methionine	UNP Q88N39
B	-21	HIS	-	expression tag	UNP Q88N39
B	-20	HIS	-	expression tag	UNP Q88N39
B	-19	HIS	-	expression tag	UNP Q88N39
B	-18	HIS	-	expression tag	UNP Q88N39
B	-17	HIS	-	expression tag	UNP Q88N39
B	-16	HIS	-	expression tag	UNP Q88N39
B	-15	SER	-	expression tag	UNP Q88N39
B	-14	SER	-	expression tag	UNP Q88N39
B	-13	GLY	-	expression tag	UNP Q88N39
B	-12	VAL	-	expression tag	UNP Q88N39
B	-11	ASP	-	expression tag	UNP Q88N39
B	-10	LEU	-	expression tag	UNP Q88N39
B	-9	GLY	-	expression tag	UNP Q88N39
B	-8	THR	-	expression tag	UNP Q88N39
B	-7	GLU	-	expression tag	UNP Q88N39
B	-6	ASN	-	expression tag	UNP Q88N39
B	-5	LEU	-	expression tag	UNP Q88N39
B	-4	TYR	-	expression tag	UNP Q88N39
B	-3	HIS	-	expression tag	UNP Q88N39
B	-2	GLN	-	expression tag	UNP Q88N39
B	-1	GLY	-	expression tag	UNP Q88N39
B	0	SER	-	expression tag	UNP Q88N39
B	356	ALA	HIS	engineered mutation	UNP Q88N39
C	-22	MET	-	initiating methionine	UNP Q88N39
C	-21	HIS	-	expression tag	UNP Q88N39
C	-20	HIS	-	expression tag	UNP Q88N39
C	-19	HIS	-	expression tag	UNP Q88N39
C	-18	HIS	-	expression tag	UNP Q88N39
C	-17	HIS	-	expression tag	UNP Q88N39
C	-16	HIS	-	expression tag	UNP Q88N39
C	-15	SER	-	expression tag	UNP Q88N39
C	-14	SER	-	expression tag	UNP Q88N39
C	-13	GLY	-	expression tag	UNP Q88N39
C	-12	VAL	-	expression tag	UNP Q88N39
C	-11	ASP	-	expression tag	UNP Q88N39
C	-10	LEU	-	expression tag	UNP Q88N39
C	-9	GLY	-	expression tag	UNP Q88N39
C	-8	THR	-	expression tag	UNP Q88N39

*Continued on next page...*

*Continued from previous page...*

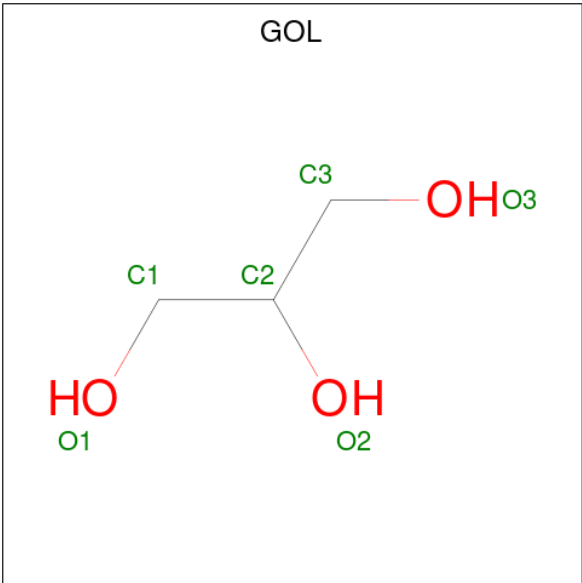
Chain	Residue	Modelled	Actual	Comment	Reference
C	-7	GLU	-	expression tag	UNP Q88N39
C	-6	ASN	-	expression tag	UNP Q88N39
C	-5	LEU	-	expression tag	UNP Q88N39
C	-4	TYR	-	expression tag	UNP Q88N39
C	-3	HIS	-	expression tag	UNP Q88N39
C	-2	GLN	-	expression tag	UNP Q88N39
C	-1	GLY	-	expression tag	UNP Q88N39
C	0	SER	-	expression tag	UNP Q88N39
C	356	ALA	HIS	engineered mutation	UNP Q88N39
D	-22	MET	-	initiating methionine	UNP Q88N39
D	-21	HIS	-	expression tag	UNP Q88N39
D	-20	HIS	-	expression tag	UNP Q88N39
D	-19	HIS	-	expression tag	UNP Q88N39
D	-18	HIS	-	expression tag	UNP Q88N39
D	-17	HIS	-	expression tag	UNP Q88N39
D	-16	HIS	-	expression tag	UNP Q88N39
D	-15	SER	-	expression tag	UNP Q88N39
D	-14	SER	-	expression tag	UNP Q88N39
D	-13	GLY	-	expression tag	UNP Q88N39
D	-12	VAL	-	expression tag	UNP Q88N39
D	-11	ASP	-	expression tag	UNP Q88N39
D	-10	LEU	-	expression tag	UNP Q88N39
D	-9	GLY	-	expression tag	UNP Q88N39
D	-8	THR	-	expression tag	UNP Q88N39
D	-7	GLU	-	expression tag	UNP Q88N39
D	-6	ASN	-	expression tag	UNP Q88N39
D	-5	LEU	-	expression tag	UNP Q88N39
D	-4	TYR	-	expression tag	UNP Q88N39
D	-3	HIS	-	expression tag	UNP Q88N39
D	-2	GLN	-	expression tag	UNP Q88N39
D	-1	GLY	-	expression tag	UNP Q88N39
D	0	SER	-	expression tag	UNP Q88N39
D	356	ALA	HIS	engineered mutation	UNP Q88N39

- Molecule 2 is COENZYME A (three-letter code: COA) (formula:  $C_{21}H_{36}N_7O_{16}P_3S$ ) (labeled as "Ligand of Interest" by depositor).



Mol	Chain	Residues	Atoms						ZeroOcc	AltConf
2	A	1	Total 48	C 21	N 7	O 16	P 3	S 1	0	0
2	B	1	Total 48	C 21	N 7	O 16	P 3	S 1	0	0
2	C	1	Total 48	C 21	N 7	O 16	P 3	S 1	0	0
2	D	1	Total 48	C 21	N 7	O 16	P 3	S 1	0	0

- Molecule 3 is GLYCEROL (three-letter code: GOL) (formula: C<sub>3</sub>H<sub>8</sub>O<sub>3</sub>) (labeled as "Ligand of Interest" by depositor).



Mol	Chain	Residues	Atoms	ZeroOcc	AltConf
3	A	1	Total C O 6 3 3	0	0
3	B	1	Total C O 6 3 3	0	0
3	C	1	Total C O 6 3 3	0	0
3	D	1	Total C O 6 3 3	0	0

- Molecule 4 is CHLORIDE ION (three-letter code: CL) (formula: Cl) (labeled as "Ligand of Interest" by depositor).

Mol	Chain	Residues	Atoms	ZeroOcc	AltConf
4	A	1	Total Cl 1 1	0	0
4	B	1	Total Cl 1 1	0	0
4	C	1	Total Cl 1 1	0	0
4	D	2	Total Cl 2 2	0	0


- Molecule 5 is water.

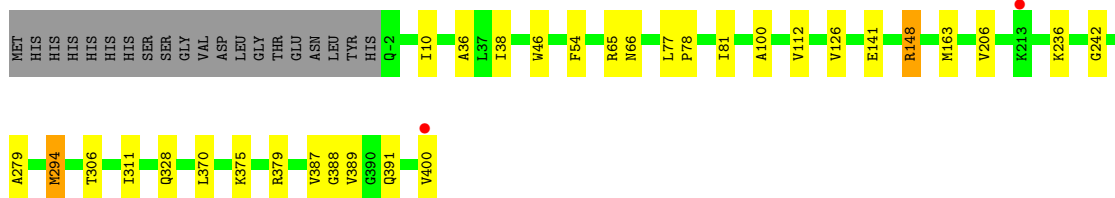
Mol	Chain	Residues	Atoms	ZeroOcc	AltConf
5	A	302	Total O 302 302	0	0
5	B	318	Total O 318 318	0	0
5	C	357	Total O 357 357	0	0
5	D	346	Total O 346 346	0	0

### 3 Residue-property plots [i](#)


These plots are drawn for all protein, RNA, DNA and oligosaccharide chains in the entry. The first graphic for a chain summarises the proportions of the various outlier classes displayed in the second graphic. The second graphic shows the sequence view annotated by issues in geometry and electron density. Residues are color-coded according to the number of geometric quality criteria for which they contain at least one outlier: green = 0, yellow = 1, orange = 2 and red = 3 or more. A red dot above a residue indicates a poor fit to the electron density ( $RSRZ > 2$ ). Stretches of 2 or more consecutive residues without any outlier are shown as a green connector. Residues present in the sample, but not in the model, are shown in grey.

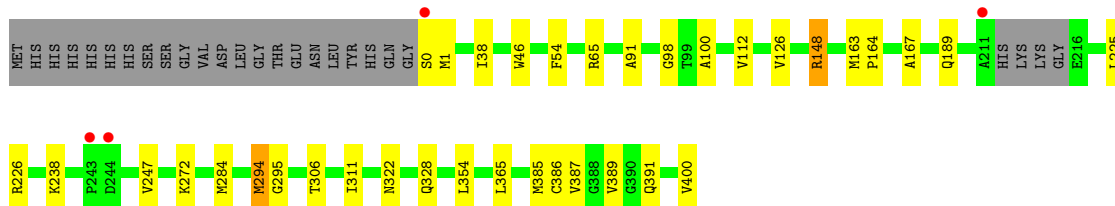
- Molecule 1: Beta-ketoadipyl-CoA thiolase

Chain A: 




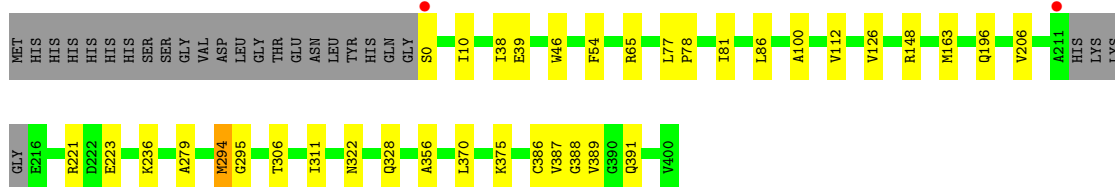
- Molecule 1: Beta-ketoadipyl-CoA thiolase

Chain B: 




- Molecule 1: Beta-ketoadipyl-CoA thiolase

Chain C: 

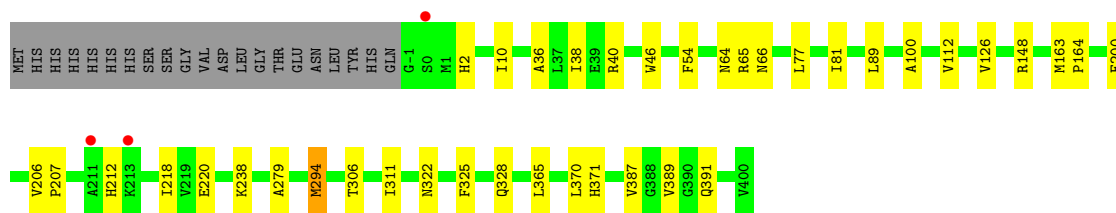


- Molecule 1: Beta-ketoadipyl-CoA thiolase

Chain D: 







## 4 Data and refinement statistics

Property	Value	Source
Space group	P 21 21 21	Depositor
Cell constants a, b, c, $\alpha$ , $\beta$ , $\gamma$	110.49Å 115.96Å 128.87Å 90.00° 90.00° 90.00°	Depositor
Resolution (Å)	20.00 – 1.61 20.00 – 1.61	Depositor EDS
% Data completeness (in resolution range)	99.4 (20.00-1.61) 99.4 (20.00-1.61)	Depositor EDS
$R_{merge}$	0.07	Depositor
$R_{sym}$	(Not available)	Depositor
$\langle I/\sigma(I) \rangle$ <sup>1</sup>	1.33 (at 1.61Å)	Xtriage
Refinement program	REFMAC 5.8.0238	Depositor
R, $R_{free}$	0.161 , 0.196 0.167 , 0.196	Depositor DCC
$R_{free}$ test set	1016 reflections (0.48%)	wwPDB-VP
Wilson B-factor (Å <sup>2</sup> )	17.8	Xtriage
Anisotropy	0.072	Xtriage
Bulk solvent $k_{sol}$ (e/Å <sup>3</sup> ), $B_{sol}$ (Å <sup>2</sup> )	0.37 , 47.1	EDS
L-test for twinning <sup>2</sup>	$\langle  L  \rangle = 0.50$ , $\langle L^2 \rangle = 0.34$	Xtriage
Estimated twinning fraction	0.007 for k,h,-l	Xtriage
$F_o, F_c$ correlation	0.97	EDS
Total number of atoms	13458	wwPDB-VP
Average B, all atoms (Å <sup>2</sup> )	22.0	wwPDB-VP

Xtriage's analysis on translational NCS is as follows: *The largest off-origin peak in the Patterson function is 2.77% of the height of the origin peak. No significant pseudotranslation is detected.*

<sup>1</sup>Intensities estimated from amplitudes.

<sup>2</sup>Theoretical values of  $\langle |L| \rangle$ ,  $\langle L^2 \rangle$  for acentric reflections are 0.5, 0.333 respectively for untwinned datasets, and 0.375, 0.2 for perfectly twinned datasets.

## 5 Model quality

### 5.1 Standard geometry

Bond lengths and bond angles in the following residue types are not validated in this section: CSO, GOL, CL, COA

The Z score for a bond length (or angle) is the number of standard deviations the observed value is removed from the expected value. A bond length (or angle) with  $|Z| > 5$  is considered an outlier worth inspection. RMSZ is the root-mean-square of all Z scores of the bond lengths (or angles).

Mol	Chain	Bond lengths		Bond angles	
		RMSZ	$\# Z  > 5$	RMSZ	$\# Z  > 5$
1	A	0.48	1/3025 (0.0%)	0.76	0/4091
1	B	0.48	0/3007	0.76	0/4065
1	C	0.51	0/2964	0.78	0/4010
1	D	0.50	0/3029	0.77	1/4097 (0.0%)
All	All	0.49	1/12025 (0.0%)	0.77	1/16263 (0.0%)

Chiral center outliers are detected by calculating the chiral volume of a chiral center and verifying if the center is modelled as a planar moiety or with the opposite hand. A planarity outlier is detected by checking planarity of atoms in a peptide group, atoms in a mainchain group or atoms of a sidechain that are expected to be planar.

Mol	Chain	#Chirality outliers	#Planarity outliers
1	A	0	1

All (1) bond length outliers are listed below:

Mol	Chain	Res	Type	Atoms	Z	Observed(Å)	Ideal(Å)
1	A	141	GLU	CD-OE2	-5.71	1.19	1.25

All (1) bond angle outliers are listed below:

Mol	Chain	Res	Type	Atoms	Z	Observed(°)	Ideal(°)
1	D	40	ARG	NE-CZ-NH2	-5.02	117.79	120.30

There are no chirality outliers.

All (1) planarity outliers are listed below:

Mol	Chain	Res	Type	Group
1	A	242	GLY	Peptide

## 5.2 Too-close contacts ⓘ

In the following table, the Non-H and H(model) columns list the number of non-hydrogen atoms and hydrogen atoms in the chain respectively. The H(added) column lists the number of hydrogen atoms added and optimized by MolProbity. The Clashes column lists the number of clashes within the asymmetric unit, whereas Symm-Clashes lists symmetry-related clashes.

Mol	Chain	Non-H	H(model)	H(added)	Clashes	Symm-Clashes
1	A	2998	0	3029	18	0
1	B	2982	0	3007	25	0
1	C	2939	0	2968	30	0
1	D	2995	0	3025	27	0
2	A	48	0	31	0	0
2	B	48	0	31	1	0
2	C	48	0	31	0	0
2	D	48	0	31	0	0
3	A	6	0	8	0	0
3	B	6	0	8	0	0
3	C	6	0	8	0	0
3	D	6	0	8	0	0
4	A	1	0	0	0	0
4	B	1	0	0	1	0
4	C	1	0	0	1	0
4	D	2	0	0	0	0
5	A	302	0	0	1	0
5	B	318	0	0	3	0
5	C	357	0	0	7	0
5	D	346	0	0	2	0
All	All	13458	0	12185	94	0

The all-atom clashscore is defined as the number of clashes found per 1000 atoms (including hydrogen atoms). The all-atom clashscore for this structure is 4.

All (94) close contacts within the same asymmetric unit are listed below, sorted by their clash magnitude.

Atom-1	Atom-2	Interatomic distance (Å)	Clash overlap (Å)
1:C:294[B]:MET:HE2	5:C:755:HOH:O	1.69	0.90
1:D:10:ILE:HG12	1:D:206:VAL:HG13	1.55	0.85
1:D:10:ILE:CG1	1:D:206:VAL:HG13	2.14	0.77
1:B:65[A]:ARG:HD3	4:B:503:CL:CL	2.23	0.76
1:D:325:PHE:H	1:D:328:GLN:HE21	1.36	0.74
1:C:196:GLN:HE22	1:C:221:ARG:HH21	1.39	0.69
1:D:10:ILE:HG12	1:D:206:VAL:CG1	2.23	0.68

*Continued on next page...*

*Continued from previous page...*

Atom-1	Atom-2	Interatomic distance (Å)	Clash overlap (Å)
1:B:189:GLN:HE22	1:B:226[A]:ARG:H	1.40	0.67
1:B:189:GLN:HE22	1:B:226[B]:ARG:H	1.42	0.66
1:C:294[B]:MET:HG3	1:C:295:GLY:N	2.10	0.66
1:D:212:HIS:HE1	5:D:876:HOH:O	1.81	0.63
1:D:207:PRO:HB2	1:D:218:ILE:HG23	1.81	0.61
1:B:306:THR:HB	1:B:311:ILE:O	2.00	0.61
1:C:294[B]:MET:HE1	1:C:388:GLY:HA2	1.83	0.61
1:D:2:HIS:HE1	5:D:891:HOH:O	1.83	0.61
1:A:163:MET:SD	1:A:294[B]:MET:SD	2.99	0.61
1:D:36:ALA:CB	1:D:206:VAL:HG11	2.31	0.60
1:C:294[B]:MET:CE	5:C:755:HOH:O	2.38	0.60
1:B:163:MET:SD	1:B:294[B]:MET:SD	3.02	0.58
1:A:126:VAL:HG12	1:D:126:VAL:HG12	1.86	0.58
1:D:306:THR:HB	1:D:311:ILE:O	2.03	0.58
1:A:148:ARG:NH1	1:D:65[A]:ARG:HD2	2.19	0.57
1:A:379:ARG:HH12	1:A:400:VAL:HB	1.68	0.57
1:B:322:ASN:ND2	1:B:386[A]:CSO:OD	2.37	0.57
1:C:10:ILE:HG12	1:C:206:VAL:HG13	1.86	0.57
1:C:77:LEU:HB3	1:C:81:ILE:HD12	1.86	0.57
1:D:36:ALA:HB1	1:D:206:VAL:HG11	1.87	0.57
1:C:375:LYS:HD2	5:C:877:HOH:O	2.05	0.56
1:C:306:THR:HB	1:C:311:ILE:O	2.04	0.56
1:B:126:VAL:HG12	1:C:126:VAL:HG12	1.86	0.56
1:C:10:ILE:CG1	1:C:206:VAL:HG13	2.36	0.56
1:D:218:ILE:HG22	1:D:220:GLU:HG3	1.88	0.56
1:A:100:ALA:HB1	1:A:112:VAL:HG21	1.89	0.54
1:D:279:ALA:HB2	1:D:370:LEU:HD13	1.89	0.54
1:A:10:ILE:HG12	1:A:206:VAL:HG13	1.89	0.54
1:B:189:GLN:NE2	1:B:226[A]:ARG:H	2.05	0.54
1:A:306:THR:HB	1:A:311:ILE:O	2.09	0.53
1:B:0:SER:HB3	1:C:0:SER:HA	1.90	0.53
1:B:189:GLN:NE2	1:B:226[B]:ARG:H	2.06	0.52
1:C:375:LYS:NZ	5:C:601:HOH:O	2.13	0.52
1:B:163:MET:HB2	1:B:164:PRO:HD3	1.91	0.51
5:B:842:HOH:O	1:C:65[B]:ARG:HD3	2.10	0.51
1:B:387:VAL:HB	1:B:391:GLN:HB2	1.92	0.50
1:B:148:ARG:NH2	1:C:65[A]:ARG:HD2	2.27	0.50
1:D:163:MET:HB2	1:D:164:PRO:HD3	1.92	0.50
1:C:10:ILE:HG12	1:C:206:VAL:CG1	2.42	0.49
1:C:375:LYS:CD	5:C:877:HOH:O	2.61	0.49
1:D:163:MET:SD	1:D:294[B]:MET:SD	3.11	0.49

*Continued on next page...*

*Continued from previous page...*

Atom-1	Atom-2	Interatomic distance (Å)	Clash overlap (Å)
1:A:279:ALA:HB2	1:A:370:LEU:HD13	1.94	0.49
1:A:10:ILE:CG1	1:A:206:VAL:HG13	2.43	0.49
1:B:100:ALA:HB1	1:B:112:VAL:HG21	1.94	0.49
1:C:78:PRO:HD2	1:C:81:ILE:CD1	2.43	0.48
1:D:387:VAL:HB	1:D:391:GLN:HB2	1.95	0.48
1:A:294[B]:MET:SD	1:A:388:GLY:HA2	2.54	0.48
1:C:163:MET:SD	1:C:294[B]:MET:CE	3.01	0.48
1:A:387:VAL:HB	1:A:391:GLN:HB2	1.96	0.47
1:C:322:ASN:ND2	1:C:386[B]:CSO:OD	2.44	0.47
1:B:38:ILE:HA	1:B:46:TRP:CZ2	2.49	0.47
1:A:375:LYS:HA	1:A:375:LYS:HD2	1.54	0.47
1:C:78:PRO:HD2	1:C:81:ILE:HD11	1.96	0.47
1:A:38:ILE:HA	1:A:46:TRP:CZ2	2.49	0.47
1:C:100:ALA:HB1	1:C:112:VAL:HG21	1.97	0.47
1:B:91:ALA:HA	1:B:385[B]:MET:SD	2.55	0.46
1:B:322:ASN:HB2	1:B:365:LEU:HD11	1.98	0.46
1:D:207:PRO:HB2	1:D:218:ILE:CG2	2.46	0.46
1:D:200:PHE:O	1:D:371:HIS:HE1	1.99	0.46
1:C:236:LYS:HD2	5:C:936:HOH:O	2.15	0.45
1:D:38:ILE:HA	1:D:46:TRP:CZ2	2.50	0.45
1:B:226[B]:ARG:NH2	2:B:501:COA:O2B	2.49	0.45
1:C:223:GLU:OE2	5:C:602:HOH:O	2.21	0.45
1:C:38:ILE:HA	1:C:46:TRP:CZ2	2.51	0.45
1:D:100:ALA:HB1	1:D:112:VAL:HG21	1.99	0.45
1:D:322:ASN:HB2	1:D:365:LEU:HD11	1.99	0.44
1:D:64:ASN:OD1	1:D:65[B]:ARG:HB2	2.18	0.44
1:A:65[A]:ARG:HD3	5:A:1334:HOH:O	2.18	0.43
1:B:272:LYS:HE2	5:B:812:HOH:O	2.18	0.43
1:C:387:VAL:HB	1:C:391:GLN:HB2	2.00	0.43
1:D:77:LEU:HB3	1:D:81:ILE:HD12	2.01	0.43
1:C:86:LEU:HD12	1:C:86:LEU:N	2.34	0.42
1:D:238:LYS:HA	1:D:238:LYS:HD2	1.73	0.42
1:A:77:LEU:HB3	1:A:81:ILE:HD12	2.01	0.42
1:A:78:PRO:HD2	1:A:81:ILE:HD12	2.01	0.42
1:B:167:ALA:HB3	1:B:247:VAL:HG21	2.01	0.42
1:C:356:ALA:O	4:C:503:CL:CL	2.75	0.42
1:B:400:VAL:HG23	1:B:400:VAL:O	2.20	0.41
1:B:226[A]:ARG:NH1	5:B:606:HOH:O	2.53	0.41
1:A:36:ALA:HB1	1:A:206:VAL:HG11	2.01	0.41
1:B:295:GLY:HA2	1:B:386[B]:CSO:OD	2.20	0.41
1:D:218:ILE:CG2	1:D:220:GLU:HG3	2.51	0.41

*Continued on next page...*

Continued from previous page...

Atom-1	Atom-2	Interatomic distance (Å)	Clash overlap (Å)
1:B:225:LEU:HD11	1:B:354:LEU:HD23	2.03	0.40
1:C:294[B]:MET:SD	1:C:388:GLY:HA2	2.61	0.40
1:A:65[B]:ARG:HA	1:D:89:LEU:HD21	2.03	0.40
1:C:279:ALA:HB2	1:C:370:LEU:HD13	2.02	0.40
1:B:98:GLY:HA3	1:B:284:MET:SD	2.61	0.40

There are no symmetry-related clashes.

## 5.3 Torsion angles [i](#)

### 5.3.1 Protein backbone [i](#)

In the following table, the Percentiles column shows the percent Ramachandran outliers of the chain as a percentile score with respect to all X-ray entries followed by that with respect to entries of similar resolution.

The Analysed column shows the number of residues for which the backbone conformation was analysed, and the total number of residues.

Mol	Chain	Analysed	Favoured	Allowed	Outliers	Percentiles	
1	A	405/423 (96%)	392 (97%)	11 (3%)	2 (0%)	29	11
1	B	400/423 (95%)	390 (98%)	9 (2%)	1 (0%)	41	21
1	C	396/423 (94%)	382 (96%)	13 (3%)	1 (0%)	41	21
1	D	406/423 (96%)	392 (97%)	12 (3%)	2 (0%)	29	11
All	All	1607/1692 (95%)	1556 (97%)	45 (3%)	6 (0%)	34	15

All (6) Ramachandran outliers are listed below:

Mol	Chain	Res	Type
1	B	389	VAL
1	D	66	ASN
1	A	66	ASN
1	D	389	VAL
1	C	389	VAL
1	A	389	VAL

### 5.3.2 Protein sidechains ⓘ

In the following table, the Percentiles column shows the percent sidechain outliers of the chain as a percentile score with respect to all X-ray entries followed by that with respect to entries of similar resolution.

The Analysed column shows the number of residues for which the sidechain conformation was analysed, and the total number of residues.

Mol	Chain	Analysed	Rotameric	Outliers	Percentiles	
1	A	302/315 (96%)	296 (98%)	6 (2%)	55	29
1	B	301/315 (96%)	294 (98%)	7 (2%)	50	24
1	C	297/315 (94%)	291 (98%)	6 (2%)	55	29
1	D	303/315 (96%)	299 (99%)	4 (1%)	69	49
All	All	1203/1260 (96%)	1180 (98%)	23 (2%)	62	32

All (23) residues with a non-rotameric sidechain are listed below:

Mol	Chain	Res	Type
1	A	54	PHE
1	A	148	ARG
1	A	236	LYS
1	A	294[A]	MET
1	A	294[B]	MET
1	A	328	GLN
1	B	1	MET
1	B	54	PHE
1	B	148	ARG
1	B	238	LYS
1	B	294[A]	MET
1	B	294[B]	MET
1	B	328	GLN
1	C	39	GLU
1	C	54	PHE
1	C	148	ARG
1	C	294[A]	MET
1	C	294[B]	MET
1	C	328	GLN
1	D	54	PHE
1	D	148	ARG
1	D	294[A]	MET
1	D	294[B]	MET



Sometimes sidechains can be flipped to improve hydrogen bonding and reduce clashes. All (8) such sidechains are listed below:

Mol	Chain	Res	Type
1	A	66	ASN
1	A	181	GLN
1	B	66	ASN
1	B	189	GLN
1	B	322	ASN
1	C	196	GLN
1	D	212	HIS
1	D	328	GLN

### 5.3.3 RNA ⓘ

There are no RNA molecules in this entry.

## 5.4 Non-standard residues in protein, DNA, RNA chains ⓘ

7 non-standard protein/DNA/RNA residues are modelled in this entry.

In the following table, the Counts columns list the number of bonds (or angles) for which Mogul statistics could be retrieved, the number of bonds (or angles) that are observed in the model and the number of bonds (or angles) that are defined in the Chemical Component Dictionary. The Link column lists molecule types, if any, to which the group is linked. The Z score for a bond length (or angle) is the number of standard deviations the observed value is removed from the expected value. A bond length (or angle) with  $|Z| > 2$  is considered an outlier worth inspection. RMSZ is the root-mean-square of all Z scores of the bond lengths (or angles).

Mol	Type	Chain	Res	Link	Bond lengths			Bond angles		
					Counts	RMSZ	$\# Z  > 2$	Counts	RMSZ	$\# Z  > 2$
1	CSO	A	386[A]	1	3,6,7	0.73	0	0,6,8	-	-
1	CSO	B	386[B]	1	3,6,7	0.86	0	0,6,8	-	-
1	CSO	C	386[B]	1	3,6,7	0.75	0	0,6,8	-	-
1	CSO	C	386[A]	1	3,6,7	0.74	0	0,6,8	-	-
1	CSO	B	386[A]	1	3,6,7	0.81	0	0,6,8	-	-
1	CSO	D	386	1	3,6,7	0.88	0	0,6,8	-	-
1	CSO	A	386[B]	1	3,6,7	0.86	0	0,6,8	-	-

In the following table, the Chirals column lists the number of chiral outliers, the number of chiral centers analysed, the number of these observed in the model and the number defined in the Chemical Component Dictionary. Similar counts are reported in the Torsion and Rings columns. '-' means no outliers of that kind were identified.

Mol	Type	Chain	Res	Link	Chirals	Torsions	Rings
1	CSO	A	386[A]	1	-	0/1/5/7	-
1	CSO	B	386[B]	1	-	0/1/5/7	-
1	CSO	C	386[B]	1	-	0/1/5/7	-
1	CSO	C	386[A]	1	-	0/1/5/7	-
1	CSO	B	386[A]	1	-	0/1/5/7	-
1	CSO	D	386	1	-	0/1/5/7	-
1	CSO	A	386[B]	1	-	0/1/5/7	-

There are no bond length outliers.

There are no bond angle outliers.

There are no chirality outliers.

There are no torsion outliers.

There are no ring outliers.

3 monomers are involved in 3 short contacts:

Mol	Chain	Res	Type	Clashes	Symm-Clashes
1	B	386[B]	CSO	1	0
1	C	386[B]	CSO	1	0
1	B	386[A]	CSO	1	0

## 5.5 Carbohydrates [i](#)

There are no monosaccharides in this entry.

## 5.6 Ligand geometry [i](#)

Of 13 ligands modelled in this entry, 5 are monoatomic - leaving 8 for Mogul analysis.

In the following table, the Counts columns list the number of bonds (or angles) for which Mogul statistics could be retrieved, the number of bonds (or angles) that are observed in the model and the number of bonds (or angles) that are defined in the Chemical Component Dictionary. The Link column lists molecule types, if any, to which the group is linked. The Z score for a bond length (or angle) is the number of standard deviations the observed value is removed from the expected value. A bond length (or angle) with  $|Z| > 2$  is considered an outlier worth inspection. RMSZ is the root-mean-square of all Z scores of the bond lengths (or angles).

Mol	Type	Chain	Res	Link	Bond lengths			Bond angles		
					Counts	RMSZ	$\# Z  > 2$	Counts	RMSZ	$\# Z  > 2$
3	GOL	C	502	-	5,5,5	0.13	0	5,5,5	0.14	0
3	GOL	D	502	-	5,5,5	0.17	0	5,5,5	0.31	0
3	GOL	B	502	-	5,5,5	0.16	0	5,5,5	0.29	0

Mol	Type	Chain	Res	Link	Bond lengths			Bond angles		
					Counts	RMSZ	# Z  > 2	Counts	RMSZ	# Z  > 2
3	GOL	A	1002	-	5,5,5	0.11	0	5,5,5	0.29	0
2	COA	B	501	1	41,50,50	0.69	1 (2%)	52,75,75	1.01	4 (7%)
2	COA	D	501	1	41,50,50	0.75	1 (2%)	52,75,75	0.98	4 (7%)
2	COA	A	1001	1	41,50,50	0.67	1 (2%)	52,75,75	0.98	3 (5%)
2	COA	C	501	1	41,50,50	0.68	1 (2%)	52,75,75	1.05	3 (5%)

In the following table, the Chirals column lists the number of chiral outliers, the number of chiral centers analysed, the number of these observed in the model and the number defined in the Chemical Component Dictionary. Similar counts are reported in the Torsion and Rings columns. '-' means no outliers of that kind were identified.

Mol	Type	Chain	Res	Link	Chirals	Torsions	Rings
3	GOL	C	502	-	-	0/4/4/4	-
3	GOL	D	502	-	-	0/4/4/4	-
3	GOL	B	502	-	-	0/4/4/4	-
3	GOL	A	1002	-	-	0/4/4/4	-
2	COA	B	501	1	-	3/44/64/64	0/3/3/3
2	COA	D	501	1	-	7/44/64/64	0/3/3/3
2	COA	A	1001	1	-	1/44/64/64	0/3/3/3
2	COA	C	501	1	-	0/44/64/64	0/3/3/3

All (4) bond length outliers are listed below:

Mol	Chain	Res	Type	Atoms	Z	Observed(Å)	Ideal(Å)
2	D	501	COA	P3B-O3B	2.90	1.64	1.59
2	B	501	COA	P3B-O3B	2.53	1.64	1.59
2	C	501	COA	P3B-O3B	2.50	1.64	1.59
2	A	1001	COA	P3B-O3B	2.14	1.63	1.59

All (14) bond angle outliers are listed below:

Mol	Chain	Res	Type	Atoms	Z	Observed(°)	Ideal(°)
2	C	501	COA	O4B-C1B-C2B	-3.81	101.36	106.93
2	A	1001	COA	C5A-C6A-N6A	3.09	125.05	120.35
2	B	501	COA	C7P-N8P-C9P	3.02	127.97	122.59
2	D	501	COA	C5A-C6A-N6A	2.74	124.52	120.35
2	B	501	COA	C5A-C6A-N6A	2.66	124.40	120.35
2	B	501	COA	O4B-C1B-C2B	-2.59	103.14	106.93
2	C	501	COA	C5A-C6A-N6A	2.49	124.14	120.35
2	D	501	COA	O5A-P2A-O4A	2.41	124.16	112.24
2	A	1001	COA	O4B-C1B-C2B	-2.29	103.59	106.93

Continued on next page...

*Continued from previous page...*

Mol	Chain	Res	Type	Atoms	Z	Observed(°)	Ideal(°)
2	D	501	COA	C2P-C3P-N4P	-2.27	107.13	112.31
2	A	1001	COA	O5A-P2A-O4A	2.22	123.20	112.24
2	D	501	COA	O4B-C1B-C2B	-2.18	103.74	106.93
2	B	501	COA	O5A-P2A-O4A	2.11	122.65	112.24
2	C	501	COA	O5A-P2A-O4A	2.10	122.63	112.24

There are no chirality outliers.

All (11) torsion outliers are listed below:

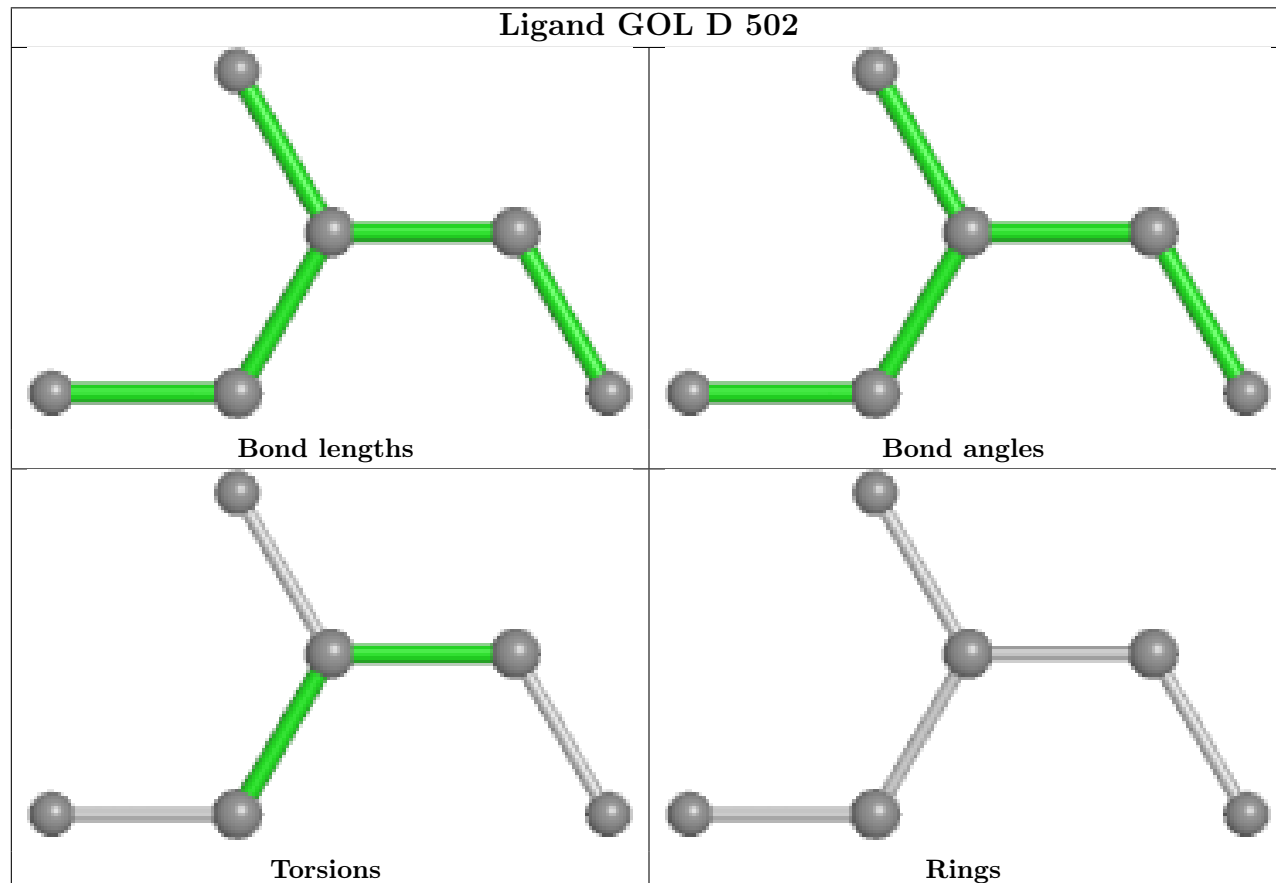
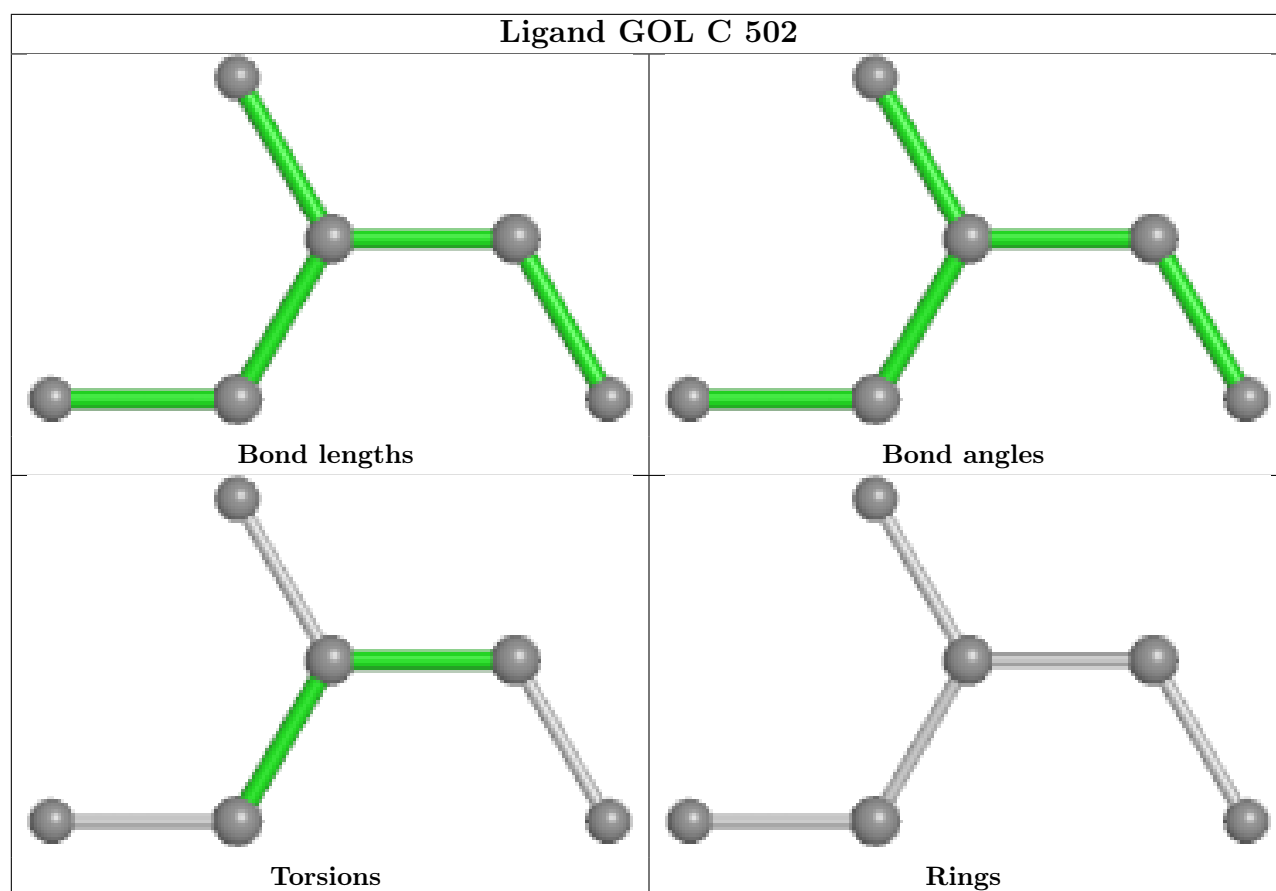
Mol	Chain	Res	Type	Atoms
2	D	501	COA	O4B-C4B-C5B-O5B
2	B	501	COA	O5P-C5P-N4P-C3P
2	D	501	COA	C3B-C4B-C5B-O5B
2	D	501	COA	P2A-O3A-P1A-O5B
2	A	1001	COA	O5P-C5P-N4P-C3P
2	D	501	COA	CAP-CBP-CCP-O6A
2	B	501	COA	CEP-CBP-CCP-O6A
2	D	501	COA	CDP-CBP-CCP-O6A
2	D	501	COA	CEP-CBP-CCP-O6A
2	D	501	COA	O5P-C5P-N4P-C3P
2	B	501	COA	C6P-C5P-N4P-C3P

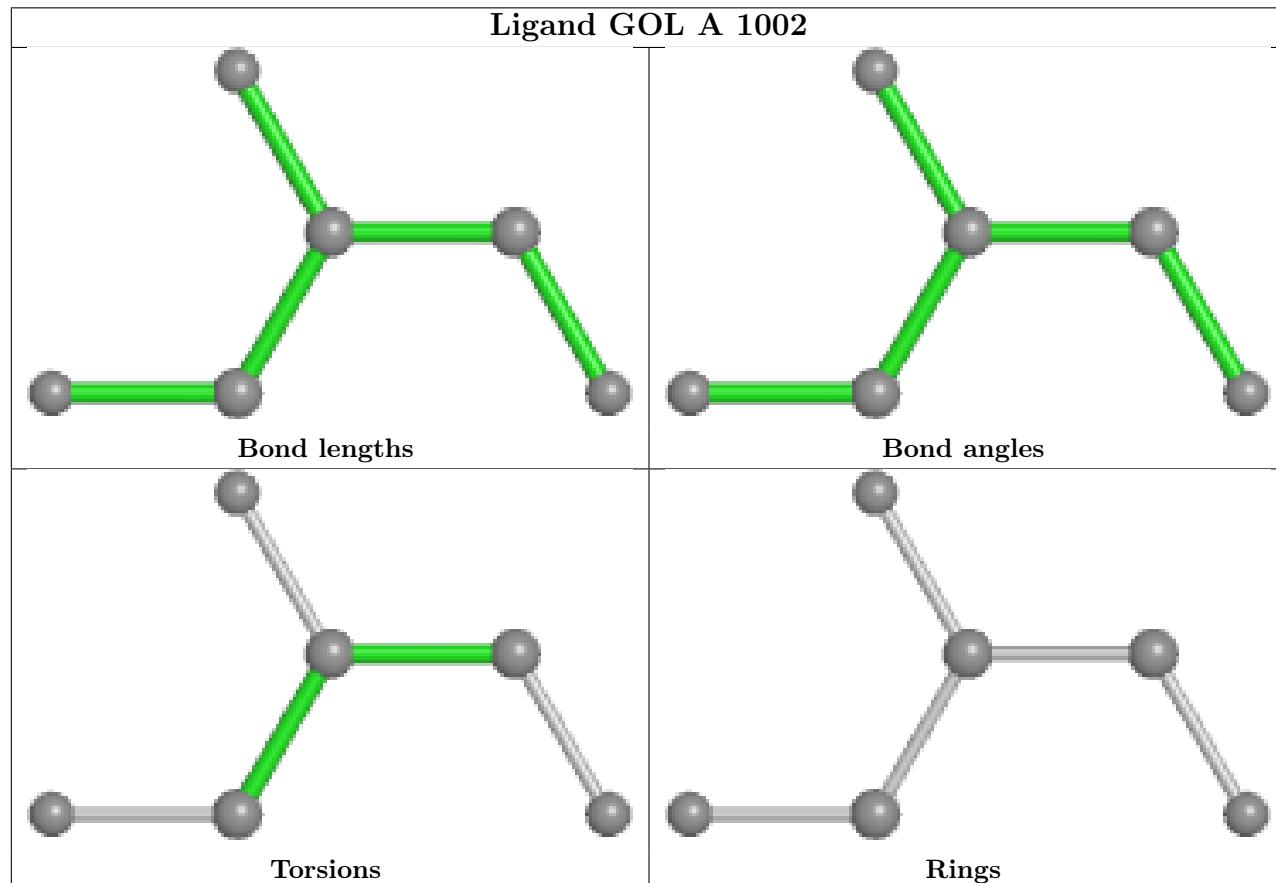
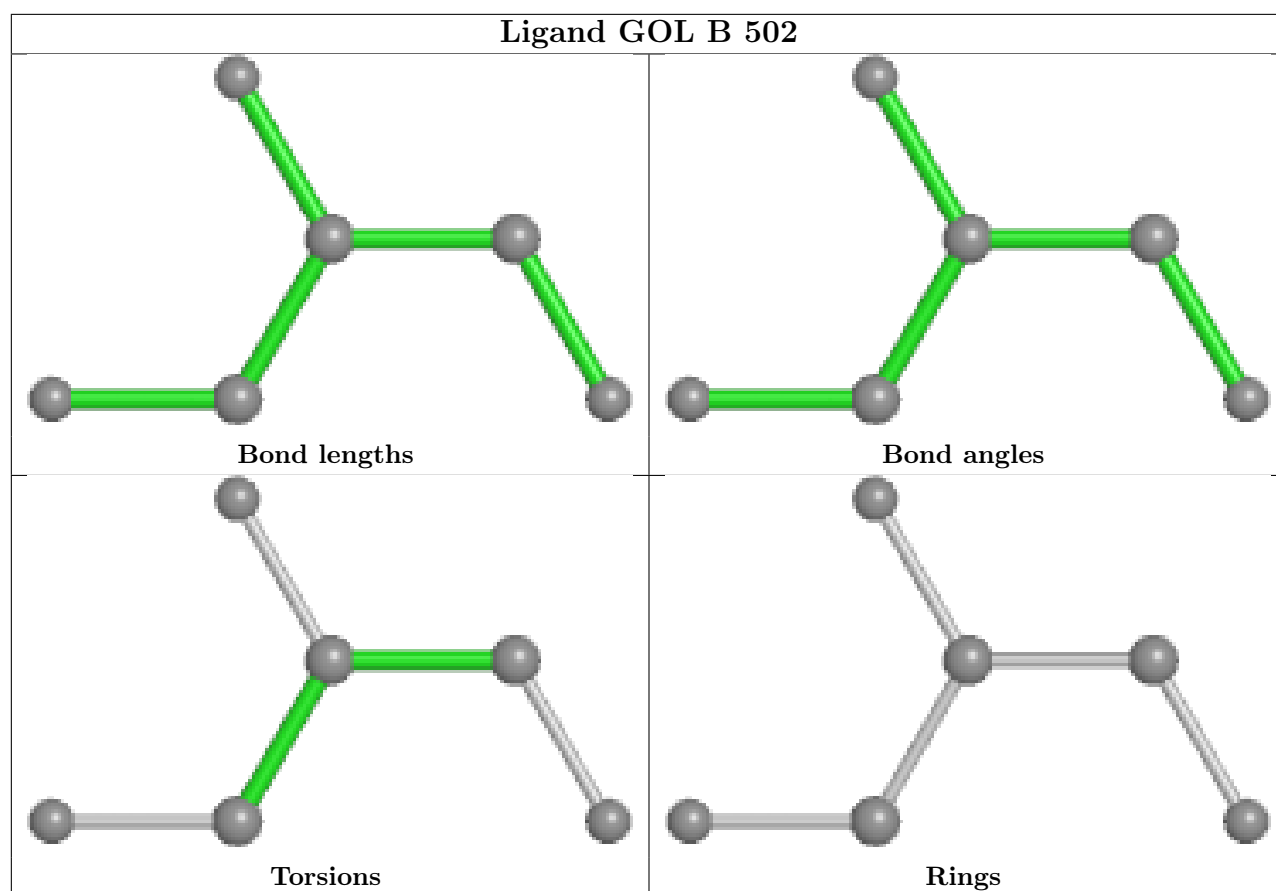
There are no ring outliers.

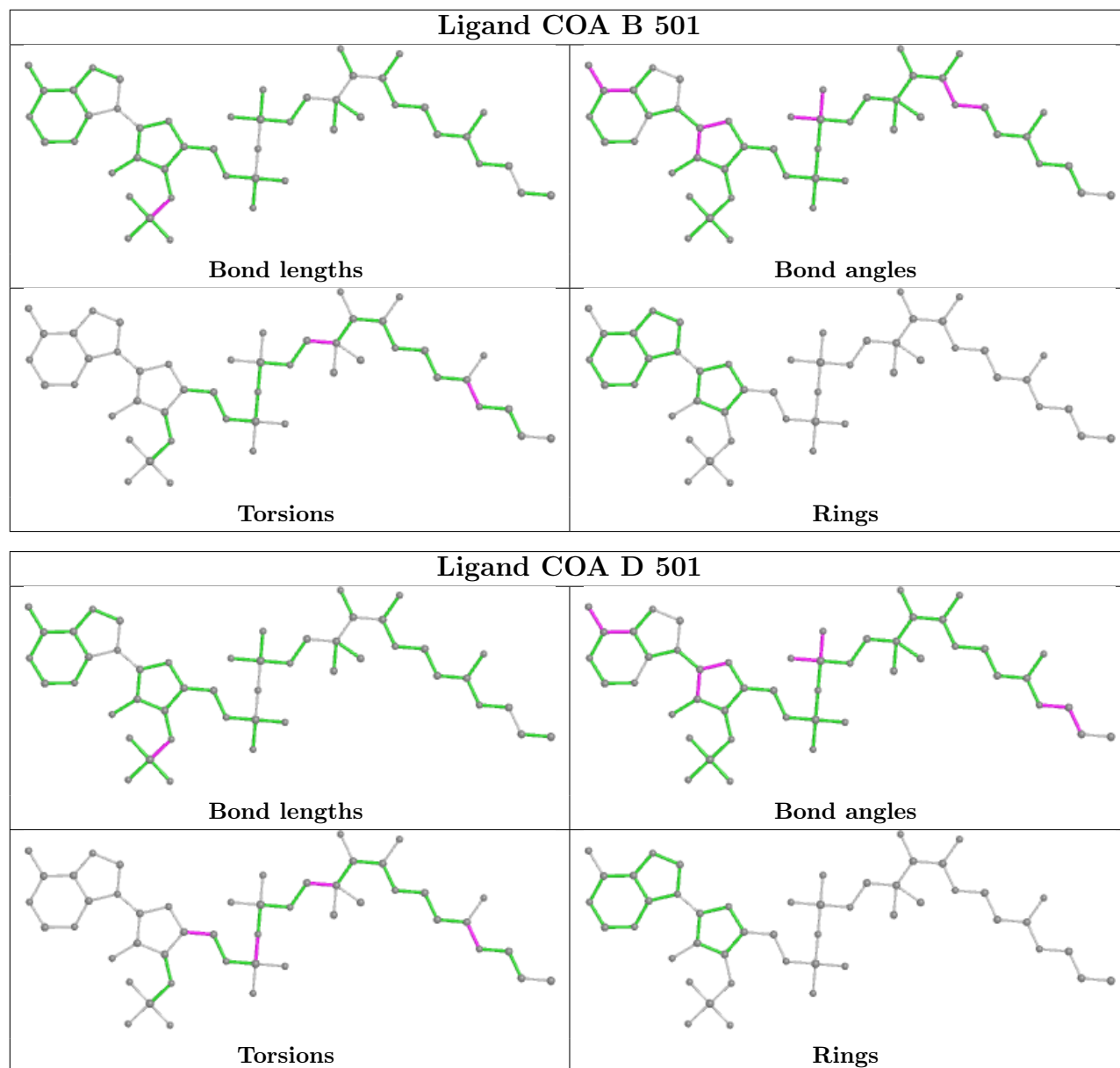
1 monomer is involved in 1 short contact:

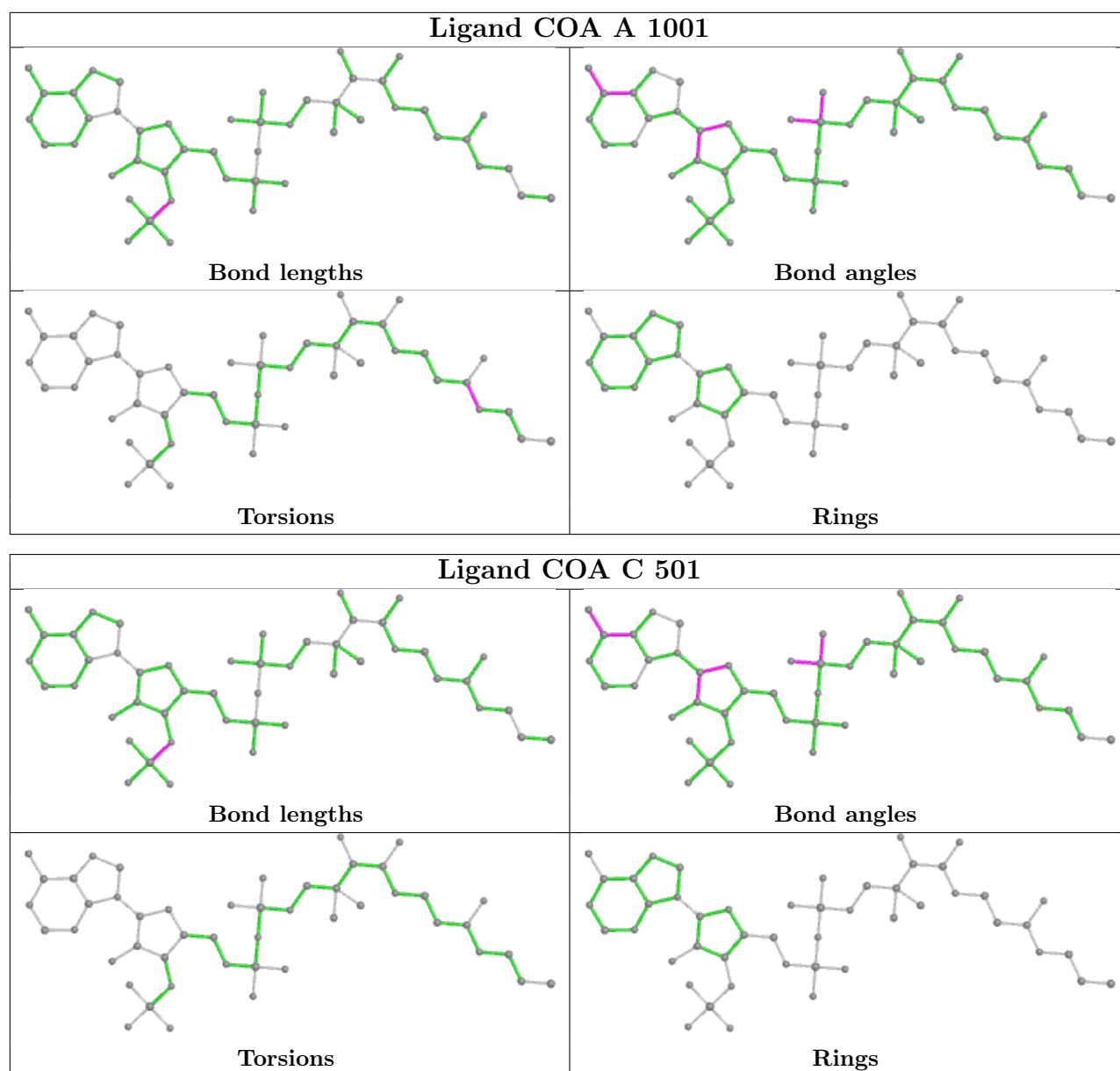
Mol	Chain	Res	Type	Clashes	Symm-Clashes
2	B	501	COA	1	0

The following is a two-dimensional graphical depiction of Mogul quality analysis of bond lengths, bond angles, torsion angles, and ring geometry for all instances of the Ligand of Interest. In addition, ligands with molecular weight > 250 and outliers as shown on the validation Tables will also be included. For torsion angles, if less than 5% of the Mogul distribution of torsion angles is within 10 degrees of the torsion angle in question, then that torsion angle is considered an outlier. Any bond that is central to one or more torsion angles identified as an outlier by Mogul will be highlighted in the graph. For rings, the root-mean-square deviation (RMSD) between the ring in question and similar rings identified by Mogul is calculated over all ring torsion angles. If the average RMSD is greater than 60 degrees and the minimal RMSD between the ring in question and any Mogul-identified rings is also greater than 60 degrees, then that ring is considered an outlier. The outliers are highlighted in purple. The color gray indicates Mogul did not find sufficient equivalents in the CSD to analyse the geometry.









## 5.7 Other polymers [i](#)

There are no such residues in this entry.

## 5.8 Polymer linkage issues [i](#)

There are no chain breaks in this entry.



## 6 Fit of model and data [i](#)

### 6.1 Protein, DNA and RNA chains [i](#)

In the following table, the column labelled ‘#RSRZ> 2’ contains the number (and percentage) of RSRZ outliers, followed by percent RSRZ outliers for the chain as percentile scores relative to all X-ray entries and entries of similar resolution. The OWAB column contains the minimum, median, 95<sup>th</sup> percentile and maximum values of the occupancy-weighted average B-factor per residue. The column labelled ‘Q< 0.9’ lists the number of (and percentage) of residues with an average occupancy less than 0.9.

Mol	Chain	Analysed	<RSRZ>	#RSRZ>2	OWAB(Å <sup>2</sup> )	Q<0.9
1	A	402/423 (95%)	-0.37	2 (0%) 91 90	15, 21, 35, 80	0
1	B	396/423 (93%)	-0.43	4 (1%) 82 82	14, 20, 35, 56	0
1	C	396/423 (93%)	-0.52	2 (0%) 91 90	14, 18, 32, 55	0
1	D	401/423 (94%)	-0.52	3 (0%) 87 87	14, 19, 31, 54	0
All	All	1595/1692 (94%)	-0.46	11 (0%) 87 87	14, 20, 34, 80	0

All (11) RSRZ outliers are listed below:

Mol	Chain	Res	Type	RSRZ
1	A	213	LYS	6.4
1	B	211	ALA	3.5
1	C	0	SER	3.5
1	B	243	PRO	2.8
1	B	0	SER	2.4
1	C	211	ALA	2.3
1	D	213	LYS	2.2
1	D	0	SER	2.2
1	B	244	ASP	2.2
1	D	211	ALA	2.1
1	A	400	VAL	2.0

### 6.2 Non-standard residues in protein, DNA, RNA chains [i](#)

In the following table, the Atoms column lists the number of modelled atoms in the group and the number defined in the chemical component dictionary. The B-factors column lists the minimum, median, 95<sup>th</sup> percentile and maximum values of B factors of atoms in the group. The column labelled ‘Q< 0.9’ lists the number of atoms with occupancy less than 0.9.

Mol	Type	Chain	Res	Atoms	RSCC	RSR	B-factors(Å <sup>2</sup> )	Q<0.9
1	CSO	A	386[A]	7/8	0.98	0.06	17,18,20,21	7

*Continued on next page...*

*Continued from previous page...*

Mol	Type	Chain	Res	Atoms	RSCC	RSR	B-factors( $\text{\AA}^2$ )	Q<0.9
1	CSO	A	386[B]	7/8	0.98	0.06	19,19,22,26	7
1	CSO	D	386	7/8	0.98	0.06	18,19,21,35	0
1	CSO	B	386[B]	7/8	0.99	0.05	17,17,21,24	7
1	CSO	C	386[A]	7/8	0.99	0.06	16,18,21,23	7
1	CSO	C	386[B]	7/8	0.99	0.06	15,16,18,18	7
1	CSO	B	386[A]	7/8	0.99	0.05	17,17,19,20	7

## 6.3 Carbohydrates [i](#)

There are no monosaccharides in this entry.

## 6.4 Ligands [i](#)

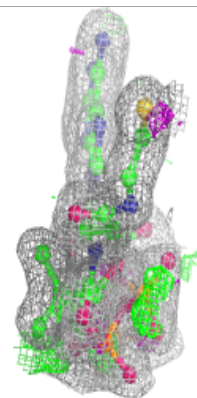
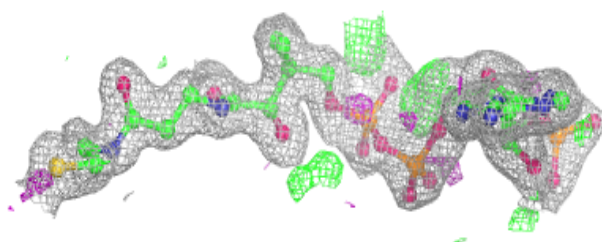
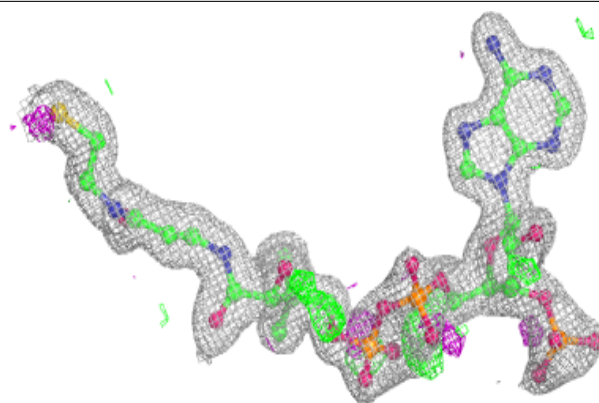
In the following table, the Atoms column lists the number of modelled atoms in the group and the number defined in the chemical component dictionary. The B-factors column lists the minimum, median, 95<sup>th</sup> percentile and maximum values of B factors of atoms in the group. The column labelled 'Q< 0.9' lists the number of atoms with occupancy less than 0.9.

Mol	Type	Chain	Res	Atoms	RSCC	RSR	B-factors( $\text{\AA}^2$ )	Q<0.9
2	COA	B	501	48/48	0.85	0.14	23,31,51,60	1
2	COA	A	1001	48/48	0.87	0.13	21,30,55,65	1
2	COA	C	501	48/48	0.87	0.14	23,31,50,58	1
2	COA	D	501	48/48	0.88	0.12	21,29,47,53	5
3	GOL	C	502	6/6	0.96	0.06	18,18,19,20	0
3	GOL	D	502	6/6	0.96	0.06	21,21,22,22	0
3	GOL	B	502	6/6	0.97	0.06	20,24,26,26	0
3	GOL	A	1002	6/6	0.98	0.07	23,23,26,26	0
4	CL	B	503	1/1	0.98	0.06	36,36,36,36	0
4	CL	D	504	1/1	0.98	0.04	36,36,36,36	0
4	CL	C	503	1/1	0.99	0.20	39,39,39,39	0
4	CL	D	503	1/1	0.99	0.04	36,36,36,36	0
4	CL	A	1003	1/1	0.99	0.11	34,34,34,34	0

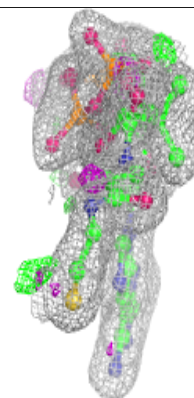
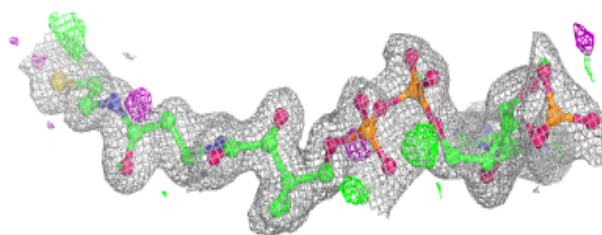
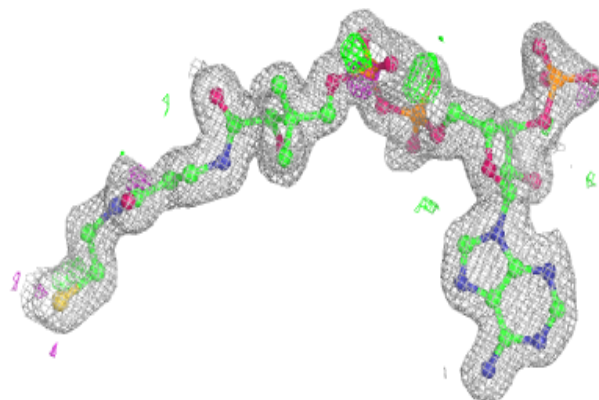
The following is a graphical depiction of the model fit to experimental electron density of all instances of the Ligand of Interest. In addition, ligands with molecular weight > 250 and outliers as shown on the geometry validation Tables will also be included. Each fit is shown from different orientation to approximate a three-dimensional view.

**Electron density around COA B 501:**

$2mF_o-DF_c$  (at 0.7 rmsd) in gray  
 $mF_o-DF_c$  (at 3 rmsd) in purple (negative)  
and green (positive)

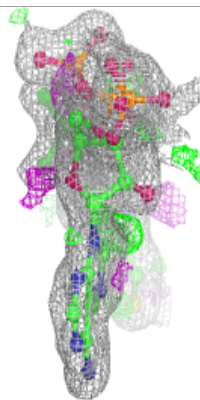
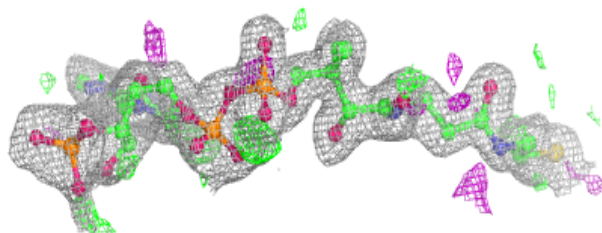
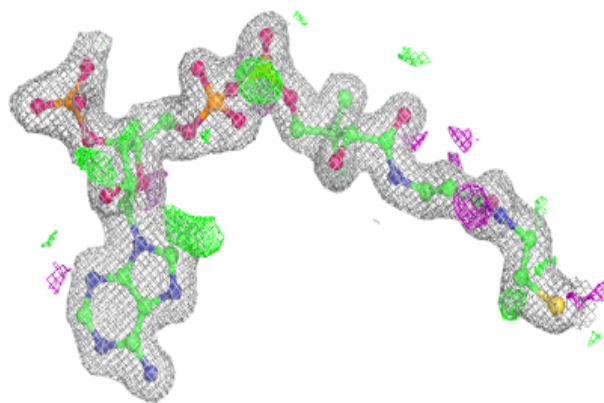
**Electron density around COA A 1001:**

$2mF_o-DF_c$  (at 0.7 rmsd) in gray  
 $mF_o-DF_c$  (at 3 rmsd) in purple (negative)  
and green (positive)

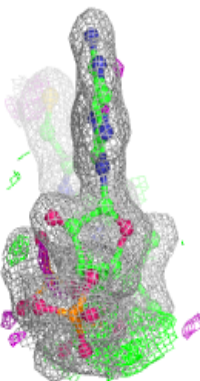
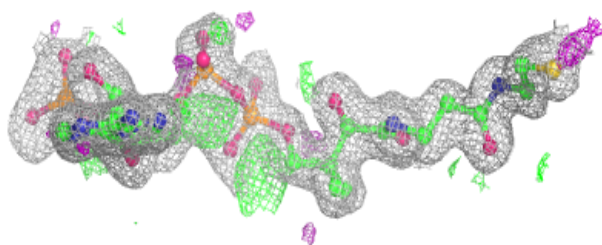
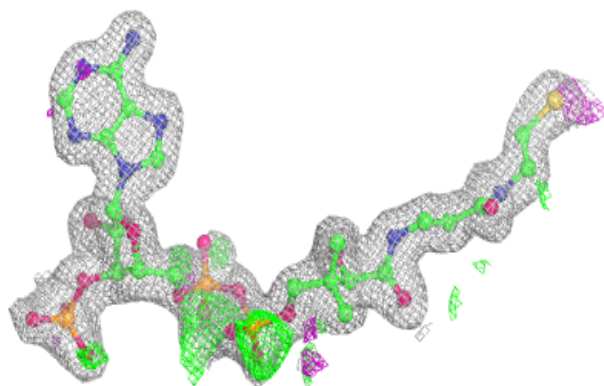


**Electron density around COA C 501:**

$2mF_o-DF_c$  (at 0.7 rmsd) in gray  
 $mF_o-DF_c$  (at 3 rmsd) in purple (negative)  
and green (positive)

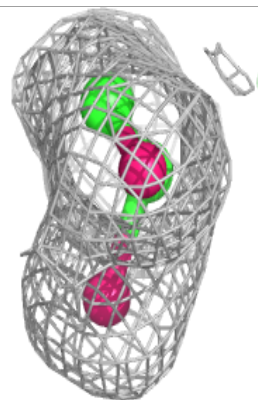
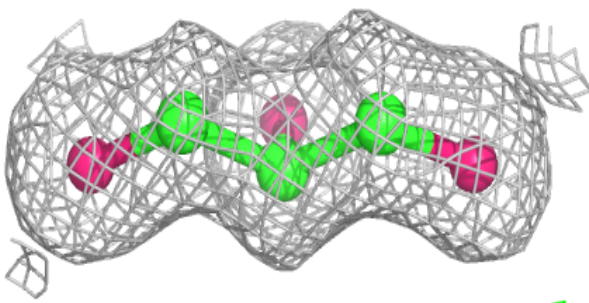
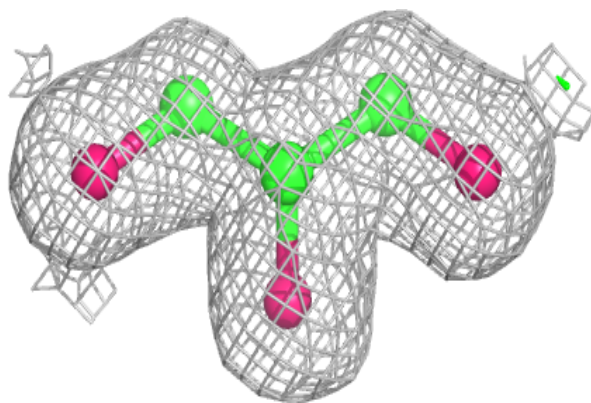
**Electron density around COA D 501:**

$2mF_o-DF_c$  (at 0.7 rmsd) in gray  
 $mF_o-DF_c$  (at 3 rmsd) in purple (negative)  
and green (positive)

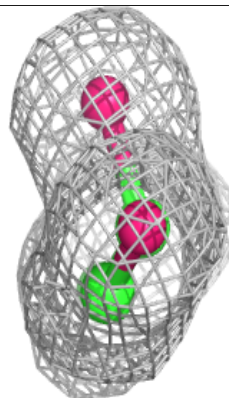
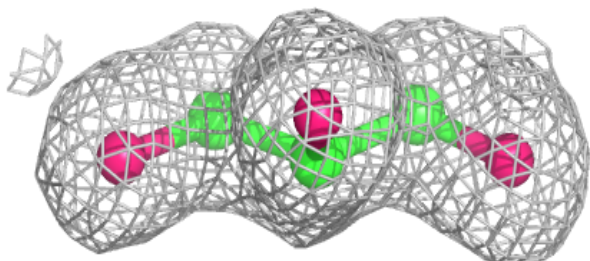
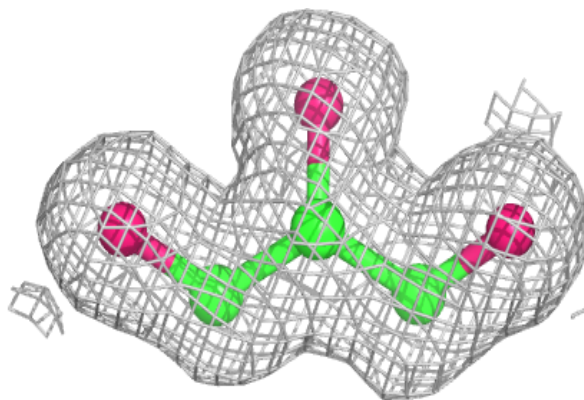


**Electron density around GOL C 502:**

$2mF_o-DF_c$  (at 0.7 rmsd) in gray  
 $mF_o-DF_c$  (at 3 rmsd) in purple (negative)  
and green (positive)

**Electron density around GOL D 502:**

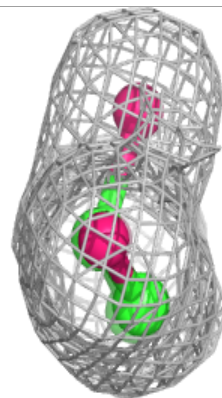
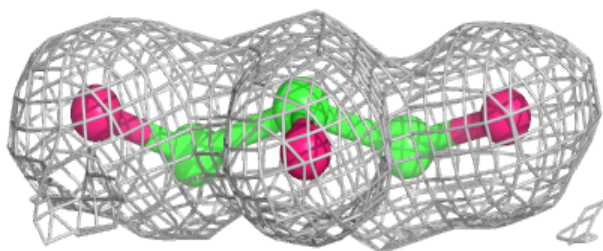
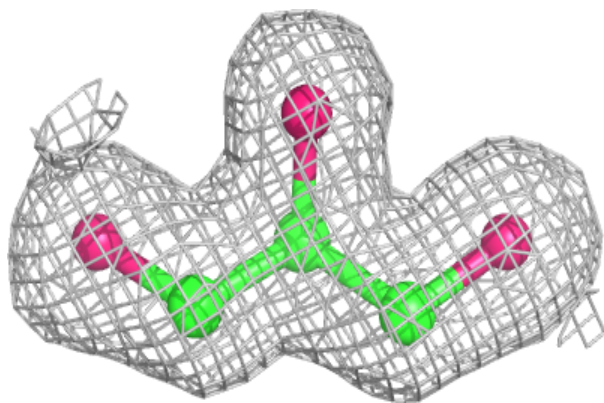
$2mF_o-DF_c$  (at 0.7 rmsd) in gray  
 $mF_o-DF_c$  (at 3 rmsd) in purple (negative)  
and green (positive)



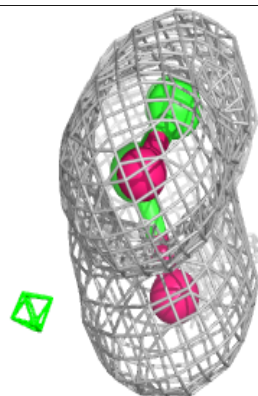
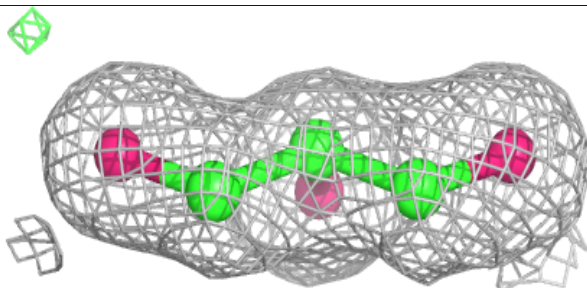
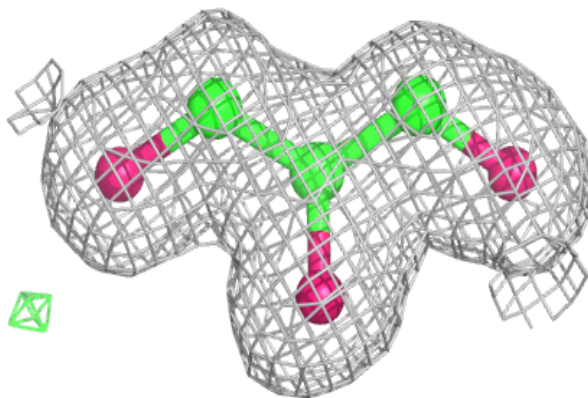


**Electron density around GOL B 502:**

$2mF_o-DF_c$  (at 0.7 rmsd) in gray  
 $mF_o-DF_c$  (at 3 rmsd) in purple (negative)  
and green (positive)

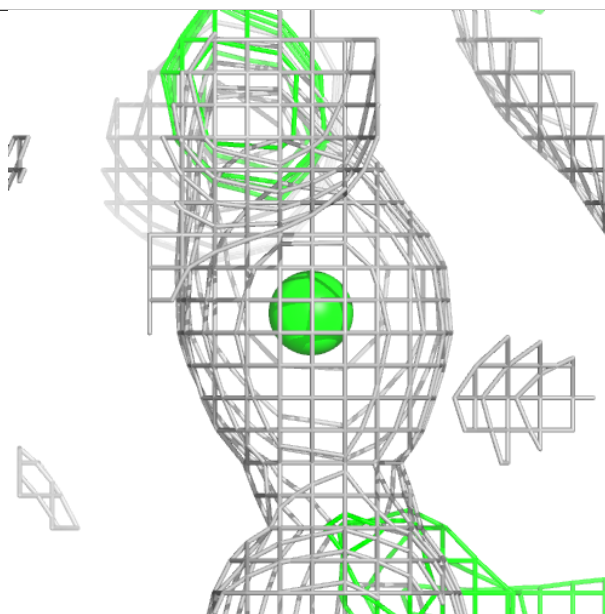
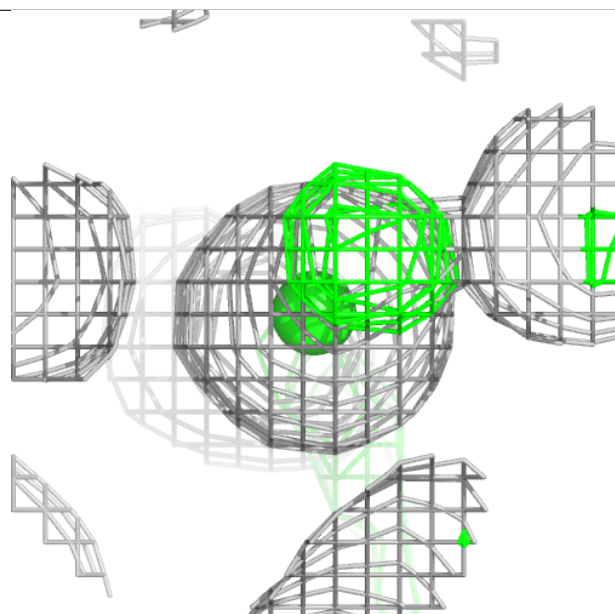
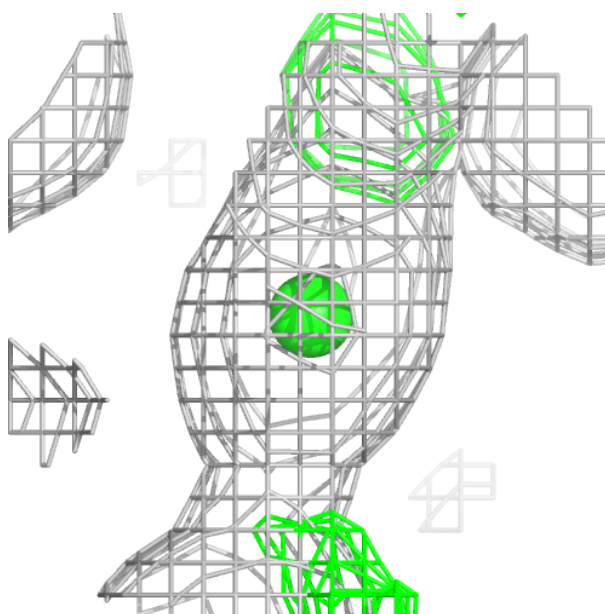
**Electron density around GOL A 1002:**

$2mF_o-DF_c$  (at 0.7 rmsd) in gray  
 $mF_o-DF_c$  (at 3 rmsd) in purple (negative)  
and green (positive)



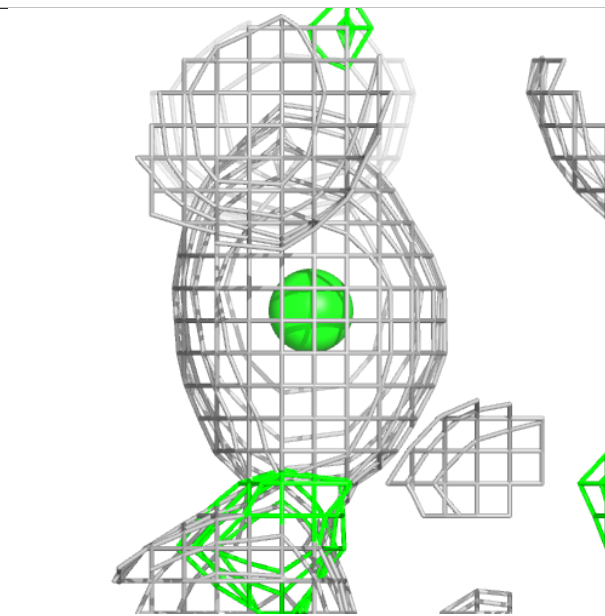
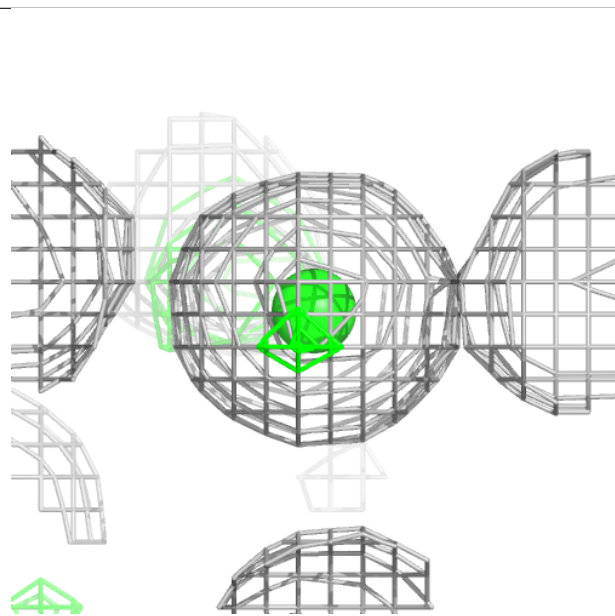
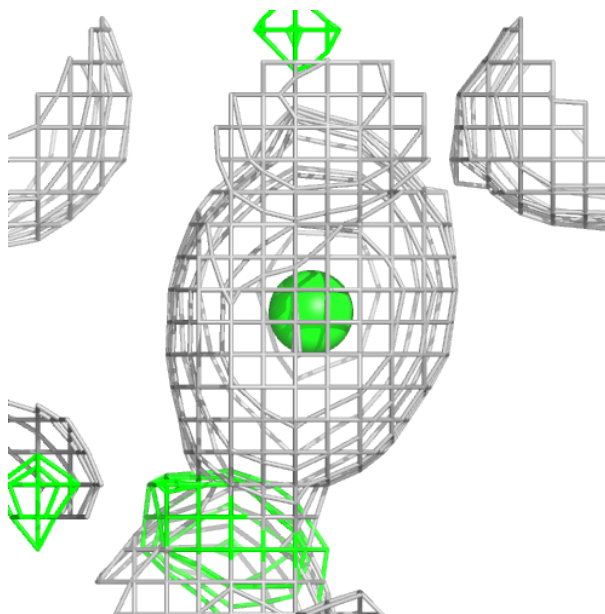
**Electron density around CL B 503:**

$2mF_o-DF_c$  (at 0.7 rmsd) in gray  
 $mF_o-DF_c$  (at 3 rmsd) in purple (negative)  
and green (positive)



**Electron density around CL D 504:**

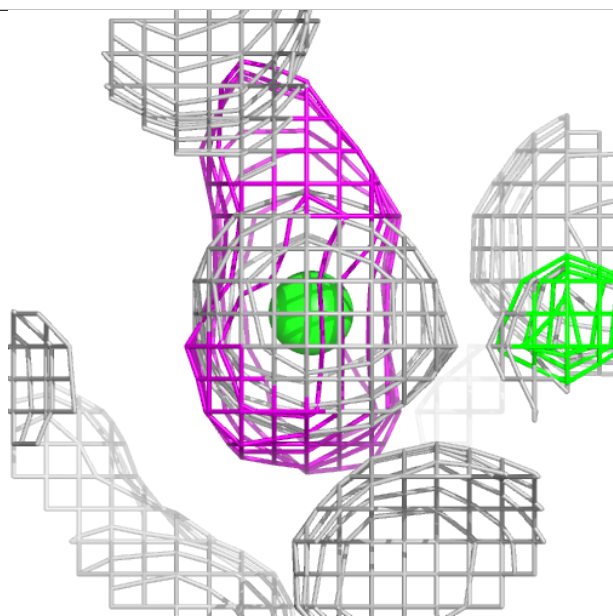
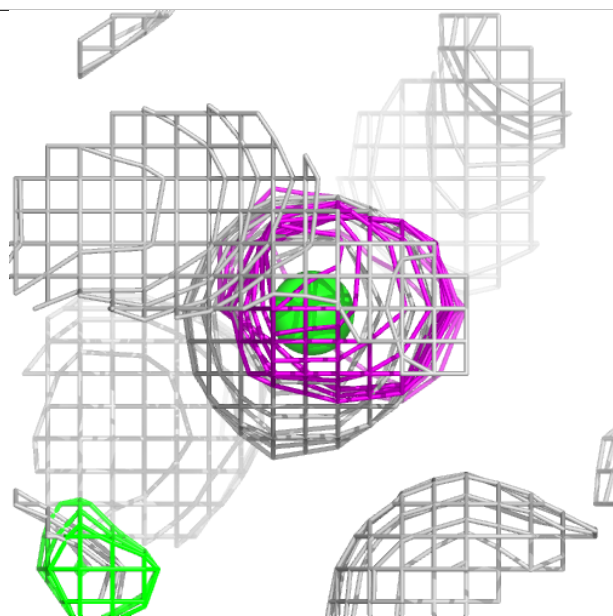
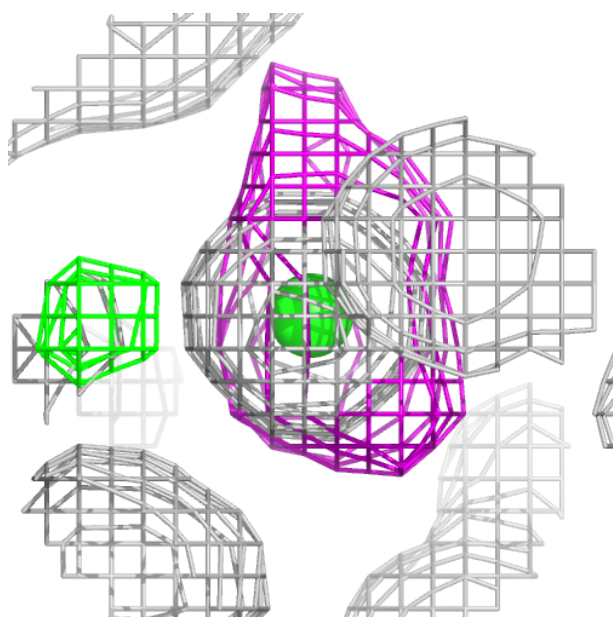
$2mF_o-DF_c$  (at 0.7 rmsd) in gray  
 $mF_o-DF_c$  (at 3 rmsd) in purple (negative)  
and green (positive)





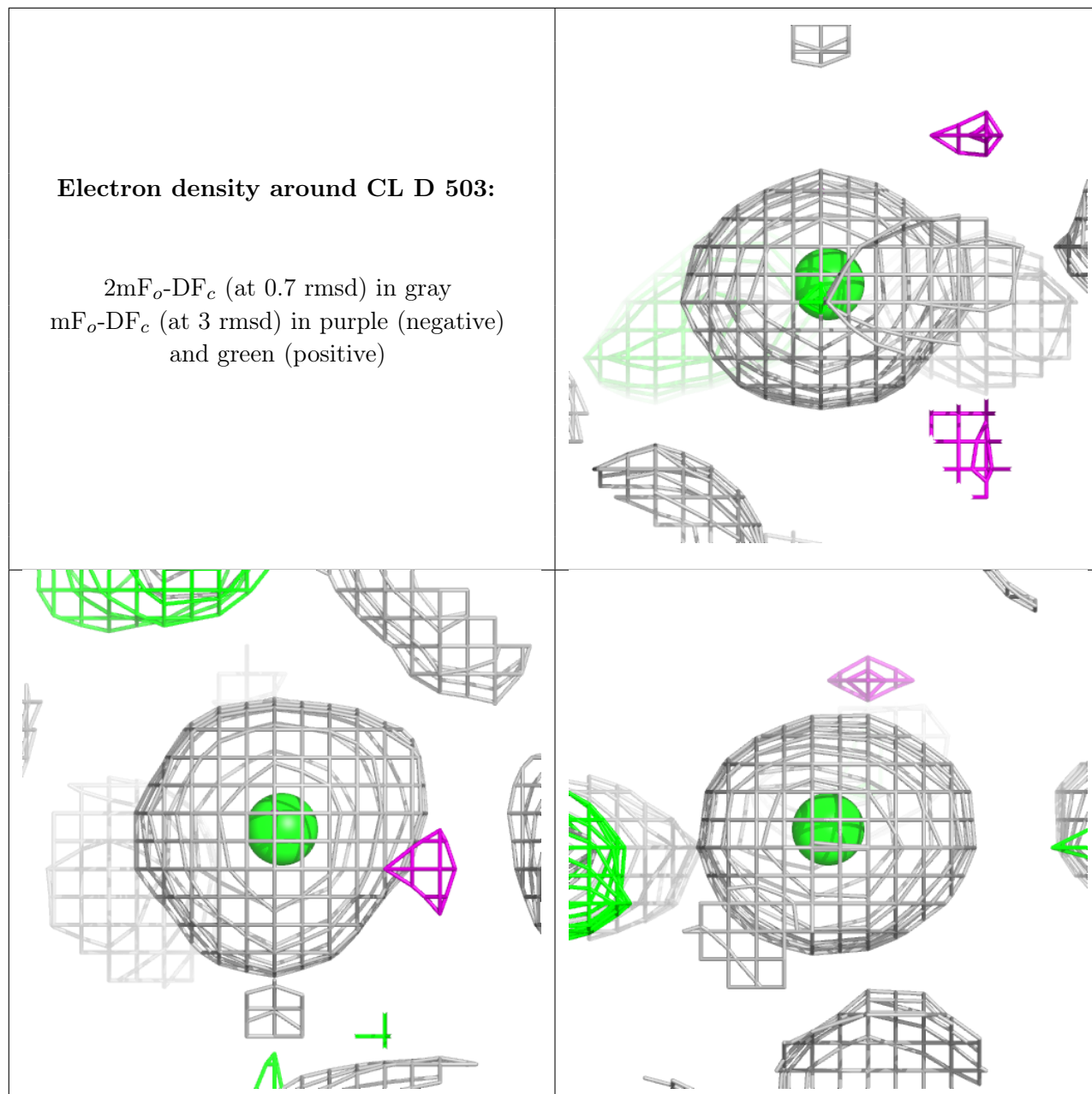
**Electron density around CL C 503:**

$2mF_o-DF_c$  (at 0.7 rmsd) in gray  
 $mF_o-DF_c$  (at 3 rmsd) in purple (negative)  
and green (positive)



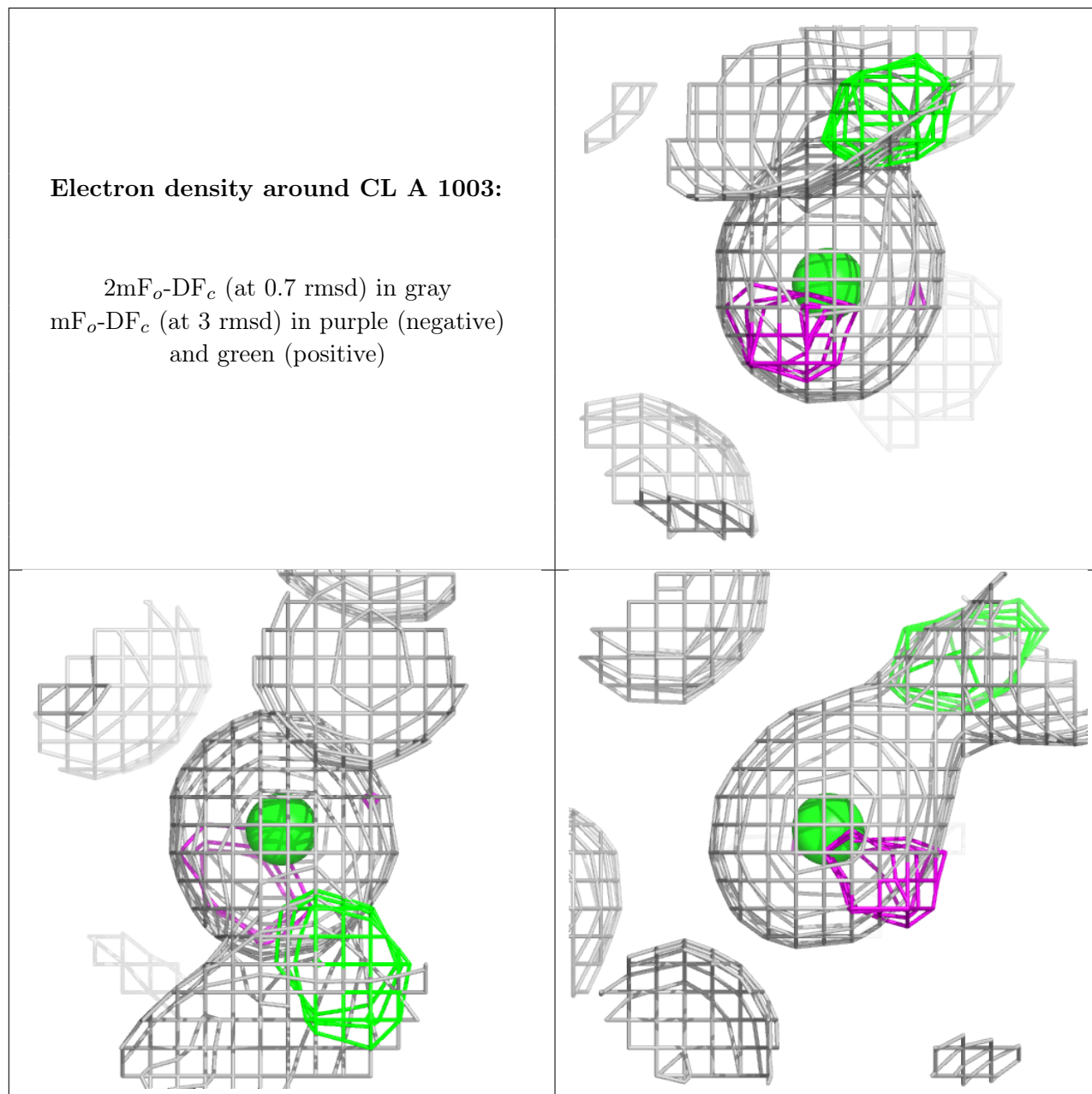
**Electron density around CL D 503:**

$2mF_o-DF_c$  (at 0.7 rmsd) in gray  
 $mF_o-DF_c$  (at 3 rmsd) in purple (negative)  
and green (positive)



**Electron density around CL A 1003:**

$2mF_o-DF_c$  (at 0.7 rmsd) in gray  
 $mF_o-DF_c$  (at 3 rmsd) in purple (negative)  
and green (positive)



## 6.5 Other polymers ⓘ

There are no such residues in this entry.