



# Full wwPDB X-ray Structure Validation Report ⓘ

Jun 24, 2024 – 11:34 PM EDT

PDB ID : 5QCR  
Title : Crystal structure of BACE complex with BMC026  
Authors : Rondeau, J.M.; Shao, C.; Yang, H.; Burley, S.K.  
Deposited on : 2017-12-01  
Resolution : 2.20 Å(reported)

This is a Full wwPDB X-ray Structure Validation Report for a publicly released PDB entry.

We welcome your comments at [validation@mail.wwpdb.org](mailto:validation@mail.wwpdb.org)

A user guide is available at

<https://www.wwpdb.org/validation/2017/XrayValidationReportHelp>

with specific help available everywhere you see the ⓘ symbol.

The types of validation reports are described at

<http://www.wwpdb.org/validation/2017/FAQs#types>.

---

The following versions of software and data (see [references ⓘ](#)) were used in the production of this report:

MolProbity	:	4.02b-467
Mogul	:	1.8.5 (274361), CSD as541be (2020)
Xtriage (Phenix)	:	1.13
EDS	:	2.37.1
buster-report	:	1.1.7 (2018)
Percentile statistics	:	20191225.v01 (using entries in the PDB archive December 25th 2019)
Refmac	:	5.8.0158
CCP4	:	7.0.044 (Gargrove)
Ideal geometry (proteins)	:	Engh & Huber (2001)
Ideal geometry (DNA, RNA)	:	Parkinson et al. (1996)
Validation Pipeline (wwPDB-VP)	:	2.37.1

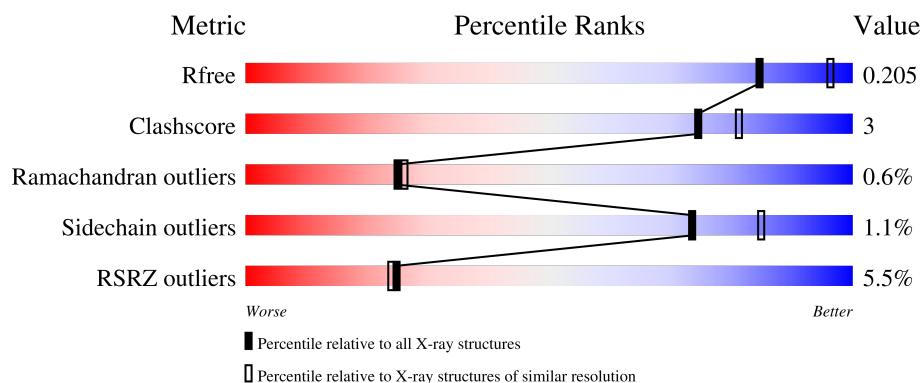
# 1 Overall quality at a glance

The following experimental techniques were used to determine the structure:

*X-RAY DIFFRACTION*

The reported resolution of this entry is 2.20 Å.

Percentile scores (ranging between 0-100) for global validation metrics of the entry are shown in the following graphic. The table shows the number of entries on which the scores are based.



Metric	Whole archive (#Entries)	Similar resolution (#Entries, resolution range(Å))
$R_{free}$	130704	4898 (2.20-2.20)
Clashscore	141614	5594 (2.20-2.20)
Ramachandran outliers	138981	5503 (2.20-2.20)
Sidechain outliers	138945	5504 (2.20-2.20)
RSRZ outliers	127900	4800 (2.20-2.20)

The table below summarises the geometric issues observed across the polymeric chains and their fit to the electron density. The red, orange, yellow and green segments of the lower bar indicate the fraction of residues that contain outliers for  $\geq 3$ , 2, 1 and 0 types of geometric quality criteria respectively. A grey segment represents the fraction of residues that are not modelled. The numeric value for each fraction is indicated below the corresponding segment, with a dot representing fractions  $\leq 5\%$ . The upper red bar (where present) indicates the fraction of residues that have poor fit to the electron density. The numeric value is given above the bar.

Mol	Chain	Length	Quality of chain
1	A	402	
1	B	402	
1	C	402	

## 2 Entry composition

There are 4 unique types of molecules in this entry. The entry contains 9297 atoms, of which 0 are hydrogens and 0 are deuteriums.

In the tables below, the ZeroOcc column contains the number of atoms modelled with zero occupancy, the AltConf column contains the number of residues with at least one atom in alternate conformation and the Trace column contains the number of residues modelled with at most 2 atoms.

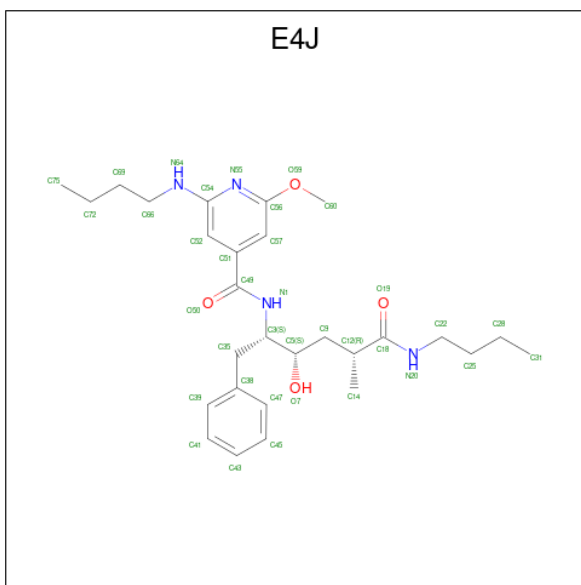
- Molecule 1 is a protein called Beta-secretase 1.

Mol	Chain	Residues	Atoms					ZeroOcc	AltConf	Trace
1	A	375	Total	C	N	O	S	0	0	0
			2953	1890	491	558	14			
1	B	375	Total	C	N	O	S	0	0	0
			2953	1890	491	558	14			
1	C	375	Total	C	N	O	S	0	0	0
			2953	1890	491	558	14			

There are 6 discrepancies between the modelled and reference sequences:

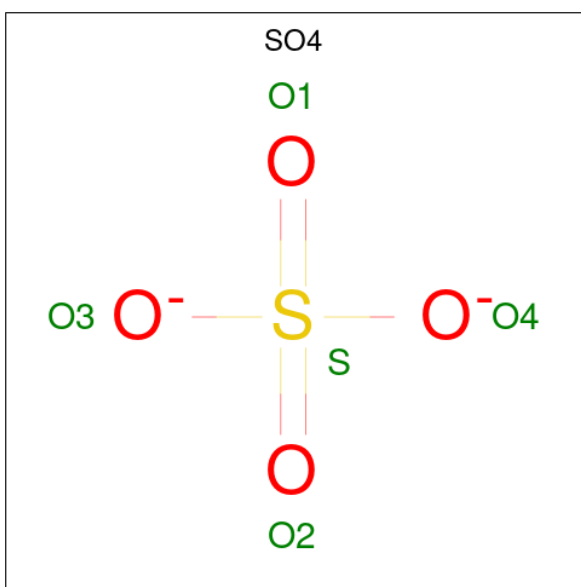
Chain	Residue	Modelled	Actual	Comment	Reference
A	-15	GLY	-	expression tag	UNP P56817
A	-14	PRO	-	expression tag	UNP P56817
B	-15	GLY	-	expression tag	UNP P56817
B	-14	PRO	-	expression tag	UNP P56817
C	-15	GLY	-	expression tag	UNP P56817
C	-14	PRO	-	expression tag	UNP P56817

- Molecule 2 is 2-(butylamino)-N-[(2S,3S,5R)-6-(butylamino)-3-hydroxy-5-methyl-6-oxo-1-phenylhexan-2-yl]-6-methoxypyridine-4-carboxamide (three-letter code: E4J) (formula: C<sub>28</sub>H<sub>42</sub>N<sub>4</sub>O<sub>4</sub>).



Mol	Chain	Residues	Atoms				ZeroOcc	AltConf
2	A	1	Total	C	N	O	0	0
			36	28	4	4		
2	B	1	Total	C	N	O	0	0
			36	28	4	4		
2	C	1	Total	C	N	O	0	0
			36	28	4	4		

- Molecule 3 is SULFATE ION (three-letter code: SO<sub>4</sub>) (formula: O<sub>4</sub>S).



Mol	Chain	Residues	Atoms			ZeroOcc	AltConf
3	A	1	Total	O	S	0	0
			5	4	1		

*Continued on next page...*

*Continued from previous page...*

Mol	Chain	Residues	Atoms			ZeroOcc	AltConf
3	B	1	Total	O	S	0	0
			5	4	1		
3	C	1	Total	O	S	0	0
			5	4	1		

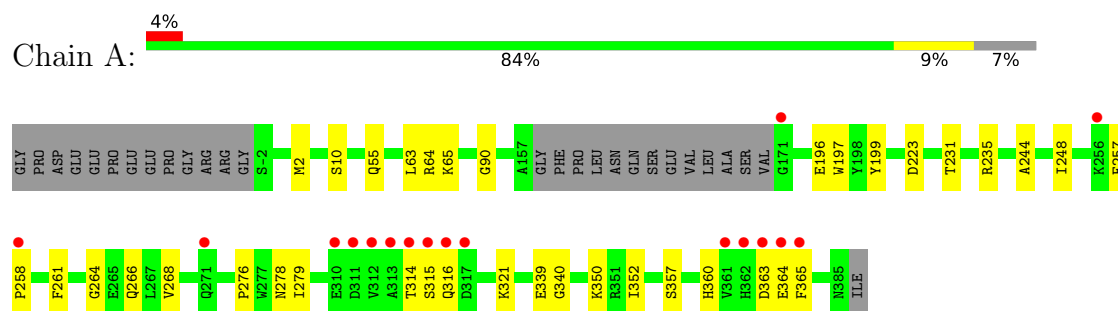
- Molecule 4 is water.

Mol	Chain	Residues	Atoms		ZeroOcc	AltConf
4	A	112	Total	O	0	0
			112	112		
4	B	98	Total	O	0	0
			98	98		
4	C	105	Total	O	0	0
			105	105		

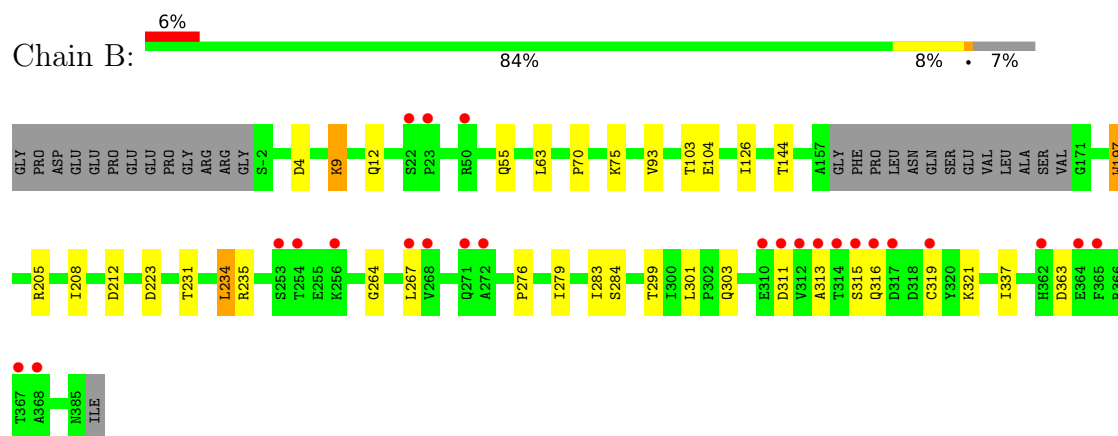
### 3 Residue-property plots [i](#)

These plots are drawn for all protein, RNA, DNA and oligosaccharide chains in the entry. The first graphic for a chain summarises the proportions of the various outlier classes displayed in the second graphic. The second graphic shows the sequence view annotated by issues in geometry and electron density. Residues are color-coded according to the number of geometric quality criteria for which they contain at least one outlier: green = 0, yellow = 1, orange = 2 and red = 3 or more. A red dot above a residue indicates a poor fit to the electron density ( $RSRZ > 2$ ). Stretches of 2 or more consecutive residues without any outlier are shown as a green connector. Residues present in the sample, but not in the model, are shown in grey.

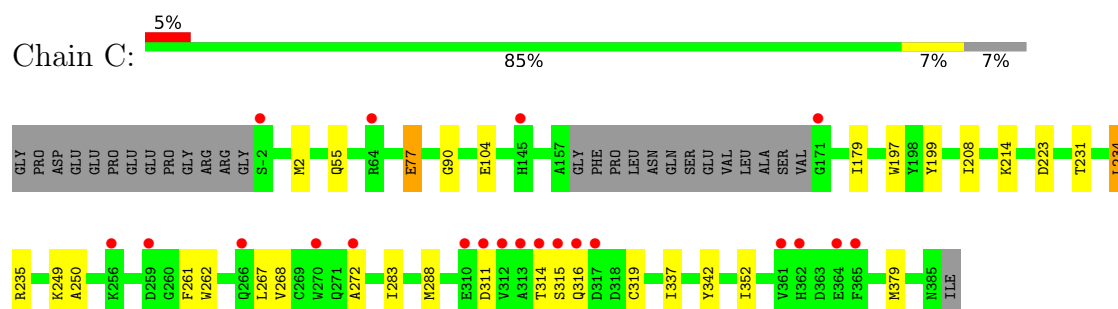
#### • Molecule 1: Beta-secretase 1



#### • Molecule 1: Beta-secretase 1



#### • Molecule 1: Beta-secretase 1



## 4 Data and refinement statistics

Property	Value	Source
Space group	P 1 21 1	Depositor
Cell constants a, b, c, $\alpha$ , $\beta$ , $\gamma$	81.76Å 102.76Å 99.93Å 90.00° 103.28° 90.00°	Depositor
Resolution (Å)	46.52 – 2.20 46.52 – 2.20	Depositor EDS
% Data completeness (in resolution range)	99.7 (46.52-2.20) 99.7 (46.52-2.20)	Depositor EDS
$R_{merge}$	0.06	Depositor
$R_{sym}$	(Not available)	Depositor
$\langle I/\sigma(I) \rangle$ <sup>1</sup>	2.35 (at 2.20Å)	Xtriage
Refinement program	PHENIX 1.12_2829, CNX	Depositor
R, $R_{free}$	0.173 , 0.205 0.173 , 0.205	Depositor DCC
$R_{free}$ test set	8170 reflections (10.04%)	wwPDB-VP
Wilson B-factor (Å <sup>2</sup> )	41.2	Xtriage
Anisotropy	0.074	Xtriage
Bulk solvent $k_{sol}$ (e/Å <sup>3</sup> ), $B_{sol}$ (Å <sup>2</sup> )	0.35 , 43.0	EDS
L-test for twinning <sup>2</sup>	$\langle  L  \rangle = 0.49$ , $\langle L^2 \rangle = 0.32$	Xtriage
Estimated twinning fraction	No twinning to report.	Xtriage
$F_o, F_c$ correlation	0.96	EDS
Total number of atoms	9297	wwPDB-VP
Average B, all atoms (Å <sup>2</sup> )	50.0	wwPDB-VP

Xtriage's analysis on translational NCS is as follows: *The largest off-origin peak in the Patterson function is 3.07% of the height of the origin peak. No significant pseudotranslation is detected.*

<sup>1</sup>Intensities estimated from amplitudes.

<sup>2</sup>Theoretical values of  $\langle |L| \rangle$ ,  $\langle L^2 \rangle$  for acentric reflections are 0.5, 0.333 respectively for untwinned datasets, and 0.375, 0.2 for perfectly twinned datasets.

## 5 Model quality

### 5.1 Standard geometry

Bond lengths and bond angles in the following residue types are not validated in this section: E4J, SO4

The Z score for a bond length (or angle) is the number of standard deviations the observed value is removed from the expected value. A bond length (or angle) with  $|Z| > 5$  is considered an outlier worth inspection. RMSZ is the root-mean-square of all Z scores of the bond lengths (or angles).

Mol	Chain	Bond lengths		Bond angles	
		RMSZ	# Z  >5	RMSZ	# Z  >5
1	A	0.43	0/3028	0.60	0/4115
1	B	0.45	0/3028	0.62	0/4115
1	C	0.41	0/3028	0.61	0/4115
All	All	0.43	0/9084	0.61	0/12345

There are no bond length outliers.

There are no bond angle outliers.

There are no chirality outliers.

There are no planarity outliers.

### 5.2 Too-close contacts

In the following table, the Non-H and H(model) columns list the number of non-hydrogen atoms and hydrogen atoms in the chain respectively. The H(added) column lists the number of hydrogen atoms added and optimized by MolProbity. The Clashes column lists the number of clashes within the asymmetric unit, whereas Symm-Clashes lists symmetry-related clashes.

Mol	Chain	Non-H	H(model)	H(added)	Clashes	Symm-Clashes
1	A	2953	0	2864	22	0
1	B	2953	0	2864	17	0
1	C	2953	0	2864	18	0
2	A	36	0	0	0	0
2	B	36	0	0	0	0
2	C	36	0	0	0	0
3	A	5	0	0	0	0
3	B	5	0	0	0	0
3	C	5	0	0	0	0
4	A	112	0	0	2	0

*Continued on next page...*



*Continued from previous page...*

Mol	Chain	Non-H	H(model)	H(added)	Clashes	Symm-Clashes
4	B	98	0	0	0	0
4	C	105	0	0	0	0
All	All	9297	0	8592	56	0

The all-atom clashscore is defined as the number of clashes found per 1000 atoms (including hydrogen atoms). The all-atom clashscore for this structure is 3.

All (56) close contacts within the same asymmetric unit are listed below, sorted by their clash magnitude.

Atom-1	Atom-2	Interatomic distance (Å)	Clash overlap (Å)
1:A:235:ARG:NH2	4:A:501:HOH:O	1.96	0.96
1:B:205:ARG:NH1	1:B:212:ASP:OD2	2.19	0.76
1:A:258:PRO:HB2	1:A:266:GLN:OE1	1.95	0.65
1:A:264:GLY:O	1:A:321:LYS:HE3	1.99	0.61
1:C:231:THR:HG21	1:C:235:ARG:HD2	1.83	0.60
1:B:208:ILE:HD13	1:B:283:ILE:HG12	1.84	0.59
1:A:231:THR:HG21	1:A:235:ARG:HD2	1.84	0.59
1:A:314:THR:HG22	1:A:316:GLN:HB2	1.86	0.57
1:C:77:GLU:HG3	1:C:104:GLU:HG3	1.85	0.57
1:B:9:LYS:N	1:B:9:LYS:HD3	2.23	0.54
1:C:288:MET:HE1	1:C:379:MET:HA	1.91	0.52
1:B:267:LEU:HD13	1:B:319:CYS:HB3	1.90	0.52
1:A:2:MET:HG2	1:A:90:GLY:HA2	1.91	0.52
1:A:196:GLU:OE2	1:A:350:LYS:HE3	2.10	0.52
1:B:311:ASP:HB3	1:B:315:SER:OG	2.10	0.51
1:B:284:SER:OG	1:B:299:THR:HG22	2.13	0.49
4:A:565:HOH:O	1:C:214:LYS:HE2	2.13	0.49
1:A:10:SER:HB3	1:A:339:GLU:OE1	2.13	0.49
1:A:63:LEU:O	1:A:65:LYS:HG3	2.13	0.48
1:C:311:ASP:OD2	1:C:315:SER:OG	2.30	0.48
1:A:278:ASN:HD22	1:A:278:ASN:H	1.62	0.47
1:B:9:LYS:HE2	1:B:12:GLN:HB2	1.95	0.47
1:A:257:PHE:HD2	1:A:268:VAL:HG21	1.80	0.47
1:A:276:PRO:O	1:A:279:ILE:HG12	2.15	0.46
1:A:55:GLN:H	1:A:55:GLN:CD	2.19	0.46
1:B:276:PRO:O	1:B:279:ILE:HG12	2.16	0.45
1:C:199:TYR:HB3	1:C:352:ILE:HD11	1.97	0.45
1:A:199:TYR:HB3	1:A:352:ILE:HD11	1.99	0.45
1:A:314:THR:C	1:A:316:GLN:H	2.17	0.45
1:C:261:PHE:CD1	1:C:268:VAL:HG23	2.52	0.44
1:C:2:MET:HG2	1:C:90:GLY:HA2	1.99	0.44

*Continued on next page...*

Continued from previous page...

Atom-1	Atom-2	Interatomic distance (Å)	Clash overlap (Å)
1:B:70:PRO:HA	1:B:75:LYS:HB3	1.99	0.44
1:B:103:THR:O	1:B:104:GLU:HG3	2.18	0.44
1:B:303:GLN:NE2	1:B:363:ASP:HB3	2.33	0.43
1:A:365:PHE:CD1	1:C:250:ALA:HB1	2.53	0.43
1:C:234:LEU:HG	1:C:337:ILE:HD11	1.98	0.43
1:B:264:GLY:O	1:B:321:LYS:HE3	2.19	0.43
1:C:179:ILE:HG23	1:C:342:TYR:HE2	1.83	0.43
1:C:288:MET:HE3	1:C:288:MET:HB2	1.71	0.42
1:C:55:GLN:H	1:C:55:GLN:CD	2.22	0.42
1:C:272:ALA:HB2	1:C:316:GLN:O	2.19	0.42
1:A:340:GLY:HA2	1:A:360:HIS:HA	2.00	0.42
1:B:93:VAL:HG21	1:B:144:THR:CG2	2.50	0.42
1:A:244:ALA:O	1:A:248:ILE:HG13	2.20	0.42
1:B:231:THR:HG21	1:B:235:ARG:HD2	2.01	0.42
1:B:55:GLN:CD	1:B:55:GLN:H	2.24	0.42
1:C:316:GLN:O	1:C:316:GLN:HG2	2.20	0.41
1:B:234:LEU:HG	1:B:337:ILE:HD11	2.00	0.41
1:C:249:LYS:HE2	1:C:262:TRP:CD1	2.55	0.41
1:A:261:PHE:CD1	1:A:268:VAL:HG23	2.55	0.41
1:A:363:ASP:OD2	1:A:364:GLU:N	2.53	0.41
1:A:357:SER:O	1:A:360:HIS:HB3	2.21	0.40
1:B:126:ILE:HG23	1:B:197:TRP:HB2	2.03	0.40
1:C:267:LEU:HD13	1:C:319:CYS:HB3	2.02	0.40
1:C:208:ILE:HD13	1:C:283:ILE:HG12	2.04	0.40
1:A:314:THR:O	1:A:316:GLN:N	2.39	0.40

There are no symmetry-related clashes.

## 5.3 Torsion angles

### 5.3.1 Protein backbone

In the following table, the Percentiles column shows the percent Ramachandran outliers of the chain as a percentile score with respect to all X-ray entries followed by that with respect to entries of similar resolution.

The Analysed column shows the number of residues for which the backbone conformation was analysed, and the total number of residues.

Mol	Chain	Analysed	Favoured	Allowed	Outliers	Percentiles
1	A	371/402 (92%)	360 (97%)	9 (2%)	2 (0%)	29 31

Continued on next page...

*Continued from previous page...*

Mol	Chain	Analysed	Favoured	Allowed	Outliers	Percentiles	
1	B	371/402 (92%)	357 (96%)	11 (3%)	3 (1%)	19	19
1	C	371/402 (92%)	359 (97%)	10 (3%)	2 (0%)	29	31
All	All	1113/1206 (92%)	1076 (97%)	30 (3%)	7 (1%)	25	26

All (7) Ramachandran outliers are listed below:

Mol	Chain	Res	Type
1	A	223	ASP
1	A	315	SER
1	B	223	ASP
1	C	223	ASP
1	C	314	THR
1	B	316	GLN
1	B	313	ALA

### 5.3.2 Protein sidechains ⓘ

In the following table, the Percentiles column shows the percent sidechain outliers of the chain as a percentile score with respect to all X-ray entries followed by that with respect to entries of similar resolution.

The Analysed column shows the number of residues for which the sidechain conformation was analysed, and the total number of residues.

Mol	Chain	Analysed	Rotameric	Outliers	Percentiles	
1	A	320/342 (94%)	318 (99%)	2 (1%)	86	93
1	B	320/342 (94%)	314 (98%)	6 (2%)	57	71
1	C	320/342 (94%)	317 (99%)	3 (1%)	78	88
All	All	960/1026 (94%)	949 (99%)	11 (1%)	73	85

All (11) residues with a non-rotameric sidechain are listed below:

Mol	Chain	Res	Type
1	A	64	ARG
1	A	197	TRP
1	B	4	ASP
1	B	9	LYS
1	B	63	LEU
1	B	197	TRP
1	B	234	LEU

*Continued on next page...*

*Continued from previous page...*

Mol	Chain	Res	Type
1	B	301	LEU
1	C	77	GLU
1	C	197	TRP
1	C	234	LEU

Sometimes sidechains can be flipped to improve hydrogen bonding and reduce clashes. There are no such sidechains identified.

### 5.3.3 RNA [i](#)

There are no RNA molecules in this entry.

## 5.4 Non-standard residues in protein, DNA, RNA chains [i](#)

There are no non-standard protein/DNA/RNA residues in this entry.

## 5.5 Carbohydrates [i](#)

There are no monosaccharides in this entry.

## 5.6 Ligand geometry [i](#)

6 ligands are modelled in this entry.

In the following table, the Counts columns list the number of bonds (or angles) for which Mogul statistics could be retrieved, the number of bonds (or angles) that are observed in the model and the number of bonds (or angles) that are defined in the Chemical Component Dictionary. The Link column lists molecule types, if any, to which the group is linked. The Z score for a bond length (or angle) is the number of standard deviations the observed value is removed from the expected value. A bond length (or angle) with  $|Z| > 2$  is considered an outlier worth inspection. RMSZ is the root-mean-square of all Z scores of the bond lengths (or angles).

Mol	Type	Chain	Res	Link	Bond lengths			Bond angles		
					Counts	RMSZ	$\# Z  > 2$	Counts	RMSZ	$\# Z  > 2$
3	SO4	A	402	-	4,4,4	0.15	0	6,6,6	0.10	0
3	SO4	C	402	-	4,4,4	0.13	0	6,6,6	0.20	0
3	SO4	B	402	-	4,4,4	0.16	0	6,6,6	0.21	0
2	E4J	C	401	-	37,37,37	0.48	0	43,47,47	0.55	0
2	E4J	B	401	-	37,37,37	0.74	1 (2%)	43,47,47	0.61	0
2	E4J	A	401	-	37,37,37	0.68	1 (2%)	43,47,47	0.65	0

In the following table, the Chirals column lists the number of chiral outliers, the number of chiral centers analysed, the number of these observed in the model and the number defined in the Chemical Component Dictionary. Similar counts are reported in the Torsion and Rings columns. '-' means no outliers of that kind were identified.

Mol	Type	Chain	Res	Link	Chirals	Torsions	Rings
2	E4J	C	401	-	-	4/36/36/36	0/2/2/2
2	E4J	B	401	-	-	7/36/36/36	0/2/2/2
2	E4J	A	401	-	-	3/36/36/36	0/2/2/2

All (2) bond length outliers are listed below:

Mol	Chain	Res	Type	Atoms	Z	Observed(Å)	Ideal(Å)
2	B	401	E4J	C54-N64	3.80	1.41	1.36
2	A	401	E4J	C54-N64	3.36	1.41	1.36

There are no bond angle outliers.

There are no chirality outliers.

All (14) torsion outliers are listed below:

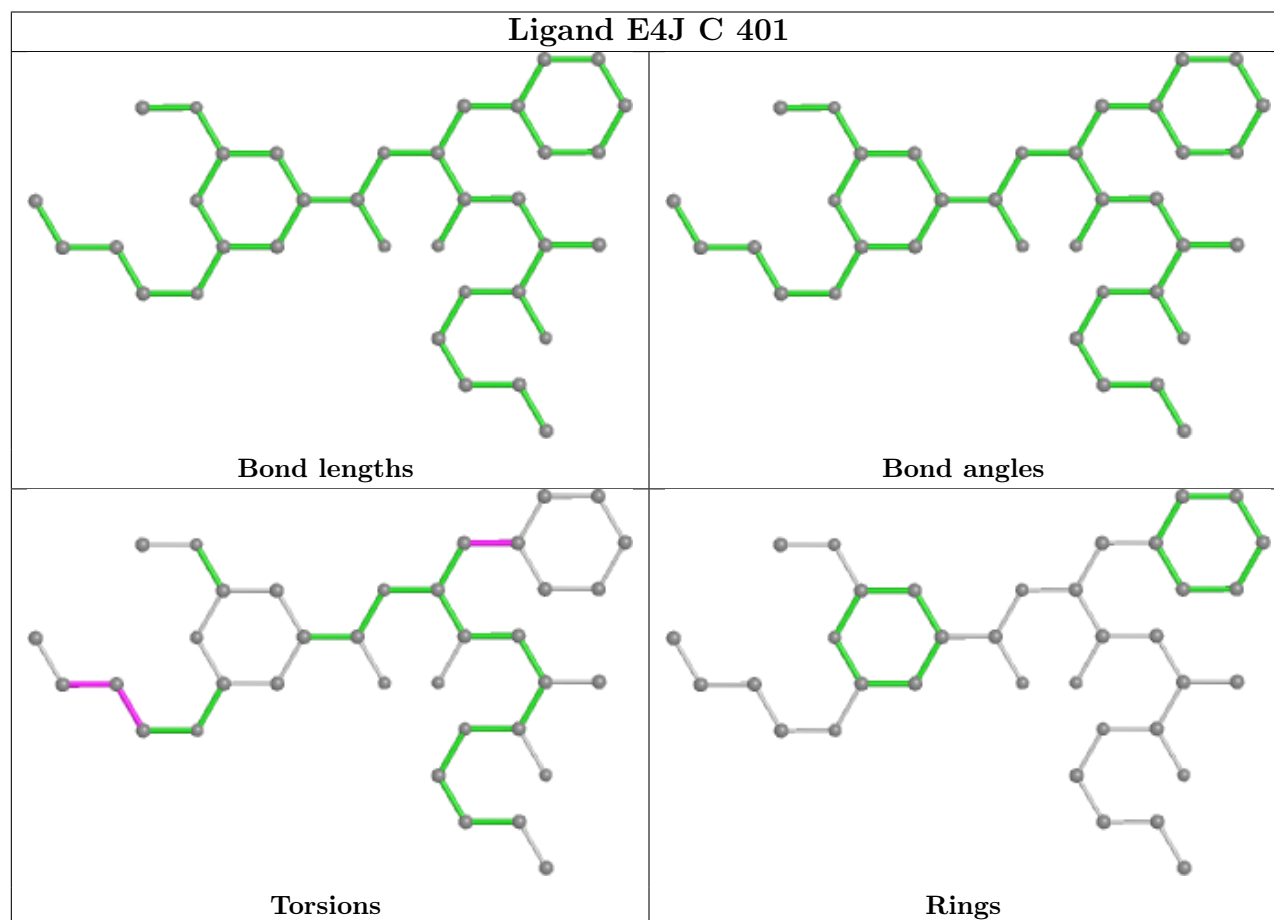
Mol	Chain	Res	Type	Atoms
2	B	401	E4J	N55-C56-O59-C60
2	B	401	E4J	C57-C56-O59-C60
2	C	401	E4J	N64-C66-C69-C72
2	A	401	E4J	N20-C22-C25-C28
2	B	401	E4J	N64-C66-C69-C72
2	C	401	E4J	C66-C69-C72-C75
2	B	401	E4J	C3-C35-C38-C47
2	B	401	E4J	C69-C66-N64-C54
2	B	401	E4J	C3-C35-C38-C39
2	C	401	E4J	C3-C35-C38-C47
2	A	401	E4J	C69-C66-N64-C54
2	C	401	E4J	C3-C35-C38-C39
2	B	401	E4J	C18-C12-C9-C5
2	A	401	E4J	C66-C69-C72-C75

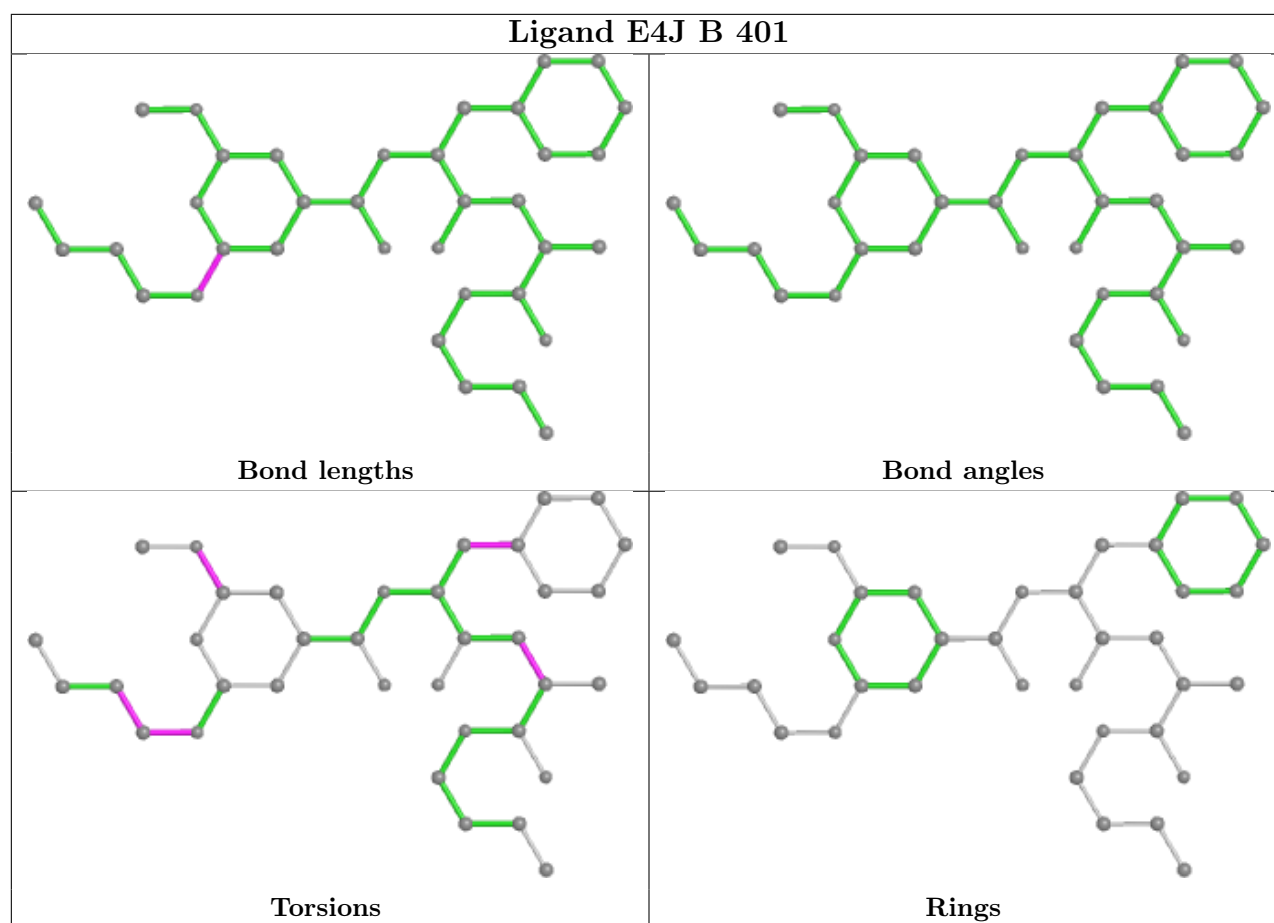
There are no ring outliers.

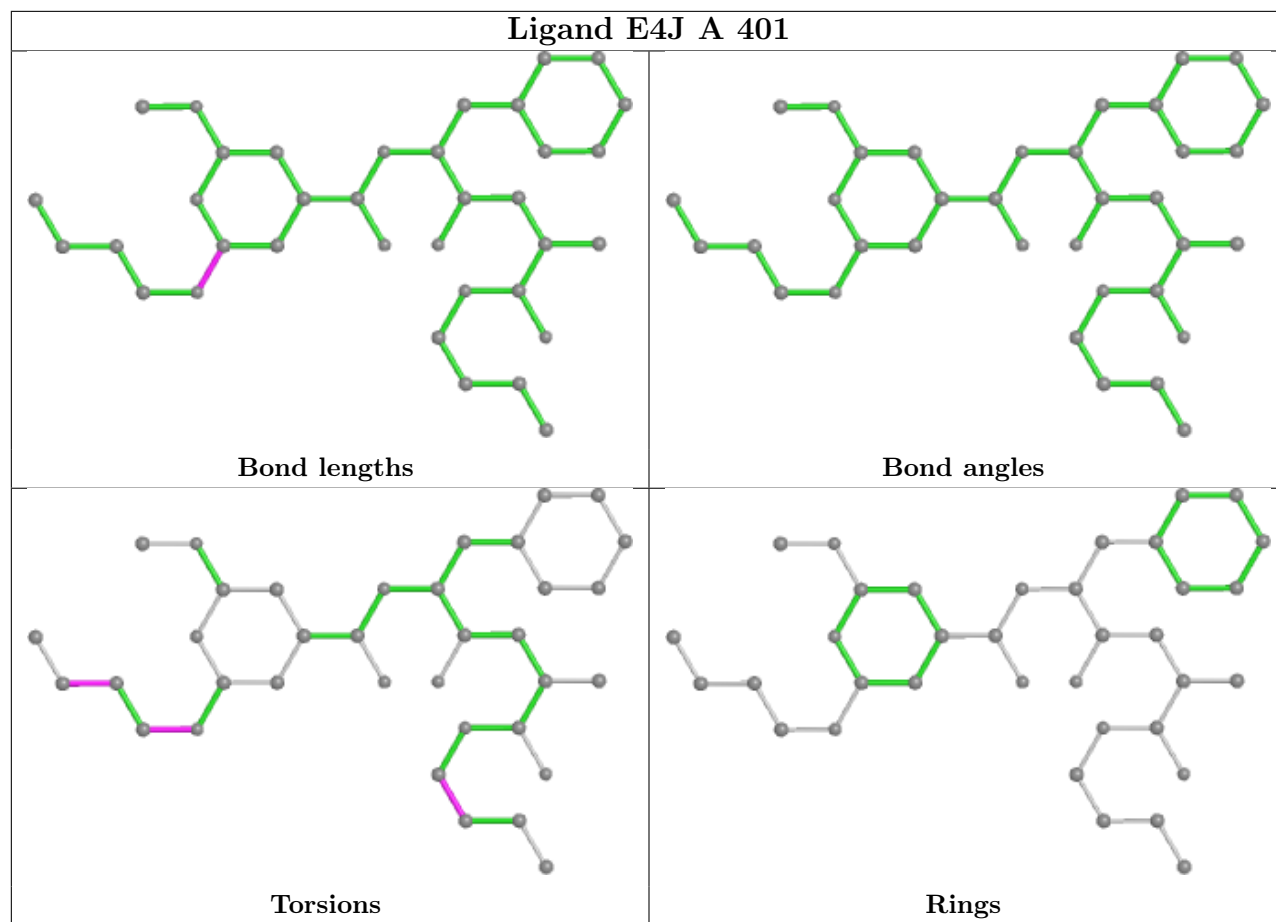
No monomer is involved in short contacts.

The following is a two-dimensional graphical depiction of Mogul quality analysis of bond lengths, bond angles, torsion angles, and ring geometry for all instances of the Ligand of Interest. In addition, ligands with molecular weight > 250 and outliers as shown on the validation Tables will also be included. For torsion angles, if less than 5% of the Mogul distribution of torsion angles is

within 10 degrees of the torsion angle in question, then that torsion angle is considered an outlier. Any bond that is central to one or more torsion angles identified as an outlier by Mogul will be highlighted in the graph. For rings, the root-mean-square deviation (RMSD) between the ring in question and similar rings identified by Mogul is calculated over all ring torsion angles. If the average RMSD is greater than 60 degrees and the minimal RMSD between the ring in question and any Mogul-identified rings is also greater than 60 degrees, then that ring is considered an outlier. The outliers are highlighted in purple. The color gray indicates Mogul did not find sufficient equivalents in the CSD to analyse the geometry.







## 5.7 Other polymers [i](#)

There are no such residues in this entry.

## 5.8 Polymer linkage issues [i](#)

There are no chain breaks in this entry.



## 6 Fit of model and data

### 6.1 Protein, DNA and RNA chains

In the following table, the column labelled ‘#RSRZ > 2’ contains the number (and percentage) of RSRZ outliers, followed by percent RSRZ outliers for the chain as percentile scores relative to all X-ray entries and entries of similar resolution. The OWAB column contains the minimum, median, 95<sup>th</sup> percentile and maximum values of the occupancy-weighted average B-factor per residue. The column labelled ‘Q < 0.9’ lists the number of (and percentage) of residues with an average occupancy less than 0.9.

Mol	Chain	Analysed	<RSRZ>	#RSRZ>2	OWAB(Å <sup>2</sup> )	Q<0.9
1	A	375/402 (93%)	0.31	17 (4%) 33 32	28, 45, 90, 155	0
1	B	375/402 (93%)	0.39	24 (6%) 19 18	28, 45, 97, 177	0
1	C	375/402 (93%)	0.28	21 (5%) 24 23	30, 46, 89, 158	0
All	All	1125/1206 (93%)	0.32	62 (5%) 25 24	28, 45, 90, 177	0

All (62) RSRZ outliers are listed below:

Mol	Chain	Res	Type	RSRZ
1	B	312	VAL	20.8
1	A	312	VAL	15.5
1	B	313	ALA	12.2
1	B	314	THR	11.1
1	C	313	ALA	9.7
1	A	313	ALA	8.4
1	B	365	PHE	7.7
1	A	311	ASP	7.2
1	B	364	GLU	5.9
1	A	315	SER	5.6
1	C	314	THR	5.6
1	C	316	GLN	5.5
1	B	311	ASP	5.5
1	C	365	PHE	5.2
1	A	314	THR	5.0
1	A	256	LYS	4.9
1	B	367	THR	4.9
1	C	312	VAL	4.9
1	C	362	HIS	4.8
1	A	316	GLN	4.3
1	C	256	LYS	4.2
1	A	365	PHE	4.1
1	B	368	ALA	4.0

*Continued on next page...*

*Continued from previous page...*

Mol	Chain	Res	Type	RSRZ
1	C	315	SER	3.8
1	B	317	ASP	3.7
1	B	256	LYS	3.6
1	A	362	HIS	3.6
1	B	253	SER	3.5
1	C	310	GLU	3.5
1	C	-2	SER	3.4
1	C	171	GLY	3.2
1	B	254	THR	3.2
1	B	315	SER	3.2
1	A	317	ASP	3.1
1	B	268	VAL	3.1
1	B	267	LEU	3.1
1	C	317	ASP	3.0
1	A	171	GLY	3.0
1	C	311	ASP	3.0
1	A	258	PRO	3.0
1	B	316	GLN	3.0
1	B	310	GLU	2.9
1	C	364	GLU	2.9
1	A	364	GLU	2.9
1	A	361	VAL	2.8
1	A	363	ASP	2.8
1	B	362	HIS	2.8
1	A	310	GLU	2.8
1	C	259	ASP	2.7
1	C	64	ARG	2.6
1	B	272	ALA	2.6
1	B	22	SER	2.5
1	C	272	ALA	2.4
1	A	271	GLN	2.4
1	C	145	HIS	2.2
1	C	266	GLN	2.2
1	B	50	ARG	2.2
1	C	270	TRP	2.2
1	B	23	PRO	2.1
1	B	271	GLN	2.1
1	C	361	VAL	2.1
1	B	319	CYS	2.0

## 6.2 Non-standard residues in protein, DNA, RNA chains [i](#)

There are no non-standard protein/DNA/RNA residues in this entry.

## 6.3 Carbohydrates [i](#)

There are no monosaccharides in this entry.

## 6.4 Ligands [i](#)

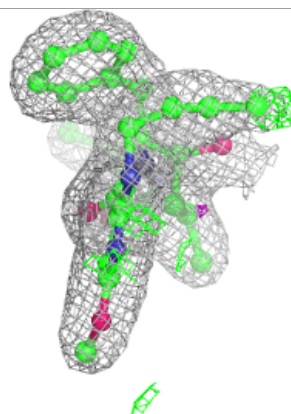
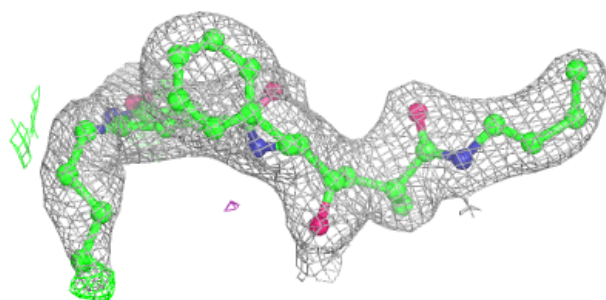
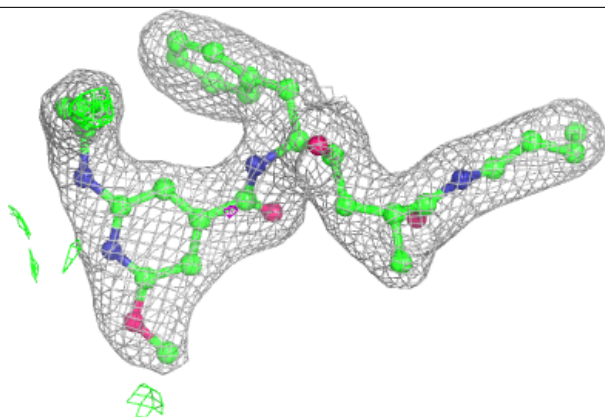
In the following table, the Atoms column lists the number of modelled atoms in the group and the number defined in the chemical component dictionary. The B-factors column lists the minimum, median, 95<sup>th</sup> percentile and maximum values of B factors of atoms in the group. The column labelled 'Q< 0.9' lists the number of atoms with occupancy less than 0.9.

Mol	Type	Chain	Res	Atoms	RSCC	RSR	B-factors( $\text{\AA}^2$ )	Q<0.9
3	SO4	A	402	5/5	0.94	0.15	92,93,96,100	0
3	SO4	C	402	5/5	0.94	0.14	96,100,104,104	0
2	E4J	A	401	36/36	0.95	0.18	29,39,55,58	1
2	E4J	B	401	36/36	0.96	0.17	31,35,50,53	1
3	SO4	B	402	5/5	0.97	0.14	69,74,80,84	0
2	E4J	C	401	36/36	0.97	0.17	30,38,54,57	0

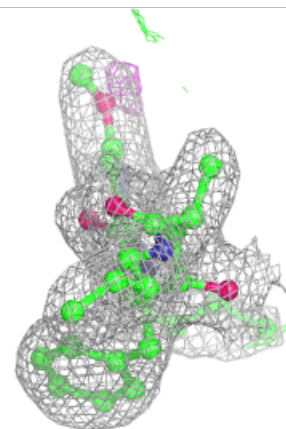
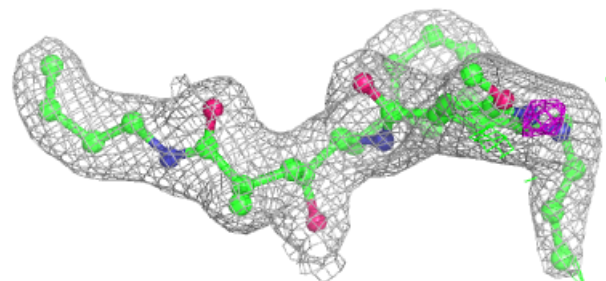
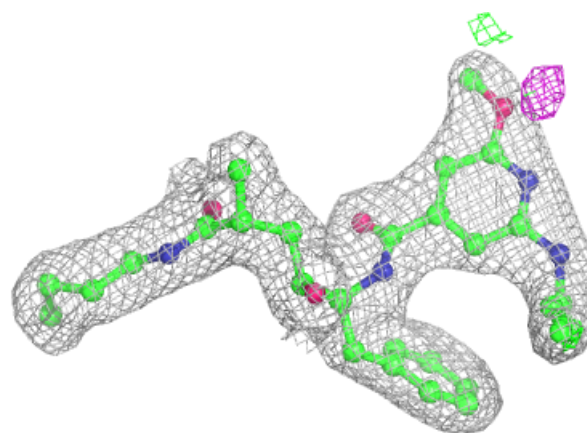
The following is a graphical depiction of the model fit to experimental electron density of all instances of the Ligand of Interest. In addition, ligands with molecular weight > 250 and outliers as shown on the geometry validation Tables will also be included. Each fit is shown from different orientation to approximate a three-dimensional view.

**Electron density around E4J A 401:**

$2mF_o-DF_c$  (at 0.7 rmsd) in gray  
 $mF_o-DF_c$  (at 3 rmsd) in purple (negative)  
and green (positive)

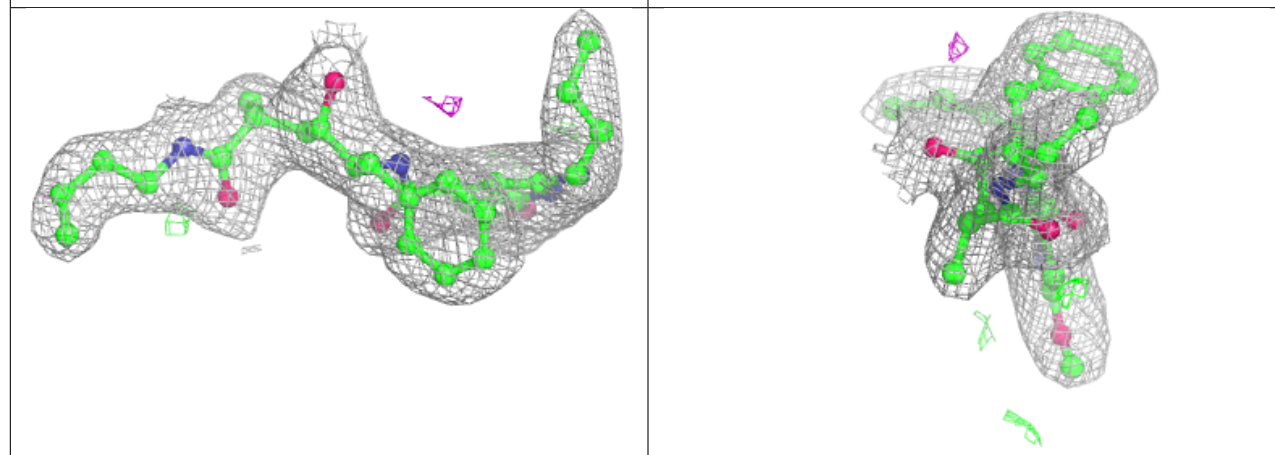
**Electron density around E4J B 401:**

$2mF_o-DF_c$  (at 0.7 rmsd) in gray  
 $mF_o-DF_c$  (at 3 rmsd) in purple (negative)  
and green (positive)



**Electron density around E4J C 401:**

$2mF_o-DF_c$  (at 0.7 rmsd) in gray  
 $mF_o-DF_c$  (at 3 rmsd) in purple (negative)  
and green (positive)



## 6.5 Other polymers [i](#)

There are no such residues in this entry.