



# Full wwPDB X-ray Structure Validation Report ⓘ

Jun 26, 2024 – 03:09 AM EDT

PDB ID : 6S8U  
Title : Structure of the PfEMP1 IT4var13 DBLbeta domain bound to ICAM-1  
Authors : Lennartz, F.; Higgins, M.K.  
Deposited on : 2019-07-10  
Resolution : 3.67 Å(reported)

This is a Full wwPDB X-ray Structure Validation Report for a publicly released PDB entry.

We welcome your comments at [validation@mail.wwpdb.org](mailto:validation@mail.wwpdb.org)

A user guide is available at

<https://www.wwpdb.org/validation/2017/XrayValidationReportHelp>

with specific help available everywhere you see the ⓘ symbol.

The types of validation reports are described at

<http://www.wwpdb.org/validation/2017/FAQs#types>.

---

The following versions of software and data (see [references ⓘ](#)) were used in the production of this report:

MolProbity	:	4.02b-467
Mogul	:	1.8.5 (274361), CSD as541be (2020)
Xtriage (Phenix)	:	1.13
EDS	:	2.37.1
Percentile statistics	:	20191225.v01 (using entries in the PDB archive December 25th 2019)
Refmac	:	5.8.0158
CCP4	:	7.0.044 (Gargrove)
Ideal geometry (proteins)	:	Engh & Huber (2001)
Ideal geometry (DNA, RNA)	:	Parkinson et al. (1996)
Validation Pipeline (wwPDB-VP)	:	2.37.1

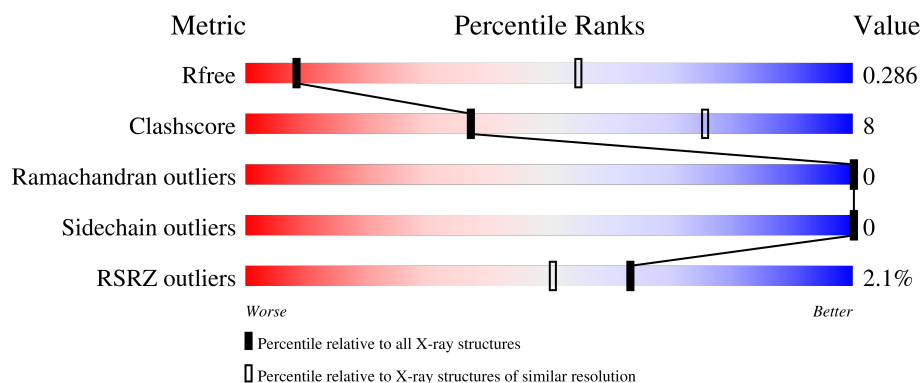
# 1 Overall quality at a glance

The following experimental techniques were used to determine the structure:

## *X-RAY DIFFRACTION*

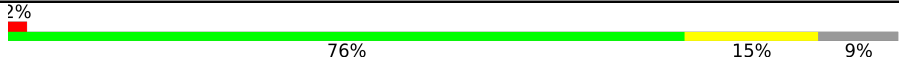

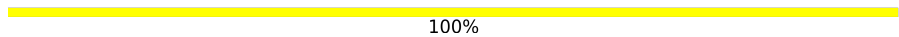
The reported resolution of this entry is 3.67 Å.

Percentile scores (ranging between 0-100) for global validation metrics of the entry are shown in the following graphic. The table shows the number of entries on which the scores are based.



Metric	Whole archive (#Entries)	Similar resolution (#Entries, resolution range(Å))
$R_{free}$	130704	1013 (3.84-3.52)
Clashscore	141614	1070 (3.84-3.52)
Ramachandran outliers	138981	1036 (3.84-3.52)
Sidechain outliers	138945	1033 (3.84-3.52)
RSRZ outliers	127900	1471 (3.86-3.50)

The table below summarises the geometric issues observed across the polymeric chains and their fit to the electron density. The red, orange, yellow and green segments of the lower bar indicate the fraction of residues that contain outliers for  $\geq 3$ , 2, 1 and 0 types of geometric quality criteria respectively. A grey segment represents the fraction of residues that are not modelled. The numeric value for each fraction is indicated below the corresponding segment, with a dot representing fractions  $\leq 5\%$ . The upper red bar (where present) indicates the fraction of residues that have poor fit to the electron density. The numeric value is given above the bar.

Mol	Chain	Length	Quality of chain
1	A	469	
2	B	186	
3	C	2	

The following table lists non-polymeric compounds, carbohydrate monomers and non-standard residues in protein, DNA, RNA chains that are outliers for geometric or electron-density-fit criteria:

Mol	Type	Chain	Res	Chirality	Geometry	Clashes	Electron density
4	NAG	B	201	-	-	-	X

## 2 Entry composition [i](#)

There are 4 unique types of molecules in this entry. The entry contains 4955 atoms, of which 0 are hydrogens and 0 are deuteriums.

In the tables below, the ZeroOcc column contains the number of atoms modelled with zero occupancy, the AltConf column contains the number of residues with at least one atom in alternate conformation and the Trace column contains the number of residues modelled with at most 2 atoms.

- Molecule 1 is a protein called Erythrocyte membrane protein 1.

Mol	Chain	Residues	Atoms					ZeroOcc	AltConf	Trace
1	A	428	Total	C	N	O	S	0	0	0
			3463	2142	626	667	28			

- Molecule 2 is a protein called Inter cellular adhesion molecule 1.

Mol	Chain	Residues	Atoms					ZeroOcc	AltConf	Trace
2	B	186	Total	C	N	O	S	0	0	0
			1436	900	252	277	7			

There is a discrepancy between the modelled and reference sequences:

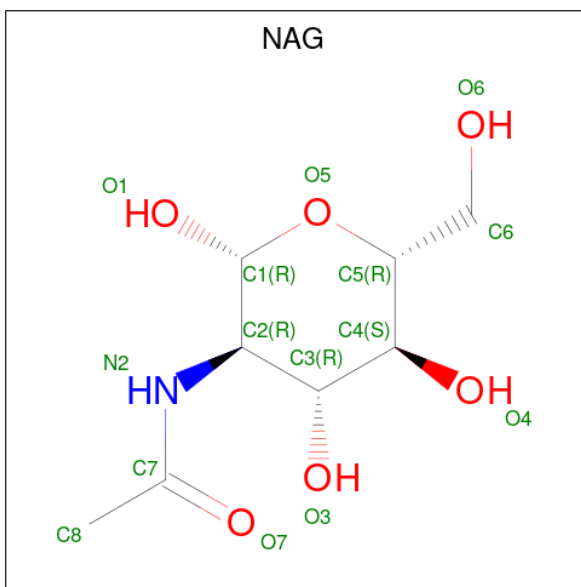
Chain	Residue	Modelled	Actual	Comment	Reference
B	186	GLY	-	expression tag	UNP P05362

- Molecule 3 is an oligosaccharide called 2-acetamido-2-deoxy-beta-D-glucopyranose-(1-4)-2-acetamido-2-deoxy-beta-D-glucopyranose.



Mol	Chain	Residues	Atoms				ZeroOcc	AltConf	Trace
3	C	2	Total	C	N	O	0	0	0
			28	16	2	10			

- Molecule 4 is 2-acetamido-2-deoxy-beta-D-glucopyranose (three-letter code: NAG) (formula: C<sub>8</sub>H<sub>15</sub>NO<sub>6</sub>).



Mol	Chain	Residues	Atoms				ZeroOcc	AltConf
4	B	1	Total	C	N	O	0	0
			14	8	1	5		
4	B	1	Total	C	N	O	0	0
			14	8	1	5		



- Molecule 1: Erythrocyte membrane protein 1



## 4 Data and refinement statistics

Property	Value	Source
Space group	P 65 2 2	Depositor
Cell constants a, b, c, $\alpha$ , $\beta$ , $\gamma$	142.41 Å   142.41 Å   224.22 Å 90.00°   90.00°   120.00°	Depositor
Resolution (Å)	71.20 – 3.67 71.21 – 3.67	Depositor EDS
% Data completeness (in resolution range)	99.5 (71.20-3.67) 99.5 (71.21-3.67)	Depositor EDS
$R_{merge}$	(Not available)	Depositor
$R_{sym}$	(Not available)	Depositor
$\langle I/\sigma(I) \rangle$ <sup>1</sup>	1.40 (at 3.67 Å)	Xtriage
Refinement program	PHENIX 1.13_2998	Depositor
R, $R_{free}$	0.240 , 0.286 0.240 , 0.286	Depositor DCC
$R_{free}$ test set	786 reflections (5.15%)	wwPDB-VP
Wilson B-factor (Å <sup>2</sup> )	124.8	Xtriage
Anisotropy	0.577	Xtriage
Bulk solvent $k_{sol}$ (e/Å <sup>3</sup> ), $B_{sol}$ (Å <sup>2</sup> )	0.28 , 98.4	EDS
L-test for twinning <sup>2</sup>	$\langle  L  \rangle = 0.44$ , $\langle L^2 \rangle = 0.27$	Xtriage
Estimated twinning fraction	No twinning to report.	Xtriage
$F_o, F_c$ correlation	0.91	EDS
Total number of atoms	4955	wwPDB-VP
Average B, all atoms (Å <sup>2</sup> )	160.0	wwPDB-VP

Xtriage's analysis on translational NCS is as follows: *The largest off-origin peak in the Patterson function is 3.39% of the height of the origin peak. No significant pseudotranslation is detected.*

<sup>1</sup>Intensities estimated from amplitudes.

<sup>2</sup>Theoretical values of  $\langle |L| \rangle$ ,  $\langle L^2 \rangle$  for acentric reflections are 0.5, 0.333 respectively for untwinned datasets, and 0.375, 0.2 for perfectly twinned datasets.

## 5 Model quality

### 5.1 Standard geometry

Bond lengths and bond angles in the following residue types are not validated in this section: NAG

The Z score for a bond length (or angle) is the number of standard deviations the observed value is removed from the expected value. A bond length (or angle) with  $|Z| > 5$  is considered an outlier worth inspection. RMSZ is the root-mean-square of all Z scores of the bond lengths (or angles).

Mol	Chain	Bond lengths		Bond angles	
		RMSZ	$\# Z  > 5$	RMSZ	$\# Z  > 5$
1	A	0.27	0/3529	0.42	0/4735
2	B	0.26	0/1466	0.49	0/1998
All	All	0.27	0/4995	0.44	0/6733

There are no bond length outliers.

There are no bond angle outliers.

There are no chirality outliers.

There are no planarity outliers.

### 5.2 Too-close contacts

In the following table, the Non-H and H(model) columns list the number of non-hydrogen atoms and hydrogen atoms in the chain respectively. The H(added) column lists the number of hydrogen atoms added and optimized by MolProbity. The Clashes column lists the number of clashes within the asymmetric unit, whereas Symm-Clashes lists symmetry-related clashes.

Mol	Chain	Non-H	H(model)	H(added)	Clashes	Symm-Clashes
1	A	3463	0	3327	45	0
2	B	1436	0	1441	32	0
3	C	28	0	25	2	0
4	B	28	0	26	3	0
All	All	4955	0	4819	76	0

The all-atom clashscore is defined as the number of clashes found per 1000 atoms (including hydrogen atoms). The all-atom clashscore for this structure is 8.

All (76) close contacts within the same asymmetric unit are listed below, sorted by their clash magnitude.



Atom-1	Atom-2	Interatomic distance (Å)	Clash overlap (Å)
2:B:85:THR:HG21	3:C:1:NAG:H5	1.67	0.76
2:B:168:GLN:HE21	4:B:201:NAG:H83	1.51	0.75
1:A:1100:LEU:HD13	1:A:1123:MET:HG2	1.68	0.75
2:B:110:VAL:HB	2:B:140:ALA:HB3	1.70	0.74
1:A:1106:ILE:HD11	2:B:18:LEU:HB2	1.71	0.72
1:A:785:LYS:HG2	1:A:786:PRO:HD2	1.72	0.70
2:B:110:VAL:HG21	2:B:121:VAL:HG11	1.73	0.69
1:A:923:ASP:OD2	1:A:1028:ARG:NH2	2.26	0.69
2:B:10:ILE:HG12	2:B:81:THR:HB	1.77	0.67
2:B:25:CYS:SG	2:B:70:PRO:HD2	2.36	0.66
1:A:1101:TYR:O	1:A:1131:GLN:NE2	2.31	0.64
1:A:773:ALA:HB2	1:A:870:ILE:HG22	1.80	0.64
1:A:781:LYS:NZ	1:A:800:SER:O	2.30	0.63
2:B:33:ILE:O	2:B:39:LYS:NZ	2.32	0.63
1:A:870:ILE:HG23	1:A:984:TRP:HE1	1.63	0.62
1:A:889:ILE:HD11	1:A:1000:LEU:HD23	1.82	0.61
1:A:846:ARG:HH21	1:A:916:TYR:HB3	1.67	0.58
1:A:920:ASP:OD1	1:A:1028:ARG:NH1	2.36	0.58
2:B:168:GLN:NE2	4:B:201:NAG:H83	2.19	0.58
1:A:1056:MET:HB2	1:A:1197:ALA:HB2	1.87	0.56
2:B:35:THR:HB	2:B:63:PRO:HB3	1.89	0.55
1:A:1064:LYS:HA	1:A:1200:CYS:SG	2.48	0.54
2:B:116:ARG:HD3	2:B:119:LEU:HD23	1.89	0.54
2:B:121:VAL:HG12	2:B:161:THR:HG22	1.90	0.53
2:B:164:ASP:OD2	2:B:166:ARG:NH1	2.41	0.53
2:B:31:LEU:HD13	2:B:67:SER:HB3	1.91	0.53
1:A:898:LEU:HD23	1:A:902:ILE:HG23	1.91	0.53
1:A:904:GLN:OE1	1:A:1005:LYS:NZ	2.42	0.52
1:A:1044:GLU:OE2	1:A:1082:LYS:NZ	2.41	0.52
2:B:92:ALA:HB2	2:B:107:ARG:HB2	1.91	0.52
1:A:998:CYS:O	1:A:1001:LYS:NZ	2.35	0.51
1:A:821:ARG:HE	1:A:846:ARG:HA	1.77	0.50
2:B:99:PRO:HG2	2:B:102:LYS:HG3	1.94	0.49
1:A:846:ARG:NH2	1:A:916:TYR:HB3	2.27	0.49
2:B:29:LYS:HB2	2:B:68:ASN:HB3	1.93	0.48
1:A:1042:SER:OG	1:A:1161:GLU:O	2.32	0.47
1:A:833:LYS:HG2	1:A:834:VAL:H	1.79	0.47
1:A:792:ILE:HD11	1:A:994:ARG:HH21	1.78	0.47
4:B:202:NAG:H3	4:B:202:NAG:H83	1.96	0.46
1:A:1033:TRP:CH2	1:A:1090:TRP:HB2	2.51	0.46
1:A:955:LYS:HG3	1:A:965:ASP:HB3	1.97	0.46
1:A:1162:CYS:HB3	1:A:1165:GLN:O	2.16	0.46

Continued on next page...

*Continued from previous page...*

Atom-1	Atom-2	Interatomic distance (Å)	Clash overlap (Å)
1:A:1069:CYS:O	1:A:1073:GLU:N	2.49	0.45
1:A:1136:ASP:OD1	1:A:1141:ASP:HB2	2.16	0.45
1:A:834:VAL:O	1:A:836:THR:N	2.45	0.45
1:A:843:ILE:HD13	1:A:848:GLN:HB2	1.99	0.45
2:B:120:THR:HA	2:B:134:PRO:HA	1.99	0.45
2:B:37:LEU:HD13	2:B:57:VAL:HG22	1.99	0.44
2:B:8:LYS:HB3	2:B:8:LYS:HE2	1.76	0.44
2:B:95:PRO:HG2	2:B:98:GLN:NE2	2.33	0.44
1:A:984:TRP:O	1:A:988:ASN:ND2	2.51	0.44
2:B:98:GLN:O	2:B:184:THR:HA	2.18	0.44
1:A:1062:CYS:HB2	1:A:1068:ASN:HB2	1.98	0.43
2:B:100:VAL:HG22	2:B:184:THR:HG22	2.00	0.43
2:B:173:PHE:HB3	3:C:1:NAG:O6	2.19	0.43
1:A:1199:LYS:HE2	1:A:1199:LYS:HB3	1.84	0.43
2:B:122:VAL:HG22	2:B:132:ARG:HG3	2.01	0.43
1:A:781:LYS:HD3	1:A:862:TRP:CZ3	2.54	0.42
1:A:809:GLY:O	1:A:813:THR:OG1	2.38	0.42
1:A:792:ILE:HD12	1:A:792:ILE:H	1.85	0.42
1:A:833:LYS:HG2	1:A:834:VAL:N	2.34	0.42
2:B:63:PRO:HD2	2:B:78:THR:HG23	2.01	0.42
2:B:64:MET:HA	2:B:77:LYS:HA	2.02	0.42
2:B:88:ARG:HB2	2:B:111:GLU:HB3	2.01	0.42
1:A:1021:ASP:OD1	1:A:1021:ASP:N	2.52	0.42
1:A:816:ASP:HB2	1:A:849:HIS:HB3	2.01	0.41
1:A:828:TRP:CE2	1:A:845:PRO:HD3	2.55	0.41
1:A:973:ASN:ND2	2:B:166:ARG:O	2.53	0.41
1:A:1113:PHE:HB2	1:A:1120:TYR:HB2	2.02	0.41
2:B:119:LEU:HD13	2:B:163:LEU:HB2	2.03	0.41
2:B:124:LEU:HD23	2:B:129:GLU:HA	2.01	0.41
1:A:1113:PHE:HD2	1:A:1120:TYR:HB3	1.86	0.41
1:A:900:ASP:HB2	1:A:901:PRO:HD3	2.03	0.41
1:A:920:ASP:O	1:A:924:ILE:HG13	2.21	0.41
2:B:161:THR:OG1	2:B:175:ASN:HB2	2.20	0.41
1:A:801:ASN:ND2	1:A:863:VAL:HG22	2.37	0.40

There are no symmetry-related clashes.

## 5.3 Torsion angles

### 5.3.1 Protein backbone

In the following table, the Percentiles column shows the percent Ramachandran outliers of the chain as a percentile score with respect to all X-ray entries followed by that with respect to entries of similar resolution.

The Analysed column shows the number of residues for which the backbone conformation was analysed, and the total number of residues.

Mol	Chain	Analysed	Favoured	Allowed	Outliers	Percentiles	
1	A	418/469 (89%)	394 (94%)	24 (6%)	0	100	100
2	B	184/186 (99%)	178 (97%)	6 (3%)	0	100	100
All	All	602/655 (92%)	572 (95%)	30 (5%)	0	100	100

There are no Ramachandran outliers to report.

### 5.3.2 Protein sidechains

In the following table, the Percentiles column shows the percent sidechain outliers of the chain as a percentile score with respect to all X-ray entries followed by that with respect to entries of similar resolution.

The Analysed column shows the number of residues for which the sidechain conformation was analysed, and the total number of residues.

Mol	Chain	Analysed	Rotameric	Outliers	Percentiles	
1	A	373/404 (92%)	373 (100%)	0	100	100
2	B	165/165 (100%)	165 (100%)	0	100	100
All	All	538/569 (95%)	538 (100%)	0	100	100

There are no protein residues with a non-rotameric sidechain to report.

Sometimes sidechains can be flipped to improve hydrogen bonding and reduce clashes. All (2) such sidechains are listed below:

Mol	Chain	Res	Type
1	A	973	ASN
1	A	990	HIS

### 5.3.3 RNA ⓘ

There are no RNA molecules in this entry.

## 5.4 Non-standard residues in protein, DNA, RNA chains ⓘ

There are no non-standard protein/DNA/RNA residues in this entry.

## 5.5 Carbohydrates ⓘ

2 monosaccharides are modelled in this entry.

In the following table, the Counts columns list the number of bonds (or angles) for which Mogul statistics could be retrieved, the number of bonds (or angles) that are observed in the model and the number of bonds (or angles) that are defined in the Chemical Component Dictionary. The Link column lists molecule types, if any, to which the group is linked. The Z score for a bond length (or angle) is the number of standard deviations the observed value is removed from the expected value. A bond length (or angle) with  $|Z| > 2$  is considered an outlier worth inspection. RMSZ is the root-mean-square of all Z scores of the bond lengths (or angles).

Mol	Type	Chain	Res	Link	Bond lengths			Bond angles		
					Counts	RMSZ	# Z  > 2	Counts	RMSZ	# Z  > 2
3	NAG	C	1	2,3	14,14,15	0.27	0	17,19,21	0.73	0
3	NAG	C	2	3	14,14,15	0.29	0	17,19,21	1.16	2 (11%)

In the following table, the Chirals column lists the number of chiral outliers, the number of chiral centers analysed, the number of these observed in the model and the number defined in the Chemical Component Dictionary. Similar counts are reported in the Torsion and Rings columns. '-' means no outliers of that kind were identified.

Mol	Type	Chain	Res	Link	Chirals	Torsions	Rings
3	NAG	C	1	2,3	-	0/6/23/26	0/1/1/1
3	NAG	C	2	3	-	2/6/23/26	0/1/1/1

There are no bond length outliers.

All (2) bond angle outliers are listed below:

Mol	Chain	Res	Type	Atoms	Z	Observed(°)	Ideal(°)
3	C	2	NAG	C2-N2-C7	2.40	126.31	122.90
3	C	2	NAG	C1-O5-C5	-2.35	109.00	112.19

There are no chirality outliers.

All (2) torsion outliers are listed below:

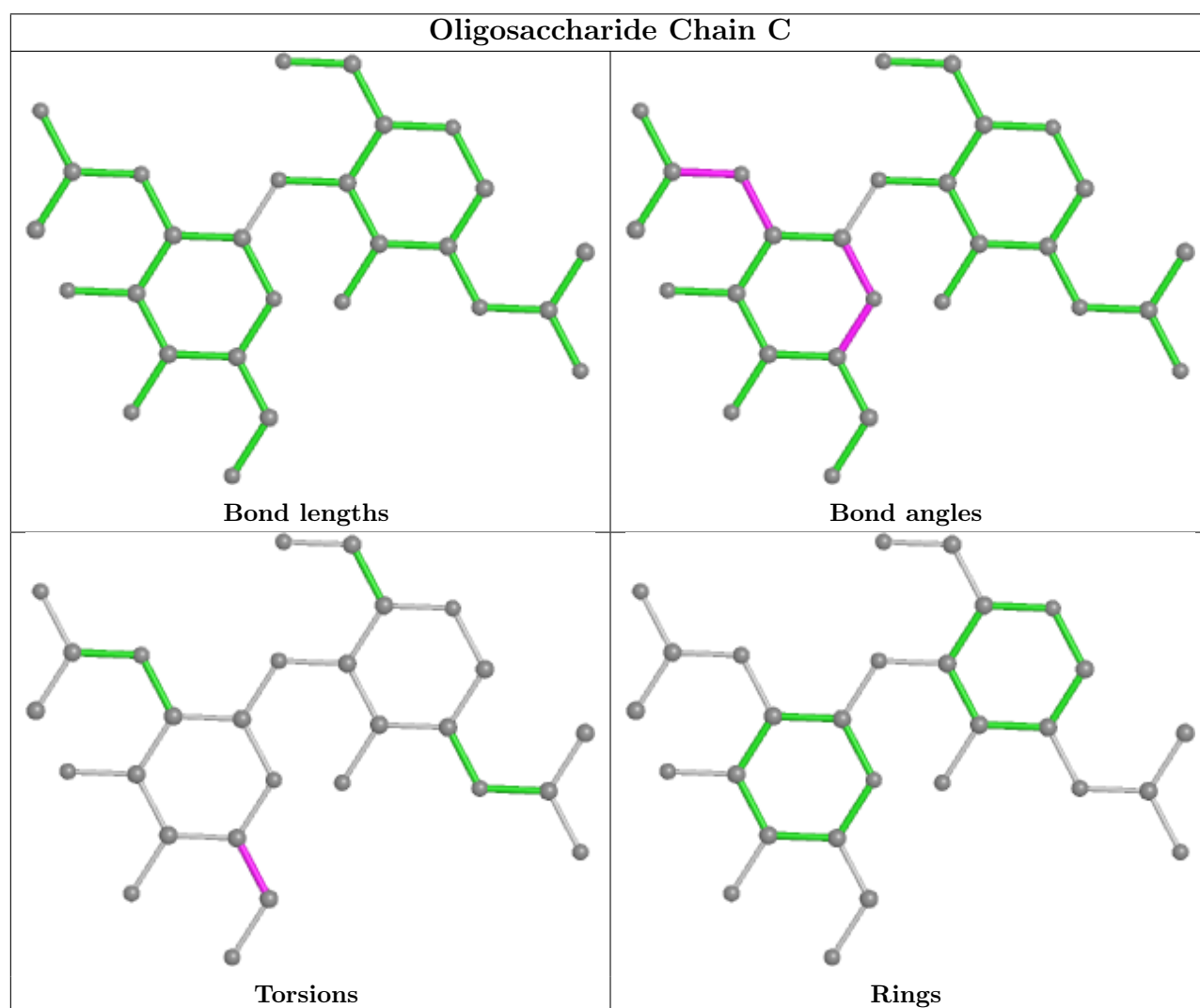
Mol	Chain	Res	Type	Atoms
3	C	2	NAG	C4-C5-C6-O6
3	C	2	NAG	O5-C5-C6-O6

There are no ring outliers.

1 monomer is involved in 2 short contacts:

Mol	Chain	Res	Type	Clashes	Symm-Clashes
3	C	1	NAG	2	0

The following is a two-dimensional graphical depiction of Mogul quality analysis of bond lengths, bond angles, torsion angles, and ring geometry for oligosaccharide.



## 5.6 Ligand geometry

2 ligands are modelled in this entry.

In the following table, the Counts columns list the number of bonds (or angles) for which Mogul statistics could be retrieved, the number of bonds (or angles) that are observed in the model and the number of bonds (or angles) that are defined in the Chemical Component Dictionary. The Link column lists molecule types, if any, to which the group is linked. The Z score for a bond length (or angle) is the number of standard deviations the observed value is removed from the expected value. A bond length (or angle) with  $|Z| > 2$  is considered an outlier worth inspection. RMSZ is the root-mean-square of all Z scores of the bond lengths (or angles).

Mol	Type	Chain	Res	Link	Bond lengths			Bond angles		
					Counts	RMSZ	# Z  > 2	Counts	RMSZ	# Z  > 2
4	NAG	B	201	2	14,14,15	0.49	0	17,19,21	0.56	0
4	NAG	B	202	2	14,14,15	0.58	0	17,19,21	1.72	3 (17%)

In the following table, the Chirals column lists the number of chiral outliers, the number of chiral centers analysed, the number of these observed in the model and the number defined in the Chemical Component Dictionary. Similar counts are reported in the Torsion and Rings columns. '-' means no outliers of that kind were identified.

Mol	Type	Chain	Res	Link	Chirals	Torsions	Rings
4	NAG	B	201	2	-	4/6/23/26	0/1/1/1
4	NAG	B	202	2	-	5/6/23/26	0/1/1/1

There are no bond length outliers.

All (3) bond angle outliers are listed below:

Mol	Chain	Res	Type	Atoms	Z	Observed(°)	Ideal(°)
4	B	202	NAG	C2-N2-C7	5.07	130.13	122.90
4	B	202	NAG	C1-C2-N2	3.20	115.95	110.49
4	B	202	NAG	C1-O5-C5	2.08	115.00	112.19

There are no chirality outliers.

All (9) torsion outliers are listed below:

Mol	Chain	Res	Type	Atoms
4	B	202	NAG	O5-C5-C6-O6
4	B	201	NAG	C4-C5-C6-O6
4	B	201	NAG	C8-C7-N2-C2
4	B	201	NAG	O7-C7-N2-C2
4	B	202	NAG	C8-C7-N2-C2

*Continued on next page...*

*Continued from previous page...*

Mol	Chain	Res	Type	Atoms
4	B	202	NAG	O7-C7-N2-C2
4	B	201	NAG	O5-C5-C6-O6
4	B	202	NAG	C4-C5-C6-O6
4	B	202	NAG	C3-C2-N2-C7

There are no ring outliers.

2 monomers are involved in 3 short contacts:

Mol	Chain	Res	Type	Clashes	Symm-Clashes
4	B	201	NAG	2	0
4	B	202	NAG	1	0

## 5.7 Other polymers [i](#)

There are no such residues in this entry.

## 5.8 Polymer linkage issues [i](#)

There are no chain breaks in this entry.

## 6 Fit of model and data [i](#)

### 6.1 Protein, DNA and RNA chains [i](#)

In the following table, the column labelled ‘#RSRZ > 2’ contains the number (and percentage) of RSRZ outliers, followed by percent RSRZ outliers for the chain as percentile scores relative to all X-ray entries and entries of similar resolution. The OWAB column contains the minimum, median, 95<sup>th</sup> percentile and maximum values of the occupancy-weighted average B-factor per residue. The column labelled ‘Q < 0.9’ lists the number of (and percentage) of residues with an average occupancy less than 0.9.

Mol	Chain	Analysed	<RSRZ>	#RSRZ>2	OWAB(Å <sup>2</sup> )	Q<0.9
1	A	428/469 (91%)	0.06	10 (2%) 60 47	91, 139, 220, 269	0
2	B	186/186 (100%)	0.10	3 (1%) 72 60	142, 192, 246, 264	0
All	All	614/655 (93%)	0.07	13 (2%) 63 50	91, 156, 232, 269	0

All (13) RSRZ outliers are listed below:

Mol	Chain	Res	Type	RSRZ
1	A	832	GLU	5.7
1	A	835	GLU	3.8
1	A	1164	GLU	3.4
1	A	1169	CYS	3.2
1	A	1168	PHE	3.2
1	A	840	ASP	2.8
2	B	135	ALA	2.5
1	A	837	THR	2.4
1	A	1116	GLY	2.3
2	B	78	THR	2.3
1	A	1158	HIS	2.1
2	B	130	LEU	2.1
1	A	742	THR	2.0

### 6.2 Non-standard residues in protein, DNA, RNA chains [i](#)

There are no non-standard protein/DNA/RNA residues in this entry.

### 6.3 Carbohydrates [i](#)

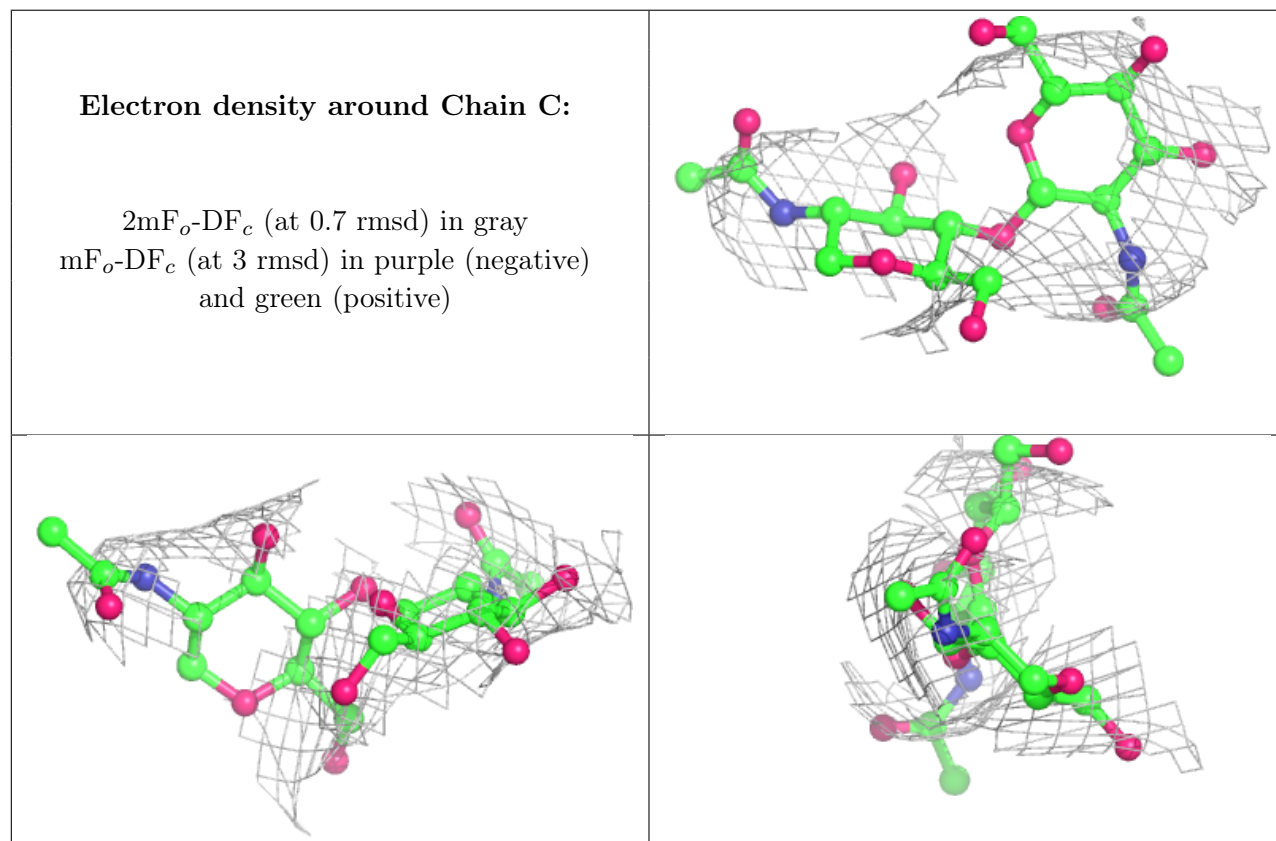
In the following table, the Atoms column lists the number of modelled atoms in the group and the number defined in the chemical component dictionary. The B-factors column lists the minimum,



median, 95<sup>th</sup> percentile and maximum values of B factors of atoms in the group. The column labelled 'Q< 0.9' lists the number of atoms with occupancy less than 0.9.

Mol	Type	Chain	Res	Atoms	RSCC	RSR	B-factors(Å <sup>2</sup> )	Q<0.9
3	NAG	C	1	14/15	0.76	0.22	182,199,217,228	0
3	NAG	C	2	14/15	0.82	0.29	206,213,229,231	0

The following is a graphical depiction of the model fit to experimental electron density for oligosaccharide. Each fit is shown from different orientation to approximate a three-dimensional view.



## 6.4 Ligands ⓘ

In the following table, the Atoms column lists the number of modelled atoms in the group and the number defined in the chemical component dictionary. The B-factors column lists the minimum, median, 95<sup>th</sup> percentile and maximum values of B factors of atoms in the group. The column labelled 'Q< 0.9' lists the number of atoms with occupancy less than 0.9.

Mol	Type	Chain	Res	Atoms	RSCC	RSR	B-factors(Å <sup>2</sup> )	Q<0.9
4	NAG	B	201	14/15	0.77	0.52	202,218,225,230	0
4	NAG	B	202	14/15	0.81	0.26	222,223,226,226	0

## 6.5 Other polymers [i](#)

There are no such residues in this entry.